

Burial lot #8038 was located in Area L with the coordinates in the NW corner of the coffin S22'5" E72'2". The elevation at the base of the coffin in the NW corner was 727.07 famsl. The 6 sided adult coffin (74" x 20") contained the remains of 1 individual. The primary individual was face up with the head to the west facing east. There were no grave goods recovered for burial lot #8038.

Burial lot #8039 was located in Area L with the coordinates in the NW corner of the coffin S26'4" E72'6". The elevation at the base of the coffin in the NW corner was 726.83 famsl. The shape of the adult coffin (78" x 21") was indeterminate due to ground water disturbance. It contained the remains of 1 individual. The primary individual was face up with the head to the west facing east. The following grave good for burial lot #8039 was recovered: wire.

Burial lot #8040 was located in Area L with the coordinates in the NW corner of the coffin S1'3" E68'11". The elevation at the base of the coffin in the NW corner was 728.28 famsl. The 6 sided adult coffin (72" x 18") contained the remains of 1 individual. The primary individual was face up with the head to the west facing east. The following grave good for burial lot #8040 was recovered: wire mesh.

Burial lot #8041 was located in Area L with the coordinates in the NW corner of the coffin N3'3" E68'3". The elevation at the base of the coffin in the NW corner was 728.59 famsl. The shape of the adult coffin (72" x 13") was indeterminate due to coffin wood decay. It contained the remains of 1 individual. The primary individual was face up with the head to the west facing east. The following grave goods for burial lot #8041 were recovered: buttons and fragments of clear glass.

Burial lot #8042 was located in Area L with the coordinates in the NW corner of the burial pit stain N7'0" E69'8". The elevation of the pit in the NW corner was 729.023 famsl. The presence of a burial pit stain indicates that a coffin was there at one time, but upon excavation of the stain, no skeletal elements or coffin hardware was recovered.

Burial lot #8043 was located in Area L with the coordinates in the NW corner of the coffin N12'0" E69'0". The elevation at the base of the coffin in the NW corner was 728.37 famsl. The 6 sided adult coffin (70" x 20") contained the remains of 1 individual. The primary individual was face up with the head to the west facing east. The following grave goods for burial lot #8043 were recovered: buttons and/or cuff links and cloth.

Burial lot #8044 was located in Area L with the coordinates in the NW corner of the coffin N16'3" E69'5". The elevation at the base of the coffin in the NW corner was 728.48 famsl. The shape and width of the adult coffin (length 72") was indeterminate due to coffin wood decay. It contained the remains of 1 individual. The primary individual was face up with the head to the west facing east. There were no grave goods recovered for burial lot #8044.

Burial lot #8045 was located in Area L with the coordinates in the NW corner of the coffin N19'10" E69'3". The elevation at the base of the coffin in the NW corner was 728.35 famsl. The 6 sided adult coffin (74" x 17.5") contained the remains of 1 individual. The primary individual was face up with the head to the west facing east. There were no grave goods recovered for burial lot #8045.

Burial lot #8046 was located in Area L with the coordinates in the NW corner of the coffin N19'3" E77'9". The elevation at the base of the coffin in the NW corner was 728.11 famsl. The 6 sided adult coffin (74" x 15") contained the remains of 1 individual. The primary individual was face up with the head to the west facing east. There were no grave goods recovered for burial lot #8046.

Burial lot #8047 was located in Area L with the coordinates in the NW corner of the coffin N15'3" E77'5". The elevation at the base of the coffin in the NW corner was 728.06 famsl. The shape of the adult coffin (77" x 20") was indeterminate due to coffin wood decay. It contained the remains of 1 individual. The primary individual was face up with the head to the west facing east. There were no grave goods recovered for burial lot #8047.

Burial lot #8048 was located in Area L with the coordinates in the NW corner of the coffin N11'4" E76'10". The elevation at the base of the coffin in the NW corner was 727.68 famsl. The 6 sided adult coffin (74" x 20") contained the remains of 1 individual. The primary individual was face up with the head to the west facing east. There were no grave goods recovered for burial lot #8048.

Burial lot #8049 was located in Area L with the coordinates in the NW corner of the coffin N7'4" E76'6". The elevation at the base of the coffin in the NW corner was 727.43 famsl. The 6 sided adult coffin (73" x 23") contained the remains of 1 individual. The primary individual was face up with the head to the west facing east. The following grave goods for burial lot #8049 were recovered: buttons.

Burial lot #8050 was located in Area L with the coordinates in the NW corner of the coffin N3'0" E77'0". The elevation at the base of the coffin in the NW corner was 727.89 famsl. The 6 sided adult coffin (78" x 13") contained the remains of 1 individual. The primary individual was face up with the head to the west facing east. The following grave goods for burial lot #8050 were recovered: metal and glass fragments.

Burial lot #8051 was located in Area L with the coordinates in the NW corner of the coffin S1'3" E77'9". The elevation at the base of the coffin in the NW corner was 727.69 famsl. The shape and length of the possible adult coffin (width 11") was indeterminate due to disturbance of the soil. It contained the partial remains of 1 individual. The primary individual's position was indeterminate due to the disturbance and few skeletal remains. There were no grave goods recovered for burial lot #8051.

Burial lot #8052 was located in Area L with the coordinates in the NW corner of the coffin S12'8" E77'10". The elevation at the base of the coffin in the NW corner was 726.73 famsl. The coffin (19" x 18") was disturbed by a trench and upon excavation ground water seeped in and no skeletal elements were present. There were no grave goods recovered for burial lot #8052.

Burial lot #8053 was located in Area L with the coordinates in the NW corner of the coffin S51'9" E79'3". The elevation at the base of the coffin in the NW corner was 725.15 famsl. The 6 sided adult coffin (74" x 20") contained the remains of 1 individual. The primary individual was face up with the head to the west facing east. The following grave good for burial lot #8053 was recovered: copper crucifix.

Burial lot #8054 was located in Area L with the coordinates in the NW corner of the coffin S47'5" E79'10". The elevation at the base of the coffin in the NW corner was 725.16 famsl. The 6 sided adult coffin (74" x 19") contained the remains of 1 individual. The primary individual was face up with the head to the west facing east. There were no grave goods recovered for burial lot #8054.

Burial lot #8055 was located in Area L with the coordinates in the NW corner of the coffin S43'4" E80'9". The elevation at the base of the coffin in the NW corner was 725.29 famsl. The 6 sided adult coffin (66" x 20") contained the remains of 1 individual. The primary individual was face up with the head to the west facing east. There were no grave goods recovered for burial lot #8055.

Burial lot #8056 was located in Area L with the coordinates in the NW corner of the coffin S39'2" E79'4". The elevation at the base of the coffin in the NW corner was 725.60 famsl. The 6 sided adult coffin (73" x 17") contained the remains of 1 individual. The primary individual was face up with the head to the west facing east. There were no grave goods recovered for burial lot #8056.

Burial lot #8057 was located in Area L with the coordinates in the NW corner of the coffin S34'0" E78'8". The elevation at the base of the coffin in the NW corner was 725.85 famsl. The 6 sided adult coffin (72" x 18") contained the remains of 1 individual. The primary individual was face up with the head to the west facing east. There were no grave goods recovered for burial lot #8057.

Burial lot #8058 was located in Area L with the coordinates in the NW corner of the coffin S30'8" E81'3". The elevation at the base of the coffin in the NW corner was 725.83 famsl. The 6 sided adult coffin (74" x 20") contained the remains of 1 individual. The primary individual was face up with the head to the west facing east. The following grave goods for burial lot #8058 were recovered: cloth, glass fragments, and a crucifix.

Burial lot #8059 was located in Area L with the coordinates in the NW corner of the coffin S27'0" E81'4". The elevation at the base of the coffin in the NW corner was 726.13 famsl. The 6 sided adult coffin (75" x 19") contained the remains of 1 individual. The primary individual was face up with the head to the west facing east. The following grave goods for burial lot #8059 were recovered: buttons.

Burial lot #8060 was located in Area L with the coordinates in the NW corner of the coffin S22'3" E80'10". The elevation at the base of the coffin in the NW corner was 726.32 famsl. The 6 sided adult coffin (76" x 17") contained the remains of 1 individual. The primary individual was face up with the head to the west facing east. There were no grave goods recovered for burial lot #8060.

Burial lot #8061 was located in Area L with the coordinates in the NW corner of the coffin S17'8" E81'3". The elevation at the base of the coffin in the NW corner was 726.79 famsl. The 6 sided adult coffin (77" x 21") contained the remains of 1 individual. The primary individual was face up with the head to the west facing east. The following grave goods for burial lot #8061 were recovered: safety pins.

Burial lot #8062 was located in Area L with the coordinates in the NW corner of the coffin S13'1" E83'8". The elevation at the base of the coffin in the NW corner was 726.63 famsl. The 6 sided adult coffin (79" x 19") contained the remains of 1 individual. The primary individual was face up with the head to the west facing east. The following grave goods for burial lot #8062 were recovered: cloth and safety pins.

Burial lot #8063 was located in Area L with the coordinates in the NW corner of the coffin S1'9" E84'10". The elevation at the base of the coffin in the NW corner was 727.35 famsl. The shape of the adult coffin (70" x 12") was indeterminate due to disturbances. It contained the remains of 1 individual. The primary individual was face up with the head to the west facing east. There were no grave goods recovered for burial lot #8063.

Burial lot #8064 was located in Area L with the coordinates in the NW corner of the coffin N2'10" E84'6". The elevation at the base of the coffin in the NW corner was 726.89 famsl. The 6 sided adult coffin (82" x 25") contained the remains of 1 individual. The primary individual was face up with the head to the west facing east. There were no grave goods recovered for burial lot #8064.

Burial lot #8065 was located in Area L with the coordinates in the NW corner of the coffin N6'6" E84'10". The elevation at the base of the coffin in the NW corner was 726.93 famsl. The 6 sided adult coffin (74" x 22") contained the remains of 1 individual. The primary individual was face up with the head to the west facing east. There were no grave goods recovered for burial lot #8065.

Burial lot #8066 was located in Area L with the coordinates in the NW corner of the coffin N11'0" E86'1". The elevation at the base of the coffin in the NW corner was 727.30 famsl. The 6 sided adult coffin (29" x 15") had been disturbed and contained the partial remains of 1 individual. The primary individual was face up with the head to the west facing east. There were no grave goods recovered for burial lot #8066.

Burial lot #8067 was located in Area L with the coordinates in the NW corner of the coffin N18'3" E86'3". The elevation at the base of the coffin in the NW corner was 727.81 famsl. The 6 sided adult coffin (77" x 20") contained the remains of 1 individual. The primary individual was face up with the head to the west facing east. The following grave goods for burial lot #8067 were recovered: buttons.

Burial lot #8068 was located in Area L with the coordinates in the NW corner of the coffin N22'0" E95'3". The elevation at the base of the coffin in the NW corner was 727.30 famsl. The 6 sided adult coffin (72" x 20") contained the remains of 1 individual. The primary individual was face up with the head to the west facing east. The following grave goods for burial lot #8068 were recovered: buttons.

Burial lot #8069 was located in Area L with the coordinates in the NW corner of the coffin N18'0" E94'9" The elevation at the base of the coffin in the NW corner was 727.12 famsl. The 6 sided adult coffin (72" x 19") contained the remains of 1 individual plus a secondary burial of additional skeletal elements (lot#8185). The primary individual was face up with the head to the west facing east. There were no grave goods recovered for burial lot #8069.

Burial lot #8070 was located in Area L with the coordinates in the NW corner of the coffin N14'3" E94'6". The elevation at the base of the coffin in the NW corner was 727.51 famsl. The 6 sided adult coffin (75" x 18") contained the remains of 1 individual. The primary individual was face up with the head to the west facing east. There were no grave goods recovered for burial lot #8070.

Burial lot #8071 was located in Area L with the coordinates in the NW corner of the coffin N10'3" E93'3". The elevation at the base of the coffin in the NW corner was 726.67 famsl. The 6 sided adult coffin (75" x 19") contained the remains of 1 individual. The primary individual was face up with the head to the west facing east. There were no grave goods recovered for burial lot #8071.

Burial lot #8072 was located in Area L with the coordinates in the NW corner of the coffin N6'4" E93'8". The elevation at the base of the coffin in the NW corner was 726.63 famsl. The 6 sided adult coffin (79" x 23") contained the remains of 1 individual. The primary individual was face up with the head to the west facing east. There were no grave goods recovered for burial lot #8072.

Burial lot #8073 was located in Area L with the coordinates in the NW corner of the coffin N2'11" E92'10". The elevation at the base of the coffin in the NW corner was 726.23 famsl. The 6 sided adult coffin (84" x 16") contained the remains of 1 individual. The primary individual was face up with the head to the west facing east. There were no grave goods recovered for burial lot #8073.

Burial lot #8074 was located in Area L with the coordinates in the NW corner of the coffin S1'7" E93'7". The elevation at the base of the coffin in the NW corner was 726.42 famsl. The 6 sided adult coffin (74" x 16") contained the remains of 1 individual. The primary individual was face up with the head to the west facing east. There were no grave goods recovered for burial lot #8074.

Burial lot #8075 was located in Area L with the coordinates in the NW corner of the coffin S13'1" E91'7". The elevation at the base of the coffin in the NW corner was 726.34 famsl. The 6 sided adult coffin (74" x 19") contained the remains of 1 individual. The primary individual was face up with the head to the west facing east. There were no grave goods recovered for burial lot #8075.

Burial lot #8076 was located in Area L with the coordinates in the NW corner of the coffin S18'7" E90'10". The elevation at the base of the coffin in the NW corner was 725.91 famsl. The 6 sided adult coffin (74" x 20.5") contained the remains of 1 individual. The primary individual was face up with the head to the west facing east. There were no grave goods recovered for burial lot #8076.

Burial lot #8077 was located in Area L with the coordinates in the NW corner of the coffin S22'6" E90'3". The elevation at the base of the coffin in the NW corner was 725.88 famsl. The 6 sided adult coffin (72" x 20") contained the remains of 1 individual. The primary individual was face up with the head to the west facing east. There were no grave goods recovered for burial lot #8077.

Burial lot #8078 was located in Area L with the coordinates in the NW corner of the coffin S26'9" E89'9". The elevation at the base of the coffin in the NW corner was 725.84 famsl. The 8 sided adult coffin (76" x 17") contained the remains of 1 individual. The primary individual was face up with the head to the west facing east. The following grave good for burial lot #8078 was recovered: one button.

Burial lot #8079 was located in Area L with the coordinates in the NW corner of the coffin S30'8" E89'9". The elevation at the base of the coffin in the NW corner was 725.44 famsl. The 6 sided adult coffin (79" x 21") contained the remains of 1 individual. The primary individual was face up with the head to the west facing east. There were no grave goods recovered for burial lot #8079.

Burial lot #8080 was located in Area L with the coordinates in the NW corner of the coffin S34'9" E90'7". The elevation at the base of the coffin in the NW corner was 724.94 famsl. The 6 sided adult coffin (73.5" x 19") contained the remains of 1 individual. The primary individual was face up with the head to the west facing east. There were no grave goods recovered for burial lot #8080.

Burial lot #8081 was located in Area L with the coordinates in the NW corner of the coffin S40'6" E89'6". The elevation at the base of the coffin in the NW corner was 725.19 famsl. The 6 sided adult coffin (72" x 20") contained the remains of 1 individual. The primary individual was face up with the head to the west facing east. There were no grave goods recovered for burial lot #8081.

Burial lot #8082 was located in Area L with the coordinates in the NW corner of the coffin S36'2" E89'7". The elevation at the base of the coffin in the NW corner was 724.62 famsl. The 6 sided adult coffin (75" x 20") contained the remains of 1 individual. The primary individual was face up with the head to the west facing east. The following grave goods for burial lot #8082 were recovered: a button and cloth wrapped around pin fragments.

Burial lot #8083 was located in Area L with the coordinates in the NW corner of the coffin S47'10" E88'10". The elevation at the base of the coffin in the NW corner was 724.57 famsl. The 6 sided adult coffin (74" x 18") contained the remains of 1 individual. The primary individual was face up with the head to the west facing east. There were no grave goods recovered for burial lot #8083.

Burial lot #8085 was located in Area L with the coordinates in the NW corner of the coffin S47'0" E97'9". The elevation at the base of the coffin in the NW corner was 724.19 famsl. The 6 sided adult coffin (75" x 20") contained the remains of 1 individual. The primary individual was face up with the head to the west facing east. There were no grave goods recovered for burial lot #8085.

Burial lot #8086 was located in Area L with the coordinates in the NW corner of the coffin S48'9" E97'6". The elevation at the base of the coffin in the NW corner was 724.10 famsl. The 6 sided adult coffin (75" x 17") contained the remains of 1 individual. The primary individual was face up with the head to the west facing east. There were no grave goods recovered for burial lot #8086.

Burial lot #8087 was located in Area L with the coordinates in the NW corner of the coffin S44'6" E97'8". The elevation at the base of the coffin in the NW corner was 724.32 famsl. The 6 sided adult coffin (73" x 20") contained the remains of 1 individual. The primary individual was face up with the head to the west facing east. There were no grave goods recovered for burial lot #8087.

Burial lot #8088 was located in Area L with the coordinates in the NW corner of the coffin S40'7" E98'6". The elevation at the base of the coffin in the NW corner was 724.68 famsl. The 6 sided adult coffin (68" x 14") contained the remains of 1 individual. The primary individual was face up with the head to the west facing east. There were no grave goods recovered for burial lot #8088.

Burial lot #8089 was located in Area L with the coordinates in the NW corner of the coffin S35'9" E98'7". The elevation at the base of the coffin in the NW corner was 724.45 famsl. The shape of the adult coffin (75" x 18") was indeterminate due to coffin wood decay and ground water seepage. The coffin contained the remains of 1 individual. The primary individual was face up with the head to the west facing east. There were no grave goods recovered for burial lot #8089.

Burial lot #8090 was located in Area L with the coordinates in the NW corner of the coffin S30'11" E101'3". The elevation at the base of the coffin in the NW corner was 724.87 famsl. The 6 sided adult coffin (78" x 21") contained the remains of 1 individual. The primary individual was face up with the head to the west facing east. The following grave goods for burial lot #8090 were recovered: cloth, pieces of eye hooks, and a pair of gold hoop earrings.

Burial lot #8091 was located in Area L with the coordinates in the NW corner of the coffin S27'9" E99'4". The elevation at the base of the coffin in the NW corner was 725.06 famsl. The 6 sided adult coffin (75" x 21") contained the remains of 1 individual. The primary individual was face up with the head to the west facing east. There were no grave goods recovered for burial lot #8091.

Burial lot #8092 was located in Area L with the coordinates in the NW corner of the coffin S22'10" E99'4". The elevation at the base of the coffin in the NW corner was 725.40 famsl. The 6 sided adult coffin (72" x 19") contained the remains of 1 individual. The primary individual was face up with the head to the west facing east. There were no grave goods recovered for burial lot #8092.

Burial lot #8093 was located in Area L with the coordinates in the NW corner of the coffin S18'4" E100'3". The elevation at the base of the coffin in the NW corner was 725.06 famsl. The 6 sided adult coffin (72" x 21") contained the remains of 1 individual. The primary individual was face up with the head to the west facing east. There were no grave goods recovered for burial lot #8093.

Burial lot #8094 was located in Area L with the coordinates in the NW corner of the coffin S6'6" E100'3". The elevation at the base of the coffin in the NW corner was 725.56 famsl. The 6 sided adult coffin (72" x 21") contained the remains of 1 individual. The primary individual was face up with the head to the west facing east. There were no grave goods recovered for burial lot #8094.

Burial lot #8095 was located in Area L with the coordinates in the NW corner of the coffin S2'0" E101'6". The elevation at the base of the coffin in the NW corner was 725.80 famsl. The 6 sided adult coffin (77" x 19") contained the remains of 1 individual. The primary individual was face up with the head to the west facing east. The following grave goods for burial lot #8095 were recovered: crucifix and rosary beads.

Burial lot #8096 was located in Area L with the coordinates in the NW corner of the coffin N2'6" E101'8". The elevation at the base of the coffin in the NW corner was 725.89 famsl. The 6 sided adult coffin (80" x 21") contained the remains of 1 individual. The primary individual was face up with the head to the west facing east. There were no grave goods recovered for burial lot #8096.

Burial lot #8097 was located in Area L with the coordinates in the NW corner of the coffin N6'1" E102'1". The elevation at the base of the coffin in the NW corner was 725.99 famsl. The 6 sided adult coffin (73" x 21") contained the remains of 1 individual. The primary individual was face up with the head to the west facing east. The following grave goods for burial lot #8097 were recovered: religious medallion, a ring, and buttons.

Burial lot #8098 was located in Area L with the coordinates in the NW corner of the coffin N10'5" E102'9". The elevation at the base of the coffin in the NW corner was 725.61 famsl. The 6 sided adult coffin (74" x 15") contained the remains of 1 individual. The primary individual was face up with the head to the west facing east. There were no grave goods recovered for burial lot #8098.

Burial lot #8099 was located in Area L with the coordinates in the NW corner of the coffin N14'3" E103'1". The elevation at the base of the coffin in the NW corner was 726.19 famsl. The 6 sided adult coffin (51" x 15") had been disturbed by a trench and contained the remains of 1 individual. The primary individual was face up with the head to the west facing east. There were no grave goods recovered for burial lot #8099.

Burial lot #8100 was located in Area L with the coordinates in the NW corner of the coffin S15'9" E109'0". The elevation at the base of the coffin in the NW corner was 724.92 famsl. The 6 sided adult coffin (73" x 17") contained the remains of 1 individual. The primary individual was face up with the head to the west facing east. The following grave goods for burial lot #8100 were recovered: safety pin fragments.

Burial lot #8101 was located in Area L with the coordinates in the NW corner of the coffin S18'11" E108'9". The elevation at the base of the coffin in the NW corner was 724.89 famsl. The 6 sided adult coffin (76" x 17") contained the remains of 1 individual. The primary individual was face up with the head to the west facing east. There were no grave goods recovered for burial lot #8101.

Burial lot #8102 was located in Area L with the coordinates in the NW corner of the coffin S23'6" E108'6". The elevation at the base of the coffin in the NW corner was 724.68 famsl. The 6 sided adult coffin (72" x 18") contained the remains of 1 individual. The primary individual was face up with the head to the west facing east. The following grave goods for burial lot #8102 were recovered: buttons.

Burial lot #8103 was located in Area L with the coordinates in the NW corner of the coffin S27'10" E109'0". The elevation at the base of the coffin in the NW corner was 724.48 famsl. The shape of the adult coffin (69" x 16") was indeterminate due to disturbance. It contained the remains of 1 individual. The primary individual was face up with the head to the west facing east. The following grave goods for burial lot #8103 were recovered: safety pins.

Burial lot #8104 was located in Area L with the coordinates in the NW corner of the coffin S33'8" E108'9". The elevation at the base of the coffin in the NW corner was 724.66 famsl. The shape and dimensions of the coffin were indeterminate due to major root and water disturbance. The lot contained the remains of 1 individual. The primary individual was face up with the head to the west facing east. There were no grave goods recovered for burial lot #8104.

Burial lot #8105 was located in Area L with the coordinates in the NW corner of the coffin S36'10" E108'3". The elevation at the base of the coffin in the NW corner was 724.02 famsl. The 6 sided adult coffin (80" x 20") contained the remains of 1 individual. The primary individual was face up with the head to the west facing east. The following grave good for burial lot #8105 was recovered: newspaper fragment.

Burial lot #8106 was located in Area L with the coordinates in the NW corner of the coffin S40'11" E108'0". The elevation at the base of the coffin in the NW corner was 723.99 famsl. The 6 sided adult coffin (73" x 18") contained the remains of 1 individual. The primary individual was face up with the head to the west facing east. There were no grave goods recovered for burial lot #8106.

Burial lot #8107 was located in Area L with the coordinates in the NW corner of the coffin S45'3" E107'9". The elevation at the base of the coffin in the NW corner was 723.86 famsl. The 6 sided adult coffin (73" x 24") contained the remains of 1 individual. The primary individual was face up with the head to the west facing east. There were no grave goods recovered for burial lot #8107.

Burial lot #8108 was located in Area L with the coordinates in the NW corner of the coffin S48'10" E106'6". The elevation at the base of the coffin in the NW corner was 723.69 famsl. The 6 sided adult coffin (76" x 22") contained the remains of 1 individual. The primary individual was face up with the head to the west facing east. The following grave goods for burial lot #8108 were recovered: religious medallion and a crucifix.

Burial lot #8109 was located in Area L with the coordinates in the NW corner of the coffin S53'5" E106'3". The elevation at the base of the coffin in the NW corner was 723.46 famsl. The 6 sided adult coffin (72" x 21") contained the remains of 1 individual. The primary individual was face up with the head to the west facing east. There were no grave goods recovered for burial lot #8109.

Burial lot #8110 was located in Area L with the coordinates in the NW corner of the coffin S54'0" E116'0". The elevation at the base of the coffin in the NW corner was 722.79 famsl. The 6 sided adult coffin (70" x 18") contained the remains of 1 individual. The primary individual was face up with the head to the west facing east. There were no grave goods recovered for burial lot #8110.

Burial lot #8111 was located in Area L with the coordinates in the NW corner of the coffin S49'8" E116'2". The elevation at the base of the coffin in the NW corner was 722.98 famsl. The 6 sided adult coffin (67" x 15") contained the remains of 1 individual. The primary individual was face up with the head to the west facing east. The following grave goods for burial lot #8111 were recovered: cloth and buttons.

Burial lot #8112 was located in Area L with the coordinates in the NW corner of the coffin S45'10" E116'0". The elevation at the base of the coffin in the NW corner was 723.35 famsl. The 6 sided adult coffin (72" x 19") contained the remains of 1 individual. The primary individual was face up with the head to the west facing east. The following grave goods for burial lot #8112 were recovered: cloth and paper fragments.

Burial lot #8113 was located in Area L with the coordinates in the NW corner of the coffin S41'5" E116'9". The elevation at the base of the coffin in the NW corner was 723.34 famsl. The 6 sided adult coffin (76" x 21") contained the remains of 1 individual. The primary individual was face up with the head to the west facing east. The following grave good for burial lot #8113 was recovered: a straight pin.

Burial lot #8114 was located in Area L with the coordinates in the NW corner of the coffin S37'1" E116'8". The elevation at the base of the coffin in the NW corner was 723.36 famsl. The shape of the adult coffin (76" x 11") was indeterminate due to disturbance. It contained the remains of 1 individual. The primary individual was face up with the head to the west facing east. The following grave good for burial lot #8114 was recovered: a pair of scissors.

Burial lot #8115 was located in Area L with the coordinates in the NW corner of the coffin S33'5" E116'11". The elevation at the base of the coffin in the NW corner was 723.42 famsl. The 6 sided adult coffin (75" x 19") contained the remains of 1 individual. The primary individual was face up with the head to the west facing east. There were no grave goods recovered for burial lot #8115.

Burial lot #8116 was located in Area L with the coordinates in the NW corner of the coffin S28'6" E117'5". The elevation at the base of the coffin in the NW corner was 723.80 famsl. The 6 sided adult coffin (73" x 19") contained the remains of 1 individual. The primary individual was face up with the head to the west facing east. There were no grave goods recovered for burial lot #8116.

Burial lot #8117 was located in Area L with the coordinates in the NW corner of the coffin S24'0" E117'4". The elevation at the base of the coffin in the NW corner was 723.98 famsl. The 6 sided adult coffin (72" x 20") contained the remains of 1 individual. The primary individual was face up with the head to the west facing east. The following grave good for burial lot #8117 was recovered: a safety pin.

Burial lot #8118 was located in Area L with the coordinates in the NW corner of the coffin S19'3" E117'6". The elevation at the base of the coffin in the NW corner was 723.88 famsl. The 6 sided adult coffin (73" x 21") contained the remains of 1 individual. The primary individual was face up with the head to the west facing east. The following grave good for burial lot #8118 was recovered: one unidentifiable copper fragment.

Burial lot #8119 was located in Area L with the coordinates in the NW corner of the coffin S13'2" E118'0". The elevation at the base of the coffin in the NW corner was 724.26 famsl. The 6 sided adult coffin (70" x 23") contained the remains of 1 individual. The primary individual was face up with the head to the west facing east. There were no grave goods recovered for burial lot #8119.

Burial lot #8120 was located in Area L with the coordinates in the NW corner of the coffin N12'5" E128'0". The elevation at the base of the coffin in the NW corner was 724.05 famsl. The 6 sided adult coffin (74" x 19") contained the remains of 1 individual. The primary individual was face up with the head to the west facing east. There were no grave goods recovered for burial lot #8120.

Burial lot #8121 was located in Area L with the coordinates in the NW corner of the coffin N9'0" E127'6". The elevation at the base of the coffin in the NW corner was 723.47 famsl. The 6 sided adult coffin (75" x 19") contained the remains of 1 individual. The primary individual was face up with the head to the west facing east. The following grave goods for burial lot #8121 were recovered: a pair of shoes.

Burial lot #8122 was located in Area L with the coordinates in the NW corner of the coffin N54'9" E27'2". The elevation at the base of the coffin in the NW corner was 723.98 famsl. The 6 sided adult coffin (71" x 18") contained the remains of 1 individual. The primary individual was face up with the head to the west facing east. There were no grave goods recovered for burial lot #8122.

Burial lot #8123 was located in Area L with the coordinates in the NW corner of the burial pit stain N1'7" E127'6". The elevation of the stain in the NW corner was 724.633 famsl. This lot was disturbed to the extent that coffin wood no longer existed. The skeletal elements of 1 individual were present within the burial pit stain. Position of the remains was indeterminate due to the disturbance. There were no grave goods recovered for burial lot #8123.

Burial lot #8124 was located in Area L with the coordinates in the NW corner of the coffin S3'3" E127'6". The elevation at the base of the coffin in the NW corner was 723.21 famsl. The 6 sided adult coffin (77" x 18") contained the remains of 1 individual. The primary individual was face up with the head to the west facing east. The following grave good for burial lot #8124 was recovered: cloth.

Burial lot #8125 was located in Area L with the coordinates in the NW corner of the coffin S15'1" E126'9". The elevation at the base of the coffin in the NW corner was 723.77 famsl. The 6 sided adult coffin (78" x 21") contained the remains of 1 individual. The primary individual was face up with the head to the west facing east. The following grave good for burial lot #8125 was recovered: a safety pin.

Burial lot #8126 was located in Area L with the coordinates in the NW corner of the coffin S19'0" E126'2". The elevation at the base of the coffin in the NW corner was 723.23 famsl. The 6 sided adult coffin (72" x 18") contained the remains of 1 individual. The primary individual was face up with the head to the west facing east. There were no grave goods recovered for burial lot #8126.

Burial lot #8127 was located in Area L with the coordinates in the NW corner of the coffin S23'11" E126'1". The elevation at the base of the coffin in the NW corner was 723.33 famsl. The shape of the adult coffin (72" x 21") was indeterminate due to coffin wood decay. It contained the remains of 1 individual. The primary individual was face up with the head to the west facing east. There were no grave goods recovered for burial lot #8127.

Burial lot #8128 was located in Area L with the coordinates in the NW corner of the coffin S29'0" E126'0". The elevation at the base of the coffin in the NW corner was 723.05 famsl. The 6 sided adult coffin (74" x 19") contained the remains of 1 individual. The primary individual was face up with the head to the west facing east. There were no grave goods recovered for burial lot #8128.

Burial lot #8129 was located in Area L with the coordinates in the NW corner of the coffin S33'4" E125'6". The elevation at the base of the coffin in the NW corner was 722.71 famsl. The shape of the adult coffin (76" x 23") was indeterminate due to coffin wood decay. It contained the remains of 1 individual. The primary individual was face up with the head to the west facing east. The following grave goods for burial lot #8129 were recovered: a rubber shoe heel, clay marbles, buttons, a safety pin, and a cross.

Burial lot #8130 was located in Area L with the coordinates in the NW corner of the coffin S37'8" E125'4". The elevation at the base of the coffin in the NW corner was 722.99 famsl. The 6 sided adult coffin (74" x 16") contained the remains of 1 individual. The primary individual was face up with the head to the west facing east. The following grave good for burial lot #8130 was recovered: a safety pin.

Burial lot #8131 was located in Area L with the coordinates in the NW corner of the coffin S42'10" E125'6". The elevation at the base of the coffin in the NW corner was 722.84 famsl. The 6 sided adult coffin (72" x 16") contained the remains of 1 individual. The primary individual was face up with the head to the west facing east. There were no grave goods recovered for burial lot #8131.

Burial lot #8132 was located in Area L with the coordinates in the NW corner of the coffin S46'1" E124'7". The elevation at the base of the coffin in the NW corner was 722.79 famsl. The 6 sided adult coffin (76" x 18") contained the remains of 1 individual. The primary individual was face up with the head to the west facing east. There were no grave goods recovered for burial lot #8132.

Burial lot #8133 was located in Area L with the coordinates in the NW corner of the coffin S50'6" E124'7". The elevation at the base of the coffin in the NW corner was 722.57 famsl. The 6 sided adult coffin (69" x 18") contained the remains of 1 individual. The primary individual was face up with the head to the west facing east. There were no grave goods recovered for burial lot #8133.

Burial lot #8134 was located in Area L with the coordinates in the NW corner of the coffin S54'5" E124'6". The elevation at the base of the coffin in the NW corner was 722.20 famsl. The 6 sided adult coffin (76" x 19") contained the remains of 1 individual. The primary individual was face up with the head to the west facing east. There were no grave goods recovered for burial lot #8134.

Burial lot #8135 was located in Area L with the coordinates in the NW corner of the coffin S54'9" E133'6". The elevation at the base of the coffin in the NW corner was 721.71 famsl. The 6 sided adult coffin (78" x 19") contained the remains of 1 individual. The primary individual was face up with the head to the west facing east. No grave goods were recovered for burial lot #8135.

Burial lot #8136 was located in Area L with the coordinates in the NW corner of the coffin S50'9" E123'9". The elevation at the base of the coffin in the NW corner was 721.78 famsl. The 6 sided adult coffin (75" x 19") contained the remains of 1 individual. The primary individual was face up with the head to the west facing east. No grave goods were recovered for burial lot #8136.

Burial lot #8137 was located in Area L with the coordinates in the NW corner of the coffin S46'7" E133'4". The elevation at the base of the coffin in the NW corner was 722.08 famsl. The 6 sided adult coffin (77" x 17") contained the remains of 1 individual. The primary individual was face up with the head to the west facing east. No grave goods were recovered for burial lot #8137.

Burial lot #8138 was located in Area L with the coordinates in the NW corner of the coffin S42'6" E133'10". The elevation at the base of the coffin in the NW corner was 722.29 famsl. The 6 sided adult coffin (74" x 21") contained the remains of 1 individual. The primary individual was face up with the head to the west facing east. No grave goods were recovered for burial lot #8138.

Burial lot #8139 was located in Area L with the coordinates in the NW corner of the coffin S39'0" E134'0". The elevation at the base of the coffin in the NW corner was 722.42 famsl. The shape of the adult coffin (72" x 11") was indeterminate due to coffin wood decay. It contained the remains of 1 individual. The primary individual was face up with the head to the west facing east. The following grave goods were recovered for burial lot #8139: buttons.

Burial lot #8140 was located in Area L with the coordinates in the NW corner of the coffin S33'3" E134'3". The elevation at the base of the coffin in the NW corner was 722.38 famsl. The 6 sided adult coffin (78" x 18") contained the remains of 1 individual. The primary individual was face up with the head to the west facing east. The following grave goods were recovered for burial lot #8140: a safety pin and a ring.

Burial lot #8141 was located in Area L with the coordinates in the NW corner of the coffin S28'9" E135'0". The elevation at the base of the coffin in the NW corner was 722.51 famsl. The 6 sided adult coffin (74" x 19") contained the remains of 1 individual. The primary individual was face up with the head to the west facing east. No grave goods were recovered for burial lot #8141.

Burial lot #8142 was located in Area L with the coordinates in the NW corner of the coffin S24'5" E134'8". The elevation at the base of the coffin in the NW corner was 722.69 famsl. The 6 sided adult coffin (70" x 22") contained the remains of 1 individual. The primary individual was face up with the head to the west facing east. No grave goods were recovered for burial lot #8142.

Burial lot #8143 was located in Area L with the coordinates in the NW corner of the coffin S25'0" E143'2". The elevation at the base of the coffin in the NW corner was 721.97 famsl. The 6 sided adult coffin (77" x 18") contained the remains of 1 individual. The primary individual was face up with the head to the west facing east. No grave goods were recovered for burial lot #8143.

Burial lot #8144 was located in Area L with the coordinates in the NW corner of the coffin S29'5" E142'9". The elevation at the base of the coffin in the NW corner was 721.11 famsl. The 6 sided adult coffin (74" x 16") contained the remains of 1 individual. The primary individual was face up with the head to the west facing east. No grave goods were recovered for burial lot #8144.

Burial lot #8145 was located in Area L with the coordinates in the NW corner of the coffin S33'4" E142'11". The elevation at the base of the coffin in the NW corner was 721.59 famsl. The shape of the adult coffin (72" x 18") was indeterminate due to coffin wood decay. It contained the remains of 1 individual. The primary individual was face up with the head to the west facing east. No grave goods were recovered for burial lot #8145.

Burial lot #8146 was located in Area L with the coordinates in the NW corner of the coffin S37'7" E143'0". The elevation at the base of the coffin in the NW corner was ***** famsl. The 4 sided adult coffin (72" x 17") contained the remains of 1 individual. The primary individual was face up with the head to the west facing east. The following grave goods were recovered for burial lot #8146: buttons.

Burial lot #8147 was located in Area L with the coordinates in the NW corner of the coffin S42'10" E143'0". The elevation at the base of the coffin in the NW corner was ***** famsl. The 6 sided adult coffin (73" x 19") contained the remains of 1 individual. The primary individual was face up with the head to the west facing east. No grave goods were recovered for burial lot #8147.

Burial lot #8148 was located in Area L with the coordinates in the NW corner of the coffin S46'11" E142'7". The elevation at the base of the coffin in the NW corner was 721.07 famsl. The 6 sided adult coffin (72" x 18") contained the remains of 1 individual. The primary individual was face up with the head to the west facing east. No grave goods were recovered for burial lot #8148.

Burial lot #8149 was located in Area L with the coordinates in the NW corner of the coffin S50'6" E142'0". The elevation at the base of the coffin in the NW corner was 720.92 famsl. The 6 sided adult coffin (72" x 20") contained the remains of 1 individual. The primary individual was face up with the head to the west facing east. The following grave goods were recovered for burial lot #8149: cloth fragments.

Burial lot #8150 was located in Area L with the coordinates in the NW corner of the coffin S55'6" E142'3". The elevation at the base of the coffin in the NW corner was 720.99 famsl. The 6 sided adult coffin (70" x 18") contained the remains of 1 individual. The primary individual was face up with the head to the west facing east. No grave goods were recovered for burial lot #8150.

Burial lot #8151 was located in Area L with the coordinates in the NW corner of the coffin S55'9" E151'6". The elevation at the base of the coffin in the NW corner was ***** famsl. The 6 sided adult coffin (75" x 18") contained the remains of 1 individual. The primary individual was face up with the head to the west facing east. No grave goods were recovered for burial lot #8151.

Burial lot #8152 was located in Area L with the coordinates in the NW corner of the coffin S51'1" E151'7". The elevation at the base of the coffin in the NW corner was 719.99 famsl. The 6 sided adult coffin (72" x 19") contained the remains of 1 individual. The primary individual was face up with the head to the west facing east. No grave goods were recovered for burial lot #8152.

Burial lot #8153 was located in Area L with the coordinates in the NW corner of the coffin S47'1" E151'10". The elevation at the base of the coffin in the NW corner was 720.31 famsl. The 6 sided adult coffin (71" x 15.5") contained the remains of 1 individual. The primary individual was face up with the head to the west facing east. No grave goods were recovered for burial lot #8153.

Burial lot #8154 was located in Area L with the coordinates in the NW corner of the coffin S42'10" E142'5". The elevation at the base of the coffin in the NW corner was 720.32 famsl. The 6 sided adult coffin (75" x 18") contained the remains of 1 individual. The primary individual was face up with the head to the west facing east. The following grave good was recovered for burial lot #8154: a gold ring.

Burial lot #8155 was located in Area L with the coordinates in the NW corner of the coffin S37'8" E152'5". The elevation at the base of the coffin in the NW corner was 720.56 famsl. The 6 sided adult coffin (75" x 20") contained the remains of 1 individual. The primary individual was face up with the head to the west facing east. No grave goods were recovered for burial lot #8155.

Burial lot #8156 was located in Area L with the coordinates in the NW corner of the coffin S33'10" E152'6". The elevation at the base of the coffin in the NW corner was 720.56 famsl. The shape of the adult coffin (63" x 21") was indeterminate due to coffin wood decay. It contained the remains of 1 individual. The primary individual was face up with the head to the west facing east. No grave goods were recovered for burial lot #8156.

Burial lot #8157 was located in Area L with the coordinates in the NW corner of the coffin S29'8" E152'7". The elevation at the base of the coffin in the NW corner was 720.96 famsl. The 6 sided adult coffin (75" x 23") contained the remains of 1 individual. The primary individual was face up with the head to the west facing east. No grave goods were recovered for burial lot #8157.

Burial lot #8158 was located in Area L with the coordinates in the NW corner of the coffin S25'1" E152'0". The elevation at the base of the coffin in the NW corner was 721.22 famsl. The 6 sided adult coffin (75" x 20") contained the remains of 1 individual. The primary individual was face up with the head to the west facing east. No grave goods were recovered for burial lot #8158.

Burial lot #8159 was located in Area L with the coordinates in the NW corner of the coffin S29'8" E161'0". The elevation at the base of the coffin in the NW corner was 720.22 famsl. The 6 sided adult coffin (75" x 19") contained the remains of 1 individual. The primary individual was face up with the head to the west facing east. No grave goods were recovered for burial lot #8159.

Burial lot #8160 was located in Area L with the coordinates in the NW corner of the coffin S44'3" E151'0". The elevation at the base of the coffin in the NW corner was 719.87 famsl. The 6 sided adult coffin (67" x 16") contained the remains of 1 individual. The primary individual was face up with the head to the west facing east. No grave goods were recovered for burial lot #8160.

Burial lot #8161 was located in Area L with the coordinates in the NW corner of the coffin S38'5" E161'3". The elevation at the base of the coffin in the NW corner was 719.81 famsl. The 6 sided adult coffin (75" x 24") contained the remains of 1 individual. The primary individual was face up with the head to the west facing east. The following grave goods were recovered for burial lot #8161: cloth, buttons, a bottle, one shoe, snaps, and safety pins.

Burial lot #8162 was located in Area L with the coordinates in the NW corner of the coffin S42'11" E160'7". The elevation at the base of the coffin in the NW corner was 719.44 famsl. The 6 sided adult coffin (73" x 21") contained the remains of 1 individual. The primary individual was face up with the head to the west facing east. No grave goods were recovered for burial lot #8162.

Burial lot #8163 was located in Area L with the coordinates in the NW corner of the coffin S47'2" E160'3". The elevation at the base of the coffin in the NW corner was 718.92 famsl. The 6 sided adult coffin (72" x 18") contained the remains of 1 individual. The primary individual was face up with the head to the west facing east. No grave goods were recovered for burial lot #8163.

Burial lot #8164 was located in Area L with the coordinates in the NW corner of the coffin S51'9" E160'3". The elevation at the NW corner datum was 720.893 famsl. The 6 sided adult coffin (78" x 22") contained the remains of 1 individual. The primary individual was lying on its right side with the head to the west facing east. The following grave good was recovered for burial lot #8164: a grave marker post.

Burial lot #8165 was located in Area L with the coordinates in the NW corner of the coffin S56'1" E160'4". The elevation at the base of the coffin in the NW corner was 718.55 famsl. The 6 sided adult coffin (71" x 18") contained the remains of 1 individual. The primary individual was face up with the head to the west facing east. No grave goods were recovered for burial lot #8165.

Burial lot #8166 was located in Area L with the coordinates in the NW corner of the coffin N4'4" E135'10". The elevation at the base of the coffin in the NW corner was 723.17 famsl. The shape of the adult coffin (74" x 19") was indeterminate due to coffin wood decay. It contained the remains of 1 individual. The primary individual was face up with the head to the west facing east. The following grave goods were recovered for burial lot #8166.

Burial lot #8167 was located in Area L with the coordinates in the NW corner of the coffin N8'5" E136'5". The elevation at the base of the coffin in the NW corner was 722.56 famsl. The shape of the adult coffin (72" x 16") was indeterminate due to coffin wood decay. It contained the remains of 1 individual. The primary individual was face up with the head to the west facing east. The following grave goods were recovered for burial lot #8167: buttons, snaps, one shoe heel, buckles, and a fragment of plastic.

Burial lot #8168 was located in Area L with the coordinates in the NW corner of the coffin N12'9" E137'0". The elevation at the base of the coffin in the NW corner was 723.57 famsl. The shape of the adult coffin (72" x 25") was indeterminate due to coffin wood decay. It contained the remains of 1 individual. The primary individual was face up with the head to the west facing east. No grave goods were recovered for burial lot #8168.

Burial lot #8169 was located in Area L with the coordinates in the NW corner of the coffin N12'3" E145'6". The elevation at the base of the coffin in the NW corner was 722.43 famsl. The shape of the adult coffin (72" x 18") was indeterminate due to coffin wood decay. It contained the remains of 1 individual. The primary individual was face up with the head to the west facing east. No grave goods were recovered for burial lot #8169.

Burial lot #8170 was located in Area L with the coordinates in the NW corner of the coffin N9'2" E144'9". The elevation at the base of the coffin in the NW corner was 722.16 famsl. The 6 sided adult coffin (72" x 18") contained the remains of 1 individual. The primary individual was face up with the head to the west facing east. No grave goods were recovered for burial lot #8170.

Burial lot #8171 was located in Area L with the coordinates in the NW corner of the coffin N4'3" E144'9". The elevation at the base of the coffin in the NW corner was 722.18 famsl. The 6 sided adult coffin (68" x 18") contained the remains of 1 individual. The primary individual was face up with the head to the west facing east. The following grave good was recovered for burial lot #8171: a straight pin.

Burial lot #8172 was located in Area L with the coordinates in the NW corner of the coffin N4'0" E154'3". The elevation at the base of the coffin in the NW corner was 721.40 famsl. The 6 sided adult coffin (72" x 17") contained the remains of 1 individual. The primary individual was face up with the head to the west facing east. The following grave good was recovered for burial lot #8172: wire.

Burial lot #8173 was located in Area L with the coordinates in the NW corner of the coffin N7'6" E154'0". The elevation at the base of the coffin in the NW corner was 721.42 famsl. The 6 sided adult coffin (69" x 19") contained the remains of 1 individual. The primary individual was face up with the head to the west facing east. The following grave goods were recovered for burial lot #8173: buttons.

Burial lot #8174 was located in Area L with the coordinates in the NW corner of the coffin N10'2" E154'6". The elevation at the base of the coffin in the NW corner was 721.68 famsl. The shape and width of the adult coffin (length 69.5") contained the remains of 1 individual plus an additional primary individual (lot #8198) beneath lot #8174 yet within the coffin. Lot #8174 was face up with the head to the west facing east. Burial lot #8198 was face up with the head to the east facing west. The following grave good was recovered from the coffin of burial lots #8174 and #8198: glass tubing.

Burial lot #8175 was located in Area L with the coordinates in the NW corner of the burial pit stain N15'9" E154'6". The elevation at the base of the stain in the NW corner was 712.96 famsl. The shape and dimensions of the coffin were indeterminate due to major disturbance. The stain contained the remains of 1 individual. The primary individual was face up with the head to the west facing east. The following grave good was recovered for burial lot #8175: a safety pin.

Burial lot #8176 was located in Area L with the coordinates of the of the NW corner of the burial pit stain N19'2" E159'8". The burial had been entirely disturbed and all that remained was the eastern most end of a pit stain. The elevation of the stain in its NW corner was 722.003 famsl. No grave goods or skeletal elements were recovered for burial lot #8176.

Burial lot #8177 was located in Area L with the coordinates in the NW corner of the coffin N23'7" E162'3". The elevation at the base of the coffin in the NW corner was 721.57 famsl. The 6 sided adult coffin (80" x 18") contained the remains of 1 individual. The primary individual was face up with the head to the west facing east. No grave goods were recovered for burial lot #8177.

Burial lot #8178 was located in Area L with the coordinates in the NW corner of the coffin N20'5" E162'3". The elevation at the base of the coffin in the NW corner was 720.95 famsl. The 6 sided adult coffin (79" x 16.5") contained the remains of 1 individual. The primary individual was face up with the head to the west facing east. No grave goods were recovered for burial lot #8178.

Burial lot #8179 was located in Area L with the coordinates in the NW corner of the coffin N17'0" E163'0". The elevation at the base of the coffin in the NW corner was 721.40 famsl. The 6 sided adult coffin (67" x 13") contained the remains of 1 individual. The primary individual was face up with the head to the west facing east. The following grave good was recovered for burial lot #8179: a circular metal tag inscribed with #24.

Burial lot #8180 was located in Area L with the coordinates in the NW corner of the coffin N14'2" E162'9". The elevation at the base of the coffin in the NW corner was 720.87 famsl. The shape of the adult coffin (70" x 16") contained the remains of 1 individual plus and additional primary individual (lot # 8199) beneath lot#8180 yet within the coffin. Lot #8180 was face down with the head to the west and lot #8199 was face up with the head to the east facing west. The following grave goods were recovered from the coffin of burial lots #8180 and #8199: a buckle, and unidentifiable metal pieces.

Burial lot #8181 was located in Area L with the coordinates in the NW corner of the coffin N12'3" E162'9". The elevation of the NW datum nail was 722.003 famsl. The 6 sided adult coffin (63" x 25") contained the remains of 1 individual. The primary individual was face up with the head to the west facing east. No grave goods were recovered for burial lot #8181.

Burial lot #8182 was located in Area L with the coordinates in the NW corner of the coffin N7'6" E161'9". The elevation at the base of the coffin in the NW corner was 720.74 famsl. The 6 sided adult coffin (74" x 15") contained the remains of 1 individual. The primary individual was face up with the head to the west facing east. No grave goods were recovered for burial lot #8182.

Burial lot #8183 was located in Area L with the coordinates in the NW corner of the coffin N3'5" E163'0". The elevation at the base of the coffin in the NW corner was ***** famsl. The shape and dimensions of the coffin was indeterminate due to disturbance and coffin wood decay. It contained the remains of 1 individual. The primary individual was face up with the head to the west facing east. No grave goods were recovered for burial lot #8183.

Burial lot #8184 was located in Area L with the coordinates in the NW corner of the coffin N1'1" E162'1". The elevation at the base of the coffin in the NW corner was 720.46 famsl. The 6 sided adult coffin (72" x 17") contained the remains of 1 individual. The primary individual was face up with the head to the west facing east. No grave goods were recovered for burial lot #8184.

Burial lot #8187 was located in Area L with the coordinates in the NW corner of the coffin N22'4" E172'3". The elevation at the base of the coffin in the NW corner was 720.36 famsl. The 6 sided adult coffin (70" x 19") contained the remains of 1 individual. The primary individual was face up with the head to the west facing east. No grave goods were recovered for burial lot #8187.

Burial lot #8188 was located in Area L with the coordinates in the NW corner of the coffin N18'9" E171'7". The elevation at the base of the coffin in the NW corner was 720.09 famsl. The 6 sided adult coffin (74" x 18") contained the remains of 1 individual. The primary individual was face up with the head to the west facing east. No grave goods were recovered for burial lot #8188.

Burial lot #8189 was located in Area L with the coordinates in the NW corner of the coffin N14'11" E171'11". The elevation at the base of the coffin in the NW corner was 719.98 famsl. The 6 sided adult coffin (67" x 17") contained the remains of 1 individual. The primary individual was face up with the head to the west facing east. The following grave goods were recovered for burial lot #8189: buttons.

Burial lot #8190 was located in Area L with the coordinates in the NW corner of the coffin N10'9" E171'4". The elevation at the base of the coffin in the NW corner was 720.02 famsl. The 6 sided adult coffin (63" x 18") contained the remains of 1 individual. The primary individual was face up with the head to the west facing east. No grave goods were recovered for burial lot #8190.

Burial lot #8191 was located in Area L with the coordinates in the NW corner of the coffin S33'9" E170'3". The elevation at the base of the coffin in the NW corner was 719.35 famsl. The 6 sided adult coffin (72" x 21") contained the remains of 1 individual. The primary individual was face up with the head to the west facing east. No grave goods were recovered for burial lot #8191.

Burial lot #8192 was located in Area L with the coordinates in the NW corner of the coffin S56'0" E169'5". The elevation at the base of the coffin in the NW corner was 717.64 famsl. The 6 sided adult coffin (75" x 15") contained the remains of 1 individual. The primary individual was face up with the head to the west facing east. The following grave goods were recovered for burial lot #8192: copper wire and one boot.

Burial lot #8193 was located in Area L with the coordinates in the NW corner of the coffin S51'7" E169'9". The elevation at the base of the coffin in the NW corner was 718.12 famsl. The 6 sided adult coffin (70" x 20") contained the remains of 1 individual. The primary individual was face up with the head to the west facing east. The following grave goods were recovered for burial lot #8193: rosary (with 45 decorated bone beads), a crucifix, and a medallion.

Burial lot #8194 was located in Area L with the coordinates in the NW corner of the coffin S47'9" E170'0". The elevation at the base of the coffin in the NW corner was 718.20 famsl. The 6 sided adult coffin (72" x 18") contained the remains of 1 individual. The primary individual was face up with the head to the west facing east. The following grave good was recovered for burial lot #8194: a safety pin.

Burial lot #8195 was located in Area L with the coordinates in the NW corner of the coffin S44'6" E169'9". The elevation at the base of the coffin in the NW corner was 718.67 famsl. The 6 sided adult coffin (72" x 19") contained the remains of 1 individual. The primary individual was face up with the head to the west facing east. No grave goods were recovered for burial lot #8195.

Burial lot #8196 was located in Area L with the coordinates in the NW corner of the coffin S38'11" E169'9". The elevation at the base of the coffin in the NW corner was 719.05 famsl. The 6 sided adult coffin (77" x 21") contained the remains of 1 individual. The primary individual was face up with the head to the west facing east. No grave goods were recovered for burial lot #8196.

Burial lot #8197 was located in Area L with the coordinates in the NW corner of the coffin N3'6" E174'9". The elevation at the base of the coffin in the NW corner was 719.33 famsl. The shape of the coffin (34" x 14") was indeterminate due to trench disturbance and only half of the coffin and pit stain remained. It contained the partial remains of 1 individual. The positioning of the individual was indeterminate. No grave goods were recovered for burial lot #8197.

Burial lot #9001 was located in Area N with the coordinates in the NW corner of the coffin N225'10" E181'8". The elevation at the base of the coffin in the NW corner was 724.57 famsl. The 4 sided sub-adult coffin (22.5" x 7") contained the remains of 1 individual. The primary individual was face up with the head to the west facing east. No grave goods were recovered for burial lot #9001.

Burial lot #9002 was located in Area N with the coordinates in the NW corner of the coffin N228'9" E181'9". The elevation at the base of the coffin in the NW corner was 724.48 famsl. The 4 sided sub-adult coffin (24" x 9") contained the remains of 1 individual. The position of the primary individual was indeterminate with the head to the west facing east. No grave goods were recovered for burial lot #9002.

Burial lot #9003 was located in Area N with the coordinates in the NW corner of the burial pit stain N231'6" E182'0". The elevation at the datum in the NW corner was 725.343 famsl. This burial lot had been completely disturbed. All that remained was the pit stain, 2 nails, and a small glass tube. No skeletal elements were recovered.

Burial lot #9004 was located in Area N with the coordinates in the NW corner of the coffin N234'1" E177'7". The elevation at the base of the coffin in the NW corner was 724.78 famsl. The length of the 4 sided sub-adult coffin (width 8") was indeterminate due to disturbance. It contained the remains of 1 individual. The primary individual was face up with the head to the west facing east. The following grave goods were recovered for burial lot #9004.

Burial lot #9005 was located in Area N with the coordinates in the NW corner of the coffin N236'6" E166'10". The elevation at the base of the coffin in the NW corner was 724.21 famsl. The shape of the sub-adult coffin (25.5" x 8.5") contained the remains of 1 individual. The position of the primary individual was indeterminate due to the small amount of bone recovered. The following grave goods were recovered for burial lot #9005: buttons and safety pins.

Burial lot #9006 was located in Area N with the coordinates in the NW corner of the coffin N233'6" E168'2". The elevation at the base of the coffin in the NW corner was 724.20 famsl. The shape of the sub-adult coffin (22.5" x 8") was indeterminate due to coffin wood decay. It contained the remains of 1 individual. The primary individual was face up with the head to the west facing east. No grave goods were recovered for burial lot #9006.

Burial lot #9007 was located in Area N with the coordinates in the NW corner of the coffin N220'5" E167'0". The elevation at the base of the coffin in the NW corner was 724.61 famsl. The 4 sided sub-adult coffin (22.5" x 7.5") contained the remains of 1 individual. The position of the primary individual was indeterminate and lying with the head to the west facing east. The following grave good was recovered for burial lot #9007: a button.

Burial lot #9008 was located in Area N with the coordinates in the NW corner of the coffin N228'0" E168'4". The elevation at the base of the coffin in the NW corner was 724.77 famsl. The 6 sided sub-adult coffin (26" x 10") contained the remains of 1 individual. The primary individual was face up with the head to the west facing east. The following grave good was recovered for burial lot #9008: a safety pin.

Burial lot #9009 was located in Area N with the coordinates in the NW corner of the coffin N218'3" E180'0". The elevation at the base of the coffin in the NW corner was 724.67 famsl. The 6 sided sub-adult coffin (23" x 11") contained the remains of 1 individual. The position of the primary individual was indeterminate with the head to the west facing east. The following grave goods were recovered for burial lot #9009: buttons, safety pins, and cloth.

Burial lot #9010 was located in Area N with the coordinates in the NW corner of the estimated position of the coffin N226'6" E167'11". The elevation at the datum in the NW corner was 726.073 famsl. The burial had been heavily disturbed by water and roots. Nails were all that remained of the constructed coffin (width 8"). This lot contained the remains of 1 individual. The primary individual was face up with the head to the west facing east. The following grave good was recovered for burial lot #9010: rubber tubing.

Burial lot #9011 was located in Area N with the coordinates in the NW corner of the coffin N228'9" E167'7". The elevation at the base of the coffin in the NW corner was 725.47 famsl. The shape of the sub-adult coffin (22" x 5") was indeterminate due to disturbance. It contained the remains of 1 individual. The position of the primary individual was indeterminate with the head to the west facing east. No grave goods were recovered for burial lot #9011.

Burial lot #9012 was located in Area N with the coordinates in the NW corner of the coffin N231'4" E167'6". The elevation at the base of the coffin in the NW corner was 725.56 famsl. The 4 sided sub-adult coffin (21" x 7") contained the remains of 1 individual. The primary individual was face up with the head to the west facing east. No grave goods were recovered for burial lot #9012.

Burial lot #9013 was located in Area N with the coordinates in the NW corner of the coffin N232'7" E168'3". The elevation at the base of the coffin in the NW corner was 725.39 famsl. The 4 sided sub-adult coffin (30" x 8") contained the remains of 1 individual. The position of the primary individual was indeterminate with the head to the west facing east. The following grave goods were recovered for burial lot #9013: safety pins.

Burial lot #9014 was located in Area N with the coordinates in the NW corner of the coffin N235'11" E168'6". The elevation at the base of the coffin in the NW corner was 725.13 famsl. The 4 sided sub-adult coffin (29" x 8") contained the remains of 1 individual. The position of the primary individual was indeterminate with the head to the west facing east. The following grave goods were recovered for burial lot #9014: cloth and safety pins.

Burial lot #9015 was located in Area N with the coordinates in the NW corner of the coffin N236'2" E163'8". The elevation at the base of the coffin in the NW corner was 725.77 famsl. The 4 sided sub-adult coffin (29" x 7") contained the remains of 1 individual. The position of the primary individual was indeterminate with the head to the west facing east. The following grave goods were recovered for burial lot #9015: safety pins.

Burial lot #9016 was located in Area N with the coordinates in the NW corner of the coffin N233'11" E164'0". The elevation at the base of the coffin in the NW corner was 725.78 famsl. The 6 sided sub-adult coffin (30" x 9") contained the remains of 1 individual. The primary individual was face up with the head to the west facing east. The following grave goods were recovered for burial lot #9016: safety pins.

Burial lot #9017 was located in Area N with the coordinates in the NW corner of the burial pit stain N23'9" E163'3". The elevation at the datum NW corner was 726.053 famsl. The burial lot had been completely disturbed and no skeletal elements, grave goods, coffin hardware, or coffin wood remained.

Burial lot #9018 was located in Area N with the coordinates in the NW corner of the coffin N229'1" E165'5". The elevation at the base of the coffin in the NW corner was 725.83 famsl. The 4 sided sub-adult coffin (30" x 7") contained the remains of 1 individual. The primary individual was face up with the head to the west facing east. The following grave goods were recovered for burial lot #9018: safety pins and buttons.

Burial lot #9019 was located in Area N with the coordinates in the NW corner of the coffin N226'1" E163'6". The elevation at the base of the coffin in the NW corner was 726.23 famsl. The 6 sided sub-adult coffin (32" x 6") contained the remains of 1 individual. The primary individual was face up with the head to the west facing east. The following grave goods were recovered for burial lot #9019: safety pins.

Burial lot #9020 was located in Area N with the coordinates in the NW corner of the coffin N223'4" E163'6". The elevation at the base of the coffin in the NW corner was 726.09 famsl. The 6 sided sub-adult coffin (18" x 7") contained the remains of 1 individual. The primary individual was face up with the head to the east facing west. No grave goods were recovered for burial lot #9020.

Burial lot #9021 was located in Area N with the coordinates of the NW datum N223'10" E156'6". The elevation at the NW datum was 726.973 famsl. Burial was completely disturbed. No skeletal elements, grave goods, coffin hardware, or coffin wood remained.

Burial lot #9022 was located in Area N with the coordinates in the NW corner of the burial pit stain N227'8" E156'9". The elevation at the NW datum was 727.003 famsl. The coffin wood was completely deteriorated and so its shape and dimensions were indeterminate. The lot contained the remains of 1 individual. The positioning of the individual was indeterminate due to the dry, hard clay attaching itself to the skeletal elements. The following grave goods were recovered for burial lot #9022: a safety pin and a button.

Burial lot #9023 was located in Area N with the coordinates in the NW corner of the coffin N228'1" E158'6". The elevation at the NW datum was 726.682 famsl. The 4 sided sub-adult coffin (30" x 10") contained the remains of 1 individual. The primary individual was face up with the head to the west facing east. The following grave goods were recovered for burial lot #9023: safety pins and buttons.

Burial lot #9024 was located in Area N with the coordinates in the NW corner of the coffin N231'5" E158'8". The elevation at the NW datum was 726.623 famsl. The 4 sided sub-adult coffin (25" x 7") contained the remains of 1 individual. The position of the primary individual was indeterminate with the head to the west facing east. The following grave goods were recovered for burial lot #9024: a button and a safety pin.

Burial lot #9025 was located in Area N with the coordinates in the NW corner of the coffin N232'7" E158'7". The elevation at the base of the coffin in the NW corner was 726.36 famsl. The 4 sided sub-adult coffin (32" x 9") contained the remains of 1 individual. The primary individual was face up with the head to the west facing east. No grave goods were recovered for burial lot #9025.

Burial lot #9026 was located in Area N with the coordinates in the NW corner of the coffin N236'5" E158'8". The elevation at the base of the coffin in the NW corner was 726.26 famsl. The 6 sided sub-adult coffin (25" x 8") contained the remains of 1 individual. The position of the primary individual was indeterminate due to the deterioration of skeletal elements. The following grave goods were recovered for burial lot #9026: safety pins.

Burial lot #9027 was located in Area N with the coordinates in the NW corner of the coffin N235'8" E155'3". The elevation at the base of the coffin in the NW corner was 726.08 famsl. The 4 sided sub-adult coffin (24" x 8") contained the remains of 1 individual. The position of the primary individual was indeterminate with the head to the west facing east. The following grave good was recovered for burial lot #9027: a safety pin.

Burial lot #9028 was located in Area N with the coordinates in the NW corner of the burial pit stain N233'4" E155'3". The elevation at the NW datum was 726.213 famsl. The burial was completely disturbed. No skeletal elements, grave goods, coffin hardware, or coffin wood remained.

Burial lot #9029 was located in Area N with the coordinates in the NW corner of the burial pit stain N230'10" E155'4". The elevation at the NW datum was 726.213 famsl. The burial was completely disturbed. No skeletal elements, grave goods, coffin hardware, or coffin wood remained.

Burial lot #9030 was located in Area N with the coordinates in the NW corner of the coffin N228'4" E154'3". The elevation at the base of the estimated position of the coffin in the NW corner was 726.43 famsl. The shape and dimensions of the sub-adult coffin was indeterminate due to disturbance and coffin wood decay. It contained the remains of 1 individual. The position of the primary individual was indeterminate due to the disturbance and consistency of the soil. The following grave goods were recovered for burial lot #9030: safety pins.

Burial lot #9031 was located in Area N with the coordinates of the NW datum N233'9" E149'0". The elevation at the NW datum was 726.723 famsl. The burial was completely disturbed. No burial pit stain, skeletal elements, grave goods, coffin hardware, or coffin wood remained.

Burial lot #9032 was located in Area N with the coordinates in the NW corner of the burial pit stain N235'9" E149'1". The elevation at the NW datum was 726.843 famsl. The burial was completely disturbed. No skeletal elements, grave goods, coffin hardware, or coffin wood remained.

Burial lot #9033 was located in Area N with the coordinates in the NW corner of the coffin N255'0" E168'4". The elevation at the base of the coffin in the NW corner was 724.62 famsl. The dimensions of the 4 sided sub-adult coffin was indeterminate due to disturbance and coffin wood decay. No skeletal elements, grave goods, or coffin wood remained.

Burial lot #9034 was located in Area N with the coordinates in the NW corner of the burial stain N258'3" E168'3". The elevation at the base of the excavated stain in the NW corner was 724.38 famsl. The burial was completely disturbed. No skeletal elements, grave goods, coffin hardware, or coffin wood remained.

Burial lot #9035 was located in Area N with the coordinates in the NW corner of the coffin N262'9" E168'6". The elevation at the base of the coffin in the NW corner was 724.11 famsl. The 6 sided sub-adult coffin (32" x 9") contained the remains of 1 individual. The position of the primary individual was indeterminate with the head to the west facing east. The following grave goods were recovered for burial lot #9035: a safety pin and buttons.

Burial lot #9036 was located in Area N with the coordinates in the NW corner of the coffin N265'7" E169'1". The elevation at the base of the coffin in the NW corner was 724.46 famsl. The 4 sided sub-adult coffin (16" x 8") contained the remains of 1 individual. The primary individual was lying on its left side with the head to the west facing east. No grave goods were recovered for burial lot #9036.

Burial lot #9037 was located in Area N with the coordinates in the NW corner of the coffin N268'4" E171'5". The elevation at the base of the coffin in the NW corner was 724.40 famsl. The no skeletal elements remained in the 4 sided sub-adult coffin (22" x 7"). No grave goods were recovered for burial lot #9037.

Burial lot #9038 was located in Area N with the coordinates in the NW corner of the burial pit stain N270'10" E168'0". The elevation at the base of the excavated stain in the NW corner was 723.90 famsl. The burial was completely disturbed. No skeletal elements, grave goods, coffin hardware, or coffin wood remained.

Burial lot #9039 was located in Area N with the coordinates in the NW corner of the coffin N255'6" E163'5". The elevation at the base of the coffin in the NW corner was 724.65 famsl. The 4 sided sub-adult coffin (28" x 6") contained the remains of 1 individual. The primary individual was face up with the head to the west facing east. The following grave good was recovered for burial lot #9039: a safety pin.

Burial lot #9040 was located in Area N with the coordinates in the NW corner of the coffin N257'8" E163'5". The elevation at the base of the coffin in the NW corner was 724.47 famsl. The 4 sided sub-adult coffin (23" x 7") contained the remains of 1 individual. The position of the primary individual was indeterminate. No grave goods were recovered for burial lot #9040.

Burial lot #9041 was located in Area N with the coordinates in the NW corner of the coffin N260'2" E163'6". The elevation at the base of the coffin in the NW corner was 724.55 famsl. The 4 sided sub-adult coffin (22" x 8") contained the remains of 1 individual. The primary individual was face up with the head to the east facing west. No grave goods were recovered for burial lot #9041.

Burial lot #9042 was located in Area N with the coordinates in the NW corner of the coffin N265'3" E164'0". The elevation at the base of the coffin in the NW corner was 723.39 famsl. The shape and dimensions of the coffin was indeterminate due to trench disturbance. It contained the partial remains of 1 individual. The primary individual was face up with the head to the west facing east. The following grave good was recovered for burial lot #9042: a safety pin.

Burial lot #9043 was located in Area N with the coordinates in the NW corner of the coffin N267'9" E163'4". The elevation at the base of the coffin in the NW corner was 724.38 famsl. The 4 sided sub-adult coffin (37" x 8") contained the remains of 1 individual. The primary individual was face up with the head to the west facing east. No grave goods were recovered for burial lot #9043.

Burial lot #9044 was located in Area N with the coordinates in the NW corner of the coffin N270'5" E163'0". The elevation at the base of the coffin in the NW corner was 724.40 famsl. The 4 sided sub-adult coffin (33" x 9") contained the remains of 1 individual. The position of the primary individual was indeterminate with the head to the west facing east. The following grave goods were recovered for burial lot #9044: cloth, safety pins, and a button.

Burial lot #9045 was located in Area N with the coordinates in the NW corner of the coffin N273'0" E163'0". The elevation at the base of the coffin in the NW corner was 724.21 famsl. The 6 sided sub-adult coffin (32.5" x 9.5") contained the remains of 1 individual. The position of the primary individual was indeterminate with the head to the west facing east. No grave goods were recovered for burial lot #9045.

Burial lot #9046 was located in Area N with the coordinates in the NW corner of the coffin N275'5" E163'3". The elevation at the base of the coffin in the NW corner was 724.16 famsl. The 4 sided sub-adult coffin (26" x 8.5") contained the remains of 1 individual. The position of the primary individual was indeterminate with the head to the west facing east. No grave goods were recovered for burial lot #9046.

Burial lot #9047 was located in Area N with the coordinates in the NW corner of the coffin N278'2" E164'9". The elevation at the base of the coffin in the NW corner was 724.16 famsl. The shape and dimensions of the coffin was indeterminate due to disturbance. It contained the remains of 1 individual. The primary individual was face up with the head to the west facing east. The following grave good was recovered for burial lot #9047: a safety pin.

Burial lot #9048 was located in Area N with the coordinates in the NW corner of the coffin N281'0" E165'0". The elevation at the base of the coffin in the NW corner was 724.40 famsl. The shape and dimensions of the coffin was indeterminate due to disturbance. The lot contained very few skeletal elements. Grave goods, coffin wood and hardware were not recovered.

Burial lot #9049 was located in Area N with the coordinates in the NW corner of the coffin N238'9" E163'8". The elevation at the base of the coffin in the NW corner was 724.39 famsl. The 4 sided sub-adult coffin (26" x 7") contained the remains of 1 individual. The position of the primary individual was indeterminate due to poor soil conditions. The following grave good was recovered for burial lot #9040: a historic ceramic rim fragment.

Burial lot #9050 was located in Area N with the coordinates in the NW corner of the coffin N280'4" E158'2". The elevation at the base of the coffin in the NW corner was 742.61 famsl. No skeletal elements were recovered from the 4 sided sub-adult coffin (23" x 6"). No grave goods were recovered for burial lot #9050.

Burial lot #9051 was located in Area N with the coordinates in the NW corner of the coffin N278'2" E158'2". The elevation at the base of the coffin in the NW corner was 724.75 famsl. The shape and length of the sub-adult coffin (width 8") was indeterminate due to disturbance. It contained the remains of 1 individual. The position of the primary individual was indeterminate due to the disturbance. The following grave good was recovered for burial lot #9051: paper fragments.

Burial lot #9052 was located in Area N with the coordinates in the NW corner of the burial pit stain N275'0" E158'6". The elevation at the base of the excavated stain in the NW corner was 724.61 famsl. The burial was completely disturbed. No skeletal elements, grave goods, coffin hardware, or coffin wood remained.

Burial lot #9053 was located in Area N with the coordinates in the NW corner of the burial pit stain N273'2" E158'5". The elevation at the base of the excavated stain in the NW corner was 724.61 famsl. The burial was completely disturbed. No skeletal elements, grave goods, coffin hardware, or coffin wood remained.

Burial lot #9054 was located in Area N with the coordinates in the NW corner of the coffin N270'5" E159'0". The elevation at the base of the coffin in the NW corner was 724.52 famsl. The shape of the sub-adult coffin (26" x 8") was indeterminate due to coffin wood decay. It contained the remains of 1 individual. The position of the primary individual was indeterminate with the head to the west facing east. No grave goods were recovered for burial lot #9054.

Burial lot #9055 was located in Area N with the coordinates in the NW corner of the coffin N268'0" E160'0". The elevation at the base of the coffin in the NW corner was 724.24 famsl. The shape and dimensions of the coffin was indeterminate due to trench disturbance. No skeletal elements, grave goods, or coffin wood recovered.

Burial lot #9056 was located in Area N with the coordinates in the NW corner of the burial pit stain N263'4" E158'2". The elevation at the NW datum was 724.973 famsl. The burial was completely disturbed. No skeletal elements, grave goods, coffin hardware, or coffin wood remained.

Burial lot #9057 was located in Area N with the coordinates in the NW corner of the coffin N260'4" E159'0". The elevation at the base of the coffin in the NW corner was 724.54 famsl. The 4 sided sub-adult coffin (22" x 7") contained the remains of 1 individual. The primary individual was face up with the head to the west facing east. No grave goods were recovered for burial lot #9057.

Burial lot #9058 was located in Area N with the coordinates in the NW corner of the coffin N258'2" E158'8". The elevation at the base of the coffin in the NW corner was 724.94 famsl. The 4 sided sub-adult coffin (25" x 6") contained the remains of 1 individual. The position of the primary individual was indeterminate with the head to the west facing east. The following grave goods were recovered for burial lot #9058: buttons.

Burial lot #9059 was located in Area N with the coordinates in the NW corner of the coffin N255'11" E160'1". The elevation at the base of the coffin in the NW corner was 724.82 famsl. The shape and dimensions of the coffin were indeterminate due to disturbance. The lot contained the remains of 1 individual. The position of the primary individual was indeterminate with the head to the west facing east. The following grave good was recovered for burial lot #9059: a safety pin.

Burial lot #9060 was located in Area N with the coordinates in the NW corner of the coffin N255'6" E154'5". The elevation at the base of the coffin in the NW corner was 724.80 famsl. The 4 sided sub-adult coffin (31" x 9") contained the remains of 1 individual. The position of the primary individual was indeterminate with the head to the west facing east. No grave goods were recovered for burial lot #9060.

Burial lot #9061 was located in Area N with the coordinates in the NW corner of the coffin N258'3" E153'3". The elevation at the base of the coffin in the NW corner was 724.80 famsl. The 6 sided sub-adult coffin (32" x 10") contained the remains of 1 individual. The position of the primary individual was indeterminate with the head to the west facing east. No grave goods were recovered for burial lot #9061.

Burial lot #9062 was located in Area N with the coordinates in the NW corner of the coffin N266'2" E154'4". The elevation at the base of the coffin in the NW corner was 724.94 famsl. The shape of the sub-adult coffin (27" x 7") was indeterminate due to coffin wood decay. It contained the remains of 1 individual. The primary individual was face up with the head to the west facing east. The following grave goods were recovered for burial lot #9062: safety pins.

Burial lot #9063 was located in Area N with the coordinates in the NW corner of the coffin N263'7" E154'5". The elevation at the base of the coffin in the NW corner was 724.66 famsl. The 6 sided sub-adult coffin (25" x 8") contained the remains of 1 individual. The position of the primary individual was indeterminate due to soil conditions. No grave goods were recovered for burial lot #9063.

Burial lot #9064 was located in Area N with the coordinates in the NW corner of the coffin N265'8" E153'10". The elevation at the base of the coffin in the NW corner was 724.77 famsl. The 4 sided sub-adult coffin (24" x 7") contained the remains of 1 individual. The position of the primary individual was indeterminate with the head to the west facing east. No grave goods were recovered for burial lot #9064.

Burial lot #9065 was located in Area N with the coordinates in the NW corner of the coffin N272'8" E154'6". The elevation at the base of the coffin in the NW corner was 724.80 famsl. There were no skeletal remains or grave goods in the 4 sided sub-adult coffin (27" x 8").

Burial lot #9066 was located in area N with the coordinates in the NW corner of the coffin N275'8" E154'5". The elevation at the base of the coffin in the NW corner was 725.303 famsl. The indeterminately sided sub-adult coffin (25" x 6") contained the remains of 1 individual. The primary individual was face up with the head to the west facing east. The following grave goods for lot #9066 were recovered: 1 safety pin.

Burial lot #9067 was located in area N with the coordinates in the NW corner of the coffin N277'9" E154'6". The elevation at the base of the coffin in the NW corner was 725.363 famsl. The indeterminately sided sub-adult coffin (21" x 9") contained the remains of 1 individual. The primary individual was placed indeterminately in the coffin with the head to the west facing east. There were no grave goods recovered for lot #9067.

Burial lot #9068 was located in area N with the coordinates in the NW corner of the coffin N280'5" E154'2". The elevation at the base of the coffin in the NW corner was 725.473 famsl. The 4 sided sub-adult coffin (25" x 8") contained the remains of 1 individual. The primary individual was face down with the head to the east facing west. Another skeleton was found face down in the coffin (lot #9404) The following grave goods for lot #9068 were recovered: 1 jar.

Burial lot #9069 was located in area N with the coordinates in the NW corner of the coffin N287'2" E148'3". The elevation at the base of the coffin in the NW corner was 725.733 famsl. The indeterminately sided sub-adult coffin (32" x 9.5") contained the remains of 1 individual. The primary individual was face up with the head to the west facing east. The following grave goods for lot #9069 were recovered: 1 safety pin, 4 buttons.

Burial lot #9070 was located in area N with the coordinates in the NW corner of the coffin N284'2" E148'3". The elevation at the base of the coffin in the NW corner was 725.713 famsl. The 4 sided sub-adult coffin (27" x 8") contained the remains of 1 individual. The primary individual was placed indeterminately in the coffin. There were no grave goods recovered for lot #9070.

Burial lot #9071 was located in area N with the coordinates in the NW corner of the coffin N282' E148'3". The elevation at the base of the coffin in the NW corner was 725.913 famsl. The indeterminately sided sub-adult coffin (26" x 7.5") contained the remains of 1 individual. The primary individual was face up with the head to the west facing east. There were no grave goods recovered for lot #9071.

Burial lot #9072 was located in area N with the coordinates in the NW corner of the coffin N280'1" E148'9". The elevation at the base of the coffin in the NW corner was 725.873 famsl. The 4 sided sub-adult coffin (25" x 8") contained the remains of 1 individual. The primary individual was placed indeterminately with the head to the west facing east. There were no grave goods recovered for lot #9072.

Burial lot #9073 was located in area N with the coordinates in the NW corner of the coffin N277'7" E148'10". The elevation at the base of the coffin in the NW corner was 725.833 famsl. The 4 sided sub-adult coffin (24" x 9") contained the remains of 1 individual. The primary individual was face up with the head to the west facing east. The following grave goods for lot #9073 were recovered: 1 safety pin.

Burial lot #9074 was located in area N with the coordinates in the NW corner of the coffin N275'4" E148'9". The elevation at the base of the coffin in the NW corner was 725.833 famsl. The 4 sided sub-adult coffin (25" x 7") contained the remains of 1 individual. The primary individual was face up with the head to the west facing east. There were no grave goods recovered for lot #9074.

Burial lot #9075 was located in area N with the coordinates in the NW corner of the coffin N268'3" E149'4". The elevation at the base of the coffin in the NW corner was 725.633 famsl. The indeterminately sided sub-adult coffin (25" x 8") contained the remains of 1 individual. The primary individual was placed indeterminately in the coffin. There were no grave goods recovered for lot #9075.

Burial lot #9076 was located in area N with the coordinates in the NW corner of the coffin N266'2" E149'4". The elevation at the base of the coffin in the NW corner was 725.663 famsl. The 4 sided sub-adult coffin (25" x 7") contained the remains of 1 individual. The primary individual was placed indeterminately in the coffin. There were no grave goods recovered for lot #9076.

Burial lot #9077 was located in area N with the coordinates in the NW corner of the coffin N263'8" E148'10". The elevation at the base of the coffin in the NW corner was 725.843 famsl. The 4 sided sub-adult coffin (25" x 8") contained the remains of 1 individual. The primary individual was placed indeterminately in the coffin. There were no grave goods recovered for lot #9077.

Burial lot #9078 was located in area N with the coordinates in the NW corner of the coffin N261'6" E149'2". The elevation at the base of the coffin in the NW corner was 725.923 famsl. The 4 sided sub-adult coffin (23" x 7") contained the remains of 1 individual. The primary individual was placed indeterminately in the coffin with the head to the west facing east. There were no grave goods recovered for lot #9078.

Burial lot #9079 was located in area N with the coordinates in the NW corner of the coffin N259'2" E148'10". The elevation at the base of the coffin in the NW corner was 726.063 famsl. The 4 sided sub-adult coffin (26" x 8") contained the remains of 1 individual. The primary individual was placed indeterminately in the coffin with the head to the west facing east. There were no grave goods recovered for lot #9079.

Burial lot #9080 was located in area N with the coordinates in the NW corner of the coffin N256'10" E149'. The elevation at the base of the coffin in the NW corner was 726.023 famsl. The 4 sided sub-adult coffin (20" x 8") contained the remains of 1 individual. The primary individual was placed indeterminately in the coffin with the head to the west facing east. The following grave goods for lot #9080 were recovered: 5 safety pins.

Burial lot #9081 was located in area N with the coordinates in the NW corner of the coffin N254'8" E148'4". The elevation at the base of the coffin in the NW corner was 725.973 famsl. The 4 sided sub-adult coffin (20" x 10") contained the remains of 1 individual. The primary individual was placed indeterminately in the coffin with the head to the west facing east. The following grave goods for lot #**** were recovered: 3 buttons.

Burial lot #9082 was located in area N with the coordinates in the NW corner of the coffin N255'1" E144'9". The elevation at the base of the coffin in the NW corner was 726.603 famsl. The 6 sided sub-adult coffin (28" x 9") contained the remains of 1 individual. The primary individual was face up with the head to the west facing east. The following grave goods for lot #9082 were recovered: 3 safety pins, 10 buttons.

Burial lot #9083 was located in area N with the coordinates in the NW corner of the coffin N257'6" E144'9". The elevation at the base of the coffin in the NW corner was 726.793 famsl. The 4 sided sub-adult coffin (24" x 8") contained the remains of 1 individual. The primary individual was face up with the head to the west facing east. The following grave goods for lot #9083 were recovered: 3 buttons, 1 pin.

Burial lot #9084 was located in area N with the coordinates in the NW corner of the coffin N259'10" E144'7". The elevation at the base of the coffin in the NW corner was 726.943 famsl. The 4 sided sub-adult coffin (29" x 8") contained the remains of 1 individual. The primary individual was face up with the head to the west facing east. The following grave goods for lot #9084 were recovered: 4 safety pins, 2 buttons.

Burial lot #9085 was located in area N with the coordinates in the NW corner of the coffin N262'2" E144'10". The elevation at the base of the coffin in the NW corner was 726.843 famsl. The 4 sided sub-adult coffin (26" x 7") contained the remains of 1 individual. The primary individual was face up with the head to the west facing east. The following grave goods for lot #9085 were recovered: 2 buttons, 1 safety pin.

Burial lot #9086 was located in area N with the coordinates in the NW corner of the coffin N264'9" E144'10". The elevation at the base of the coffin in the NW corner was 726.823 famsl. The indeterminately sided sub-adult coffin (25" x 6") contained the remains of 1 individual. The primary individual was placed indeterminately in the coffin with the head to the west facing east. The following grave goods for lot #9086 were recovered: 1 safety pin.

Burial lot #9087 was located in area N with the coordinates in the NW corner of the coffin N267'5" E145'1". The elevation at the base of the coffin in the NW corner was 726.673 famsl. The indeterminately sided sub-adult coffin (13" x 7.5") contained the remains of 1 individual. The primary individual was placed indeterminately in the coffin with the head to the west facing east. The following grave goods for lot #9087 were recovered: 1 safety pin.

Burial lot #9088 was located in area N with the coordinates in the NW corner of the coffin N269'10" E145'2". The elevation at the base of the coffin in the NW corner was 726.353 famsl. The 4 sided sub-adult coffin (22" x 7") contained the remains of 1 individual. The primary individual was placed indeterminately in the coffin. There were no grave goods recovered for lot #9088.

Burial lot #9089 was located in area N with the coordinates in the NW corner of the coffin N272'2" E145'5". The elevation at the base of the coffin in the NW corner was 725.903 famsl. The 4 sided sub-adult coffin (22" x 7") contained the remains of 1 individual. The primary individual was placed indeterminately in the coffin. There were no grave goods recovered for lot #9089.

Burial lot #9090 was located in area N with the coordinates in the NW corner of the coffin N277'6" E145'6". The elevation at the base of the coffin in the NW corner was 726.233 famsl. The 4 sided sub-adult coffin (22" x 5") contained the remains of 1 individual. The primary individual was placed indeterminately in the coffin. There were no grave goods recovered for lot #9090.

Burial lot #9091 was located in area N with the coordinates in the NW corner of the coffin N279'4" E144'9". The elevation at the base of the coffin in the NW corner was 726.303 famsl. The 4 sided sub-adult coffin (30" x 8.5") contained the remains of 1 individual. The primary individual was placed indeterminately in the coffin with the head to the west facing east. The following grave goods for lot #9091 were recovered: 1 button.

Burial lot #9093 was located in area N with the coordinates in the NW corner of the coffin N284'10" E144'7". The elevation at the base of the coffin in the NW corner was 726.293 famsl. The 6 sided sub-adult coffin (30" x 12") contained the remains of 1 individual. The primary individual was face up with the head to the west facing east. The following grave goods for lot #9093 were recovered: buttons.

Burial lot #9094 was located in area N with the coordinates in the NW corner of the coffin N278'1" E145'1". The elevation at the base of the coffin in the NW corner was 726.293 famsl. The 4 sided sub-adult coffin (22" x 11") contained the remains of 1 individual. The primary individual was face up with the head to the west facing east. The following grave goods for lot #9094 were recovered: 2 safety pins, 2 buttons.

Burial lot #9095 was located in area N with the coordinates in the NW corner of the coffin N236'9" E141'. The elevation at the base of the coffin in the NW corner was 726.893 famsl. The 4 sided sub-adult coffin (25" x 7.5") contained the remains of 1 individual. The primary individual was face up with the head to the west facing east. There were no grave goods recovered for lot #9095.

Burial lot #9096 was located in area N with the coordinates in the NW corner of the coffin N284'2" E141'3". The elevation at the base of the coffin in the NW corner was 726.933 famsl. The 4 sided sub-adult coffin (23" x 8") contained the remains of 1 individual. The primary individual was face up with the head to the west facing east. The following grave goods for lot #9096 were recovered: 1 wooden grave marker.

Burial lot #9097 was located in area N with the coordinates in the NW corner of the coffin N281'10" E141'6". The elevation at the base of the coffin in the NW corner was 726.873 famsl. The indeterminately sided sub-adult coffin (2" x 7") contained the remains of 1 individual. The primary individual was placed indeterminately in the coffin with the head to the west facing east. The following grave goods for lot #9097 were recovered: 1 safety pin, 3 buttons.

Burial lot #9098 was located in area N with the coordinates in the NW corner of the coffin N279'1" E142'. The elevation at the base of the coffin in the NW corner was 726.833 famsl. The sub-adult coffin's type and dimensions are indeterminate due to heavy disturbance by the water trench. It contained the remains of 1 individual. The primary individual was placed indeterminately in the coffin. There were no grave goods recovered for lot #9098.

Burial lot #9099 was located in area N with the coordinates in the NW corner of the coffin N273'9" E138'6". The elevation at the base of the coffin in the NW corner was 726.633 famsl. The 6 sided sub-adult coffin (27" x 12") contained the remains of 1 individual. The primary individual was face up with the head to the west facing east. The following grave goods for lot #9099 were recovered: 1 safety pin, 2 buttons.

Burial lot #9100 was located in area N with the coordinates in the NW corner of the coffin N271'5" E142'1". The elevation at the base of the coffin in the NW corner was 726.433 famsl. The 4 sided sub-adult coffin (21" x 7") contained the remains of 1 individual. The primary individual was face up with the head to the west facing east. There were no grave goods recovered for lot #9100.

Burial lot #9101 was located in area N with the coordinates in the NW corner of the coffin N269' E141'5". The elevation at the base of the coffin in the NW corner was 727.413 famsl. The indeterminately sided sub-adult coffin (21" x 8") contained the remains of 1 individual. The primary individual was placed indeterminately in the coffin. There were no grave goods recovered for lot #9101.

Burial lot #9102 was located in area N with the coordinates in the NW corner of the coffin N265'1" E141'2". The elevation at the base of the coffin in the NW corner was 727.103 famsl. The indeterminately sided sub-adult coffin (20" x 5") contained the remains of 1 individual. The primary individual was placed indeterminately in the coffin. There were no grave goods recovered for lot #9102.

Burial lot #9103 was located in area N with the coordinates in the NW corner of the coffin N263'4" E141'0". The elevation at the base of the coffin in the NW corner was 727.153 famsl. The 4 sided sub-adult coffin (22.5" x 7.5") contained the remains of 1 individual. The primary individual was face up with the head to the west facing east. There were no grave goods recovered for lot #9103.

Burial lot #9104 was located in area N with the coordinates in the NW corner of the coffin N261' E140'11". The elevation at the base of the coffin in the NW corner was 727.053 famsl. The 4 sided sub-adult coffin (22" x 7") contained the remains of 1 individual. The primary individual was face up with the head to the west facing east. The following grave goods for lot #9104 were recovered: 5 buttons.

Burial lot #9105 was located in area N with the coordinates in the NW corner of the coffin N258'9" E140'11". The elevation at the base of the coffin in the NW corner was 727.023 famsl. The 4 sided sub-adult coffin (26" x 7") contained the remains of 1 individual. The primary individual was placed indeterminately in the coffin with the head to the west facing east. The following grave goods for lot #9105 were recovered: 1 button.

Burial lot #9106 was located in area N with the coordinates in the NW corner of the coffin N255'9" E140'6". The elevation at the base of the coffin in the NW corner was 726.993 famsl. The 6 sided sub-adult coffin (29" x 9") contained the remains of 1 individual. The primary individual was placed indeterminately in the coffin with the head to the west facing east. The following grave goods for lot #9106 were recovered: 3 buttons.

Burial lot #9108 was located in area N with the coordinates in the NW corner of the coffin N256' E136'7". The elevation at the base of the coffin in the NW corner was 727.493 famsl. The 4 sided sub-adult coffin (19" x 9") contained the remains of 1 individual. The primary individual was placed indeterminately in the coffin with the head to the west facing east. There were no grave goods recovered for lot #9108.

Burial lot #9109 was located in area N with the coordinates in the NW corner of the coffin N258'8" E136'9". The elevation at the base of the coffin in the NW corner was 727.573 famsl. The 4 sided sub-adult coffin (? x 12") contained the remains of 1 individual. The primary individual was placed indeterminately in the coffin with the head to the west facing east. The following grave goods for lot #9109 were recovered: 1 safety pin, 2 buttons.

Burial lot #9110 was located in area N with the coordinates in the NW corner of the coffin N261'1" E143'. The elevation at the base of the coffin in the NW corner was 727.523 famsl. The 4 sided sub-adult coffin (20" x 8") contained the remains of 1 individual. The primary individual was face up with the head to the west facing east. There were no grave goods recovered for lot #9110.

Burial lot #9111 was located in area N with the coordinates in the NW corner of the coffin N264' E142'9". The elevation at the base of the coffin in the NW corner was 727.353 famsl. The indeterminately sided sub-adult coffin (20" x 8.5") contained the remains of 1 individual. The primary individual was face up with the head to the west facing east. The following grave goods for lot #9111 were recovered: safety pins.

Burial lot #9112 was located in area N with the coordinates in the NW corner of the coffin N266'6" E137'5". The elevation at the base of the coffin in the NW corner was 727.343 famsl. The indeterminately sided sub-adult coffin (19" x 8") contained the remains of 1 individual. The primary individual was face up with the head to the west facing east. There were no grave goods recovered for lot #9112.

Burial lot #9113 was located in area N with the coordinates in the NW corner of the coffin N261' E137'8". The elevation at the base of the coffin in the NW corner was 727.513 famsl. The 6 sided sub-adult coffin (20" x 9") contained the remains of 1 individual. The primary individual was face up with the head to the west facing east. There were no grave goods recovered for lot #9113.

Burial lot #9114 was located in area N with the coordinates in the NW corner of the coffin N271'9" E137'7". The elevation at the base of the coffin in the NW corner was 727.393 famsl. The indeterminately sided sub-adult coffin (20" x 7.5") contained the remains of 1 individual. The primary individual was face up with the head to the west facing east. The following grave goods for lot #9114 were recovered: 3 buttons.

Burial lot #9115 was located in area N with the coordinates in the NW corner of the coffin N274'2" E137'7". The elevation at the base of the coffin in the NW corner was 726.963 famsl. The 6 sided sub-adult coffin (26" x 10") contained the remains of 1 individual. The primary individual was face up with the head to the west facing east. The following grave goods for lot #9115 were recovered: 2 buttons.

Burial lot #9116 was located in area N with the coordinates in the NW corner of the coffin N276' E137'8". The elevation at the base of the coffin in the NW corner was 727.083 famsl. The 6 sided sub-adult coffin (? x 12") contained the remains of 1 individual. The primary individual was face up with the head to the west facing east. The following grave goods for lot #9116 were recovered: 2 buttons.

Burial lot #9117 was located in area N with the coordinates in the NW corner of the coffin N283' E138'1". The elevation at the base of the coffin in the NW corner was 727.403 famsl. The burial was completely disturbed by the sewer trench leaving no coffin or remains. There were no grave goods recovered for lot #9117.

Burial lot #9118 was located in area N with the coordinates in the NW corner of the coffin N288' E137'4". The elevation at the base of the coffin in the NW corner was 727.483 famsl. The indeterminately sided sub-adult coffin (21" x 7") contained the remains of 1 individual. The primary individual was placed indeterminately in the coffin. There were no grave goods recovered for lot #9118.

Burial lot #9119 was located in area N with the coordinates in the NW corner of the coffin N287'1" E137'3". The elevation at the base of the coffin in the NW corner was 272.413 famsl. The 4 sided sub-adult coffin (26" x 8") contained the remains of 1 individual. The primary individual was face up with the head to the west facing east. The following grave goods for lot #9119 were recovered: 5 safety pins, cloth, 6 buttons.

Burial lot #9120 was located in area N with the coordinates in the NW corner of the coffin N292'3" E133'6". The elevation at the base of the coffin in the NW corner was 727.333 famsl. The sub-adult coffin's type and dimensions are indeterminate due to deterioration. It contained the remains of 1 individual. The primary individual was face up with the head to the west facing east. The following grave goods for lot #9120 were recovered: 1 safety pin, cloth, glass, plastic, cross, paper.

Burial lot #9121 was located in area N with the coordinates in the NW corner of the coffin N287'9" E133'3". The elevation at the base of the coffin in the NW corner was 727.363 famsl. The sub-adult coffin's type and dimensions are indeterminate. It contained the remains of 1 individual. The primary individual was face up with the head to the west facing east. The following grave goods for lot #9121 were recovered: 1 button.

Burial lot #9122 was located in area N with the coordinates in the NW corner of the coffin N285'3" E133'5". The elevation at the base of the coffin in the NW corner was 727.303 famsl. The sub-adult coffin's type and dimensions are indeterminate. It contained the remains of 1 individual. The primary individual was placed indeterminately in the coffin. The following grave goods for lot #9122 were recovered: 26 beads.

Burial lot #9125 was located in area N with the coordinates in the NW corner of the coffin N276'1" E133'11". The elevation at the base of the coffin in the NW corner was 727.463 famsl. The indeterminately sided sub-adult coffin (? x 9") contained the remains of 1 individual. The primary individual was face up with the head to the west facing east. The following grave goods for lot #9125 were recovered: 1 tack.

Burial lot #9126 was located in area N with the coordinates in the NW corner of the coffin N273'9" E134'1". The elevation at the base of the coffin in the NW corner was 727.413 famsl. The sub-adult coffin's type and dimensions are indeterminate contained the remains of 1 individual. The primary individual was placed indeterminately in the coffin. The following grave goods for lot #9126 were recovered: 2 safety pins, wax cylinder.

Burial lot #9127 was located in area N with the coordinates in the NW corner of the coffin N275'2" E133'7". The elevation at the base of the coffin in the NW corner was 727.793 famsl. The indeterminately sided sub-adult coffin (18" x 8") contained the remains of 1 individual. The primary individual was placed indeterminately in the coffin with the head to the west facing east. The following grave goods for lot #9127 were recovered: 3 safety pins.

Burial lot #9128 was located in area N with the coordinates in the NW corner of the coffin N268'11" E133'10". The elevation at the base of the coffin in the NW corner was 727.803 famsl. The indeterminately sided sub-adult coffin (19.5" x 9.5") contained the remains of 1 individual. The primary individual was placed indeterminately in the coffin with the head to the west facing east. The following grave goods for lot #9128 were recovered: 1 button.

Burial lot #9129 was located in area N with the coordinates in the NW corner of the coffin N266'6" E134'3". The elevation at the base of the coffin in the NW corner was 727.613 famsl. The 4 sided sub-adult coffin (18" x 6") contained the remains of 1 individual. The primary individual was placed indeterminately in the coffin with the head to the west facing east. The following grave goods for lot #9129 were recovered: 5 tacks.

Burial lot #9130 was located in area N with the coordinates in the NW corner of the coffin N264'3" E134'2". The elevation at the base of the coffin in the NW corner was 727.683 famsl. The sub-adult coffin's type and dimensions are indeterminate. It contained the remains of 1 individual. The primary individual was placed indeterminately in the coffin. There were no grave goods recovered for lot #9130.

Burial lot #9131 was located in area N with the coordinates in the NW corner of the coffin N262'1" E133'7". The elevation at the base of the coffin in the NW corner was 727.793 famsl. The 4 sided sub-adult coffin (19" x 7.5") contained the remains of 1 individual. The primary individual was face up with the head to the west facing east. The following grave goods for lot #9131 were recovered: 1 safety pin.

Burial lot #9132 was located in area N with the coordinates in the NW corner of the coffin N259'7" E133'6". The elevation at the base of the coffin in the NW corner was 727.913 famsl. The 4 sided sub-adult coffin (21.5" x 6.75") contained the remains of 1 individual. The primary individual was placed indeterminately in the coffin. There were no grave goods recovered for lot #9132.

Burial lot #9135 was located in area N with the coordinates in the NW corner of the coffin N256'5" E129'5". The elevation at the base of the coffin in the NW corner was 727.993 famsl. The sub-adult coffin's type and dimensions are indeterminate due to heavy disturbance. It contained the remains of 1 individual. The primary individual was face up with the head to the west facing east. There were no grave goods recovered for lot #9135.

Burial lot #9137 was located in area N with the coordinates in the NW corner of the coffin N260'9" E129'9". The elevation at the base of the coffin in the NW corner was 727.933 famsl. The sub-adult coffin's type and dimensions are indeterminate. It contained the remains of 1 individual. The primary individual was placed indeterminately in the coffin. There were no grave goods recovered for lot #9137.

Burial lot #9138 was located in area N with the coordinates in the NW corner of the coffin N262'11" E130'3". The elevation at the base of the coffin in the NW corner was 727.953 famsl. The sub-adult coffin's type and dimensions are indeterminate. It contained the remains of 1 individual. The primary individual was face up with the head to the west facing east. There were no grave goods recovered for lot #9138.

Burial lot #9139 was located in area N with the coordinates in the NW corner of the coffin N265'1" E130'5". The elevation at the base of the coffin in the NW corner was 727.983 famsl. The indeterminately sided sub-adult coffin (? " x 7") contained the remains of 1 individual. The primary individual was placed indeterminately in the coffin with the head to the west facing east. There were no grave goods recovered for lot #9139.

Burial lot #9140 was located in area N with the coordinates in the NW corner of the coffin N267'5" E130'5". The elevation at the base of the coffin in the NW corner was 727.863 famsl. The indeterminately sided sub-adult coffin (7" x 8") contained the remains of 1 individual. The primary individual was face up with the head to the west facing east. The following grave goods for lot #9140 were recovered: 1 safety pin, 1 button.

Burial lot #9141 was located in area N with the coordinates in the NW corner of the coffin N269'8" E130'2". The elevation at the base of the coffin in the NW corner was 728.113 famsl. The 4 sided sub-adult coffin (27" x 8") contained the remains of 1 individual. The primary individual was face up with the head to the west facing east. The following grave goods for lot #**** were recovered: 2 safety pins.

Burial lot #9142 was located in area N with the coordinates in the NW corner of the coffin N271'7" E130'7". The elevation at the base of the coffin in the NW corner was 727.733 famsl. The indeterminately sided sub-adult coffin (20" x 8") contained the remains of 1 individual. The primary individual was placed indeterminately in the coffin. There were no grave goods recovered for lot #9142.

Burial lot #9143 was located in area N with the coordinates in the NW corner of the coffin N273'8" E130'2". The elevation at the base of the coffin in the NW corner was 727.773 famsl. The 4 sided sub-adult coffin (25.5" x 8.5") contained the remains of 1 individual. The primary individual was placed indeterminately in the coffin. The following grave goods for lot #9143 were recovered: 5 buttons, 1 safety pin.

Burial lot #9144 was located in area N with the coordinates in the NW corner of the coffin N275'11" E130'4". The elevation at the base of the coffin in the NW corner was 727.943 famsl. The indeterminately sided sub-adult coffin (27.5" x 12") contained the remains of 1 individual. The primary individual was placed indeterminately in the coffin. There were no grave goods recovered for lot #9144.

Burial lot #9146 was located in area N with the coordinates in the NW corner of the coffin N289'4" E126'7". The elevation at the base of the coffin in the NW corner was 727.603 famsl. The 4 sided sub-adult coffin (20" x 8") contained the remains of 1 individual. The primary individual was face up with the head to the east facing west. The following grave goods for lot #9146 were recovered: shells.

Burial lot #9147 was located in area N with the coordinates in the NW corner of the coffin N282' E126'7". The elevation at the base of the coffin in the NW corner was 727.523 famsl. The indeterminately sided sub-adult coffin (22" x 7") contained the remains of 1 individual. The primary individual was face up with the head to the west facing east. There were no grave goods recovered for lot #9147.

Burial lot #9148 was located in area N with the coordinates in the NW corner of the coffin N279'2" E126'7". The elevation at the base of the coffin in the NW corner was 727.683 famsl. The 4 sided sub-adult coffin (23" x 7.5") contained the remains of 1 individual. The primary individual was face up with the head to the west facing east. The following grave goods for lot #9148 were recovered: charred wood.

Burial lot #9149 was located in area N with the coordinates in the NW corner of the coffin N275'9" E127'4". The elevation at the base of the coffin in the NW corner was 727.983 famsl. The 4 sided sub-adult coffin (27" x 6") contained the remains of 1 individual. The primary individual was face up with the head to the west facing east. The following grave goods for lot #9149 were recovered: cloth, buttons.

Burial lot #9150 was located in area N with the coordinates in the NW corner of the coffin N272'11" E126'8". The elevation at the base of the coffin in the NW corner was 728.003 famsl. The 4 sided sub-adult coffin (25" x 6") contained the remains of 1 individual. The primary individual was face up with the head to the west facing east. The following grave goods for lot #9150 were recovered: 1 safety pin, fossil.

Burial lot #9151 was located in area N with the coordinates in the NW corner of the coffin N270'4" E126'7". The elevation at the base of the coffin in the NW corner was 727.963 famsl. The sub-adult coffin's type and dimensions are indeterminate. It contained the remains of 1 individual. The primary individual was positioned indeterminately in the coffin. There were no grave goods recovered for lot #9151.

Burial lot #9152 was located in area N with the coordinates in the NW corner of the coffin n267'4" E126'9". The elevation at the base of the coffin in the NW corner was 728.363 famsl. The 4 sided sub-adult coffin (24" x 7.5") contained the remains of 1 individual. The primary individual was placed indeterminately in the coffin. There were no grave goods recovered for lot #9152.

Burial lot #9153 was located in area N with the coordinates in the NW corner of the coffin N264'5" E126'7". The elevation at the base of the coffin in the NW corner was 728.263 famsl. The 4 sided sub-adult coffin (22" x 6") contained the remains of 1 individual. The primary individual was placed indeterminately in the coffin with the head to the west facing east. There were no grave goods recovered for lot #9153.

Burial lot #9154 was located in area N with the coordinates in the NW corner of the coffin N261'11" E126'1". The elevation at the base of the coffin in the NW corner was 728.203 famsl. The sub-adult coffin's type and dimensions are indeterminate due to heavy disturbance by a cable trench. It contained the remains of 1 individual. The primary individual was placed indeterminately in the coffin. There were no grave goods recovered for lot #9154.

Burial lot #9155 was located in area N with the coordinates in the NW corner of the coffin N258'7" E126'7". The elevation at the base of the coffin in the NW corner was 728.233 famsl. The 4 sided sub-adult coffin (36" x 6") contained the remains of 1 individual. The primary individual was placed indeterminately in the coffin with the head to the west facing east. The following grave goods for lot #9155 were recovered: paper(?).

Burial lot #9156 was located in area N with the coordinates in the NW corner of the coffin N255'6" E126'11". The elevation at the base of the coffin in the NW corner was 728.203 famsl. The 4 sided sub-adult coffin (22" x 8") contained the remains of 1 individual. The primary individual was placed indeterminately in the coffin with the head to the west facing east. There were no grave goods recovered for lot #9156.

Burial lot #9157 was located in area N with the coordinates in the NW corner of the coffin N252'6" E126'9". The elevation at the base of the coffin in the NW corner was 728.073 famsl. The 4 sided sub-adult coffin (21" x 8") contained the remains of 1 individual. The primary individual was placed indeterminately in the coffin. There were no grave goods recovered for lot #9157.

Burial lot #9158 was located in area N with the coordinates in the NW corner of the coffin N254'9" E122'6". The elevation at the base of the coffin in the NW corner was 729.013 famsl. The 4 sided sub-adult coffin (20" x 8") contained the remains of 1 individual. The primary individual was placed indeterminately in the coffin. The following grave goods for lot #9158 were recovered: 1 safety pin.

Burial lot #9159 was located in area N with the coordinates in the NW corner of the coffin N257'6" E121'6". The elevation at the base of the coffin in the NW corner was 728.983 famsl. The 4 sided sub-adult coffin (23" x 9") contained the remains of 1 individual. The primary individual was placed indeterminately in the coffin with the head to the west facing east. There were no grave goods recovered for lot #9159.

Burial lot #9160 was located in area N with the coordinates in the NW corner of the coffin N260'10" E111'5". The elevation at the base of the coffin in the NW corner was 728.853 famsl. The sub-adult coffin's type and dimensions are indeterminate. It contained the remains of 1 individual. The primary individual was placed indeterminately in the coffin. There were no grave goods recovered for lot #9160.

Burial lot #9161 was located in area N with the coordinates in the NW corner of the coffin N262'2" E121'9". The elevation at the base of the coffin in the NW corner was 728.763 famsl. The 4 sided sub-adult coffin (38" x 17") contained the remains of 1 individual. The primary individual was placed indeterminately in the coffin. There were no grave goods recovered for lot #9161.

Burial lot #9162 was located in area N with the coordinates in the NW corner of the coffin N264'1" E122'2". The elevation at the base of the coffin in the NW corner was 728.743 famsl. The 6 sided sub-adult coffin (25" x 10") contained the remains of 1 individual. The primary individual was placed indeterminately in the coffin with the head to the west facing east. The following grave goods for lot #9162 were recovered: 1 safety pin, 2 buttons, 1 metal snap.

Burial lot #9163 was located in area N with the coordinates in the NW corner of the coffin N267'3" E121'9". The elevation at the base of the coffin in the NW corner was 728.683 famsl. The 6 sided sub-adult coffin (23" x 10") contained the remains of 1 individual. The primary individual was placed indeterminately in the coffin. There were no grave goods recovered for lot #9163.

Burial lot #9164 was located in area N with the coordinates in the NW corner of the coffin N270'1" E122'8". The elevation at the base of the coffin in the NW corner was 728.203 famsl. The indeterminately sided sub-adult coffin (22" x 10") contained the remains of 1 individual. The primary individual was face up with the head to the west facing east. The following grave goods for lot #9164 were recovered: cloth, 4 safety pins, 3 buttons.

Burial lot #9165 was located in area N with the coordinates in the NW corner of the coffin N273'2" E122'1". The elevation at the base of the coffin in the NW corner was 728.213 famsl. The indeterminately sided sub-adult coffin (22" x 6") contained the remains of 1 individual. The primary individual was placed indeterminately in the coffin. The following grave goods for lot #9165 were recovered: fossil.

Burial lot #9166 was located in area N with the coordinates in the NW corner of the coffin N276'3" E121'3". The elevation at the base of the coffin in the NW corner was 728.083 famsl. The indeterminately sided sub-adult coffin (24" x 8") contained the remains of 1 individual. The primary individual was face up with the head to the west facing east. The following grave goods for lot #9166 were recovered: 3 safety pins, 2 buttons, wooden grave marker.

Burial lot #9167 was located in area N with the coordinates in the NW corner of the coffin N279'1" E122'3". The elevation at the base of the coffin in the NW corner was 727.873 famsl. The 6 sided sub-adult coffin (? x 11") contained the remains of 1 individual. The primary individual was face up with the head to the west facing east. The following grave goods for lot #9167 were recovered: safety pins, 1 button.

Burial lot #9168 was located in area N with the coordinates in the NW corner of the coffin N282' E122'3". The elevation at the base of the coffin in the NW corner was 727.923 famsl. The indeterminately sided sub-adult coffin (30" x 8") contained the remains of 1 individual. The primary individual was placed indeterminately in the coffin with the head to the west facing east. The following grave goods for lot #9168 were recovered: 1 button.

Burial lot #9170 was located in area N with the coordinates in the NW corner of the coffin N290'9" E116'3". The elevation at the base of the coffin in the NW corner was 728.353 famsl. The 6 sided sub-adult coffin (dimensions indeterminate) contained the remains of 1 individual. The primary individual was face up with the head to the west facing east. The following grave goods for lot #9170 were recovered: 1 safety pin.

Burial lot #9171 was located in area N with the coordinates in the NW corner of the coffin N287'7" E116'. The elevation at the base of the coffin in the NW corner was 728.333 famsl. The 6 sided sub-adult coffin (34" x 10") contained the remains of 1 individual. The primary individual was placed indeterminately in the coffin with the head to the west facing east. The following grave goods for lot #9171 were recovered: 3 safety pins, 5 buttons.

Burial lot #9172 was located in area N with the coordinates in the NW corner of the coffin N284'2" E116'3". The elevation at the base of the coffin in the NW corner was 728.303 famsl. The 6 sided sub-adult coffin (36" x 12") contained the remains of 1 individual. The primary individual was face up with the head to the west facing east. The following grave goods for lot #9172 were recovered: 4 buttons.

Burial lot #9173 was located in area N with the coordinates in the NW corner of the coffin N281'3" E117'. The elevation at the base of the coffin in the NW corner was 728.283 famsl. The sub-adult coffin's type and dimensions are indeterminate. It contained the remains of 1 individual. The primary individual was face up with the head to the west facing east. The following grave goods for lot #9173 were recovered: 2 safety pins, 4 buttons.

Burial lot #9175 was located in area N with the coordinates in the NW corner of the coffin N276'2" E116'4". The elevation at the base of the coffin in the NW corner was 728.463 famsl. The 6 sided sub-adult coffin (44" x 12") contained the remains of 1 individual. The primary individual was face up with the head to the west facing east. The following grave goods for lot #9175 were recovered: 2 safety pins, 4 buttons.

Burial lot #9176 was located in area N with the coordinates in the NW corner of the coffin N273'9" E116'. The elevation at the base of the coffin in the NW corner was 728.463 famsl. The 6 sided sub-adult coffin (44" x 13") contained the remains of 1 individual. The primary individual was face up with the head to the west facing east. The following grave goods for lot #9176 were recovered: 1 button.

Burial lot #9177 was located in area N with the coordinates in the NW corner of the coffin N271'1" E116'5". The elevation at the base of the coffin in the NW corner was 728.463 famsl. The 6 sided sub-adult coffin (38" x 9") contained the remains of 1 individual. The primary individual was face up with the head to the west facing east. The following grave goods for lot #9177 were recovered: 1 safety pin, 4 buttons.

Burial lot #9178 was located in area N with the coordinates in the NW corner of the coffin N268'4" E116'8". The elevation at the base of the coffin in the NW corner was 728.773 famsl. The 6 sided sub-adult coffin (30" x 9") contained the remains of 1 individual. The primary individual was placed indeterminately in the coffin with the head to the west facing east. The following grave goods for lot #9178 were recovered: 3 safety pins, 3 buttons.

Burial lot #9179 was located in area N with the coordinates in the NW corner of the coffin N265'9" E116'8". The elevation at the base of the coffin in the NW corner was 729.123 famsl. The 6 sided sub-adult coffin (33" x 14") contained the remains of 1 individual. The primary individual was placed indeterminately in the coffin with the head to the west facing east. The following grave goods for lot #9179 were recovered: 3 safety pins, 2 buttons.

Burial lot #9180 was located in area N with the coordinates in the NW corner of the coffin N262'10" E116'9". The elevation at the base of the coffin in the NW corner was 729.123 famsl. The 6 sided sub-adult coffin (44" x 12") contained the remains of 1 individual. The primary individual was placed indeterminately in the coffin with the head to the west facing east. The following grave goods for lot #9180 were recovered: 4 buttons.

Burial lot #9181 was located in area N with the coordinates in the NW corner of the coffin N260'6" E116'3". The elevation at the base of the coffin in the NW corner was 729.203 famsl. The indeterminately sided sub-adult coffin (45" x 8") contained the remains of 1 individual. The primary individual was placed indeterminately in the coffin with the head to the west facing east. There were no grave goods recovered for lot #9181.

Burial lot #9182 was located in area N with the coordinates in the NW corner of the coffin N257'5" E117'3". The elevation at the base of the coffin in the NW corner was 729.143 famsl. The 4 sided sub-adult coffin (21" x 5.5") contained the remains of 1 individual. The primary individual was face up with the head to the west facing east. There were no grave goods recovered for lot #9182.

Burial lot #9183 was located in area N with the coordinates in the NW corner of the coffin N254'8" E117'5". The elevation at the base of the coffin in the NW corner was 729.113 famsl. The 4 sided sub-adult coffin (25.5" x 6.5") contained the remains of 1 individual. The primary individual was placed indeterminately in the coffin with the head to the west facing east. The following grave goods for lot #9183 were recovered: buttons.

Burial lot #9184 was located in area N with the coordinates in the NW corner of the coffin N251'11" E117'2". The elevation at the base of the coffin in the NW corner was 729.093 famsl. The 6 sided sub-adult coffin (28" x ?") contained the remains of 1 individual. The primary individual was placed indeterminately in the coffin with the head to the west facing east. The following grave goods for lot #9184 were recovered: 1 button, safety pins.

Burial lot #9185 was located in area N with the coordinates in the NW corner of the coffin N222'10" E110'5". The elevation at the base of the coffin in the NW corner was 729.413 famsl. The indeterminately sided sub-adult coffin (37" x 7.5") contained the remains of 1 individual. The primary individual was placed indeterminately in the coffin. The following grave goods for lot #9185 were recovered: 2 safety pins.

Burial lot #9186 was located in area N with the coordinates in the NW corner of the coffin N255' E111'1". The elevation at the base of the coffin in the NW corner was 729.423 famsl. The 6 sided sub-adult coffin (? x 9") contained the remains of 1 individual. The primary individual was face up with the head to the west facing east. The following grave goods for lot #9186 were recovered: cloth, 7 safety pins, 1 button.

Burial lot #9187 was located in area N with the coordinates in the NW corner of the coffin N257'7" E110'9". The elevation at the base of the coffin in the NW corner was 729.373 famsl. The 6 sided sub-adult coffin (37" x 11") contained the remains of 1 individual. The primary individual was face up with the head to the west facing east. The following grave goods for lot #9187 were recovered: 10 buttons, 1 safety pin, 1 pin, metal fragments.

Burial lot #9189 was located in area N with the coordinates in the NW corner of the coffin N262'6" E110'7". The elevation at the base of the coffin in the NW corner was 729.353 famsl. The sub-adult coffin's type and dimensions are indeterminate. contained the remains of 1 individual. The primary individual was face up with the head to the west facing east. There were no grave goods recovered for lot #9189.

Burial lot #9190 was located in area N with the coordinates in the NW corner of the coffin N263'10" E111'3". The elevation at the base of the coffin in the NW corner was 729.433 famsl. The 6 sided sub-adult coffin (22" x 8") contained the remains of 1 individual. The primary individual was face up with the head to the west facing east. The following grave goods for lot #9190 were recovered: 4 safety pins, 1 button, cloth.

Burial lot #9191 was located in area N with the coordinates in the NW corner of the coffin N266' E111'1". The elevation at the base of the coffin in the NW corner was 729.223 famsl. The 6 sided sub-adult coffin (33" x 9") contained the remains of 1 individual. The primary individual was face up with the head to the west facing east. The following grave goods for lot #9191 were recovered: 2 buttons.

Burial lot #9192 was located in area N with the coordinates in the NW corner of the coffin N268'5" E110'9". The elevation at the base of the coffin in the NW corner was 729.223 famsl. The 6 sided sub-adult coffin (26" x 9") contained the remains of 1 individual. The primary individual was placed indeterminately in the coffin. There were no grave goods recovered for lot #9192.

Burial lot #9193 was located in area N with the coordinates in the NW corner of the coffin N270'10" E110'10". The elevation at the base of the coffin in the NW corner was 728.953 famsl. The 4 sided sub-adult coffin (28" x 6") contained the remains of 1 individual. The primary individual was placed indeterminately in the coffin. The following grave goods for lot #9193 were recovered: 6 buttons.

Burial lot #9194 was located in area N with the coordinates in the NW corner of the coffin N273'6" E110'10". The elevation at the base of the coffin in the NW corner was 728.833 famsl. The 4 sided sub-adult coffin (26" x 6") contained the remains of 1 individual. The primary individual was face up with the head to the west facing east. The following grave goods for lot #9194 were recovered: 1 safety pin.

Burial lot #9195 was located in area N with the coordinates in the NW corner of the coffin N275'10" E110'10'. The elevation at the base of the coffin in the NW corner was 728.763 famsl. The 6 sided sub-adult coffin (27" x 9") contained the remains of 1 individual. The primary individual was face up with the head to the west facing east. The following grave goods for lot #9195 were recovered: 1 safety pin.

Burial lot #9196 was located in area N with the coordinates in the NW corner of the coffin N279' E109'9". The elevation at the base of the coffin in the NW corner was 728.343 famsl. Only minimal evidence of a burial at this location was found. The primary individual was face up with the head to the west facing east. There were no grave goods recovered for lot #9196.

Burial lot #9202 was located in area N with the coordinates in the NW corner of the coffin N268'4" E106'. The elevation at the base of the coffin in the NW corner was 729.143 famsl. The 6 sided sub-adult coffin (24" x 9") contained the remains of 1 individual. The primary individual was face up with the head to the west facing east. The following grave goods for lot #9202 were recovered: 1 safety pin.

Burial lot #9203 was located in area N with the coordinates in the NW corner of the coffin N265'9" E106'1". The elevation at the base of the coffin in the NW corner was 729.133 famsl. The indeterminately sided sub-adult coffin (25" x 3") contained the remains of 1 individual. The primary individual was laying on its side with the head to the west facing east. The following grave goods for lot #9203 were recovered: 1 safety pin.

Burial lot #9204 was located in area N with the coordinates in the NW corner of the coffin N263'2" E106'7". The elevation at the base of the coffin in the NW corner was 729.303 famsl. The 4 sided sub-adult coffin (38" x 9") contained the remains of 1 individual. The primary individual was face up with the head to the west facing east. The following grave goods for lot #9204 were recovered: 2 safety pins.

Burial lot #9205 was located in area N with the coordinates in the NW corner of the coffin N261' E107'1". The elevation at the base of the coffin in the NW corner was 729.313 famsl. The 6 sided sub-adult coffin (37.5" x 8.5") contained the remains of 1 individual. The primary individual was face up with the head to the west facing east. The following grave goods for lot #9205 were recovered: 1 safety pin.

Burial lot #9206 was located in area N with the coordinates in the NW corner of the coffin N257'6" E109'1". The elevation at the base of the coffin in the NW corner was 729.533 famsl. The 4 sided sub-adult coffin (? " x 7") contained the remains of 1 individual. The primary individual was placed indeterminately in the coffin. The following grave goods for lot #9206 were recovered: 1 safety pin.

Burial lot #9207 was located in area N with the coordinates in the NW corner of the coffin N259'6" E103'8". The elevation at the base of the coffin in the NW corner was 729.373 famsl. The sub-adult coffin's type and dimensions are indeterminate. It contained the remains of 1 individual. The primary individual was placed indeterminately in the coffin. There were no grave goods recovered for lot #9207.

Burial lot #9208 was located in area N with the coordinates in the NW corner of the coffin N265'3" E102'4". The elevation at the base of the coffin in the NW corner was 729.233 famsl. The * sided sub-adult coffin (24" x 6") contained the remains of 1 individual. The primary individual was placed indeterminately in the coffin with the head to the west facing east. There were no grave goods recovered for lot #9208.

Burial lot #9209 was located in area N with the coordinates in the NW corner of the coffin N351'3" E150'4". The elevation at the base of the coffin in the NW corner was 727.513 famsl. The 6 sided sub-adult coffin (76" x 20") contained the remains of 1 individual. The primary individual was face up with the head to the west facing east. There were no grave goods recovered for lot #9209.

Burial lot #9210 was located in area N with the coordinates in the NW corner of the coffin N350'11" E158'4". The elevation at the base of the coffin in the NW corner was 727.263 famsl. The 6 sided sub-adult coffin (74.5" x 20") contained the remains of 1 individual. The primary individual was face up with the head to the west facing east. There were no grave goods recovered for lot #9210.

Burial lot #9211 was located in area N with the coordinates in the NW corner of the coffin N347' E159'. The elevation at the base of the coffin in the NW corner was 727.483 famsl. The 6 sided sub-adult coffin (73" x 18") contained the remains of 1 individual. The primary individual was face up with the head to the west facing east. There were no grave goods recovered for lot #9211.

Burial lot #9212 was located in area N with the coordinates in the NW corner of the coffin N347'10" E150'11". The elevation at the base of the coffin in the NW corner was 728.103 famsl. The 6 sided adult coffin (75" x 19") contained the remains of 1 individual. The primary individual was face up with the head to the west facing east. There were no grave goods recovered for lot #9212.

Burial lot #9213 was located in area N with the coordinates in the NW corner of the coffin N347'5" E142'5". The elevation at the base of the coffin in the NW corner was 728.093 famsl. The 6 sided sub-adult coffin (73" x 18") contained the remains of 1 individual. The primary individual was face up with the head to the west facing east. There were no grave goods recovered for lot #9213.

Burial lot #9214 was located in area N with the coordinates in the NW corner of the coffin N347'9" E134'. The elevation at the base of the coffin in the NW corner was 727.883 famsl. The 6 sided adult coffin (74" x 18") contained the remains of 1 individual. The primary individual was placed indeterminately in the coffin. There were no grave goods recovered for lot #9214.

Burial lot #9215 was located in area N with the coordinates in the NW corner of the coffin N345' E108'7". The elevation at the base of the coffin in the NW corner was 729.043 famsl. The 6 sided adult coffin (77" x 18") contained the remains of 1 individual. The primary individual was face up with the head to the west facing east. There were no grave goods recovered for lot #9215.

Burial lot #9216 was located in area N with the coordinates in the NW corner of the coffin N345'1" E117'3". The elevation at the base of the coffin in the NW corner was 728.593 famsl. The 6 sided adult coffin (71" x 17") contained the remains of 1 individual. The primary individual was face up with the head to the west facing east. There were no grave goods recovered for lot #9216.

Burial lot #9217 was located in area N with the coordinates in the NW corner of the coffin N344'7" E126'4". The elevation at the base of the coffin in the NW corner was 728.543 famsl. The 6 sided adult coffin (75" x 17") contained the remains of 1 individual. The primary individual was face up with the head to the west facing east. There were no grave goods recovered for lot #9217.

Burial lot #9218 was located in area N with the coordinates in the NW corner of the coffin N344'2" E134'6". The elevation at the base of the coffin in the NW corner was 728.843 famsl. The 6 sided adult coffin (72" x 15") contained the remains of 1 individual. The primary individual was face up with the head to the west facing east. The following grave goods for lot #9218 were recovered: 5 buttons.

Burial lot #9219 was located in area N with the coordinates in the NW corner of the coffin N343'8" E143'. The elevation at the base of the coffin in the NW corner was 728.113 famsl. The 6 sided adult coffin (65" x 17") contained the remains of 1 individual. The primary individual was face up with the head to the west facing east. There were no grave goods recovered for lot #9219.

Burial lot #9220 was located in area N with the coordinates in the NW corner of the coffin N343'10" E150'9". The elevation at the base of the coffin in the NW corner was 728.453 famsl. The 6 sided adult coffin (75" x 15") contained the remains of 1 individual. The primary individual was face up with the head to the west facing east. There were no grave goods recovered for lot #9220.

Burial lot #9221 was located in area N with the coordinates in the NW corner of the coffin N343'2" E158'5". The elevation at the base of the coffin in the NW corner was 727.883 famsl. The 6 sided adult coffin (72" x 19.5") contained the remains of 1 individual. The primary individual was face up with the head to the west facing east. The following grave goods for lot #9221 were recovered: 1 safety pin.

Burial lot #9222 was located in area N with the coordinates in the NW corner of the coffin N339'7" E158'2". The elevation at the base of the coffin in the NW corner was 727.803 famsl. The 6 sided adult coffin (78" x 19") contained the remains of 1 individual. The primary individual was face up with the head to the west facing east. There were no grave goods recovered for lot #9222.

Burial lot #9223 was located in area N with the coordinates in the NW corner of the coffin N339'8" E149'11". The elevation at the base of the coffin in the NW corner was 727.963 famsl. The 6 sided adult coffin (76" x 20") contained the remains of 1 individual. The primary individual was face up with the head to the west facing east. There were no grave goods recovered for lot #9223.

Burial lot #9224 was located in area N with the coordinates in the NW corner of the coffin N339'10" E142'2". The elevation at the base of the coffin in the NW corner was 728.163 famsl. The 6 sided adult coffin (74" x 18") contained the remains of 1 individual. The primary individual was face up with the head to the west facing east. The following grave goods for lot #9224 were recovered: 4 buttons.

Burial lot #9225 was located in area N with the coordinates in the NW corner of the coffin N339'7" E135'. The elevation at the base of the coffin in the NW corner was 728.233 famsl. The 6 sided adult coffin (75" x 18") contained the remains of 1 individual. The primary individual was face up with the head to the west facing east. There were no grave goods recovered for lot #9225.

Burial lot #9226 was located in area N with the coordinates in the NW corner of the coffin N341' E125'9". The elevation at the base of the coffin in the NW corner was 728.563 famsl. The 6 sided adult coffin (72" x 16.5") contained the remains of 1 individual. The primary individual was face up with the head to the west facing east. There were no grave goods recovered for lot #9226.

Burial lot #9227 was located in area N with the coordinates in the NW corner of the coffin N341'3" E116'9". The elevation at the base of the coffin in the NW corner was 728.853 famsl. The 6 sided adult coffin (79" x 20") contained the remains of 1 individual. The primary individual was face down with the head to the west facing east. There were no grave goods recovered for lot #9227.

Burial lot #9228 was located in area N with the coordinates in the NW corner of the coffin N341'3" E107'3". The elevation at the base of the coffin in the NW corner was 728.913 famsl. The 6 sided adult coffin (75" x 17") contained the remains of 1 individual. The primary individual was face up with the head to the west facing east. There were no grave goods recovered for lot #9228.

Burial lot #9229 was located in area N with the coordinates in the NW corner of the coffin N338' E106'8". The elevation at the base of the coffin in the NW corner was 729.143 famsl. The 6 sided adult coffin (72" x 18") contained the remains of 1 individual. The primary individual was face up with the head to the west facing east. There were no grave goods recovered for lot #9229.

Burial lot #9230 was located in area N with the coordinates in the NW corner of the coffin N337'3" E116'11". The elevation at the base of the coffin in the NW corner was 728.513 famsl. The 6 sided adult coffin (72" x 17") contained the remains of 1 individual. The primary individual was face up with the head to the west facing east. There were no grave goods recovered for lot #9230.

Burial lot #9231 was located in area N with the coordinates in the NW corner of the coffin N337'1" E125'6". The elevation at the base of the coffin in the NW corner was 728.393 famsl. The 6 sided adult coffin (76" x 18") contained the remains of 1 individual. The primary individual was face up with the head to the west facing east. The following grave goods for lot #9231 were recovered: 2 buttons, 1 cross, 9 rosary beads, metal.

Burial lot #9232 was located in area N with the coordinates in the NW corner of the coffin N336'8" E133'3". The elevation at the base of the coffin in the NW corner was 728.233 famsl. The 6 sided adult coffin (75" x 17") contained the remains of 1 individual. The primary individual was face up with the head to the west facing east. The following grave goods for lot #9232 were recovered: cloth, 2 pennies, 1 button.

Burial lot #9233 was located in area N with the coordinates in the NW corner of the coffin N336'3" E142'2". The elevation at the base of the coffin in the NW corner was 728.013 famsl. The 6 sided adult coffin (72" x 19") contained the remains of 1 individual. The primary individual was face up with the head to the west facing east. The following grave goods for lot #9233 were recovered: 1 safety pin.

Burial lot #9234 was located in area N with the coordinates in the NW corner of the coffin N335'11" E150'6". The elevation at the base of the coffin in the NW corner was 727.883 famsl. The 6 sided adult coffin (72" x ?") contained the remains of 1 individual. Additional skeletal elements were founds in the pit fill (lot #9326) The primary individual was face up with the head to the west facing east. There were no grave goods recovered for lot #9234.

Burial lot #9235 was located in area N with the coordinates in the NW corner of the coffin N335'8" E158'6". The elevation at the base of the coffin in the NW corner was 727.783 famsl. The 6 sided adult coffin (75" x 21") contained the remains of 1 individual. The primary individual was face up with the head to the west facing east. There were no grave goods recovered for lot #9235.

Burial lot #9236 was located in area N with the coordinates in the NW corner of the coffin N331'11" E158'. The elevation at the base of the coffin in the NW corner was 727.633 famsl. The 6 sided adult coffin (78" x 21") contained the remains of 1 individual. The primary individual was face up with the head to the west facing east. There were no grave goods recovered for lot #9236.

Burial lot #9237 was located in area N with the coordinates in the NW corner of the coffin N331'10" E150'3". The elevation at the base of the coffin in the NW corner was 727.923 famsl. The 6 sided adult coffin (72" x 18") contained the remains of 1 individual. The primary individual was face up with the head to the west facing east. There were no grave goods recovered for lot #9237.

Burial lot #9238 was located in area N with the coordinates in the NW corner of the coffin N332'7" E142'. The elevation at the base of the coffin in the NW corner was 727.933 famsl. The 6 sided adult coffin (75" x 19") contained the remains of 1 individual. The primary individual was face up with the head to the west facing east. There were no grave goods recovered for lot #9238.

Burial lot #9239 was located in area N with the coordinates in the NW corner of the coffin N332'10" E133'6". The elevation at the base of the coffin in the NW corner was 728.153 famsl. The 6 sided adult coffin (78" x 21") contained the remains of 1 individual. The primary individual was face up with the head to the west facing east. There were no grave goods recovered for lot #9239.

Burial lot #9240 was located in area N with the coordinates in the NW corner of the coffin N332'2" E125'. The elevation at the base of the coffin in the NW corner was 728.243 famsl. The 6 sided adult coffin (74" x 19") contained the remains of 1 individual. The primary individual was face up with the head to the west facing east. There were no grave goods recovered for lot #9240.

Burial lot #9241 was located in area N with the coordinates in the NW corner of the coffin N333'4" E115'9". The elevation at the base of the coffin in the NW corner was 728.583 famsl. The 6 sided adult coffin (75" x 18") contained the remains of 1 individual. The primary individual was face up with the head to the west facing east. The following grave goods for lot #9241 were recovered: 1 finger ring.

Burial lot #9242 was located in area N with the coordinates in the NW corner of the coffin N333'8" E107'5". The elevation at the base of the coffin in the NW corner was 728.923 famsl. The indeterminately sided adult coffin (73" x 20") contained the remains of 1 individual. The primary individual was face up with the head to the west facing east. There were no grave goods recovered for lot #9242.

Burial lot #9243 was located in area N with the coordinates in the NW corner of the coffin N330' E107'. The elevation at the base of the coffin in the NW corner was 728.553 famsl. The 6 sided adult coffin (72" x 18") contained the remains of 1 individual. The primary individual was face up with the head to the west facing east. There were no grave goods recovered for lot #9243.

Burial lot #9244 was located in area N with the coordinates in the NW corner of the coffin N329'9" E115'5". The elevation at the base of the coffin in the NW corner was 728.513 famsl. The 6 sided adult coffin (79" x 22.5") contained the remains of 1 individual. The primary individual was face up with the head to the west facing east. The following grave goods for lot #9244 were recovered: 1 safety pin, gold flecks.

Burial lot #9245 was located in area N with the coordinates in the NW corner of the coffin N329'1" E125'1". The elevation at the base of the coffin in the NW corner was 728.073 famsl. The 6 sided adult coffin (74" x 18") contained the remains of 1 individual. The primary individual was face up with the head to the west facing east. The following grave goods for lot #9245 were recovered: 1 gold ring, metal fragments.

Burial lot #9246 was located in area N with the coordinates in the NW corner of the coffin N329'2" E133'5". The elevation at the base of the coffin in the NW corner was 727.883 famsl. The 6 sided adult coffin (74" x 18.5") contained the remains of 1 individual. The primary individual was face up with the head to the west facing east. There were no grave goods recovered for lot #9246.

Burial lot #9247 was located in area N with the coordinates in the NW corner of the coffin N328'9" E142'. The elevation at the base of the coffin in the NW corner was 727.713 famsl. The 6 sided adult coffin (74" x 18") contained the remains of 2 individuals. The secondary burial was the remains of a sub-adult (lot #9327). The primary individual was face up with the head to the west facing east. There were no grave goods recovered for lot #9247.

Burial lot #9248 was located in area N with the coordinates in the NW corner of the coffin N328'2" E150'. The elevation at the base of the coffin in the NW corner was 727.663 famsl. The 6 sided adult coffin (72" x 18") contained the remains of 1 individual. The primary individual was face up with the head to the west facing east. There were no grave goods recovered for lot #9248.

Burial lot #9249 was located in area N with the coordinates in the NW corner of the coffin N327'11" E158'6". The elevation at the base of the coffin in the NW corner was 727.563 famsl. The 6 sided adult coffin (73" x 17") contained the remains of 1 individual. The primary individual was face up with the head to the west facing east. The following grave goods for lot #9249 were recovered: 4 safety pins.

Burial lot #9250 was located in area N with the coordinates in the NW corner of the coffin N324'3" E158'. The elevation at the base of the coffin in the NW corner was 727.443 famsl. The 6 sided adult coffin (74" x 21") contained the remains of 1 individual. The primary individual was face up with the head to the west facing east. There were no grave goods recovered for lot #9250.

Burial lot #9251 was located in area N with the coordinates in the NW corner of the coffin N324'6" E149'10". The elevation at the base of the coffin in the NW corner was 727.663 famsl. The 6 sided adult coffin (74" x 19") contained the remains of 1 individual. The primary individual was face up with the head to the west facing east. There were no grave goods recovered for lot #9251.

Burial lot #9252 was located in area N with the coordinates in the NW corner of the coffin N324'6" E141'4". The elevation at the base of the coffin in the NW corner was 727.663 famsl. The N324'6" E141'4" sided adult coffin (74.5" x 22") contained the remains of 1 individual. The primary individual was face down with the head to the west facing east. The following grave goods for lot #9252 were recovered: 7 buttons, gold(?) fragments, 1 metal plate.

Burial lot #9253 was located in area N with the coordinates in the NW corner of the coffin N325'1" E133'. The elevation at the base of the coffin in the NW corner was 727.833 famsl. The 6 sided sub-adult coffin (70" x 19") contained the remains of 1 individual. The primary individual was face up with the head to the west facing east. The following grave goods for lot #9253 were recovered: 1 bottle.

Burial lot #9254 was located in area N with the coordinates in the NW corner of the coffin N325'3" E124'4". The elevation at the base of the coffin in the NW corner was 728.213 famsl. The 6 sided adult coffin (76" x 19") contained the remains of 1 individual. The primary individual was face up with the head to the west facing east. The following grave goods for lot #9254 were recovered: 3 buttons.

Burial lot #9255 was located in area N with the coordinates in the NW corner of the coffin N325'6" E115'. The elevation at the base of the coffin in the NW corner was 728.453 famsl. The 6 sided adult coffin (74" x 18") contained the remains of 1 individual. The primary individual was face up with the head to the west facing east. There were no grave goods recovered for lot #9255.

Burial lot #9256 was located in area N with the coordinates in the NW corner of the coffin N326'1" E107'1". The elevation at the base of the coffin in the NW corner was 728.473 famsl. The 6 sided adult coffin (71" x 20.5") contained the remains of 1 individual. The primary individual was face up with the head to the west facing east. There were no grave goods recovered for lot #9256.

Burial lot #9257 was located in area N with the coordinates in the NW corner of the coffin N322'2" E106'9". The elevation at the base of the coffin in the NW corner was 728.523 famsl. The 6 sided adult coffin (74" x 19") contained the remains of 1 individual. The primary individual was face up with the head to the west facing east. The following grave goods for lot #9257 were recovered: 5 buttons.

Burial lot #9258 was located in area N with the coordinates in the NW corner of the coffin N321'8" E115'7". The elevation at the base of the coffin in the NW corner was 728.303 famsl. The 6 sided adult coffin (69" x 19") contained the remains of 1 individual. The primary individual was face up with the head to the west facing east. There were no grave goods recovered for lot #9258.

Burial lot #9259 was located in area N with the coordinates in the NW corner of the coffin N320'11" E124'4". The elevation at the base of the coffin in the NW corner was 728.033 famsl. The 6 sided adult coffin (72" x 19") contained the remains of 1 individual. The primary individual was face up with the head to the west facing east. There were no grave goods recovered for lot #9259.

Burial lot #9260 was located in area N with the coordinates in the NW corner of the coffin N321'2" E137'. The elevation at the base of the coffin in the NW corner was 727.743 famsl. The 6 sided adult coffin (72" x 18") contained the remains of 1 individual. The primary individual was face up with the head to the west facing east. There were no grave goods recovered for lot #9260.

Burial lot #9261 was located in area N with the coordinates in the NW corner of the coffin N320'3" E141'3". The elevation at the base of the coffin in the NW corner was 727.513 famsl. The 6 sided adult coffin (72" x 19") contained the remains of 1 individual. The primary individual was face up with the head to the west facing east. There were no grave goods recovered for lot #9261.

Burial lot #9262 was located in area N with the coordinates in the NW corner of the coffin N320'5" E149'5". The elevation at the base of the coffin in the NW corner was 727.743 famsl. The 6 sided adult coffin (75" x 21") contained the remains of 1 individual. Additional skeletal elements (amputation) were found in the coffin (lot #9328). The primary individual was face up with the head to the west facing east. The following grave goods for lot #9262 were recovered: 1 safety pin.

Burial lot #9263 was located in area N with the coordinates in the NW corner of the coffin N320'1" E157'11". The elevation at the base of the coffin in the NW corner was 727.253 famsl. The 6 sided adult coffin (78" x 18") contained the remains of 1 individual. The primary individual was face up with the head to the west facing east. The following grave goods for lot #9263 were recovered: 1 safety pin, 1 bowl.

Burial lot #9264 was located in area N with the coordinates in the NW corner of the coffin N315'10" E158'2". The elevation at the base of the coffin in the NW corner was 727.123 famsl. The 6 sided sub-adult coffin (71" x 16") contained the remains of 1 individual. The primary individual was face up with the head to the west facing east. The following grave goods for lot #9264 were recovered: 2 buttons, safety pins.

Burial lot #9265 was located in area N with the coordinates in the NW corner of the coffin N316'5" E149'8". The elevation at the base of the coffin in the NW corner was 727.643 famsl. The 6 sided adult coffin (73" x 18") contained the remains of 1 individual. The primary individual was face up with the head to the west facing east. There were no grave goods recovered for lot #9265.

Burial lot #9266 was located in area N with the coordinates in the NW corner of the coffin N317'2" E141'1". The elevation at the base of the coffin in the NW corner was 727.433 famsl. The 6 sided adult coffin (71" x 18") contained the remains of 1 individual. The primary individual was face up with the head to the west facing east. There were no grave goods recovered for lot #9266.

Burial lot #9267 was located in area N with the coordinates in the NW corner of the coffin N317' E133'3". The elevation at the base of the coffin in the NW corner was 727.703 famsl. The 6 sided adult coffin (66" x 18") contained the remains of 1 individual. The primary individual was placed indeterminately in the coffin with the head to the west facing east. There were no grave goods recovered for lot #9267.

Burial lot #9268 was located in area N with the coordinates in the NW corner of the coffin N317'7" E124'2". The elevation at the base of the coffin in the NW corner was 727.973 famsl. The 6 sided adult coffin (73" x 19") contained the remains of 1 individual. The primary individual was face up with the head to the west facing east. The following grave goods for lot #9268 were recovered: metal fragments.

Burial lot #9269 was located in area N with the coordinates in the NW corner of the coffin n317'6" E114'11". The elevation at the base of the coffin in the NW corner was 727.973 famsl. The 6 sided adult coffin (72" x 18") contained the remains of 1 individual. The primary individual was face up with the head to the west facing east. The following grave goods for lot #9269 were recovered: 2 buttons, suspenders with 5 buttons and two adjusters.

Burial lot #9270 was located in area N with the coordinates in the NW corner of the coffin N318'1" E106'9". The elevation at the base of the coffin in the NW corner was 728.453 famsl. The 6 sided adult coffin (72" x 19") contained the remains of 1 individual. The primary individual was face up with the head to the west facing east. The following grave goods for lot #9270 were recovered: 4 buttons.

Burial lot #9271 was located in area N with the coordinates in the NW corner of the coffin N314'3" E106'8". The elevation at the base of the coffin in the NW corner was 728.403 famsl. The 6 sided adult coffin (73" x 19") contained the remains of 1 individual. The primary individual was face up with the head to the west facing east. The following grave goods for lot #9271 were recovered: 4 buttons, 1 collar, 1 copper bell clasp..

Burial lot #9272 was located in area N with the coordinates in the NW corner of the coffin N313'9" E115'3". The elevation at the base of the coffin in the NW corner was 728.103 famsl. The 6 sided adult coffin (70" x 19") contained the remains of 1 individual. The primary individual was face up with the head to the west facing east. There were no grave goods recovered for lot #9272.

Burial lot #9273 was located in area N with the coordinates in the NW corner of the coffin N313'5" E123'10". The elevation at the base of the coffin in the NW corner was 728.023 famsl. The 6 sided adult coffin (72" x 20") contained the remains of 1 individual. The primary individual was face up with the head to the west facing east. The following grave goods for lot #9273 were recovered: 3 buttons.

Burial lot #9274 was located in area N with the coordinates in the NW corner of the coffin N313'2" E132'11". The elevation at the base of the coffin in the NW corner was 727.643 famsl. The 6 sided adult coffin (75" x 17") contained the remains of 1 individual. The primary individual was face up with the head to the west facing east. The following grave goods for lot #9274 were recovered: 2 buttons, gold dust.

Burial lot #9275 was located in area N with the coordinates in the NW corner of the coffin N312'10" E141'. The elevation at the base of the coffin in the NW corner was 727.293 famsl. The 6 sided adult coffin (71" x 19") contained the remains of 1 individual. The primary individual was face up with the head to the west facing east. The following grave goods for lot #9275 were recovered: 3 buttons, 1 safety pin.

Burial lot #9276 was located in area N with the coordinates in the NW corner of the coffin N312'9" E149'3". The elevation at the base of the coffin in the NW corner was 727.533 famsl. The 6 sided adult coffin (78.5" x 20.5") contained the remains of 1 individual. The primary individual was face up with the head to the west facing east. There were no grave goods recovered for lot #9276.

Burial lot #9277 was located in area N with the coordinates in the NW corner of the coffin N311'11" E157'10". The elevation at the base of the coffin in the NW corner was 727.093 famsl. The 6 sided sub-adult coffin (74" x 19") contained the remains of 1 individual. The primary individual was face up with the head to the west facing east. There were no grave goods recovered for lot #9277.

Burial lot #9278 was located in area N with the coordinates in the NW corner of the coffin N308'8" E157'9". The elevation at the base of the coffin in the NW corner was 727.013 famsl. The 6 sided adult coffin (69" x 18") contained the remains of 1 individual. The primary individual was face up with the head to the west facing east. There were no grave goods recovered for lot #9278.

Burial lot #9279 was located in area N with the coordinates in the NW corner of the coffin N309' E149'3". The elevation at the base of the coffin in the NW corner was 727.073 famsl. The 6 sided adult coffin (72" x 18") contained the remains of 1 individual. The primary individual was face up with the head to the west facing east. There were no grave goods recovered for lot #9279.

Burial lot #9280 was located in area N with the coordinates in the NW corner of the coffin N308'11" E140'9". The elevation at the base of the coffin in the NW corner was 727.203 famsl. The 6 sided adult coffin (72" x 18") contained the remains of 1 individual. The primary individual was face up with the head to the west facing east. There were no grave goods recovered for lot #9280.

Burial lot #9281 was located in area N with the coordinates in the NW corner of the coffin N309'3" E132'6". The elevation at the base of the coffin in the NW corner was 727.353 famsl. The 6 sided adult coffin (74" x 20") contained the remains of 1 individual. The primary individual was face up with the head to the west facing east. There were no grave goods recovered for lot #9281.

Burial lot #9282 was located in area N with the coordinates in the NW corner of the coffin N309'7" E123'7". The elevation at the base of the coffin in the NW corner was 728.053 famsl. The 6 sided adult coffin (74" x 19") contained the remains of 1 individual. The primary individual was face up with the head to the west facing east. There were no grave goods recovered for lot #9282.

Burial lot #9283 was located in area N with the coordinates in the NW corner of the coffin N310'2" E116'7". The elevation at the base of the coffin in the NW corner was 728.203 famsl. The 6 sided adult coffin (74" x 20") contained the remains of 1 individual. The primary individual was face up with the head to the west facing east. There were no grave goods recovered for lot #9283.

Burial lot #9284 was located in area N with the coordinates in the NW corner of the coffin N310' E106'7". The elevation at the base of the coffin in the NW corner was 728.203 famsl. The 6 sided adult coffin (74" x 18") contained the remains of 1 individual. The primary individual was face down with the head to the west facing east. There were no grave goods recovered for lot #9284.

Burial lot #9285 was located in area N with the coordinates in the NW corner of the coffin N306'10" E107'4". The elevation at the base of the coffin in the NW corner was 728.143 famsl. The 6 sided adult coffin (70" x 18") contained the remains of 1 individual. The primary individual was face up with the head to the west facing east. There were no grave goods recovered for lot #9285.

Burial lot #9286 was located in area N with the coordinates in the NW corner of the coffin N306'7" E115'1". The elevation at the base of the coffin in the NW corner was 728.043 famsl. The 6 sided adult coffin (74" x 18") contained the remains of 1 individual. The primary individual was face up with the head to the west facing east. There were no grave goods recovered for lot #9286.

Burial lot #9287 was located in area N with the coordinates in the NW corner of the coffin N306'5" E123'10". The elevation at the base of the coffin in the NW corner was 727.963 famsl. The 6 sided adult coffin (75" x 19") contained the remains of 1 individual. The primary individual was face up with the head to the west facing east. There were no grave goods recovered for lot #9287.

Burial lot #9288 was located in area N with the coordinates in the NW corner of the coffin N306'4" E132'4". The elevation at the base of the coffin in the NW corner was 727.323 famsl. The 6 sided adult coffin (74" x 20") contained the remains of 1 individual. The primary individual was face up with the head to the west facing east. There were no grave goods recovered for lot #9288.

Burial lot #9289 was located in area N with the coordinates in the NW corner of the coffin N305'9" E140'7". The elevation at the base of the coffin in the NW corner was 727.403 famsl. The 6 sided adult coffin (74" x 21") contained the remains of 1 individual. The primary individual was face up with the head to the west facing east. There were no grave goods recovered for lot #9289.

Burial lot #9290 was located in area N with the coordinates in the NW corner of the coffin N304'9" E149'2". The elevation at the base of the coffin in the NW corner was 727.033 famsl. The 6 sided adult coffin (74" x 18") contained the remains of 1 individual. The primary individual was face up with the head to the west facing east. The following grave goods for lot #9290 were recovered: 2 buttons.

Burial lot #9291 was located in area N with the coordinates in the NW corner of the coffin N305' E157'9". The elevation at the base of the coffin in the NW corner was 726.863 famsl. The 6 sided adult coffin (71" x 18") contained the remains of 1 individual. The primary individual was face up with the head to the west facing east. The following grave goods for lot #9291 were recovered: 2 safety pins, 2 buttons.

Burial lot #9292 was located in area N with the coordinates in the NW corner of the coffin N301'1" E157'3". The elevation at the base of the coffin in the NW corner was 726.383 famsl. The 6 sided adult coffin (71" x 18") contained the remains of 1 individual. The primary individual was face up with the head to the west facing east. The following grave goods for lot #9292 were recovered: 1 cloth collar, 4 buttons, cloth, .

Burial lot #9293 was located in area N with the coordinates in the NW corner of the coffin N301'6" E149'. The elevation at the base of the coffin in the NW corner was 726.983 famsl. The 6 sided adult coffin (73" x 19") contained the remains of 1 individual. The primary individual was face up with the head to the west facing east. There were no grave goods recovered for lot #9293.

Burial lot #9294 was located in area N with the coordinates in the NW corner of the coffin N301'6" E140'4". The elevation at the base of the coffin in the NW corner was 727.163 famsl. The 6 sided adult coffin (73" x 18") contained the remains of 1 individual. The primary individual was face up with the head to the west facing east. The following grave goods for lot #9294 were recovered: 3.5 buttons.

Burial lot #9295 was located in area N with the coordinates in the NW corner of the coffin N301'10" E128'10". The elevation at the base of the coffin in the NW corner was 727.283 famsl. The 6 sided adult coffin (72" x 20") contained the remains of 1 individual. The primary individual was face up with the head to the west facing east. The following grave goods for lot #9295 were recovered: glass.

Burial lot #9296 was located in area N with the coordinates in the NW corner of the coffin N301'8" E123'8". The elevation at the base of the coffin in the NW corner was 727.813 famsl. The 6 sided adult coffin (75" x 18") contained the remains of 1 individual. The primary individual was face up with the head to the west facing east. There were no grave goods recovered for lot #9296.

Burial lot #9297 was located in area N with the coordinates in the NW corner of the coffin N301'9" E115'. The elevation at the base of the coffin in the NW corner was 727.893 famsl. The 6 sided adult coffin (73" x 22") contained the remains of 1 individual. The primary individual was placed indeterminately in the coffin with the head to the west facing east. The following grave goods for lot #9297 were recovered: 6 buttons.

Burial lot #9298 was located in area N with the coordinates in the NW corner of the coffin N302'6" E106'9". The elevation at the base of the coffin in the NW corner was 728.043 famsl. The 6 sided adult coffin (74" x 20") contained the remains of 1 individual. The primary individual was face up with the head to the west facing east. There were no grave goods recovered for lot #9298.

Burial lot #9299 was located in area N with the coordinates in the NW corner of the coffin N297'1" E115'1". The elevation at the base of the coffin in the NW corner was 727.723 famsl. The 6 sided adult coffin (75" x 19.5") contained the remains of 1 individual. The primary individual was face up with the head to the west facing east. There were no grave goods recovered for lot #9299.

Burial lot #9300 was located in area N with the coordinates in the NW corner of the coffin N297'3" E123'9". The elevation at the base of the coffin in the NW corner was 727.703 famsl. The 6 sided adult coffin (72" x 18") contained the remains of 1 individual. The primary individual was face up with the head to the west facing east. There were no grave goods recovered for lot #9300.

Burial lot #9301 was located in area N with the coordinates in the NW corner of the coffin N287' E131'9". The elevation at the base of the coffin in the NW corner was 727.173 famsl. The 6 sided coffin (73" x 20") contained the remains of 1 individual. The primary individual was placed indeterminately in the coffin with the head to the west facing east. There were no grave goods recovered for lot #9301.

Burial lot #9302 was located in area N with the coordinates in the NW corner of the coffin N297' E139'10". The elevation at the base of the coffin in the NW corner was 727.053 famsl. The 6 sided adult coffin (74" x 18") contained the remains of 1 individual. The primary individual was face up with the head to the west facing east. The following grave goods for lot #9302 were recovered: glass.

Burial lot #9303 was located in area N with the coordinates in the NW corner of the coffin N296'9" E149'6". The elevation at the base of the coffin in the NW corner was 727.173 famsl. The 6 sided adult coffin (78" x 19") contained the remains of 1 individual. The primary individual was face up with the head to the west facing east. There were no grave goods recovered for lot #9303.

Burial lot #9304 was located in area N with the coordinates in the NW corner of the coffin N296' E157'6". The elevation at the base of the coffin in the NW corner was 726.793 famsl. The 6 sided adult coffin (72.5" x 20.75") contained the remains of 1 individual. The primary individual was face up with the head to the west facing east. There were no grave goods recovered for lot #9304.

Burial lot #9305 was located in area N with the coordinates in the NW corner of the coffin N288'5" E102'3". The elevation at the base of the coffin in the NW corner was 728.723 famsl. The 6 sided adult coffin (74" x 18") contained the remains of 1 individual. Additional skeletal elements were found in the pit fill (lot #9331). Another primary burial was found in the pit fill (see lot #9333) The primary individual was face up with the head to the west facing east. There were no grave goods recovered for lot #9305.

Burial lot #9308 was located in area N with the coordinates in the NW corner of the coffin N284'2" E102'4". The elevation at the base of the coffin in the NW corner was 728.803 famsl. The 6 sided adult coffin (72" x 19") contained the remains of 1 individual. Additional skeletal elements were found in the pit fill (lot #9330). The primary individual was face up with the head to the west facing east. There were no grave goods recovered for lot #9308.

Burial lot #9309 was located in area N with the coordinates in the NW corner of the coffin N277'9" E102'10". The elevation at the base of the coffin in the NW corner was 728.753 famsl. The 6 sided adult coffin (76" x 18") contained the remains of 1 individual. Additional skeletal elements were found in the pit fill The primary individual was face up with the head to the west facing east. There were no grave goods recovered for lot #9309.

Burial lot #9310 was located in area N with the coordinates in the NW corner of the coffin N278'3" E94'3". The elevation at the base of the coffin in the NW corner was 729.243 famsl. The 6 sided adult coffin (80" x 23") contained the remains of 1 individual. Additional skeletal elements were found in the pit fill (lot #9329) The primary individual was face up with the head to the west facing east. There were no grave goods recovered for lot #9310.

Burial lot #9311 was located in area N with the coordinates in the NW corner of the coffin N276'2" E85'9". The elevation at the base of the coffin in the NW corner was 730.013 famsl. The indeterminately sided adult coffin (72" x 18") contained the remains of 1 individual. Additional skeletal elements were found in the pit fill (lot #9334). The primary individual was face up with the head to the west facing east. There were no grave goods recovered for lot #9311.

Burial lot #9312 was located in area N with the coordinates in the NW corner of the coffin N278'11" E75'10". The elevation at the base of the coffin in the NW corner was 729.683 famsl. The 6 sided sub-adult coffin (60" x 20") contained the remains of 1 individual. The primary individual was face up with the head to the west facing east. The following grave goods for lot #9312 were recovered: 4 safety pins.

Burial lot #9313 was located in area N with the coordinates in the NW corner of the coffin N274'10" E76'9". The elevation at the base of the coffin in the NW corner was 729.683 famsl. The 6 sided adult coffin (75" x 21") contained the remains of 1 individual. The primary individual was face up with the head to the west facing east. There were no grave goods recovered for lot #9313.

Burial lot #9314 was located in area N with the coordinates in the NW corner of the coffin N262'9" E77'. The elevation at the base of the coffin in the NW corner was 729.793 famsl. The 6 sided adult coffin (72" x 18") contained the remains of 1 individual. The primary individual was face up with the head to the west facing east. The following grave goods for lot #9314 were recovered: 1 safety pin, plastic/rubber tubing.

Burial lot #9315 was located in area N with the coordinates in the NW corner of the coffin N253'5" E102'1". The elevation at the base of the coffin in the NW corner was 729.183 famsl. The 6 sided adult coffin (76" x 21.5") contained the remains of 1 individual. The primary individual was face up with the head to the west facing east. There were no grave goods recovered for lot #9315.

Burial lot #9316 was located in area N with the coordinates in the NW corner of the coffin N268'3" E96'. The elevation at the base of the coffin in the NW corner was 729.193 famsl. The indeterminately sided adult coffin (68" x 20") contained the remains of 1 individual. The primary individual was placed indeterminately in the coffin. The following grave goods for lot #9316 were recovered: 1 safety pin.

Burial lot #9317 was located in area N with the coordinates in the NW corner of the coffin N273'1" E98'11". The elevation at the base of the coffin in the NW corner was 729.033 famsl. The adult coffin's type and dimensions are indeterminate due to previous disturbance by construction. It contained the remains of 1 individual and additional skeletal elements (lot #9332). The primary individual was face up with the head to the west facing east. There were no grave goods recovered for lot #9317.

Burial lot #9318 was located in area N with the coordinates in the NW corner of the coffin N271'2" E102'9". The elevation at the base of the coffin in the NW corner was 728.783 famsl. The 6 sided adult coffin (78" x 19") contained the remains of 1 individual. The primary individual was face up with the head to the west facing east. There were no grave goods recovered for lot #9318.

Burial lot #9319 was located in area N with the coordinates in the NW corner of the coffin N281'9" E118'10". The elevation at the base of the coffin in the NW corner was 727.853 famsl. The coffin's type and dimensions are indeterminate. It contained the remains of 1 individual. The primary individual was placed indeterminately in the coffin. There were no grave goods recovered for lot #9319.

Burial lot #9321 was located in area N with the coordinates in the NW corner of the coffin N289'9" E137'3". The elevation at the base of the coffin in the NW corner was 727.143 famsl. The 6 sided sub-adult coffin (59" x 13") contained the remains of 1 individual. The primary individual was face up with the head to the west facing east. The following grave goods for lot #9321 were recovered: 3 buttons.

Burial lot #9322 was located in area N with the coordinates in the NW corner of the coffin N290'1" E159'4". The elevation at the base of the coffin in the NW corner was 724.893 famsl. The 6 sided sub-adult coffin (40" x 113") contained the remains of 1 individual. The primary individual was face up with the head to the west facing east. There were no grave goods recovered for lot #9322.

Burial lot #9323 was located in area N with the coordinates in the NW corner of the coffin N289'4" E163'11". The elevation at the base of the coffin in the NW corner was 724.743 famsl. The indeterminately sided sub-adult coffin (24" x 8") contained the remains of 1 individual. The primary individual was face up with the head to the west facing east. The following grave goods for lot #9323 were recovered: 1 safety pin, 3 buttons.

Burial lot #9324 was located in area N with the coordinates in the NW corner of the coffin N286'11" E162'9". The elevation at the base of the coffin in the NW corner was 724.713 famsl. The indeterminately sided sub-adult coffin (42" x 14") contained the remains of 1 individual. The primary individual was face up with the head to the west facing east. The following grave goods for lot #9324 were recovered: 1 safety pin, 2 buttons.

Burial lot #9325 was located in area N with the coordinates in the NW corner of the coffin N283'6" E158'. The elevation at the base of the coffin in the NW corner was 724.873 famsl. The 4 sided sub-adult coffin (23" x 9") contained the remains of 1 individual. The primary individual was placed indeterminately in the coffin with the head to the northwest facing northeast. The following grave goods for lot #9325 were recovered: 2 buttons.

Burial lot #9333 was located in area N with the coordinates in the NW corner of the coffin N288'5" E102'3". The elevation at the base of the coffin in the NW corner was 728.723 famsl. The 6 sided adult coffin (72" x 20") contained the remains of 1 individual. Additional skeletal elements were found in the pit fill (lot #9331). An additional primary burial was located in the pit fill (see lot #9335). The primary individual was face up with the head to the west facing east. The following grave goods for lot #9333 were recovered: 1 cross, 2 safety pins, 1 bead, cloth.

Burial lot #9336 was located in area N with the coordinates in the NW corner of the coffin N275'8" E168'8". The elevation at the base of the coffin in the NW corner was 724.763 famsl. The indeterminately sided sub-adult coffin (21.5" x 7.5") contained the remains of 1 individual. The primary individual was placed indeterminately in the coffin with the head to the west facing east. There were no grave goods recovered for lot #9336.

Burial lot #9337 was located in area N with the coordinates in the NW corner of the coffin N278'6" E169'3". The elevation at the base of the coffin in the NW corner was 724.883 famsl. The 6 sided sub-adult coffin (26" x ?") contained the remains of 1 individual. The primary individual was placed indeterminately in the coffin with the head to the west facing east. There were no grave goods recovered for lot #9337.

Burial lot #9338 was located in area N with the coordinates in the NW corner of the coffin N280'8" E168'9". The elevation at the base of the coffin in the NW corner was 724.843 famsl. The 6 sided sub-adult coffin (32" x 8") contained the remains of 1 individual. The primary individual was face up with the head to the west facing east. The following grave goods for lot #9338 were recovered: 2 safety pins, 2 bracelets.

Burial lot #9339 was located in area N with the coordinates in the NW corner of the coffin N283'10" E168'7". The elevation at the base of the coffin in the NW corner was 725.003 famsl. The indeterminately sided sub-adult coffin (32.5" x 8.25") contained the remains of 1 individual. The primary individual was placed indeterminately in the coffin with the head to the west facing east. The following grave goods for lot #9339 were recovered: 1 button.

Burial lot #9340 was located in area N with the coordinates in the NW corner of the coffin N286'4" E168'8". The elevation at the base of the coffin in the NW corner was 725.023 famsl. The indeterminately sided sub-adult coffin (21" x 8.5") contained the remains of 1 individual. The primary individual was placed indeterminately in the coffin with the head to the west facing east. There were no grave goods recovered for lot #9340.

Burial lot #9341 was located in area N with the coordinates in the NW corner of the coffin N289'2" E168'9". The elevation at the base of the coffin in the NW corner was 724.863 famsl. The 6 sided sub-adult coffin (26" x 9") contained the remains of 1 individual. The primary individual was face up with the head to the west facing east. The following grave goods for lot #9341 were recovered: 1 safety pin, 1 button.

Burial lot #9342 was located in area N with the coordinates in the NW corner of the coffin N296'2" E166'8". The elevation at the base of the coffin in the NW corner was 725.953 famsl. The 6 sided adult coffin (76" x 19") contained the remains of 1 individual. The primary individual was face up with the head to the west facing east. The following grave goods for lot #9342 were recovered: 3.75 button.

Burial lot #9343 was located in area N with the coordinates in the NW corner of the coffin N300' E167'3". The elevation at the base of the coffin in the NW corner was 725.783 famsl. The 6 sided adult coffin (? x 16") contained the remains of 1 individual. The primary individual was face up with the head to the west facing east. There were no grave goods recovered for lot #9343.

Burial lot #9344 was located in area N with the coordinates in the NW corner of the coffin N304' E166'2". The elevation at the base of the coffin in the NW corner was 727.693 famsl. The 6 sided adult coffin (74" x 17") contained the remains of 1 individual. The primary individual was face up with the head to the west facing east. The following grave goods for lot #9344 were recovered: buttons.

Burial lot #9345 was located in area N with the coordinates in the NW corner of the coffin N308' E166'6". The elevation at the base of the coffin in the NW corner was 726.743 famsl. The 6 sided adult coffin (74" x 20") contained the remains of 1 individual. The primary individual was face up with the head to the west facing east. There were no grave goods recovered for lot #9345.

Burial lot #9346 was located in area N with the coordinates in the NW corner of the coffin N311'10" E166'8". The elevation at the base of the coffin in the NW corner was 727.063 famsl. The 6 sided adult coffin (73" x 20") contained the remains of 1 individual. The primary individual was face up with the head to the west facing east. The following grave goods for lot #9346 were recovered: 1 safety pin, 3 buttons.

Burial lot #9347 was located in area N with the coordinates in the NW corner of the coffin N316' E166'4". The elevation at the base of the coffin in the NW corner was 727.083 famsl. The 6 sided adult coffin (72" x 20") contained the remains of 1 individual. The primary individual was face up with the head to the west facing east. There were no grave goods recovered for lot #9347.

Burial lot #9348 was located in area N with the coordinates in the NW corner of the coffin N319'6" E166'3". The elevation at the base of the coffin in the NW corner was 727.053 famsl. The 6 sided adult coffin (74" x 20") contained the remains of 1 individual. The primary individual was face up with the head to the west facing east. There were no grave goods recovered for lot #9348.

Burial lot #9349 was located in area N with the coordinates in the NW corner of the coffin N324' E166'9". The elevation at the base of the coffin in the NW corner was 726.913 famsl. The 6 sided adult coffin (72" x 20") contained the remains of 1 individual. The primary individual was face up with the head to the west facing east. There were no grave goods recovered for lot #9349.

Burial lot #9350 was located in area N with the coordinates in the NW corner of the coffin N327'10" E166'8". The elevation at the base of the coffin in the NW corner was 727.513 famsl. The 6 sided adult coffin (71" x 17") contained the remains of 1 individual. The primary individual was face up with the head to the west facing east. The following grave goods for lot #9350 were recovered: 6 buttons.

Burial lot #9351 was located in area N with the coordinates in the NW corner of the coffin N331'6" E167'3". The elevation at the base of the coffin in the NW corner was 727.743 famsl. The 6 sided adult coffin (72" x 18") contained the remains of 1 individual. The primary individual was face up with the head to the west facing east. The following grave goods for lot #9351 were recovered: 6 safety pins, 6 plastic hair pins.

Burial lot #9352 was located in area N with the coordinates in the NW corner of the coffin N335'3" E166'6". The elevation at the base of the coffin in the NW corner was 727.713 famsl. The 6 sided adult coffin (72" x 18") contained the remains of 1 individual. The primary individual was face up with the head to the west facing east. The following grave goods for lot #9352 were recovered: 1 button.

Burial lot #9353 was located in area N with the coordinates in the NW corner of the coffin N339' E166'4". The elevation at the base of the coffin in the NW corner was 727.863 famsl. The 6 sided adult coffin (74" x 19") contained the remains of 1 individual. The primary individual was face up with the head to the west facing east. There were no grave goods recovered for lot #9353.

Burial lot #9354 was located in area N with the coordinates in the NW corner of the coffin N342'10" E166'9". The elevation at the base of the coffin in the NW corner was 727.913 famsl. The 6 sided adult coffin (74" x 20") contained the remains of 1 individual. The primary individual was face up with the head to the west facing east. There were no grave goods recovered for lot #9354.

Burial lot #9355 was located in area N with the coordinates in the NW corner of the coffin N346'9" E166'. The elevation at the base of the coffin in the NW corner was 727.903 famsl. The 6 sided adult coffin (75" x 17") contained the remains of 1 individual. The primary individual was face up with the head to the west facing east. The following grave goods for lot #9355 were recovered: 1 pair of shoes, 1 gold cufflink, 3 buttons, 1 safety pin, 1 pin.

Burial lot #9356 was located in area N with the coordinates in the NW corner of the coffin N350'6" E166'5". The elevation at the base of the coffin in the NW corner was 728.013 famsl. The 6 sided adult coffin (76" x 21") contained the remains of 1 individual. The primary individual was face up with the head to the west facing east. There were no grave goods recovered for lot #9356.

Burial lot #9357 was located in area N with the coordinates in the NW corner of the coffin N350'1" E173'3". The elevation at the base of the coffin in the NW corner was 727.443 famsl. The 6 sided adult coffin (72" x 18") contained the remains of 1 individual. The primary individual was face up with the head to the west facing east. The following grave goods for lot #9357 were recovered: 4 safety pins, cloth.

Burial lot #9358 was located in area N with the coordinates in the NW corner of the coffin N346'1" E175'. The elevation at the base of the coffin in the NW corner was 727.373 famsl. The 6 sided adult coffin (70" x 19") contained the remains of 1 individual. The primary individual was face up with the head to the west facing east. There were no grave goods recovered for lot #9358.

Burial lot #9359 was located in area N with the coordinates in the NW corner of the coffin N342'7" E174'6". The elevation at the base of the coffin in the NW corner was 727.543 famsl. The 6 sided adult coffin (75" x 21") contained the remains of 1 individual. The primary individual was face up with the head to the west facing east. There were no grave goods recovered for lot #9359.

Burial lot #9360 was located in area N with the coordinates in the NW corner of the coffin N338'11" E174'. The elevation at the base of the coffin in the NW corner was 727.483 famsl. The 6 sided adult coffin (71" x 18") contained the remains of 1 individual. The primary individual was face up with the head to the west facing east. There were no grave goods recovered for lot #9360.

Burial lot #9361 was located in area N with the coordinates in the NW corner of the coffin N335'2" E174'6". The elevation at the base of the coffin in the NW corner was 727.443 famsl. The 6 sided adult coffin (74" x 19") contained the remains of 1 individual. The primary individual was face up with the head to the west facing east. The following grave goods for lot #9361 were recovered: 1 button.

Burial lot #9362 was located in area N with the coordinates in the NW corner of the coffin N331' E174'9". The elevation at the base of the coffin in the NW corner was 727.363 famsl. The 6 sided adult coffin (72" x 19.5") contained the remains of 1 individual. The primary individual was face up with the head to the west facing east. The following grave goods for lot #9362 were recovered: 1 safety pin.

Burial lot #9363 was located in area N with the coordinates in the NW corner of the coffin N327'3" E175'5". The elevation at the base of the coffin in the NW corner was 726.953 famsl. The 6 sided adult coffin (72" x 17") contained the remains of 1 individual. The primary individual was face up with the head to the west facing east. The following grave goods for lot #9363 were recovered: 1 safety pin.

Burial lot #9364 was located in area N with the coordinates in the NW corner of the coffin N323'7" E174'9". The elevation at the base of the coffin in the NW corner was 726.463 famsl. The 6 sided adult coffin (dimensions indeterminate) contained the remains of 1 individual. The primary individual was face up with the head to the west facing east. There were no grave goods recovered for lot #9364.

Burial lot #9365 was located in area N with the coordinates in the NW corner of the coffin N319'6" E175'1". The elevation at the base of the coffin in the NW corner was 726.433 famsl. The 6 sided adult coffin (72" x 20") contained the remains of 1 individual. The primary individual was face up with the head to the west facing east. There were no grave goods recovered for lot #9365.

Burial lot #9366 was located in area N with the coordinates in the NW corner of the coffin N315'9" E175'2". The elevation at the base of the coffin in the NW corner was 726.603 famsl. The 6 sided adult coffin (71" x 18") contained the remains of 1 individual. The primary individual was face up with the head to the west facing east. There were no grave goods recovered for lot #9366.

Burial lot #9367 was located in area N with the coordinates in the NW corner of the coffin N311'10" E175'3". The elevation at the base of the coffin in the NW corner was 726.883 famsl. The 6 sided adult coffin (65" x 22") contained the remains of 1 individual. The primary individual was face up with the head to the west facing east. There were no grave goods recovered for lot #9367.

Burial lot #9368 was located in area N with the coordinates in the NW corner of the coffin N308' E175'2". The elevation at the base of the coffin in the NW corner was 726.273 famsl. The 6 sided adult coffin (72" x 18") contained the remains of 1 individual. The primary individual was face up with the head to the west facing east. The following grave goods for lot #9368 were recovered: portion of a glass bottle.

Burial lot #9369 was located in area N with the coordinates in the NW corner of the coffin N304'6" E174'7". The elevation at the base of the coffin in the NW corner was 726.173 famsl. The 6 sided adult coffin (70" x 21") contained the remains of 1 individual. The primary individual was face up with the head to the west facing east. There were no grave goods recovered for lot #9369.

Burial lot #9370 was located in area N with the coordinates in the NW corner of the coffin N299'9" E175'. The elevation at the base of the coffin in the NW corner was 725.983 famsl. The 6 sided adult coffin (72" x 18") contained the remains of 1 individual. The primary individual was face up with the head to the west facing east. The following grave goods for lot #9370 were recovered: glass.

Burial lot #9371 was located in area N with the coordinates in the NW corner of the coffin N295'5" E177'2". The elevation at the base of the coffin in the NW corner was 726.133 famsl. The 6 sided adult coffin (73" x 17") contained the remains of 1 individual. The primary individual was face up with the head to the west facing east. There were no grave goods recovered for lot #9371.

Burial lot #9376 was located in area N with the coordinates in the NW corner of the coffin N279'2" E174'7". The elevation at the base of the coffin in the NW corner was 724.643 famsl. The 4 sided sub-adult coffin (22" x 9") did not contain any visible remains. The primary individual was placed indeterminately in the coffin. There were no grave goods recovered for lot #9376.

Burial lot #9377 was located in area N with the coordinates in the NW corner of the coffin N275'11" E174'8". The elevation at the base of the coffin in the NW corner was 724.623 famsl. The 6 sided sub-adult coffin (19" x 7") contained the remains of 1 individual. The primary individual was placed indeterminately in the coffin with the head to the west facing east. The following grave goods for lot #9377 were recovered: cloth, 1 safety pin, 3 buttons.

Burial lot #9378 was located in area N with the coordinates in the NW corner of the coffin N274'1" E174'4". The elevation at the base of the coffin in the NW corner was 724.593 famsl. The 4 sided sub-adult coffin (24" x 8") contained the remains of 1 individual. The primary individual was face up with the head to the west facing east. The following grave goods for lot #9378 were recovered: cloth, 3 safety pins.

Burial lot #9379 was located in area N with the coordinates in the NW corner of the coffin N270'6" E174'. The elevation at the base of the coffin in the NW corner was 724.593 famsl. The 6 sided sub-adult coffin (24" x 9") contained the remains of 1 individual. The primary individual was placed indeterminately in the coffin with the head to the west facing east. The following grave goods for lot #9379 were recovered: 2 safety pins.

Burial lot #9380 was located in area N with the coordinates in the NW corner of the coffin N267'4" E174'3". The elevation at the base of the coffin in the NW corner was 724.453 famsl. The 4 sided sub-adult coffin (21" x 8") contained the remains of 1 individual. The primary individual was placed indeterminately in the coffin. There were no grave goods recovered for lot #9380.

Burial lot #9381 was located in area N with the coordinates in the NW corner of the coffin N265'1" E174'7". The elevation at the base of the coffin in the NW corner was 724.383 famsl. The indeterminately sided sub-adult coffin (23" x 8") contained the remains of 1 individual. The primary individual was placed indeterminately in the coffin with the head to the west facing east. There were no grave goods recovered for lot #9381.

Burial lot #9384 was located in area N with the coordinates in the NW corner of the coffin N257'9" E175'10". The elevation at the base of the coffin in the NW corner was 724.493 famsl. The sub-adult coffin's type and dimensions are indeterminate due to heavy disturbance by the water trench. It contained the remains of 1 individual. The primary individual was placed indeterminately in the coffin with the head to the west facing east. There were no grave goods recovered for lot #9384.

Burial lot #9385 was located in area N with the coordinates in the NW corner of the coffin N255'3" E174'3". The elevation at the base of the coffin in the NW corner was 724.463 famsl. The 4 sided sub-adult coffin (20" x 8") contained the remains of 1 individual. The primary individual was face up with the head to the west facing east. There were no grave goods recovered for lot #9385.

Burial lot #9386 was located in area N with the coordinates in the NW corner of the coffin N257'11" E179'. The elevation at the base of the coffin in the NW corner was 724.333 famsl. The 4 sided sub-adult coffin (dimensions indeterminate) contained the remains of 1 individual. The primary individual was on its left side (fetal position) with the head to the west facing east. There were no grave goods recovered for lot #9386.

Burial lot #9387 was located in area N with the coordinates in the NW corner of the coffin N256'6" E178'11". The elevation at the base of the coffin in the NW corner was 724.283 famsl. The 4 sided sub-adult coffin (32" x 9") contained the remains of 1 individual. The primary individual was placed indeterminately in the coffin with the head to the west facing east. The following grave goods for lot #9387 were recovered: 3 safety pins, cloth.

Burial lot #9388 was located in area N with the coordinates in the NW corner of the coffin N262'11" E178'11". The elevation at the base of the coffin in the NW corner was 724.193 famsl. The 4 sided sub-adult coffin (22" x 9") contained the remains of 1 individual. The primary individual was face up with the head to the west facing east. The following grave goods for lot #9388 were recovered: 2 safety pins.

Burial lot #9389 was located in area N with the coordinates in the NW corner of the coffin N265'7" E180'3". The elevation at the base of the coffin in the NW corner was 724.223 famsl. The sub-adult coffin's type and dimensions are indeterminate. No remains were found. There were no grave goods recovered for lot #9389.

Burial lot #9390 was located in area N with the coordinates in the NW corner of the coffin N268'5" E178'9". The elevation at the base of the coffin in the NW corner was 724.323 famsl. The 6 sided sub-adult coffin (32" x 10") contained the remains of 1 individual. The primary individual was placed indeterminately in the coffin with the head to the west facing east. The following grave goods for lot #9390 were recovered: 2 safety pins.

Burial lot #9392 was located in area N with the coordinates in the NW corner of the coffin N274'2" E180'9". The elevation at the base of the coffin in the NW corner was 724.423 famsl. The 4 sided sub-adult coffin (21" x 8") contained the remains of 1 individual. The primary individual was face up with the head to the west facing east. There were no grave goods recovered for lot #9392.

Burial lot #9393 was located in area N with the coordinates in the NW corner of the coffin N276'1" E179'2". The elevation at the base of the coffin in the NW corner was 724.423 famsl. The 4 sided sub-adult coffin (30" x ?") contained the remains of 1 individual. The primary individual was placed indeterminately in the coffin with the head to the west facing east. The following grave goods for lot #9393 were recovered: 1 safety pin.

Burial lot #9394 was located in area N with the coordinates in the NW corner of the coffin N278'10" E179'6". The elevation at the base of the coffin in the NW corner was 724.443 famsl. The 4 sided sub-adult coffin (21" x 8") contained the remains of 1 individual. The primary individual was face up with the head to the west facing east. There were no grave goods recovered for lot #9394.

Burial lot #9396 was located in area N with the coordinates in the NW corner of the coffin N284'3" E159'5". The elevation at the base of the coffin in the NW corner was 724.573 famsl. The 6 sided coffin (21" x 8") contained no remains. The primary individual was placed indeterminately in the coffin. There were no grave goods recovered for lot #9396.

Burial lot #9399 was located in area N with the coordinates in the NW corner of the coffin N253'6" E139'5". The elevation at the base of the coffin in the NW corner was 726.993 famsl. The 4 sided coffin (20" x 5") contained no remains. The primary individual was placed indeterminately in the coffin. There were no grave goods recovered for lot #9399.

Burial lot #9400 was located in area N with the coordinates in the NW corner of the coffin N289'6" E142'2". The elevation at the base of the coffin in the NW corner was 726.293 famsl. The 6 sided sub-adult coffin (47" x 14") contained the remains of 1 individual. The primary individual was face up with the head to the west facing east. The following grave goods for lot #9400 were recovered: safety pins, cloth, lead, 5 buttons.

Burial lot #9401 was located in area N with the coordinates in the NW corner of the coffin N282'8" E154'6". The elevation at the base of the coffin in the NW corner was 727.833 famsl. The 6 sided sub-adult coffin (48" x 13") contained the remains of 1 individual. The primary individual was on its right side with the head to the west facing south. The following grave goods for lot #9401 were recovered: 4 buttons, 1 safety pin.

Burial lot #9402 was located in area N with the coordinates in the NW corner of the coffin N289'11" E148'5". The elevation at the base of the coffin in the NW corner was 725.733 famsl. The 6 sided sub-adult coffin (29.5" x 12") contained the remains of 1 individual. The primary individual was placed indeterminately in the coffin with the head to the west facing east. The following grave goods for lot #9402 were recovered: 1 button, 1 safety pin.

Burial lot #9403 was located in area N with the coordinates in the NW corner of the coffin N289'10" E153'3". The elevation at the base of the coffin in the NW corner was 725.143 famsl. The 6 sided sub-adult coffin (53" x 16") contained the remains of 1 individual. The primary individual was face up with the head to the west facing east. There were no grave goods recovered for lot #9403.

Burial lot #9405 was located in area N with the coordinates in the NW corner of the coffin N283'1" E153'7". The elevation at the base of the coffin in the NW corner was 725.233 famsl. The indeterminately sided sub-adult coffin (29" x 8") contained the remains of 2 individuals (lot #9406). The primary individual was face up with the head to the west facing east. The following grave goods for lot #9405 were recovered: cloth.

Burial lot #9408 was located in area N with the coordinates in the NW corner of the coffin N213'1" E178'9". The elevation at the base of the coffin in the NW corner was 725.843 famsl. The 4 sided sub-adult coffin (21" x 7") contained the remains of 1 individual. The primary individual was placed indeterminately in the coffin with the head to the west facing east. There were no grave goods recovered for lot #9408.

Burial lot #9409 was located in area N with the coordinates in the NW corner of the coffin N215'6" E178'4". The elevation at the base of the coffin in the NW corner was 725.933 famsl. The indeterminately sided sub-adult coffin (35" x 8") contained the remains of 1 individual. The primary individual was placed indeterminately with the head to the west facing east. The following grave goods for lot #9409 were recovered: 2 safety pins.

Burial lot #9410 was located in area N with the coordinates in the NW corner of the coffin N220'11" E179'. The elevation at the base of the coffin in the NW corner was 725.503 famsl. The 4 sided sub-adult coffin (22" x 8") contained the remains of 1 individual. The primary individual was placed indeterminately in the coffin with the head to the west facing east. There were no grave goods recovered for lot #9410.

Burial lot #9411 was located in area N with the coordinates in the NW corner of the coffin N223'9" E178'7". The elevation at the base of the coffin in the NW corner was 725.363 famsl. The 4 sided sub-adult coffin (23" x 8") contained no remains. The primary individual was placed indeterminately in the coffin. There were no grave goods recovered for lot #9411.

Burial lot #9412 was located in area N with the coordinates in the NW corner of the coffin N252'4" E174'1". The elevation at the base of the coffin in the NW corner was 725.773 famsl. The 4 sided sub-adult coffin (33" x 9") contained the remains of 1 individual. The primary individual was face up with the head to the west facing east. The following grave goods for lot #9412 were recovered: 1 safety pin.

Burial lot #9413 was located in area N with the coordinates in the NW corner of the coffin N213'8" E174'2". The elevation at the base of the coffin in the NW corner was 726.033 famsl. The 4 sided sub-adult coffin (dimensions indeterminate due to deterioration) contained the remains of 1 individual. The primary individual was on its left side (fetal position) with the head to the west facing east. There were no grave goods recovered for lot #9413.

Burial lot #9415 was located in area N with the coordinates in the NW corner of the coffin N223'6" E168'5". The elevation at the base of the coffin in the NW corner was 726.473 famsl. The 4 sided sub-adult coffin (23" x 6") contained the remains of 1 individual. The primary individual was face up with the head to the west facing east. The following grave goods for lot #9415 were recovered: 4 safety pins, 6 buttons.

Burial lot #9416 was located in area N with the coordinates in the NW corner of the coffin N221'3" E163'9". The elevation at the base of the coffin in the NW corner was 726.603 famsl. The 4 sided sub-adult coffin (25" x 8") contained the remains of 1 individual. The primary individual was placed indeterminately in the coffin with the head to the west facing east. The following grave goods for lot #9416 were recovered: 1 safety pin.

Burial lot #9417 was located in area N with the coordinates in the NW corner of the coffin N213'6" E164'. The elevation at the base of the coffin in the NW corner was 726.863 famsl. The 4 sided sub-adult coffin (24" x 9") contained the remains of 1 individual. The primary individual was placed indeterminately in the coffin with the head to the west facing east. The following grave goods for lot #9417 were recovered: glass from mason jar.

Burial lot #9418 was located in area N with the coordinates in the NW corner of the coffin N213'7" E158'7". The elevation at the base of the coffin in the NW corner was 727.323 famsl. The 4 sided sub-adult coffin (dimensions indeterminate due to deterioration) contained the remains of 1 individual. The primary individual was placed indeterminately in the coffin with the head to the east facing west. There were no grave goods recovered for lot #9418.

Burial lot #9419 was located in area N with the coordinates in the NW corner of the coffin N215'10" E158'11". The elevation at the base of the coffin in the NW corner was 727.293 famsl. The 4 sided sub-adult coffin (19" x 7") contained the remains of 1 individual. The primary individual was placed indeterminately in the coffin with the head to the west facing east. There were no grave goods recovered for lot #9419.

Burial lot #9420 was located in area N with the coordinates in the NW corner of the coffin N222'3" E158'11". The elevation at the base of the coffin in the NW corner was 722.073 famsl. The 6 sided sub-adult coffin (30" x 10") contained the remains of 1 individual. The primary individual was face up with the head to the west facing east. The following grave goods for lot #9420 were recovered: 2 buttons.

Burial lot #9421 was located in area N with the coordinates in the NW corner of the coffin N223'3" E154'10". The elevation at the base of the coffin in the NW corner was 727.263 famsl. The 6 sided sub-adult coffin (27" x 9") contained the remains of 1 individual. The primary individual was placed indeterminately in the coffin with the head to the west facing east. There were no grave goods recovered for lot #9421.

Burial lot #9422 was located in area N with the coordinates in the NW corner of the coffin N21'9" E155'11". The elevation at the base of the coffin in the NW corner was 727.333 famsl. The indeterminately sided sub-adult coffin (24" x 8") contained the remains of 1 individual. The primary individual was face up with the head to the west facing east. The following grave goods for lot #9422 were recovered: 1 safety pin.

Burial lot #9423 was located in area N with the coordinates in the NW corner of the coffin N239' E179'1". The elevation at the base of the coffin in the NW corner was 724.583 famsl. The 6 sided sub-adult coffin (22" x 9") contained the remains of 1 individual. The primary individual was face up with the head to the west facing east. The following grave goods for lot #9423 were recovered: glass vase(?).

Burial lot #9425 was located in area N with the coordinates in the NW corner of the coffin N244'3" E179'. The elevation at the base of the coffin in the NW corner was 724.453 famsl. The indeterminately sided (due to disturbance by trench) sub-adult coffin (29" x ?") contained the remains of 1 individual. The primary individual was placed indeterminately in the coffin with the head to the west facing east. The following grave goods for lot #9425 were recovered: 2 buttons.

Burial lot #9426 was located in area N with the coordinates in the NW corner of the coffin N247'1" E178'5". The elevation at the base of the coffin in the NW corner was 724.473 famsl. No remains or coffin were recovered due to disturbance by the trench. There were no grave goods recovered for lot #9426.

Burial lot #9427 was located in area N with the coordinates in the NW corner of the coffin N249'11" E179'5". The elevation at the base of the coffin in the NW corner was 724.543 famsl. The indeterminately sided sub-adult coffin (23" x 7") contained the remains of 1 individual. The primary individual was face up with the head to the west facing east. There were no grave goods recovered for lot #9427.

Burial lot #9429 was located in area N with the coordinates in the NW corner of the coffin N222'9" E173'2". The elevation at the base of the coffin in the NW corner was 724.613 famsl. The indeterminately sided sub-adult coffin (26" x 8") contained the remains of 1 individual. The primary individual was placed indeterminately in the coffin with the head to the west facing east. The following grave goods for lot #9429 were recovered: 1 safety pin

Burial lot #9430 was located in area N with the coordinates in the NW corner of the coffin N250'3" E143'9". The elevation at the base of the coffin in the NW corner was 724.573 famsl. The indeterminate sided sub-adult coffin (26" x 8") contained the remains of 1 individual. The primary individual was face up with the head to the west. The following grave goods for lot #9430 were recovered: fragments of cloth and four safety pins.

Burial lot #9431 was located in area N with the coordinates in the NW corner of the coffin N247'10" E174'4". The elevation at the base of the coffin in the NW corner was 724.603 famsl. The 4 sided sub-adult coffin (31" x 6") contained the remains of 1 individual. The primary individual was face up with the head to the west. The following grave goods for lot #9430 were recovered: one safety pin.

Burial lot #9432 was located in area N with the coordinates in the NW corner of the coffin N243' E1743". The elevation at the base of the coffin in the NW corner was 724.513 famsl. The 4 sided sub-adult coffin (26" x 10") contained the remains of 1 individual. The primary individual was face up with the head to the west. The following grave goods for lot #9432 were recovered: cloth fragments and four safety pins.

Burial lot #9433 was located in area N with the coordinates in the NW corner of the coffin N240'3" E173'10". The elevation at the base of the coffin in the NW corner was 724.603 famsl. The 6 sided sub-adult coffin (34" x 9.5") contained the remains of 1 individual. The primary individual position was indeterminate with the head to the west. The following grave goods for lot #9433 were recovered: a button and a small copper safety pin.

Burial lot #9434 was located in area N with the coordinates in the NW corner of the coffin N237'10" E173'10". The elevation at the base of the coffin in the NW corner was 724.643 famsl. The 6 sided sub-adult coffin (29" x 11") contained the remains of 1 individual. The primary individual was face up with the head to the west. The following grave goods for lot #9434 were recovered: four safety pins, two buckles, and one button.

Burial lot #9436 was located in area N with the coordinates in the NW corner of the coffin N243'1" E138'7". The elevation at the base of the coffin in the NW corner was 725.223 famsl. The 6 sided sub-adult coffin (19" x 8") contained the remains of 1 individual. The primary individual was placed indeterminately in the coffin. There were no grave goods recovered for lot #9436.

Burial lot #9437 was located in area N with the coordinates in the NW corner of the coffin N248'1" E168'2". The elevation at the base of the coffin in the NW corner was 725.043 famsl. The sub-adult coffin's type and dimensions are indeterminate and they contained the remains of one individual. The primary individual was placed indeterminately in the coffin. There were no grave goods recovered for lot #9437.

Burial lot #9440 was located in area N with the coordinates in the NW corner of the coffin N253' E163'9". The elevation at the base of the coffin in the NW corner was 725.123 famsl. The indeterminately sided sub-adult coffin (27" x 9") contained the remains of 1 individual. The primary individual was face up with the head to the west. The following grave goods for lot #9440 were recovered: two safety pins and two buttons.

Burial lot #9441 was located in area N with the coordinates in the NW corner of the coffin N250'10" E163'9". The elevation at the base of the coffin in the NW corner was 725.333 famsl. The 4 sided sub-adult coffin (22" x 8") contained the remains of 1 individual. The primary individual was placed indeterminately in the coffin. There were no grave goods recovered for lot #9441.

Burial lot #9442 was located in area N with the coordinates in the NW corner of the coffin N248'1" E164'. The elevation at the base of the coffin in the NW corner was 725.563 famsl. The 4 sided sub-adult coffin (28" x 7") contained the remains of 1 individual. The primary individual was face up with the head to the west. The following grave goods for lot #9442 were recovered: three safety pins and a fragment of cloth.

Burial lot #9443 was located in area N with the coordinates in the NW corner of the coffin N243'5" E164'3". The elevation at the base of the coffin in the NW corner was 725.773 famsl. The 4 sided sub-adult coffin (25" x 7") contained the remains of 1 individual. The primary individual was face up with the head to the west. The following grave goods for lot #9443 were recovered: one button.

Burial lot #9444 was located in area N with the coordinates in the NW corner of the coffin N243'9" E158'8". The elevation at the base of the coffin in the NW corner was 726.103 famsl. The 4 sided sub-adult coffin (27" x 8") contained the remains of 1 individual. The primary individual was face up with the head to the west. The following grave goods for lot #**** were recovered: one safety pin and one button.

Burial lot #9445 was located in area N with the coordinates in the NW corner of the coffin N248'6" E158'11". The elevation at the base of the coffin in the NW corner was 725.963 famsl. The 6 sided sub-adult coffin (24" x 8") contained the remains of 1 individual. The primary individual was face up with the head to the west. The following grave goods for lot #9445 were recovered: three buttons.

Burial lot #9446 was located in area N with the coordinates in the NW corner of the coffin N251' E159'6". The elevation at the base of the coffin in the NW corner was 725.883 famsl. The indeterminate sided sub-adult coffin (26" x 8") contained the remains of 1 individual. The primary individual was face up with the head to the west. The following grave goods for lot #9446 were recovered: one button.

Burial lot #9448 was located in area N with the coordinates in the NW corner of the coffin N250'7" E154'4". The elevation at the base of the coffin in the NW corner was 726.323 famsl. The 4 sided sub-adult coffin (30" x 8") contained the remains of 1 individual. The primary individual was placed indeterminately in the coffin with the head to the west. The following grave goods for lot #9448 were recovered: one button.

Burial lot #9449 was located in area N with the coordinates in the NW corner of the coffin N248'4" E154'3". The elevation at the base of the coffin in the NW corner was 726.463 famsl. The 4 sided sub-adult coffin (34" x 7") contained the remains of 1 individual. The primary individual was face up with the head to the west. The following grave goods for lot #**** were recovered: three buttons.

Burial lot #9450 was located in area N with the coordinates in the NW corner of the coffin N253' E154'4". The elevation at the base of the coffin in the NW corner was 726.333 famsl. The 6 sided sub-adult coffin (28" x 10") contained the remains of 1 individual. The primary individual was placed indeterminately with the head to the west. The following grave goods for lot #9450 were recovered: one safety pin.

Burial lot #9451 was located in area N with the coordinates in the NW corner of the coffin N243' E149'5". The elevation at the base of the coffin in the NW corner was 726.673 famsl. The 4 sided sub-adult coffin (18" x 8") contained the remains of 1 individual. The primary individual was face up with the head to the west. The following grave goods for lot #9451 were recovered: one safety pin.

Burial lot #9452 was located in area N with the coordinates in the NW corner of the coffin N247'7" E149'5". The elevation at the base of the coffin in the NW corner was 726.763 famsl. The 6 sided sub-adult coffin (26" x 10") contained the remains of 1 individual. The primary individual was face up with the head to the west. The following grave goods for lot #9452 were recovered: three safety pins, button micro-fragments.

Burial lot #9453 was located in area N with the coordinates in the NW corner of the coffin N249'10" E149'3". The elevation at the base of the coffin in the NW corner was 726.753 famsl. The indeterminately sided sub-adult coffin (25" x 8.5") contained the remains of 1 individual. The primary individual was placed indeterminately in the coffin with the head to the west facing east. The following grave goods for lot #9453 were recovered: 2 safety pins, 1 button.

Burial lot #9454 was located in area N with the coordinates in the NW corner of the coffin N251'10" E149'3". The elevation at the base of the coffin in the NW corner was 726.633 famsl. The 6 sided sub-adult coffin (31" x 9") contained the remains of 1 individual. The primary individual was face up with the head to the west facing east. The following grave goods for lot #9454 were recovered: 1 safety pin.

Burial lot #9456 was located in area N with the coordinates in the NW corner of the coffin N252' E129'4". The elevation at the base of the coffin in the NW corner was 728.193 famsl. The indeterminately sided sub-adult coffin (22" x 6") contained the remains of 1 individual. The primary individual was placed indeterminately in the coffin. There were no grave goods recovered for lot #9456.

Burial lot #9457 was located in area N with the coordinates in the NW corner of the coffin N250'6" E127'. The elevation at the base of the coffin in the NW corner was 728.313 famsl. The 4 sided sub-adult coffin (23" x 6") contained the remains of 1 individual. The primary individual was placed indeterminately in the coffin. There were no grave goods recovered for lot #9457.

Burial lot #9458 was located in area N with the coordinates in the NW corner of the coffin N247'6" E126'9". The elevation at the base of the coffin in the NW corner was 728.593 famsl. The 4 sided sub-adult coffin (24" x 4") contained the remains of 1 individual. The primary individual was placed indeterminately in the coffin with the head to the west facing east. There were no grave goods recovered for lot #9458.

Burial lot #9459 was located in area N with the coordinates in the NW corner of the coffin N241'10" E126'7". The elevation at the base of the coffin in the NW corner was 728.228 famsl. The indeterminately sided coffin (27" x 6") contained no remains due to heavy disturbance. There were no grave goods recovered for lot #9459.

Burial lot #9460 was located in area N with the coordinates in the NW corner of the coffin N239'3" E122'9". The elevation at the base of the coffin in the NW corner was 728.673 famsl. The 4 sided sub-adult coffin (24" x ?") contained the remains of 1 individual. The primary individual was placed indeterminately in the coffin with the head to the west facing east. There were no grave goods recovered for lot #9460.

Burial lot #9461 was located in area N with the coordinates in the NW corner of the coffin N246'10" E122'5". The elevation at the base of the coffin in the NW corner was 728.893 famsl. The indeterminately sided sub-adult coffin (24" x 8") contained the remains of 1 individual. The primary individual was face up with the head to the west facing east. There were no grave goods recovered for lot #9461.

Burial lot #9462 was located in area N with the coordinates in the NW corner of the coffin N249'4" E116'8". The elevation at the base of the coffin in the NW corner was 728.993 famsl. The 4 sided sub-adult coffin (23" x 8") contained the remains of 1 individual. The primary individual was face up with the head to the west facing east. The following grave goods for lot #9462 were recovered: 1 safety pin.

Burial lot #9463 was located in area N with the coordinates in the NW corner of the coffin N252'1" E122'4". The elevation at the base of the coffin in the NW corner was 728.853 famsl. The indeterminately sided sub-adult coffin (24" x 8") contained the remains of 1 individual. The primary individual was placed indeterminately in the coffin with the head to the east facing west. There were no grave goods recovered for lot #9463.

Burial lot #9464 was located in area N with the coordinates in the NW corner of the coffin N249'4" E118'6". The elevation at the base of the coffin in the NW corner was 729.253 famsl. The 4 sided sub-adult coffin (32.5" x 10") contained the remains of 1 individual. The primary individual was face up with the head to the west facing east. The following grave goods for lot #9464 were recovered: 2 buttons, 3 safety pins

Burial lot #9465 was located in area N with the coordinates in the NW corner of the coffin N246'10" E117'3". The elevation at the base of the coffin in the NW corner was 729.243 famsl. The 4 sided sub-adult coffin (? x 9") contained the remains of 1 individual. The primary individual was placed indeterminately in the coffin with the head to the west facing east. The following grave goods for lot #9465 were recovered: 3 safety pins, 3+ buttons, cloth.

Burial lot #9466 was located in area N with the coordinates in the NW corner of the coffin N241'9" E117'2". The elevation at the base of the coffin in the NW corner was 729.243 famsl. The sub-adult coffin's type and dimensions are indeterminate due to heavy compression by clay. It contained the remains of 1 individual. The primary individual was placed indeterminately with the head to the west facing east. The following grave goods for lot #9466 were recovered: 1 button.

Burial lot #9469 was located in area N with the coordinates in the NW corner of the coffin N247' E103'3". The elevation at the base of the coffin in the NW corner was 729.493 famsl. The 6 sided adult coffin (73" x 21") contained the remains of 1 individual. The primary individual was face up with the head to the west facing east. The following grave goods for lot #9469 were recovered: 2 safety pins, cloth.

Burial lot #9470 was located in area N with the coordinates in the NW corner of the coffin N241' E103'. The elevation at the base of the coffin in the NW corner was 729.543 famsl. The 6 sided adult coffin (72" x 23") contained the remains of 1 individual. The primary individual was face up with the head to the west facing south. The following grave goods for lot #9470 were recovered: 2 safety pins, leather.

Burial lot #9471 was located in area N with the coordinates in the NW corner of the coffin N241'5" E121'9". The elevation at the base of the coffin in the NW corner was 729.243 famsl. The 4 sided adult (adult bones in sub-adult coffin (18" x 6")) contained the remains of 1 individual. The primary individual was placed indeterminately in the coffin. There were no grave goods recovered for lot #9471.

APPENDIX VI

EXCAVATION AND INVENTORY FORMS

Great Lakes Archaeological Research Center, Inc.
Burial Excavation Record
MCIG Cemetery Site—GLARC Project 91-049

(circle area)

Burial No./Lot No. **91-049-** _____

Area **A B C D E F G H**

Photos
 Roll _____ Frames _____
 B/W Prints _____
 Color Slides _____

Grid locus you measure from:
 N _____ E / W _____
 (circle one)

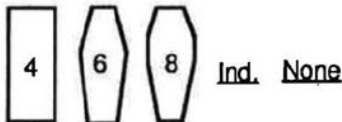
Recorder _____
Date _____

Elev. of NW corner of grave
 BOC _____ FAMSL _____

Burial Type

Extended _____
 Disturbed _____
 Other _____

Coffin shape
 (circle one)



Coffin Dimensions

Max. Length(in) _____ Direction _____
 Max. Width(in) _____ Direction _____

Grave Goods _____

Burial Type

Position _____
 Head to _____

Grave Type

Surface _____
 Coffin _____
 Other _____

Burial Pit Dimensions

Max. Length(in) _____ Direction _____
 Max. Width(in) _____ Direction _____

Associations _____

Associated Burial Pit Lot #(s) _____

Preservation

Poor _____ Fair _____ Good _____

Completeness _____

Sex

M _____ F _____ Ind. _____

Age

Infant _____
 Juvenile _____
 Adult _____

Comments (Obvious pathologies, disarticulations, missing elements, disturbances, etc.)

SEPARATE COMMENT RECORD ? YES NO

SUPERVISOR REVIEW

Burial Inventory Record

Milwaukee County Institution Grounds Pauper Cemetery Excavations
GLARC Project 91-049

Lot Inventory No.

91-049- _____

CRANIAL

Element	Quantity
Skull	
Mandible	

DENTITION

Location	Quantity		
	Normal	Denture	Gold
Maxilla			
Mandible			
Loose			

ASSOCIATED LOT #'S

MISC. ELEMENTS

TORSO

Element	Max. No.	Quantity
Right Clavicle	1	
Left Clavicle	1	
Right Scapula	1	
Left Scapula	1	
Vertebrae	24	
Ribs	24	
Sternum	1	

PELVIS

Element	Max. No.	Quantity
Left I nominate	1	
Right I nominate	1	
Sacrum	1	

POST-CRANIAL

Element	Max. No.	Quantity
Right Arm	3	
Left Arm	3	
Right Hand	27	
Left Hand	27	
Mixed Hand		
Right Leg*	4	
Left Leg*	4	
Right Foot	26	
Left Foot	26	
Mixed Feet		

* includes patella

ARTIFACTS

BURIAL FURNITURE

Item	Quantity
Coffin Wood	
Coffin Handle	
Nails	

Date pulled: _____

Name: _____

GRAVE GOODS

Item	Quantity
Finger ring	
Earring	
Crucifix	
Button	
Safety Pin	
Comb	
Footware	

COMMENTS

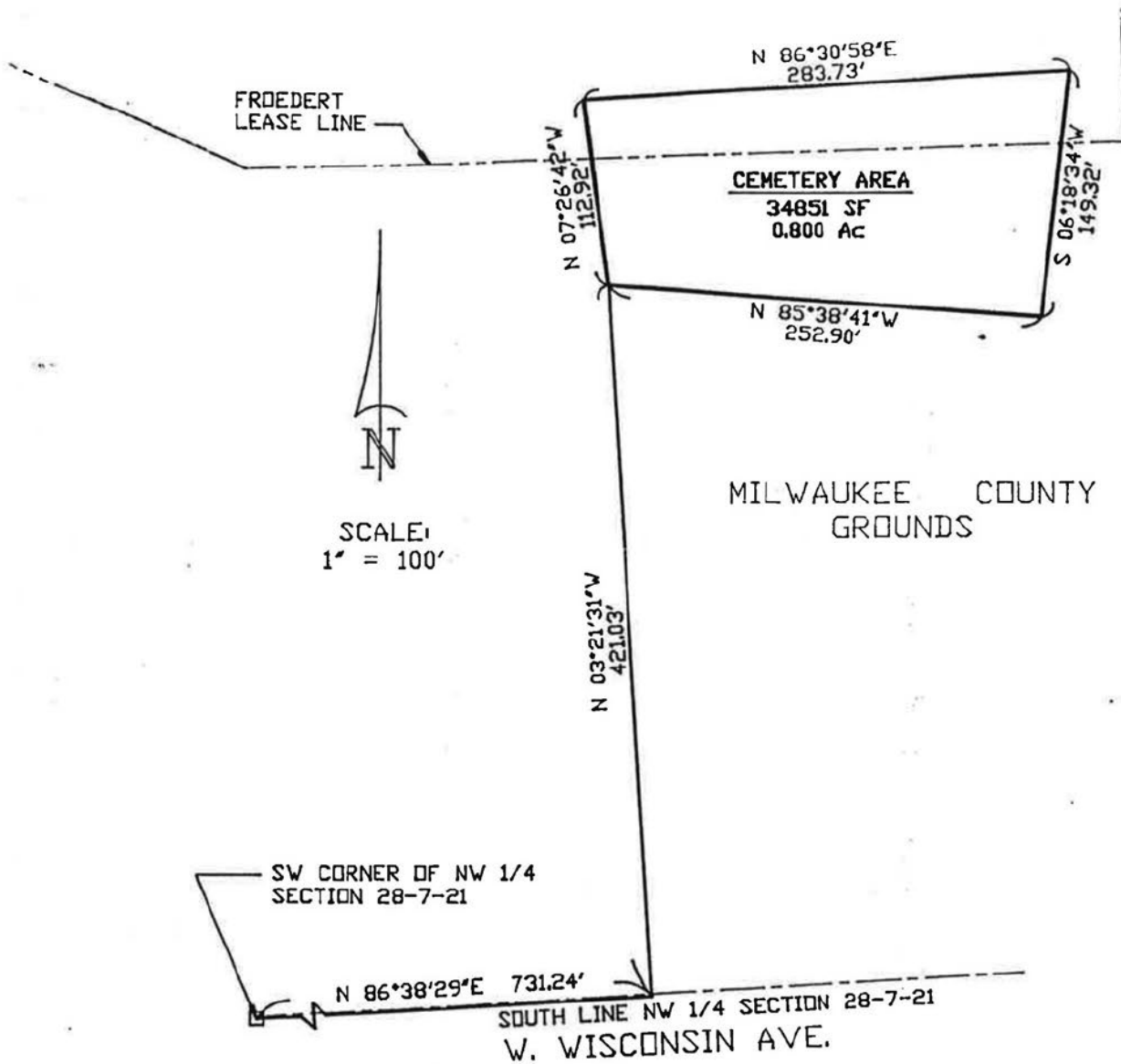
See over

Date Completed _____

Supervisor Review (Initials) _____

APPENDIX VII

**METES AND BOUNDS DESCRIPTION OF THE REMAINING INTACT
PORTION OF THE CEMETERY**

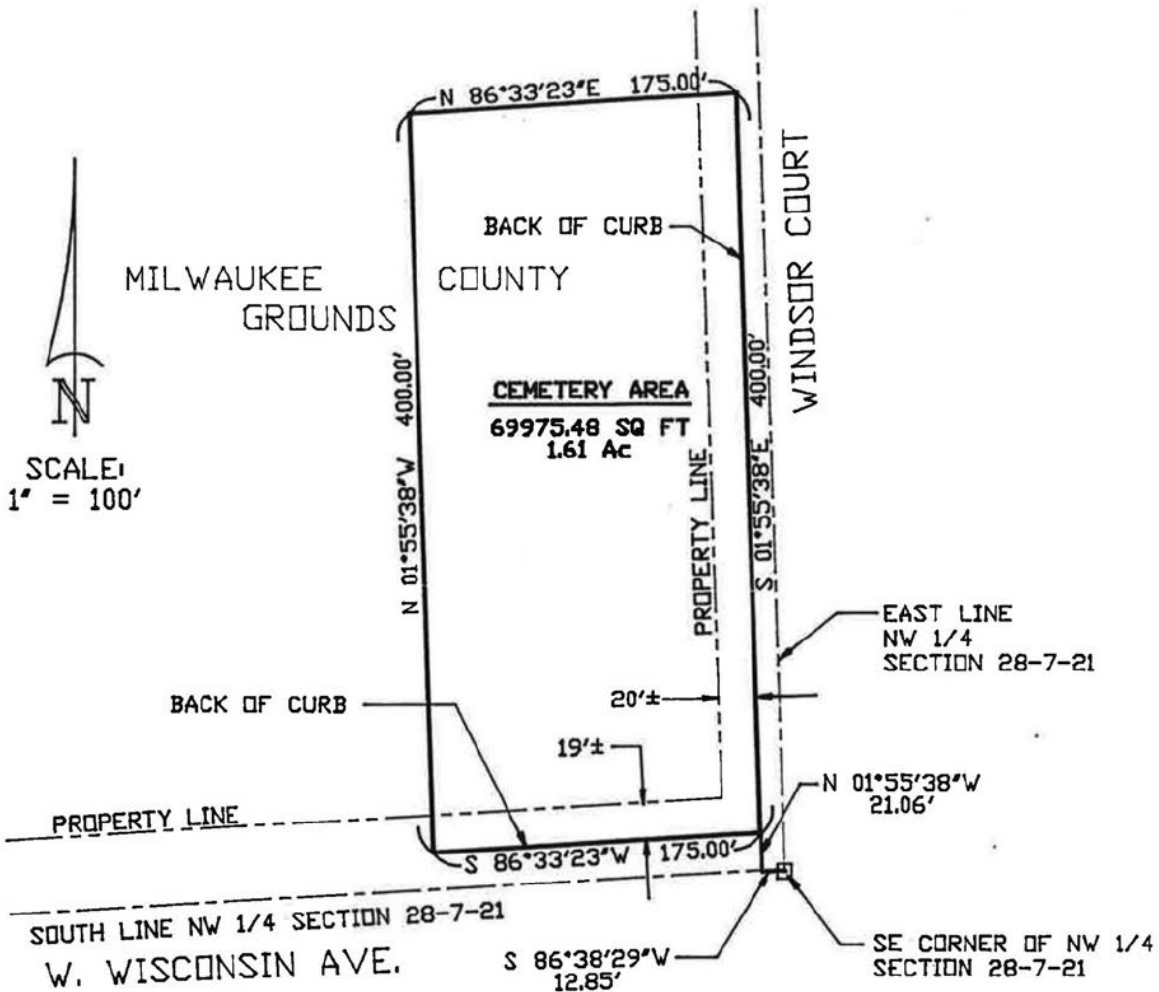


LEGAL DESCRIPTION

A parcel of land in the Northwest 1/4 of Section 28, Township 7 North, Range 21 East, in the City of Wauwatosa, Milwaukee County, State of Wisconsin, bounded and described as follows:

Commencing at the Southwest corner of said 1/4 Section, thence N 86°38'29" E for 731.24 feet along the South line of said 1/4 Section to a point; thence N 03°21'31" W for 421.03 feet to the point of beginning; thence N 07°26'42" W for 112.92 feet to a point; thence N 86°30'58" E for 283.73 feet to a point; thence S 06°18'34" W for 149.32 feet to a point; thence N 85°38'41" W for 252.90 feet to the point of beginning.

MILWAUKEE COUNTY DEPARTMENT OF PUBLIC WORKS/DEVELOPMENT		
PAUPER CEMETERY WITHIN MILWAUKEE COUNTY GROUNDS FROEDTERT HOSPITAL TRACT		
SCALE: 1" = 100'	DWN BY: KDS	DATE: JAN 22, '93



LEGAL DESCRIPTION

A parcel of land in the Northwest 1/4 of Section 28, Township 7 North, Range 21 East, in the City of Wauwatosa, Milwaukee County, State of Wisconsin, bounded and described as follows:

Commencing at the Southeast corner of said 1/4 Section, thence S 86°38'29" W for 12.85 feet along the South line of said 1/4 Section to a point; thence N 01°55'38" W for 21.06 feet to the point of beginning; thence S 86°33'23" W for 175.00 feet to a point; thence N 01°55'38" W for 400.00 feet to a point; thence N 86°33'23" E for 175.00 feet to a point; thence S 01°55'38" E for 400.00 feet to the point of beginning.

MILWAUKEE COUNTY DEPARTMENT OF PUBLIC WORKS/DEVELOPMENT		
PAUPER CEMETERY WITHIN MILWAUKEE COUNTY GROUND W. WISCONSIN AVE. & WINDSOR CT.		
SCALE: 1" = 100'	DWN BY: KDS	DATE: JAN 22, '93

APPENDIX VIII

**BIBLIOGRAPHY OF ARCHEOLOGICAL REPORTS
INFORMATION FOR DATA ENTRY**



Bibliography of Archeological Reports
Information for Data Entry

SHSW #: none County: Mi Acreage: 3.83

Author/s: Matthias W. Kastell and Patricia B. Richards

Title of Report: Archaeological Excavations at the Almshouse

Burial Ground, Milwaukee County Poorhouse, Wauwatosa,

Wisconsin

Date of Report (month and year): September 1993

Series/Number: GLARC Reports of Investigations No. 333

Place of Publication: Milwaukee, Wisconsin

Quad Map/s (7.5' Series): Wauwatosa

Legal description of survey area: NE,SE,SW,NW Sec. 28

T7N, R21E, City of Wauwatosa

Site Information (if applicable): none

State Codification Number/s: none

For Office Use Only:

Project Name: _____

Lead Agency: _____

THE STATE HISTORICAL SOCIETY OF WISCONSIN
816 State Street • Madison, Wisconsin 53706-1488

HP-05-07 (6-10-92)

