

Part IV: Summary and Conclusions

SUMMARY AND CONCLUSIONS

INTRODUCTION

From August of 1991 through November of 1992, Great Lakes Archaeological Research Center, Inc. conducted recovery operations at the Almshouse burial ground, Milwaukee County Poorhouse, on the Milwaukee County Institution Grounds, in Wauwatosa, Wisconsin. This cemetery, variously referred to as the "Poor Farm cemetery," the "Almshouse cemetery," the "Potter's Field," or the "Milwaukee County Pauper cemetery," is one of three locations on the Milwaukee County Institution Grounds (MCIG) used for the burial of human remains. The burial population represented by the interments at the cemetery include three subsets of deceased individuals: 1) persons dependent upon the County; 2) those sent from the coroner as unidentified; and 3) those whose families were unable or unwilling to provide burial elsewhere. The practice of burying paupers on the County Poor Farm began perhaps as early as 1853 and most probably by 1859. Interments continued through the transformation of the Poor Farm into the Milwaukee County Medical Complex. The last recorded burial at the MCIG Cemetery took place in 1974. After this time, the county began to contract with private funeral homes for burial of indigents.

Archaeological excavation of burials was conducted in specific impact localities associated with the construction of the Ambulatory Care Center and its related infrastructure including access roads, utilities corridors and a parking structure. Burials were recovered from three separate areas within the remnant cemetery. These included: 1) a small knoll just to the west of a former School of Nursing Residence (subsequently demolished for the construction of a parking structure); 2) the parking lot north of the nurses' residence; and 3) the lawn area situated south of the nurses' residence and north of three artificial ponds. Burials in the portion of the cemetery excavated spanned the period 1882 to 1925. Earlier and later burials were interred elsewhere on the County Grounds. Archaeological Excavation and remote sensing techniques documented the boundaries of the affected cemetery as well as the earlier cemetery on the Milwaukee County Institution Grounds. Metes and Bounds descriptions of both of these cemeteries have been provided to the State Historical Society of Wisconsin. Both these

cemeteries should, without a doubt, be preserved and noted as the final resting place of a segment of Milwaukee County's population who were an integral, but easily forgotten, part of the early development of the community. During the course of the archaeological excavations a total of 1649 burials were uncovered, documented and removed. Nine hundred of the recovered burials represent adult interments and 568 burials were identified as burials of subadults. Age at interment could not be determined for the remaining 76 burials.

SCOPE OF INVESTIGATIONS

A scope of work for the excavation and analysis of historic graves discovered at the Milwaukee County Medical Complex was provided by the Director of the State Historical Society of Wisconsin. According to the stipulations of that scope a completed report should include the following components: 1) historical research on the age, growth, and development of the affected portion of the cemetery; 2) excavation methodology used during the archaeological recovery operation; 3) a detailed site map; 4) description and analyses of any objects associated with the burials; 5) various analyses of the skeletal population, and 6) appendices containing copies of field notes and black and white photographs of each burial exposed *in situ*. Our analyses were primarily directed toward fulfillment of the stipulated scope of work. However, we were conscious also of the need to recover as much additional information as possible given the constraints imposed by conflicts of schedule, weather, and costs. Ultimately, we believe that the results of the archaeological investigations far exceed the demands of the scope or the various expectations of the professional community. The following discussion is directed toward each point of the promulgated scope.

Point 1

With regard to historical documentation, the pattern of land use characteristic of the MCIG Cemetery was reconstructed based on two different yet related types of evidence. First, archaeological evidence in the form of post molds, regularly arranged graves, and recovered grave goods provided basic spatial data. Second, historical documentation in the form of early maps, death certificates and the burial register allowed for identification of land use patterns, and, for some areas of the cemetery, identification of individuals. The spatial arrangement of the undisturbed burials within the excavated portion of the cemetery suggests an

orderly arrangement of burials in rows and columns. Both the post molds representing fence lines and the burial patterns suggest that the cemetery shape and size had changed between 1882 and 1925; apparently new sections were added to the original burial area.

Point 2

Recovery methods have been previously detailed (see the section on excavation methodology, this report). We believe the results of the investigations support the methodological soundness and overall adequacy of the archaeological techniques employed.

Point 3

Plan maps of the archaeological excavations were compiled from plane table and transit data collected in the field. Hand drawn distribution maps were produced for each excavated portion of the cemetery. Completed maps were then digitized and computer generated distribution maps were compiled to illustrate varying types of spatial information.

Point 4

The analysis of items recovered from burials, burial pits, and undifferentiated fill provides a variety of insights into the nature of the population interred in the MCIG Cemetery. A primary concern from the onset of the MCIG excavation was whether named individuals listed in the Burial Ledger could be associated with any of the recovered burials. Despite the existence of the Burial Ledger, both the lack of grave markers and the sheer number of individuals excavated seemed to preclude the possibility of correlating names with specific archaeological grave locations. However, a unique combination of data sets and careful recovery procedures made possible identification of the burial locations of 190 individuals listed in the Burial Ledger.

The grave goods recovered from burials at the MCIG Cemetery reflect the nature of the burial population of the cemetery. Those interred in the MCIG Cemetery represent three distinct groups of individuals. The first and most numerous group is comprised of individuals who died as residents of one of the Milwaukee County Institutions. The second most frequent group of individuals are those sent to the MCIG Cemetery via the Coroner's Office and who remained unidentified and unclaimed by relatives. The last group is comprised of those

whose families were unable to provide a funeral and who were buried at the expense of Milwaukee County. The distribution of these three categories of individuals as reflected by recovered grave goods appears to be random through the MCIG Cemetery. This distribution suggests that whomever was contracted to perform burials for Milwaukee County was responsible for burial of all three of the separate populations of individuals buried in the MCIG Cemetery.

Distribution maps of the types of coffin handles recovered from the MCIG Cemetery were produced in an effort to elucidate patterns of cemetery use. Results suggest that the collection of the handles recovered from the MCIG Cemetery represents the most inexpensive hardware available at the time the cemetery was utilized. Since many of these handles have overlapping time spans, mapped distributions are poor indicators of temporal variation. However, differential distribution of coffin handles does suggest that differing portions of the cemetery were serviced by different coffin manufacturers. Finally, coffins and coffin hardware recovered from the MCIG Cemetery represents a fairly homogeneous assemblage reflecting the limited temporal span of the cemetery and the nature of the population interred in the cemetery.

A computerized database was developed to systematize the various data sets recovered during the course of fieldwork and laboratory analysis associated with the archaeological recovery of portions of the MCIG Cemetery. Four considerations guided choice of an appropriate database manager and development of the final design. First, the database needed to be capable of handling very large data sets of related but sometimes quite disparate information. Second, data entry was required to be straightforward and easily learned in order to accommodate the varying skill levels of an ever-changing cadre of data entry personnel. Third, database structure had to be flexible enough to respond to changing research needs as the analysis progressed. Fourth, the potentially large number of entries required that the database be compatible with a multi-user data entry system. Finally, the design should include information useful to future researchers conducting additional studies of both archaeological materials and biological analyses.

The database manager chosen is a relational database engine published by Helix Technologies. Helix Express™ is a true multi-user platform offering form-based data entry, record-locking, referential integrity and virtually unlimited

record capacity. Helix Express™ is based on a unique icon-driven approach to database construction and manipulation. The program supports the Macintosh™ operating system and is not currently available on IBM compatible platforms. However, data can be exported in a variety of formats including ASCII, DBase, DIF, and SYLK file types.

Point 5

Osteological analyses and biological studies of the skeletal population is being conducted by Dr. Norman Sullivan of Marquette University. Dr. Sullivan is Principal Investigator for this portion of the project. Results of the osteological analysis will be reported separately from the present report.

Point 6

Completed excavation forms and copies of black and white photographs of 1649 burials were not practical to include as part of the appendices volume of this report; however, a set of completed forms and photographs is being forwarded directly to the State Historical Society of Wisconsin.

CONCLUSIONS

Archaeological investigations at the MCIG Cemetery produced an enormous amount of data relating to late 19th and early 20th Century public and institutional response to the needs of indigents and poor. Our preliminary analysis suggests that the MCIG Cemetery can be viewed from several different functional perspectives. First, the cemetery served as a convenient burial ground for the inmates or residents of various County institutions. Second, the cemetery also functioned as a disposal facility for unidentified or unclaimed dead processed through the Coroner's Office. Third, the site provided a recognized cemetery facility for persons of limited means.

Among the many avenues of inquiry opened by the MCIG excavations two are particularly compelling. First, the MCIG data set provides an opportunity to rigorously test a variety of widely held assumptions regarding the relationship between mortuary programs, social organization and corporate structures. For example, differential status in life is usually reflected to some degree by differential treatment at death. Unfortunately, the specifics of this relationship are often obscured by variations in societal attitudes, specific technological practices, or differential preservation. However, with few exceptions, the

individuals interred in the MCIG Cemetery shared the same status; status can thus be treated as a virtual constant. Consequently, apparent differences in individual burial programs must be due to other than status-driven processes.

Second, the MCIG data set should allow investigation of the degree to which facilities such as the MCIG Cemetery mirrored societal attitudes and cultural norms regarding treatment of society's less fortunate members. In concept and in practice, the MCIG Cemetery is reflective of late 19th Century attitudes toward the poor and indigent. As such, the data generated by the archaeological excavations offers an unparalleled opportunity to explicate changing patterns of institutional responses to the collective needs of the members of a variety of basically disenfranchised segments of society. Conversely, it is also the case that many of the societal attitudes embodied in the concept of a facility like the MCIG Cemetery have not changed markedly since the first interment was conducted on the County grounds. Witness, for example, New York City's continuing practice of burying indigents, wards of the state, and unidentified individuals at the City's ossuary-like Long Island pauper cemetery. Thus, in addition to explicating change, analysis of the MCIG data set may in fact help to illuminate continuities in societal attitudes and institutional poses relative to treatment of the poor and indigent.

The individuals buried in the MCIG Cemetery were poorly used in life and ill-treated even in death. Thus, in a very real sense, the analysis and interpretation of the MCIG data set represents something of a tribute to the memory of this poorly documented and easily forgotten segment of Milwaukee's population. Perhaps the results of the MCIG studies will provide some small impetus for reevaluating current attitudes and practices regarding societal responsibility toward the indigent. If so, the population represented by the MCIG burials may in death have a collective impact far greater than that accorded them during life.

Part V: References

REFERENCES CITED

Avella, Steven M.

1987 Health, Hospitals, and Welfare: Human Services in Milwaukee County. In *Trading Post to Metropolis • Milwaukee County's First 150 Years*, edited by Ralph M. Aderman, pp. 196-254. Milwaukee County Historical Society

Belden, H.

1876 *Illustrated Historical Atlas of Milwaukee County*. H. Belden & Co., Chicago.

Bruhy, Mark E. and David F. Overstreet

1980 *Phase I Investigation of Five Proposed Diversion Structures, April 1980 Addendum*. Report submitted to Milwaukee Metropolitan Sewerage District, copy on file at Historic preservation Division, State Historical Society of Wisconsin.

Belden, H. and Company

1876 *Illustrated Historical Atlas of Milwaukee County*.

Bruce, William George, editor

1922 *History of Milwaukee City and County*. S. J. Clarke Publishing Co., Chicago.

Drew, Susan M.

1924-26 *The Milwaukee County Institutions and Departments • A History*. ms. on file with Milwaukee County Institutions Administration Office.

Elia, Ricardo J. and Al B. Wesolowsky (editors)

1991 *Archaeological Excavations at the Uxbridge Almshouse Burial Ground in Uxbridge Massachusetts*. BAR International Series 564.

Garrow, Patrick H.

1987 A Preliminary Seriation of Coffin Hardware Forms in Late Nineteenth and Early Twentieth Century Georgia. Paper presented at the Annual Meeting of the Eastern States Archaeological Federation, Charleston, South Carolina.

Hacker-Norton, Debi and Michael Trinkley

1984 *Remember Man Thou Art Dust: Coffin Hardware of the Early Twentieth Century*. Research Series 2, Chicora Foundation, Inc. Columbia, S.C.

Hasluck, Paul N., editor

1905 *Mechanics' Manuals: Coffin Making and Undertaking*. Cassell & Company, Limited, London.

Heimmer, Don H.

1992 *Near-Surface High Resolution Geophysical Methods for Cultural Resource Management and Archaeological Investigations*. Interagency Archeological Services, Rocky Mountain Regional Office, National Park Service, Denver, Colorado.

Howard, Hugh

1989 *How Old is this House?*. The Noonday Press, New York.

Milwaukee County Employees' Association

1923 *Annals of Milwaukee County*

Milwaukee Daily Sentinel

1853 Report of the County Board of Supervisors. Dec. 10, 2/5

1855 Meeting for the Relief of the Poor. Feb. 15, 2/3

1856 The Poor House and Alms House Expenses. May 28, 2/2

Milwaukee Sentinel

1865 Our Poor County House. Nov. 9, 1/5

1865 The County Poor. Nov. 15, 1/6

1866 Visit to the County Poor House. May 16, 1/3

1867 The County Poor House. Jan. 24, 1/3

1868 Visit of the Board of Supervisors to the County Poor House - A Look at the Institution. Sept. 30, 1/3

1869 County Government. Jan. 12, 1/4

1869 Our Poor Department. Jan. 13, 1/5

1873 "Brevities". Dec. 3, 8/3

1874 Some Reminiscences About the Burying Places of Milwaukee. Apr. 30,
3/3

1876 Brevities. Feb. 14, 5/1

1876 The Pesthouse Business. Aug. 2, 2/1

- 1877 Suggestions About the Treatment of the Insane at the Poor Farm. Apr. 5, 8/3
- 1878 Brevities. Feb. 21, 8/3
- 1878 Coffin Contract. Feb. 23, 8/2
- 1878 Almshouse Property. June 18, 2/4
- 1879 General Notes. Mar. 1, 2/5
- 1879 General Notes. Oct. 11, 8/2
- 1880 The Insane Asylum. Feb. 24, 8/4
- 1881 Dr. Wright's Department. Jan. 25, 8/2
- 1881 Local Brevities. Feb. 23, 8/2
- 1881 Local Brevities. Aug. 12, 5/4
- 1882 Sketches of the Poor Unfortunates at the Insane Asylum. Aug. 27, 5/5
- 1882 In the Potter's Field. Dec. 24, 11/1
- 1884 To the County Board of Milwaukee County: Mar. 29, 9/2-4
- 1884 County Supervisors. July 16, 3/3
- 1885 Board of Supervisors. Annual Report. Jan. 22, 7/2
- 1885 Running a Big Farm. July 1, 7/4
- 1887 Annual Report of Poor Farm. Jan. 20, 3/3
- 1887 Jan. 24, 3/3
- 1888 With Little Ceremony. May 11, 3/2

Milwaukee Metropolitan Sewerage District Archives
1930(?) W.P.A. map, Section 28, T. 7 N., R. 21 E.

Milwaukee Writer's Project
1947 History of Milwaukee County

Overstreet, David F., and Keith A. Sverdrup

1992 *Archaeological and Remote Sensing Investigations at the Froedtert Hospital Tract, Milwaukee County Medical Complex, Milwaukee County, Wisconsin.* Great Lakes Archaeological Research Center, Inc., Reports of Investigations No. 310. Milwaukee.

1992 *Archaeology and Remote Sensing Investigations at Windsor Drive and Wisconsin Avenue, Milwaukee County Medical Complex, Milwaukee County, WI.* Great Lakes Archaeological Research Center, Inc., Reports of Investigations No. 312. Milwaukee

Saxe, Arthur Alan

1970 *Social Dimensions of Mortuary Practices.* Ph.D. dissertation, University of Michigan, Department of Anthropology, Ann Arbor.

the 1990s, the number of people in the world who are under 15 years of age has increased from 1.1 billion to 1.3 billion. The number of people aged 15 and over has increased from 3.5 billion to 4.5 billion. The total population of the world has increased from 4.6 billion to 5.8 billion.

As a result of the increase in the number of people in the world, the number of people in the labour force has also increased. The number of people in the labour force has increased from 1.5 billion in 1990 to 2.5 billion in 2000. The number of people in the labour force is expected to increase to 3.5 billion by 2010.

The increase in the number of people in the labour force has led to a decrease in the number of people in the agricultural sector. The number of people in the agricultural sector has decreased from 1.1 billion in 1990 to 0.8 billion in 2000. The number of people in the agricultural sector is expected to decrease to 0.5 billion by 2010.

The decrease in the number of people in the agricultural sector has led to a decrease in the number of people in the manufacturing sector. The number of people in the manufacturing sector has decreased from 0.8 billion in 1990 to 0.6 billion in 2000. The number of people in the manufacturing sector is expected to decrease to 0.4 billion by 2010.

The decrease in the number of people in the manufacturing sector has led to a decrease in the number of people in the service sector. The number of people in the service sector has decreased from 0.6 billion in 1990 to 0.4 billion in 2000. The number of people in the service sector is expected to decrease to 0.2 billion by 2010.

The decrease in the number of people in the service sector has led to a decrease in the number of people in the public sector. The number of people in the public sector has decreased from 0.4 billion in 1990 to 0.2 billion in 2000. The number of people in the public sector is expected to decrease to 0.1 billion by 2010.

The decrease in the number of people in the public sector has led to a decrease in the number of people in the private sector. The number of people in the private sector has decreased from 0.2 billion in 1990 to 0.1 billion in 2000. The number of people in the private sector is expected to decrease to 0.05 billion by 2010.

The decrease in the number of people in the private sector has led to a decrease in the number of people in the informal sector. The number of people in the informal sector has decreased from 0.1 billion in 1990 to 0.05 billion in 2000. The number of people in the informal sector is expected to decrease to 0.02 billion by 2010.

Library Copy

GREAT LAKES



ARCHAEOLOGICAL

RESEARCH CENTER

Reports of Investigation No. 333

Archaeological Excavations
at the Almshouse Burial Ground
Milwaukee County Poorhouse
Wauwatosa, Wisconsin

Volume 2: Appendices

*Great Lakes Archaeological Research Center, Inc.
Milwaukee, Wisconsin*

Part VI: Appendices

APPENDIX I
PROJECT CORRESPONDENCE



THE STATE HISTORICAL SOCIETY OF WISCONSIN

H. Nicholas Muller III, Director

816 State Street
Madison, Wisconsin 53706
608/262-3266

August 30, 1991

Mr. Sigmund J. Tomkalski
Associate Administrator
Hospital Services
Milwaukee County Medical Complex
8700 West Wisconsin Avenue
Milwaukee, Wisconsin 53226

Dear Mr. Tomkalski:

I have received your letter of August 28, 1991 requesting permission to remove the uncataloged burials discovered in the proposed roadway of your ambulatory care center project. Given the present state of construction, I understand that this project cannot be completely redesigned to avoid the burial area. Therefore, I, reluctantly grant permission to excavate and analyze these human remains as per s. 157.70(4)(3)(a).

Limited testing by our staff indicates that there could be between 150-200 grave plots in the current project area and local informants suggest there may be more than one burial per plot. As explained to you by Mr. Dexter and Ms. Holliday, our Burial Sites staff cannot undertake a project of this size within your time constraints. Therefore, if you wish to proceed expeditiously, you will have to hire a qualified archeologist to excavate and analyze these remains. I have enclosed a scope-of-work on which contract archeologists may base their bids. Upon receipt of a signed contract between the County and a qualified archeologist, I shall give authorization to disturb these burials.

In closing, I must note that while I understand the difficulties in avoiding the disturbance of burials at this stage of the project, I cannot understand how this project progressed to this point without anticipation of the present problem. Several previous construction projects in this area have disturbed human graves and, it is apparently common knowledge among some

Mr. Sigmund J. Tomkalski - 2

August 30, 1991

county staff that this area had been used as a pauper's cemetery. To avoid future situations like this one, I strongly advise that, with the assistance of historians and archeologists, you define the limits of this pauper cemetery which certainly extend beyond the limits of this present proposed roadway. The fact that these burials represent Milwaukee's indigents does not mean that they deserve any less of our respect. I look forward to receiving the results of this research.

Sincerely,

Nick Muller
H. Nicholas Muller III (dad)
Director

enclosure

**Scope of Work for the Excavation and Analysis
of Historic Graves Discovered at the Milwaukee County Medical Complex**

1. A qualified archeologist as per s. 157.70(1)(i) and HS 2.04(6)(a) shall oversee and direct the excavation of all human remains and all work shall be conducted according to the guidelines of the Wisconsin Archaeological Survey.
2. The archeologist shall locate all in situ burials within the project area and also define the limits of any areas disturbed by previous construction work within the project area and produce a plan map of same.
3. The fill down to the level of the human remains and coffin fragments may be removed by mechanized equipment but the excavation of the remains themselves shall be undertaken by hand. Each burial and all objects related to the burial, such as coffin hardware, jewelry, and remnants of clothing shall be exposed in situ and photographed in black and white prints and color slides prior to removal.
4. All backdirt piles presently within the project area and the backdirt piles presently placed along the edges of the parking lot to the west of the project area must be screened through 1/4" mesh for human remains and coffin hardware.
5. A schedule for the timely analysis of the remains and preparation of a final report shall be negotiated with the State Historical Society Burial Office once the total number of burials is determined.
6. During the period of analysis, all remains will be stored in secured areas.
7. Upon completion of the excavation and analysis, the archeologist shall submit three copies of a report to the Director of the State Historical Society including:
 - a. historical research on the age, growth, and development of this portion of this cemetery
 - b. excavation methodology
 - c. site map
 - d. descriptions and analyses of any objects associated with the burials
 - e. inventory, description and macroscopic analyses of the skeletal remains by a qualified skeletal analyst as per s. 157.70(1)(i) and HS 2.04(6)(6). Skeletal analysis of each burial shall minimally include estimation of age, sex, population affiliation, and stature based on standard metric and morphological observations, descriptions and diagnoses of any pathological conditions, including degenerative changes and dental health, and the standard cranial and postcranial measurements and skeletal discrete traits as recommended by the Paleopathology Association Skeletal Database Committee. Skeletal remains recovered from backdirt piles from the south end of the property should be matched, if possible, to the partially disturbed burials at the south end of the property. The analysis of disturbed human remains which cannot be assigned to individual burials shall include an

estimate of the minimum number of individuals represented, estimates of age, sex, and stature, if possible, and descriptions and diagnoses of any pathological conditions noted.

- f. photographs of the different types of pathological conditions noted in this population
 - g. general conclusions on the burial practices and health status of the population at this institution
 - h. appendices including copies of field notes, black and white photographs of each burial as exposed in situ as well as notable pathological conditions, and the completed skeletal analysis forms used for each burial. (If the contracting archaeologist does not have adequate skeletal analysis forms, these can be provided by the Burial Sites Office.)
8. After the submission of a satisfactory report, all remains will be transferred to and curated by the State Historical Society until the Director makes a decision on the disposition of the remains.



THE STATE HISTORICAL SOCIETY OF WISCONSIN

H. Nicholas Muller III, Director

816 State Street
Madison, Wisconsin 53706
608/262-3266

October 17, 1991

Mr. Sigmund J. Tomkalski, Associate Administrator
Hospital Services
Milwaukee County Medical Complex
8700 West Wisconsin Avenue
Milwaukee, Wisconsin 53226

Dear Mr. Tomkalski:

I wish to briefly summarize the points made during our meeting last Thursday, October 10, concerning the pauper's cemetery discovered on the County Medical Complex property. First, I wish to reiterate that permission to disturb burials has only been granted for those burials located within the project area of the new ambulatory care facility and associated roadway. If the county wishes to disturb additional burials outside of the specific project area, they will have to make a separate application.

Secondly, given that Dr. Overstreet's staff has located a 1930's map of this cemetery's boundaries, we wish to catalog the remaining undisturbed areas of this burial site. To accomplish this task, please have a land surveyor reestablish these cemetery boundaries (as platted in the 1930's) and then produce a metes and bounds description of the cemetery excluding the disturbed land beneath the School of Nursing building and areas that have been or will be disturbed by the ambulatory care center and associated roadway.

If Milwaukee County wishes to disturb additional burials within this cataloged cemetery, you must write a letter to Dr. H. Nicholas Muller III, Director of the State Historical Society of Wisconsin, 816 State Street, Madison, Wisconsin 53706, and request permission to disturb a cataloged burial site. To speed this process, please send us a copy of the ledger with the names of persons interred in this cemetery, as we must attempt to locate people with an interest in these burials as soon as possible.

Mr. Sigmund J. Tomkalski - Page 2

October 17, 1991

Finally, I would like to suggest that the County provide us with a metes and bounds description of the fenced county cemetery located north of Watertown Plank Road and strongly suggest that an effort be made to define the boundaries of a third cemetery area labeled "2" on the enclosed map from Dr. Overstreet's 1984 report, Archaeological Investigations at the Milwaukee County Institution's Grounds - CT1-E.

If you have any questions, please call me at (608)264-6503.

Sincerely,

Diane Young Holliday
Program Coordinator
Burial Sites Preservation

enclosure

✓ cc: Dr. David Overstreet



MILWAUKEE COUNTY
MEDICAL COMPLEX

8700 West Wisconsin Avenue

Milwaukee, WI 53226

414-257-7900, TTY 257-5774

June 15, 1992

Ms. Diane Holliday
Program Coordinator
Burial Sites Preservation Office
State Historical Society of Wisconsin
816 State Street
Madison, Wisconsin 53706

Dear Ms. Holliday:

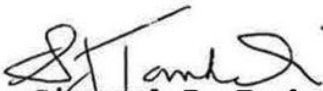
In further coordination with our construction manager for the Ambulatory Care Center project, it was determined last week that a small area near the intersection of the current and projected road on the west side had to be excavated. It technically was on the western edge of a projected boundary limit for the undocumented cemetery. Dr. Overstreet and his staff proceeded to identify this specific area, which again was very small, and coordinated verbally with your office to receive approval.

In review of prior communication and approvals, it would appear that this area is located within the project area of the new Ambulatory Care Center and included in the associated roadway area. We are formally communicating after Dr. Overstreet had secured your consideration and verbal approval to excavate and remove whatever human remains existed in this small area. I have attached a written communication and map from Dr. Overstreet.

Ms. Diane Holliday
June 15, 1992
Page 2

Thank you for accepting Dr. Overstreet's request and providing verbal concurrence and authorization with him. Your continued monitoring and assistance is appreciated.

Sincerely,



Sigmund J. Tomkalski
Associate Hospital Administrator
Hospital Services

SJT/ts

Attachment

cc: ✓ David F. Overstreet, Ph.D.
William Stenavich



THE STATE HISTORICAL SOCIETY OF WISCONSIN

H. Nicholas Muller III, Director

816 State Street
Madison, Wisconsin 53706
608/262-3266

June 29, 1992

Mr. Sigmund Tomkalski
Associate Hospital Administrator
Hospital Services
Milwaukee County Medical Complex
8700 West Wisconsin Avenue
Milwaukee, WI 53226

Dear Mr. Tomkalski:

I have received your request to disturb approximately 15 human burials within the small triangular area indicated on the attached map. It is my understanding that it is necessary to disturb this small area, in addition to the area I have already authorized, in order to safely complete the new roadway associated with the Ambulatory Care Center and parking structure. Accordingly, I authorize the removal of these remains.

In a telephone conversation with Ms. Diane Holliday on June 24, 1992, you inquired if intact burials found immediately adjacent to the south side of the nursing school should have a different treatment than other burials discovered during the course of this project. This question apparently stems from comments made during our meeting on November 13, 1991, during which it was noted that the County probably did not have to worry about any intact burials adjacent to the nursing school building. This comment simply meant to convey the opinion that there would probably not be any intact burials adjacent to the building as we assumed any graves close to this structure would have been disturbed during construction. From your conversation with Ms. Holliday, I understand that this assumption was incorrect and that there are, in fact, burials up to the building's foundation on the south side. As these burials are clearly within the construction zone for the proposed parking structure, these burials, too, may also be removed through standard archeological methods, previously approved.

In a related matter, I understand that there is only a half basement under portions of the nursing school building and, given the original slope of the land in this area, there may be burials under the half basement. I expect that you are planning sufficient time for the archeologists to investigate this area.

Finally, I would like to renew our request for a copy of the ledger listing the names of those

Tomkalski - pg 2

buried on the Milwaukee County Hospital grounds. This will enable the Burial Sites Program to evaluate future requests from persons who wished to be placed on the registry of interested persons under the category of direct kinship.

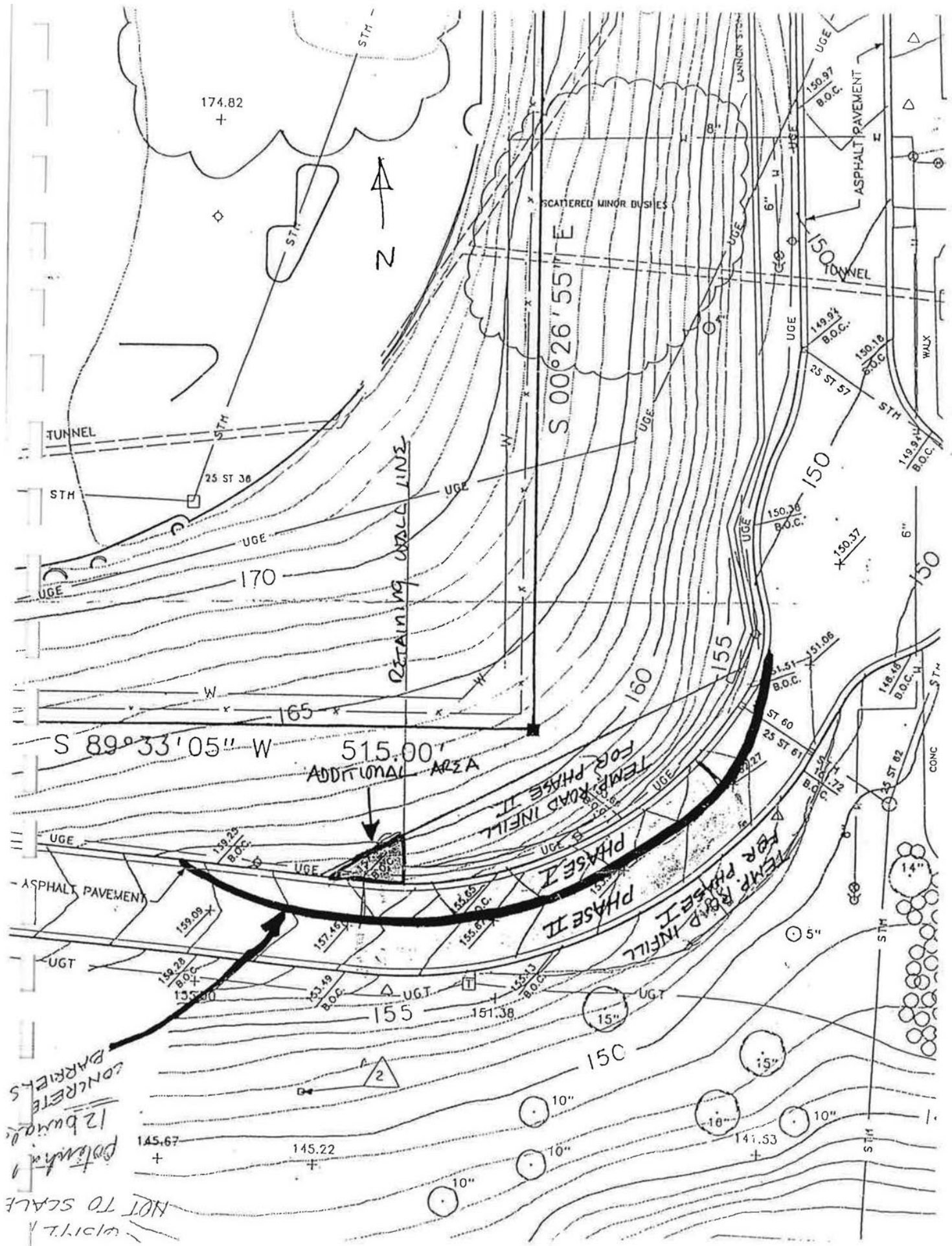
If you have any questions, please call either Diane Holliday at 608-264-6503 or me at 608-264-6441.

Sincerely,



H. Nicholas Muller III
Director

✓ cc David Overstreet



NOT TO SCALE
 WITH
 12 bars
 concrete
 barriers

515.00'
 ADDITIONAL AREA

TEMP. ROAD INFILL
 FOR PHASE I
 PHASE II

RETAINING WALL LINE

S 00°26'55" E

S 89°33'05" W

145.67 +

145.22 +

141.53 +

174.82 +

150.97 B.O.C.

149.94 B.O.C.

150.18 B.O.C.

150.36 B.O.C.

150.37

151.08 B.O.C.

148.48 B.O.C.

147.72 B.O.C.

155.87 B.O.C.

155.87 B.O.C.

151.38

159.09

158.28 B.O.C.

133.80

157.49 B.O.C.

155.87 B.O.C.

15" UG.T.

15" UG.T.

10" UG.T.

10" UG.T.

10" UG.T.

10" UG.T.

5" UG.T.

5" UG.T.

5" UG.T.

5" UG.T.

5" UG.T.

5" UG.T.

5" UG.T.

5" UG.T.

5" UG.T.

5" UG.T.

6" UG.T.

6" UG.T.

6" UG.T.

6" UG.T.

6" UG.T.

6" UG.T.

6" UG.T.

6" UG.T.

6" UG.T.

6" UG.T.

6" UG.T.

6" UG.T.

6" UG.T.

6" UG.T.

6" UG.T.

6" UG.T.

6" UG.T.

6" UG.T.

6" UG.T.

6" UG.T.

6" UG.T.

6" UG.T.

6" UG.T.



MILWAUKEE COUNTY
MEDICAL COMPLEX

8700 West Wisconsin Avenue

Milwaukee, WI 53226

414-257-5936

M. Julie Hanser
Hospital Administrator

July 22, 1992

David F. Overstreet, Ph.D.
President
Great Lakes Archaeological
Research Center
P.O. Box 17767
Milwaukee, Wisconsin 53217

Dear Dr. Overstreet:

There have been periodic status reports from the Administrative Staff on the major project of the pauper cemetery and the removal of graves from the area in order to accommodate the construction of our new Ambulatory Care Center. It has been brought to my attention that you have initiated an effort in collaboration with Marquette University and Dr. Norman Sullivan to address the requirement for analysis of the human remains. This initiative is very exciting from a research and financial perspective.

We appreciate your interest and effort to assist us in developing a plan to support the required analysis of the human remains. Thank you for your concern and interest in our behalf.

Sincerely,

Julie Hanser, FACHE
Hospital Administrator

JH/SJT/ts

cc: Sigmund J. Tomkalski

To: Dr. Overstreet

FEB 2 1993

COUNTY OF MILWAUKEE
INTER-OFFICE COMMUNICATION

DATE : February 1, 1993
TO : Sigmund J. Tomkalski, Associate Administrator,
Hospital Services, MCMC
FROM : William Heinemann, Deputy Director, DPW/D *WH*
SUBJECT : CEMETERY SITES - DRAFT REPORTS ON ARCHAEOLOGICAL AND
REMOTE SENSING INVESTIGATIONS FROM GREAT LAKES
ARCHAEOLOGICAL RESEARCH CENTER, INC.

We have reviewed the subject reports involving Milwaukee County Medical Complex Grounds and environs and offer the following comments:

REPORT NO. 312

Location: NE corner of intersection at Windsor Ct. and Wisconsin Ave.

- It appears as though the Consultant has provided sufficient documentation of the procedures employed and the data collected.
- It appears that the Consultant has analyzed the data and adequately described the resultant conclusions and recommendations to allow development and implementation of appropriate policies regarding the cemetery issue.
- Sufficient detail has been provided in order to establish a metes and bounds legal description and an exhibit which documents this cemetery boundary. See the attachments. Since this site extends into the dedicated street right-of-way, we suggest the City of Wauwatosa be informed. We assume your office will be registering this information with the Burial Sites Preservation Office.
- The streets adjacent to this site are platted as Windsor Court and W. Wisconsin Avenue. The roadway in front of MCMC hospital has not been officially mapped but is commonly referred to as South 87th Street. These correct street names should be incorporated into the text and graphics of the report. The confusion was caused by incorrect street names within the digital topographic maps which DPW provided to Dr. Overstreet. We are editing those maps and will pass this information along to County Grounds Facilities Management.
- Copies of the attachments will be sent to County Grounds Facilities Management. We suggest this information be distributed and explained to the facilities staff so that the suggested burial monitoring of any below grade excavations, including underground utilities, can be implemented as a part of their construction plan review process.

REPORT NO. 310

Location: SE corner of Froedtert Hospital Tract

- It appears as though the Consultant has provided sufficient documentation of the procedures employed and the data collected.
- It appears that the Consultant has analyzed the data and adequately described the resultant conclusions and recommendations to allow development and implementation of appropriate polices regarding the cemetery issue.
- Sufficient detail has been provided in order to establish a metes and bounds legal description and an exhibit which documents this cemetery boundary. See the attachments. Since this site extends into the lease parcel of Froedtert Hospital, we suggest Froedtert Hospital be informed. We assume your office will be registering this information with the Burial Sites Preservation Office.
- Copies of the attachments will be sent to County Grounds Facilities Management. We suggest this information be distributed and explained to the facilities staff so that the suggested burial monitoring of any below grade excavations, including underground utilities, can be implemented as a part of their construction plan review process.

Also attached is a plot of the digital topographic map with the parcels in question superimposed upon the 1989 topographic data. We are in the process of updating these topographic maps with information which has changed since that date due to construction. We should have the revised maps available within the next few months.

We would appreciate any update information you can provide as it becomes available. Should you have any additional questions or further requests regarding this issue, please contact Greg High at 278-4943.

WH:GGH:

Attachments

cc: J. Faulwell, MCMC

W. Hatcher, DPW

G. High, DPW

FROEDERT
LEASE LINE

N 86°30'58"E
283.73'

CEMETERY AREA
34851 SF
0.800 AC

S 06°18'34"W
149.32'

N 85°38'41"W
252.90'

MILWAUKEE COUNTY
GROUNDS

SCALE:
1' = 100'

N 07°26'42"W
112.92'

N 03°21'31"W
421.03'

SW CORNER OF NW 1/4
SECTION 28-7-21

N 86°38'29"E 731.24'

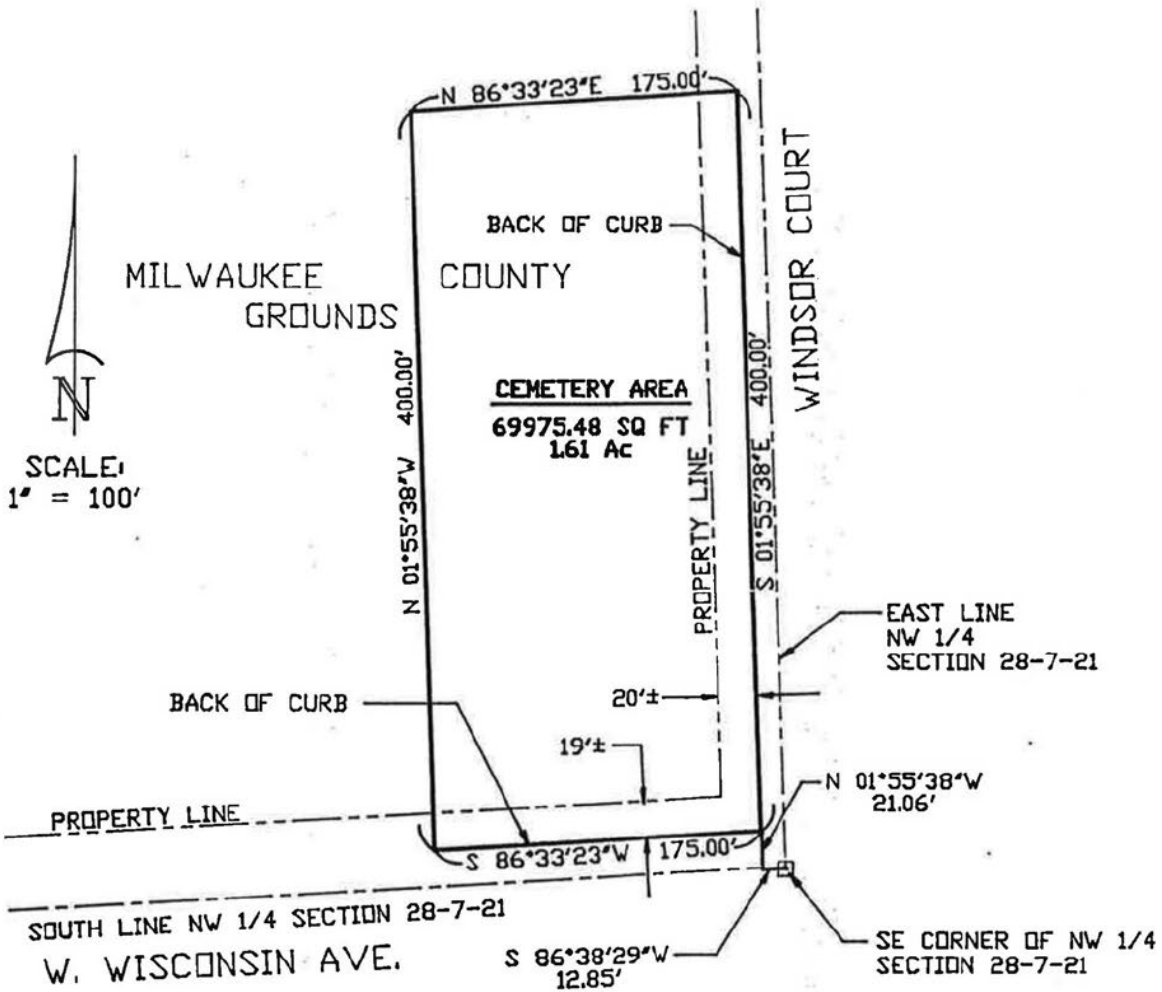
SOUTH LINE NW 1/4 SECTION 28-7-21
W. WISCONSIN AVE.

LEGAL DESCRIPTION

A parcel of land in the Northwest 1/4 of Section 28, Township 7 North, Range 21 East, in the City of Wauwatosa, Milwaukee County, State of Wisconsin, bounded and described as follows:

Commencing at the Southwest corner of said 1/4 Section, thence N 86°38'29" E for 731.24 feet along the South line of said 1/4 Section to a point; thence N 03°21'31" W for 421.03 feet to the point of beginning; thence N 07°26'42" W for 112.92 feet to a point; thence N 86°30'58" E for 283.73 feet to a point; thence S 06°18'34" W for 149.32 feet to a point; thence N 85°38'41" W for 252.90 feet to the point of beginning.

MILWAUKEE COUNTY DEPARTMENT OF PUBLIC WORKS/DEVELOPMENT		
PAUPER CEMETERY WITHIN MILWAUKEE COUNTY GROUNDS FROEDERT HOSPITAL TRACT		
SCALE: 1' = 100'	DWN BY: KDS	DATE: JAN 22, '93



LEGAL DESCRIPTION

A parcel of land in the Northwest 1/4 of Section 28, Township 7 North, Range 21 East, in the City of Wauwatosa, Milwaukee County, State of Wisconsin, bounded and described as follows:

Commencing at the Southeast corner of said 1/4 Section, thence S 86°38'29" W for 12.85 feet along the South line of said 1/4 Section to a point; thence N 01°55'38" W for 21.06 feet to the point of beginning; thence S 86°33'23" W for 175.00 feet to a point; thence N 01°55'38" W for 400.00 feet to a point; thence N 86°33'23" E for 175.00 feet to a point; thence S 01°55'38" E for 400.00 feet to the point of beginning.

MILWAUKEE COUNTY DEPARTMENT OF PUBLIC WORKS/DEVELOPMENT		
PAUPER CEMETERY WITHIN MILWAUKEE COUNTY GROUND W. WISCONSIN AVE. & WINDSOR CT.		
SCALE: 1" = 100'	DWN BY: KDS	DATE: JAN 22, '93



Great Lakes Archaeological Research Center

P.O. Box 17767

1659 N. Jackson St.

(414) 276-9791

Milwaukee, WI 53217

Milwaukee, WI 53202

Cultural Resource Management

November 23, 1992

Mr. Sigmund J. Tomkalski
Associate Hospital Administrator
Milwaukee County Medical Complex
8700 W. Wisconsin Avenue
Milwaukee, WI 53226

Dear Mr. Tomakalski:

This letter will serve as written confirmation of our telephone conversation of November 20, 1992. Excavation at the proposed parking structure site was completed on November 19th with the removal of the last of the graves within the construction area and removal of our trailer and equipment. A total of 1,650 burials were excavated. Of this total, approximately 500 have been inventoried, cataloged, and transported to Marquette University for analysis.

Remote sensing investigations and confirmation trenches have been conducted at the Froedert property and at the intersection of Windsor Place and Wisconsin Avenue. We have very good controls on the limits of the remnant of the cemetery which extends onto Froedert property and at the Windsor and Wisconsin Avenue locality. I estimate that at Windsor and Wisconsin Avenues there are an approximate total of 500 burials which appear to pre-date 1876. As soon as you so indicate, I will have those boundaries marked in order to get the remaining cemetery areas described in metes and bounds so they may be formally registered by the Burial Sites Preservation Office.

Finally, we should schedule a meeting with Ms. Holliday for purposes of securing a written memorandum of remaining tasks for which the County is responsible. From our perspective this will entail the marking of cemetery boundaries, inventory, cataloging, and transportation of approximately 1,100 burials to Marquette, and preparation of a formal final report which meets the Burial Sites Preservation Office guidelines. We need to do this as soon as possible as Ms. Holliday may be leaving her current position on or about 1 January 1993. As a result, personnel changes could result in some confusion or misunderstandings regarding what we view as our responsibilities to Milwaukee County. I think it is in the best interests of Milwaukee County, Great Lakes Archaeological Research Center, Inc., and the Burial Sites Preservation Office to review these matters and to develop some written record.

Thank you for your continued cooperation with these matters. Completion of the excavations within the schedule for construction is a major achievement. Whatever remains to be accomplished will undoubtedly be more easily manageable. Should you or Mr. Stenavich have any comments or questions regarding these matters please do not hesitate to contact Ms. Richards or myself.

Sincerely,



David F. Overstreet, Ph.D.
President

DFO/hos

cc: Mr. William Stenavich, MCDPW
Ms. Dianne Holliday, SHSW
Ms. Patricia Richards, GLARC, Inc.



Great Lakes Archaeological Research Center

P.O. Box 17767
Milwaukee, WI 53217

1659 N. Jackson St.
Milwaukee, WI 53202

(414) 276-9791
FAX (414) 276-9818

Cultural Resource Management



**U.S. Department of Agriculture
Forest Service
Forest Products Laboratory**

June 15, 1993

Harry Alden
Wood Identification
Forest Products Laboratory
1 Gifford Pinchot Drive
Madison, Wisconsin 53705-2398

Regarding your request—

We are replying with marginal notations on your letter. This informal method allows us to process the many wood identification requests more efficiently.

Center for Wood Anatomy Research

FPL-1600-7 (12/83)

Dear Mr. Alden:

Thank you so much for agreeing to identify wood from the six (6) coffins excavated from the Milwaukee County Institution Grounds Pauper Cemetery. I am enclosing one specimen from each as you suggested. They are identified by Lot number on the specimen bag.

I look forward to hearing from you in the near future. Please, feel free to call if you have any questions.

Sincerely yours,

Patricia B. Richards
Research Associate

**IDENTIFIED BY
Center For Wood Anatomy Research
U. S. Forest Products Laboratory
Madison, WI 53705**

All 6 samples are White Pine Group

Harry A. Alden
6/25/93

APPENDIX II

DISINTERMENT PERMIT

MILWAUKEE COUNTY

DISINTERMENT PERMIT

THIS PERMIT, WHEN PROPERLY COMPLETED AND SIGNED, CONSTITUTES AUTHORITY UNDER STATE STATUTE 69.18(4) FOR DISINTERMENT, REMOVAL, TRANSPORTATION, AND REBURIAL OF

THE REMAINS OF: John and Jane Doe, et al
(Blanket disinterment permit issued in accordance with s. 157.70 Statutes for removal, study and re-interment of remains recently discovered on Milwaukee County Medical Complex grounds.)

NAME OF DECEDENT Approximately 200 graves.

DATE OF DEATH -- AGE AT DEATH --

NOW BURIED IN in ground Milwaukee County Medical Complex
(Lot Location - if known) (Name of Cemetery)

CITY, VILL., TOWNSHIP OF Wauwatosa COUNTY OF Milwaukee

PLACE OF REINTERMENT To be determined Milwaukee County Medical Complex grounds
(Lot Location - if known) (Name of Cemetery)

CITY, VILL., TOWNSHIP OF Wauwatosa COUNTY OF Milwaukee

STATE/COUNTRY Wisconsin

At the request of the Wisconsin State Historical Society:

PERMIT ISSUED TO: David Overstreet Qualified Archaeologist in accordance with s. 157.70
(Name of Applicant) (License # if Funeral Director) (1)6. i
8620 N. Regent Rd., Fox Point, WI 53217
(Complete mailing address)

ISSUED BY: Warren Hill

Warren Hill Administrative Manager
223-1215 (Signature) (Title)

9/5/91 PERMIT NUMBER 038
(Date)

PLEASE NOTE: The applicant for the permit is obliged to dispose or arrange for disposal of the corpse in compliance with state laws and local health department rules. Cremation of disinterred remains requires a separate Cremation Permit, signed by the Coroner/Medical Examiner of jurisdiction under Wisconsin State Statute 979.10.

APPENDIX III

**RESEARCH OBJECTIVES FOR THE MILWAUKEE COUNTY INSTITUTION
GROUNDS SKELETAL COLLECTION**

Research Objectives for the Milwaukee County Institutional Grounds Skeletal Collection

The following is an interim statement on work accomplished and anticipated research plans for the skeletal collection from the Milwaukee County Institutional Grounds (hereafter MCIG). After the writer was designated Principle Investigator of the MCIG collection in 1992 the remains were transferred to Marquette University by staff at the Great Lakes Archaeological Research Center, Inc. The transfer of the skeletal collection was completed in December, 1992. In future years, for the duration of the project, year-end summary reports will be submitted to the Burial Sites Commission, State Historical Society, as a courtesy.

The MCIG skeletal collection is comprised of remains representing an estimated 1735 individuals. Approximately 600 of these skeletons are the remains of subadults (<18 years) most of the which are less than one year of age (the precise number will not be known until age determinations are made on all individuals). The adult component of the collection is primarily comprised of individuals in excess of forty years of age at death. Disturbance of burials prior to excavation has resulted in disarticulation and dispersion of as many as 200 burials leaving between 1500 and 1600 individuals which were recovered from burial contexts under controlled excavation. The skeletal remains from these burials are in varying degrees of completeness and the preservation is highly variable. All of the skeletal remains will be the subject of a long term analytical program which is expected to require no less than ten years and no longer than 15 years. The overall aim of the analytical program is to meet statutory requirements and determine, whenever possible, the name of the individual. This necessitates, as reflected in the proposed protocol of the Burial Sites Commission, an extensive review of morphological characteristics traits to determine sex and age of the individual. Moreover, the analysis of each skeleton must also include compilation of data on craniometrics, post-cranial metrics, dental metrics, anatomical variants and pathology.

The initial part of the research program is primarily concerned with subadults. This includes an inventory of skeletal and dental remains and an age at death estimate. The age at death determinations of all subadults has been accomplished, but refinements must yet be made which will be finished by December, 1993. The subadult age determinations are based on mineralization schedules of crowns and roots. Concurrent with age determinations, all subadults were evaluated for evidence of growth arrest as indicated by areas of hypocalcification on enamel surfaces. The results of the analysis of enamel hypoplasia are given in a report by Prindeville (1993).

An inventory of long bones is underway for the subadults. Measurements of the long bones are being taken concurrent with the inventory. Intact tibias of subadults have already been x-rayed and analyzed for the presence of Harris Lines. The results of this analysis are given in a report by Trage (1993).

These studies have been designed to meet statutory guidelines, but will serve as the basis for additional research of scientific interest. The patterns of dental crown and root calcification will be tested for compatibility with existing growth standards to ensure accuracy in the final age determinations. An outgrowth of the subadult skeletal inventory has been the determination of an index of preservation. This will be correlated with the length of time the burial was interred, the age of the individual and an analysis of soils which will be conducted by Dr. Michael Kolb (University of Wisconsin-Milwaukee). The results of the analysis will identify some of the key variables in the preservation of human remains. The measurements of long bones will be used to generate standards of bone growth in the population. This will enable investigators to assign age determinations to those individuals without preserved dentitions. The dimensions of dental crowns will be an additional subject of analysis and the an attempt will be made to use existing discriminant function and principle component formulae for the determination of sex, of subadults, based on dental metrics. An analysis of bone chemistry of subadults will also be conducted. This will be accomplished through elemental surveys at the Scanning Electron Microscope Laboratory, Marquette University, and will not involve any destruction of skeletal or dental tissue.

The study of the subadult remains is anticipated to require one additional year and is anticipated to be finished by the end of August, 1994. At that time the preparation of reports will begin which will be compiled over an estimated one to two years and be complete by the end of the academic year 1995-96.

The inventory of the adult skeletal remains was begun in December, 1992. Approximately ten percent of the inventory has been finished and the remainder will be conducted during the academic year 1993-94 with an anticipated completion date of August, 1994 at the earliest and April, 1995 at the latest. Three analyses of pathology have been completed on the adult remains. These include a review of spinal pathology (Haas 1992) as well as pathology of the hip joint (Luft 1993) and a preliminary review of hypoplastic defects in the dentition of adults (Sullivan 1993).

A proposal has been submitted to the National Science Foundation Data Base Activities Program to fund analyses leading to the estimation of age and the determination of sex of adult skeletons. Grant submission was made in June, 1993 and, if funding is made available, the project will begin in the summer of 1994 and continue for three years. Age estimations will be based upon cortical bone remodeling and permission to conduct destructive analyses has been granted by the Burial Sites Commission. Data from the standard gross age indicators will also be compiled, but only because this is required by the Burial Sites Commission. A number of studies have demonstrated the inadequacy of gross morphological age indicators leaving microscopic techniques as the only existing reliable methods of estimation of age at death in adults. Consequently, to meet statutory guidelines as well as conduct a scientific study that is of even minimal value it is necessary to perform destructive tests. The determination of sex of adult skeletons will be based on discriminant function and principle component analyses of dental metrics. This project will run concurrently with the determinations of age in the adult skeletons.

Analyses of cranial metrics, post-cranial metrics, cranial variants, post-cranial variants and paleopathology are anticipated to begin in 1997 and will continue for an estimated five years. Analyses of dental pathology will begin in 1995 and will be conducted by a group of investigators from the Marquette University School of Dentistry. The analyses of dental pathology will be conducted concurrently with analyses of skeletal pathology.

Respectfully submitted by
Norman C. Sullivan, Ph.D.
Marquette University

APPENDIX IV

GRAVE GOODS INVENTORY

Lot#	Beads	Buttons	Cloths	Coins	Handle	Jars	Jewels	Medical	Misc.	Pins	Religion
1002			1						1		
1003		12	5	2					2		
1004		11	1	10							
1005		7	1						1		
1006							3				
1007		2	2						3		
1008		9	3						1		
1009									1	1	
1010											
1011					3						
1012					4						
1013		9			4				1	1	
1014		7	2								
1015					4						
1016		11									
1017											
1021					4				1		
1022					3				1		
1023					4						
1024											
1025											
1026											
1027											
1028					4		1		1		
1029											
1030		5									
1031											
1032											
1033		1									
1034					3						
1035		5			4						
1036					2				3		
1037					3						
1038					4						
1039					2					2	
1040					2						
1041											
1042					4						
1043											
1044					2						
1045											
1046		10	1		4						
1047											
1048					3				2		
1049											

Lot#	Beads	Buttons	Cloths	Coins	Handle	Jars	Jewels	Medical	Misc.	Pins	Religion
1050											
1051											
1052					4						
2002					4						
2003		1			4				1		
2004		1			4						
2005					4						
2006					4				1		
2007					4						
2008										1	
2009		1			3						
2010					2				1		
2011					2						
2012					2						
2013					2						
2014					2					1	
2015					2						
2016		1		1	4						
2017					4						
2018					2						
2019											
2020		1			2					1	
2021		4	1		2						
2022		2							1		
2023					4				1		
2024					4						
2025					4	1				1	
2026		2			4				1		
2027					4				1	1	
2028					4						
2029					2				1		
2030											
2031					1				1		
2032			1								
2033					3						
2034					2						
2035											
2036									1		
2037		1			4						
2038					4				2		
2039					4						
2040		1	1		4		1			2	
2041					5					1	
2042					4					1	
2043		1			4						

Grave Goods Inventory

Lot#	Beads	Buttons	Cloths	Coins	Handle	Jars	Jewels	Medical	Misc.	Pins	Religion
2044					4	2			2	1	
2045					4	1			3		
2046					4						
2047		1			4						
2048					4				1		
2049					3						
2050					4		1				1
2051					4						
2052					4						
2053					2						
2054					2						
2055					3				1	4	
2056											
2057									1		
2058				2		1					
2059											
2060											
2061					1						
2062		2	6		4				2		
2063		2								1	
2064		6			2				2		
2065					2				1		
2066		1	2		2				3		
2067		2			2						
2068		7	6	2	2				3		
2069		3			4					1	
2070					3			1			
2071		2	1		4		2		3	1	
2072					4						
2073					2						
2074					2				1	1	
2075			1		1				2		
2076					4				1		
2077					3						
2078											
2079											
2080		1			1				2		
2081					4				1		
2082											
2083											
2084											
2085											
2086		1									
2087					4						
2088			1		4				1		

Lot#	Beads	Buttons	Cloths	Coins	Handle	Jars	Jewels	Medical	Misc.	Pins	Religion
2089											
2090		1									
2091						1					
2092											
2093					4						
2094											
2095					4						
2096											
2097											
2098											
2099											
2100											
2101											
2102											
2103											
2104									1		
2105					1						
2106											
2107											
2108											
2109											
2110											
2111											
2112		1			1						
2113											
2114											
2116											
2117											
2118		5			4				1		
2119											
2120											
2121											
2122											
2123											
2124											
2125											
2126											
2127											
2128											
2129	1	1			2				2		
2130											
2131											
2132											
2134											
2135											

Grave Goods Inventory

Lot#	Beads	Buttons	Cloths	Coins	Handle	Jars	Jewels	Medical	Misc.	Pins	Religion
2137					2						
2138					2					1	
2139					2						
2140									1		
2141					2				2		
2142											
2143											
2144											
2145		1									
2146											
2147											
2148									1		
2149											
2150											
2151		1									
2152					3						
2153					2						
2154											
2155											
2156											
2157											
2158											
2159											
2160											
3026					4						
3028					1						
3029					4						
3030											
3031		4			2						
3032					4						
3033					4						
3034					1						
3035					2						
3036					3						
3037											
3038					4				1		
3039					4					1	
3040					3						
3041					4						
3042					4						
3043					4						
3044					4					1	
3045					1						
3046					2						
3047					4						

Lot#	Beads	Buttons	Cloths	Coins	Handle	Jars	Jewels	Medical	Misc.	Pins	Religion
3048										1	
3049					4						
3050		1			4						
3051					4						
3052					1						
3053					2						
3054					4						
3055					3					1	
3056					2						
3057					4				1	1	
3058					3					1	
3059					1						
3060					4						
3061					4						
3062					4						
3063					2					1	
3064					1						
3065					3					1	
3066			1		3						
3067											
3068											
3069					4						
3070					2						
3071					4						
3072					1						
3073					4						
3074					4						
3075					2						
5001					4				1		
5002					4				1		
5003					5						
5004					4						
5005											
5006											
5007					1				1		
5008		2			3						
5009					2						
5010		2			3						
5011											
5012					3						
5013					1						
5014					4						1
5015			1		4					1	
5016					2						
5017					4						

Grave Goods Inventory

Lot#	Beads	Buttons	Cloths	Coins	Handle	Jars	Jewels	Medical	Misc.	Pins	Religion
5018					4						
5019					4						
5020					8						
5021					4						
5022											
5023											
5024					5					1	
5025					4						
5026					4						
5027											
5028					3						
5029					3						
5030											
5031					4		2				
5032					4						
5033					3						
5034		4			4						
5035					4						
5036					4						
5037		2			4						
5038					4					1	
5039					6					2	
5040									1		
5041					7						
5042					3						
5043					7						
5044					7						
5045					4						
5046					1						
5047					3						
5048			1		5		1		3		
5049					4						
5050					2						
5051					2						
5052					3						
5053					4						
5054					4					2	
5055											
5056					4						
5057									1		
5058										2	
5059					3						
5060					4						
5061					4						
5062					2				1		

Lot#	Beads	Buttons	Cloths	Coins	Handle	Jars	Jewels	Medical	Misc.	Pins	Religion
5063											
5064					3					2	
5065					4						
5066					4						
5067					3						
5068					1						
5069					1					1	
5070		2			4						
5071					2				2		
5072					4						
5073					2						
5074		5			3				1		
5075					4						
5076					4				2		
5077					5						
5078					2						
5079					4						
5080											
5081											
5083											
5084											
5085											
5086											
5087				8	4				1		
5088		2			4		1				
5089					4						
5090					4						
5091					4						
5092					3						
5093					4				1		
5094					4						
5095					2						
5096					3				1		
5097					4				1		
5098					4					1	
5099					7						
5100					2						
5101					3						
5102					2						
5103									1		
5104					4					2	
5105					2						
5106					3						
5107		1			3		1			3	
5108					4						

Grave Goods Inventory

Lot#	Beads	Buttons	Cloths	Coins	Handle	Jars	Jewels	Medical	Misc.	Pins	Religion
5109					4				1		
5110					4					6	
5111					4						
5112		8	4		4				3		
5113					4				1	1	
5114					4				1		
5115		2			2						
5116					4				1		
5117					4						
5118					3						
5119					3						
5120											
5121					1						
5122					4						
5123					4						
5124					1						
5125					3						
5126					3						
5127					4						
5128					2		1			1	
5129					2						
5130					3						
5131					2						
5132					4						
5133					2						
5134					3						
5135										2	
5136											
5137					2						
5138					1						
5139					3						
5140					4				1		
5141		2									
5142					4		1				
5143					4						
5144					1						
5145					4					1	
5146					4						
5147					3				1		
5148					2					5	
5149					4						
5150					4					4	
5151					3						
5152											
5153					4						

Grave Goods Inventory

Lot#	Beads	Buttons	Cloths	Coins	Handle	Jars	Jewels	Medical	Misc.	Pins	Religion
5154					3						
5155					1						
5156					2						
5157											
5158		1							1		
5159		1								3	
5161					2						
5162		5			4						
5162		5			4						
5163											
5164					1						
5165											
5166											
5167					2						
5168									1		
5169											
5170					1						
5171											
5173					2						
5174										1	
5175					2						
5176											
5177			1								
5178									1		
5179					1						
5180					1						
5181											
5182					1						
5183			4								
5184											
5185					3				1		
5186											
5187					2						
5188					3						
5189					1						
5190					2						
5191					2						
5192					1						
5193											
5194					2						
5195					2						
5196											
5197										1	
5198											
5200											

Grave Goods Inventory

Lot#	Beads	Buttons	Cloths	Coins	Handle	Jars	Jewels	Medical	Misc.	Pins	Religion
5201					3				1		
5202					3						
5203					1					1	
5204					3					1	
5205					2						
5206											
5207					3					1	
5208	1				4		5			1	
5209					4						
5210					4						
5211										1	
5212					4						
5213					2						
5214					4						
5215					1						
5216											
5217					2						
5218					1						
5219					1						
5220											
5221											
5222											
5223		1			1						
5224					2						
5226					2						
5227											
5228					1						
5229					2						
5230					2						
5231											
5232									1		
5233											
5234					4					1	
5235					3						
5236					4					2	
5237					3						
5238										1	
5239											
5240											
5242											
5243					2						
5248										1	
5251					2						
5252											
5253											

Lot#	Beads	Buttons	Cloths	Coins	Handle	Jars	Jewels	Medical	Misc.	Pins	Religion
5254					3						
5255											
5256					1						
5257					2						
6000									1	1	1
6001											
6002			1						1	1	
6003											
6004											
6005			1			1			1	1	
6006											
6007											
6008											
6009										1	
6010											
6011											
6012											
6013		1	1							2	
6014		6									
6015											
6016											
6017											
6019			1							1	
6020			1								
6021									1		
6022											
6023											
6024											
6025			3						1		
6025			3						1		
6027									1	1	
6028											
6029											
6030											
6031			1							1	
6032									1		
6033										2	
6034			1						1	1	
6035									1	1	
6036											
6037											
6038											
6039										1	
6040			1							1	
6041											

Lot#	Beads	Buttons	Cloths	Coins	Handle	Jars	Jewels	Medical	Misc.	Pins	Religion
6042											
6043											
6044										1	
6045										1	
6046									1		
6047											
6048											
6049											
6050										1	
6051											
6052		4					1				
6053		3	1							1	
6054			1							1	
6055											
6056											
6057			1							1	
6058			1							3	
6059									1		
6060											
6061											
6062										1	
6063										1	
6064		1									
6065										1	
6066											
6067		1	1							1	
6068											
6069										1	
6070			1							5	
6071											
6072											
6073			1							1	
6074		2	1							1	
6075											
6076		2								1	
6077		1								1	
6078		4								2	
6079		5	1							2	
6080		2								1	
6081			1						1	1	
6082			4							1	
6083											
6084											
6085									1		
6086											

Grave Goods Inventory

Lot#	Beads	Buttons	Cloths	Coins	Handle	Jars	Jewels	Medical	Misc.	Pins	Religion
6087											
6088										1	
6089										1	
6090			1						1		
6091		1									
6093			1						3	2	
6094											
6095											
6096											
6097		2	1							1	
6098											
6099											
6100											
6101									1		
6102											
6103											
6104											
6105		4	1							1	
6106		4									
6107		4									
6108											
6109											
6110											
6111			1							2	
6112									1		
6113											
6114		4								5	
6115										1	
6116		1	1						1		
6117									1	1	
6118		2									
6119										1	
6120											
6121			1								
6122										1	
6123										1	
6124										1	
6125											
6126											
6127											
6128											
6129		4							1	1	
6130		4									
6131											
6132											

Lot#	Beads	Buttons	Cloths	Coins	Handle	Jars	Jewels	Medical	Misc.	Pins	Religion
6133											
6134											
6135											
6136											
6137									1		
6138		2	1						1	1	
6139		1	1							1	
6140											
6141			1						1	5	
6142										1	
6143									1		
6144											
6145											
6146		1								3	
6147											
6148											
6149			2								
6150										4	
6151		2	2						1	1	
6152											
6153					4						
6154		3	1							1	
6155											
6156											
6157			1							6	
6158											
6159										1	
6160											
6161									1		
6162		2								1	
6163											
6164		2	1							1	2
6165		2								1	
6166											
6167											
6168		4	1							3	
6169		2			4						
6170		7	1							2	
6171											
6172			1							1	
6173									1		
6174											
6175											
6176											
6177											

Lot#	Beads	Buttons	Cloths	Coins	Handle	Jars	Jewels	Medical	Misc.	Pins	Religion
6178		2							3	2	
6179			1							2	
6180								1			
6181											
6182										1	
6183											
6184											
6185											
6186											
6187		1									
6188											
6189											
6190					4						
6191											
6192		2	1							1	
6193										1	
6194		1							1		
6195			1			1					
6196											
6197			1						1		
6198			1								
6199		1	1								
6200		2									
6201											
6202										4	
6203											
6204			2						1		
6205											
6206									4		
6207		9								3	
6208		2	1							3	
6209		1								2	
6210										1	
6211									1		
6212		2								1	
6213									2		
6214											
6215			1							2	
6216		1	1							1	
6217										1	1
6218		8					1				
6219											
6220		4	1							2	
6221											
6222		1									

Lot#	Beads	Buttons	Cloths	Coins	Handle	Jars	Jewels	Medical	Misc.	Pins	Religion
6223									2		
6224											
6225									1		
6226										1	
6227											
6228											
6229					4						
6230			1		4						
6232		3									
6232		3									
6233											
6234		1								3	
6235		6	1						5		
6236			1								
6237											
6238		2	3	1						1	
6239		5	6	4						1	
6240		2	6							1	
6241			2							2	
6241			2							2	
6242											
6243						1					
6244		1									
6245					4						
6246									4		
6248					4						
6249					4						
6250					4						
6251					4						
6252					4						
6253			1		4		1				
6254					4				1		
6255		1	2						2	2	
6256											
6257											
6258											
6259											
6260										1	
6261										1	
6262			1						1		
6263		3								2	
6264										2	
6265			1						1		
6266		7									
6267											

Lot#	Beads	Buttons	Cloths	Coins	Handle	Jars	Jewels	Medical	Misc.	Pins	Religion
6268					4						
6269											
6270		1								4	
6271			1								
6272											
6273		2									
6274					4				2		
6276		1	1		4						
6277											
6278									3		
6279											
6280											
6281											
6282			4								
6285											
6286											
6287											
6288									1		
6289											
6290											
6291									2		
6294					1						
7000					4						
7001					4				1	1	
7002					4					1	
7003					4						
7004					3						
7005					4					4	
7006					4						
7007					3						
7008					4						
7009					4						
7010					2				1	4	
7011					4						
7012					2						
7013					4						
7014		11	2		4	1		1	3		1
7015					4						
7016					2						
7017					2						
7018					2					1	
7019					2						
7020					4						
7021					4						
7022					4						

Lot#	Beads	Buttons	Cloths	Coins	Handle	Jars	Jewels	Medical	Misc.	Pins	Religion
7023					3						
7024					4						
7025					4						
7026					4						
7027											
7028					3						
7029					3						
7030					5						
7031											
7032											
7033											
7034											
7035					5				1		
7036					7						
7037					7						
7038					4						
7039											
7040											
7041											
7042											
7043											
7044					2						
7045											
7046											
7048									3		
7049					2						
7050							1				
7051											
7052											
7053											
7054											
7055		1									
7056											
7057			2								
7058											
7059											
7060											
7061											
7062									1		
7063											
7064											
7065					1				2		
7066					2						
7067					4					1	
7068			1								

Lot#	Beads	Buttons	Cloths	Coins	Handle	Jars	Jewels	Medical	Misc.	Pins	Religion
7070											
7071					3						
7072					3						
7073											
7075											
7076											
7077		1	2								
7078											
7079			1								
7080					4						
7081					3				1		
7082					4						
7083					4						
7084					1						
7085					4						
7086											
7087					2				1		
7088		13	3		3				5		
7089					4						
7090		2			3						
7091					4				1		
7092					4						
7093					2						
7094					4				2		
7095					4				1		
7096		4			2						
7097					1						
7098					1						
7099		2									
7100					1						
7101					3						
7102					4						
7103					4						
7104					4				1		
7105					2						
7106			1		4						
7107					2						
7108					4					1	
7109			1		4				2		
7110					4						
7111					4						
7112					4				1		
7113			1		3				1		
7114					4						
7115					4						

Lot#	Beads	Buttons	Cloths	Coins	Handle	Jars	Jewels	Medical	Misc.	Pins	Religion
7116					4						
7117					4						
7118											
7119					3						
7120			1							2	
7121			2						1		
7122									1		
7123			1							1	
7124										1	
7125									1		
7126			1							1	
7127			1							1	
7128			1							1	
7129		1									
7130											
7131											
7132											
7133									1		
7134					4						
7135											
7136					4						
7137		1			4						
7138		2			4				4		
7139		3	1							1	
7140											
7141									1		
7142		2									
7143									1	3	
7144					4				2		
7145											
7147											
7148											
7149											
7150											
7151					2						
7152					1						
7153					2						
7154		5			2						
7155											
7156					2						
7157					4					4	
7158					2						
7159					3						
7160					4						
7161		8			4						

Lot#	Beads	Buttons	Cloths	Coins	Handle	Jars	Jewels	Medical	Misc.	Pins	Religion
7162					3						
7163					4						
7164					2						
7165					2						
7166					2						
7167					2						
7168					2						
7169					2					1	
7172					4						
7173					3						
7174											
7175					4						
7176					1						
7177					3						
7178					3						
7179		1			4						
7180					2						
7181					4				2		
7182					4						
7183					4				1		
7184					4						
7185					3						
7186		5	1		8					2	
7187											
7188					4						
7189											
7190											
7191											
7192					1						
7193					4						
7194					4						
7195					2						
7196		7			4						
7197					4						
7198					4				1		
7199		2			4					1	
7200					4				1		
7201					4						
7202											
7203					3						
7205					4				1		
7206					4						
7207					4						
7208					4						
7209		2			4						

Lot#	Beads	Buttons	Cloths	Coins	Handle	Jars	Jewels	Medical	Misc.	Pins	Religion
7210					4						
7211					4						
7212		3	1		4						
7213					4				1		
7214					3				1		
7215					4						
7216					4						
7217		1			4		1		1		
7218					4				2		
7219					4						
7220					4						
7221					4						
7222					4						
7223					4						
7224					4						
7225					4				1		
7226					4						
7227			1		4				2		
7228		13	5	1	3				4		
7230					3				1		
7231					1						
7232					4						
7233					4						
7234		7	1		4				3		
7235					4					1	
7236					3						
7237											
7238											
7239											
7240											
7241			1		4						
7242											
7243											
7244		2							1		
7246											
7247											
7248		2								1	
7249									1		
7250											
7251										1	
7252											
7253											
7254											
7255											
7256											

Lot#	Beads	Buttons	Cloths	Coins	Handle	Jars	Jewels	Medical	Misc.	Pins	Religion
7257									1		
7258										1	
7259											
7260											
7261											
7262									1		
8001					4						
8002					4						
8003					4						
8004					4						
8005					4						
8006					4						
8007					4						
8008					5						
8009			2		5						
8010											
8011									3		
8012											
8013											
8014											
8015					3						
8016					4						
8017					3						
8018					5						
8019											
8020			1						1		
8021					4						
8022					4					6	
8023					4						
8024					4						
8025					4						
8026					4						
8027					2						
8028					3				1		
8029		2			4		1				
8030			1		2				1		
8031					4						
8032					4						
8033					4						
8034					4						
8035					4						
8036					4					2	
8037					4						
8038					3						
8039					4						

Lot#	Beads	Buttons	Cloths	Coins	Handle	Jars	Jewels	Medical	Misc.	Pins	Religion
8040					3				1		
8041		3							1		
8041		3							1		
8043		2	1		4						
8043		2	1		4						
8044					4						
8045					4						
8046					3						
8047					3						
8048					3						
8049		2									
8050					1				3		
8051									1		
8053					4						1
8054					4						
8055					4						
8056					4						
8057					2						
8058			1		4				1		1
8059		2			4						
8060					4						
8061			1		4					1	
8062			1		4					1	
8063					1						
8064					3						
8065					4						
8066					2						
8067		4			4						
8068		4			4						
8069					4						
8070					4						
8071					2						
8072					4						
8073					3						
8074					4						
8075					4						
8076					4						
8077					4						
8078		1			4						
8079					2						
8080					4						
8081					3						
8082		1	1		4					1	
8083					4						
8085					4						

Lot#	Beads	Buttons	Cloths	Coins	Handle	Jars	Jewels	Medical	Misc.	Pins	Religion
8086					4						
8087					4						
8088					1						
8089					4						
8090			1		4		2		4		
8091					4						
8092					4						
8093					1						
8094					4						
8095					4						2
8096					4						
8097		5			4		1		1		
8098					4						
8099					4						
8100					4					2	
8101					4						
8102		7			4						
8103		1								2	
8104					1						
8105					2				1		
8106					4						
8107					2						
8108					4				1		1
8109					4						
8110					4						
8111		2	1		4						
8112			1		4				1		
8113					4				1		
8114					4				1		
8115					3						
8116					5						
8117					3					1	
8118					4				1		
8119					3						
8120					3						
8121			2		4						
8122					4						
8123					4						
8124			1		2						
8125					4					1	
8126					4						
8127					4						
8128					4						
8129		17	1		4				3	1	1
8130					3					1	

Lot#	Beads	Buttons	Cloths	Coins	Handle	Jars	Jewels	Medical	Misc.	Pins	Religion
8131					4						
8132					4						
8133					4						
8134					1						
8135					4						
8136					5						
8137											
8138					4						
8139					4						
8140					4		1			1	
8141					4						
8142					4						
8143					4				1		
8144					2						
8145					4						
8146		8			4						
8147					4						
8148					4						
8149					4				1		
8150					4						
8151					4						
8152					4						
8153					3						
8154					4		1				
8155					4						
8156					1						
8157					4						
8158					4						
8159					4						
8160					2				1		
8161		2	2		5	1			3	1	
8162					4						
8163					3						
8164					5						
8165					4						
8166					4						
8167		1	2		4				3		
8168					4						
8169					4						
8170					4						
8171					4				1		
8172					3				1		
8173		3			4						
8174									1		
8175										1	

Lot#	Beads	Buttons	Cloths	Coins	Handle	Jars	Jewels	Medical	Misc.	Pins	Religion
8176											
8177					2						
8178					4						
8179					2				1		
8180			1		4				2		
8181					4						
8182					4						
8183					4						
8184					4						
8185											
8187					2						
8188					4						
8189		2			4						
8190					4						
8191					4						
8192			1		4				1		
8193					2		1				2
8194					4					1	
8195					4						
8196					4						
8197					1						
8198											
8199											
9001											
9002											
9003									1		
9004											
9005		3								2	
9006											
9007		1									
9008										1	
9009		6	2							2	
9010								1			
9011											
9012											
9013										2	
9014			1						4	3	
9015			1							2	
9016										1	
9017											
9018		2								1	
9019										2	
9020											
9021											
9022		1								1	

Lot#	Beads	Buttons	Cloths	Coins	Handle	Jars	Jewels	Medical	Misc.	Pins	Religion
9023		2								2	
9024		1								1	
9025											
9026										1	
9027										1	
9028											
9030										3	
9031											
9032											
9033											
9034											
9035		2								1	
9036											
9037											
9038											
9039										2	
9040											
9041											
9042										1	
9043											
9044		1	1							2	
9045											
9046											
9047										1	
9048											
9049									1		
9050											
9051									1		
9052											
9053											
9054											
9055											
9056											
9057											
9058		2									
9059										1	
9060											
9061											
9062										6	
9063											
9064											
9065											
9066										2	
9067											
9068						1					

Lot#	Beads	Buttons	Cloths	Coins	Handle	Jars	Jewels	Medical	Misc.	Pins	Religion
9069		6	2							2	
9070											
9071											
9072											
9073										1	
9074											
9075											
9076											
9077											
9078											
9079											
9080										5	
9081		3									
9082		10								3	
9083		3							1		
9084		2							1	4	
9085		2								1	
9086										1	
9087										1	
9088											
9089											
9090											
9091		1									
9093		1									
9094		2								2	
9095											
9096									1		
9097		3								1	
9098											
9099		2								1	
9100											
9101											
9102											
9103											
9104		5									
9105		1									
9106		3									
9108											
9109		1								1	
9110											
9111										1	
9112											
9113											
9114		3									
9115		2									

Lot#	Beads	Buttons	Cloths	Coins	Handle	Jars	Jewels	Medical	Misc.	Pins	Religion
9116		2									
9117											
9118											
9119		6	2							1	
9120			1						3	1	1
9121		1									
9122	26										
9123											
9125									1		
9126			1						1	2	
9127										1	
9128		1									
9129									1		
9130											
9131										1	
9132											
9133											
9134											
9135											
9137											
9138											
9139											
9140		1								1	
9141										1	
9142											
9143		5								1	
9144											
9145											
9146									1		
9147											
9148									1		
9149		1	1								
9150									1	1	
9151											
9152											
9153											
9154											
9155									1		
9156											
9157											
9158										1	
9159											
9160											
9161											
9162		2							1	1	

Lot#	Beads	Buttons	Cloths	Coins	Handle	Jars	Jewels	Medical	Misc.	Pins	Religion
9163											
9164		2	1							4	
9165									1		
9166		2							2	3	
9167		1								1	
9168		1									
9170										1	
9171		5								3	
9172		3									
9173		4								2	
9175		4			4					2	
9176		1			2						
9177		4								1	
9178		3	1							3	
9179		2			3					3	
9180		4			4						
9181											
9182											
9183		1									
9184		1								1	
9185										2	
9186		1	1							7	
9187		11							2	1	
9188											
9189											
9190		1	1							4	
9191		2									
9192											
9193		6									
9194										1	
9195										1	
9196											
9198											
9199											
9200											
9201											
9202										1	
9203										1	
9204										2	
9205										1	
9206										1	
9207											
9208											
9209					4						
9210					3						

Lot#	Beads	Buttons	Cloths	Coins	Handle	Jars	Jewels	Medical	Misc.	Pins	Religion
9211					2						
9212					4						
9213					4						
9214					4						
9215					4						
9216					4						
9217					4						
9218		5			1						
9219					1						
9220											
9221					1					1	
9222					5						
9223					4						
9224		4			4						
9225					4						
9226					4						
9227					1						
9228					4						
9229					3						
9230					4						
9231		2			4				1		2
9232		1	1	1	4						
9233					4					1	
9234					4						
9235					3						
9236					4						
9237					4						
9238			1		7						
9238			1		7						
9240					4						
9241					2		1				
9243					4						
9244					3				1	1	
9245					3		1		1		
9246					2						
9247					4						
9248					4						
9249					4				1	3	
9250					4						
9251					4						
9252		8			4				1		
9253					4						
9254		3			4						
9255					4						
9256					4						

Grave Goods Inventory

Lot#	Beads	Buttons	Cloths	Coins	Handle	Jars	Jewels	Medical	Misc.	Pins	Religion
9257		5			4						
9258					4						
9259					3						
9260					4						
9261					4						
9262					4					1	
9263					3				1	1	
9264		2			4					1	
9265					4						
9266					4						
9267					4						
9268					5				1		
9269		2	2		2				5		
9270		4			5						
9271		4	1		4						
9272					4						
9273		3			4						
9274		2			3				1		
9275		3			4					1	
9276					4						
9277					2						
9278					5						
9279					4				1		
9280					4						
9281					4						
9282					4						
9283					4						
9284					3						
9285					2				1		
9286					3						
9287					4						
9288					2						
9289					4						
9290		2			4						
9291					3						
9292		2	2		3				4		
9293					5						
9294		4			4						
9295					3				1		
9296											
9297		6			4						
9298					4						
9299					4						
9300					2						
9301					1						

Lot#	Beads	Buttons	Cloths	Coins	Handle	Jars	Jewels	Medical	Misc.	Pins	Religion
9302					1				1		
9303					3						
9304					2						
9305					4						
9308					3						
9309					4						
9310					4						
9311											
9312										4	
9313											
9314									1	1	
9315					4						
9316										1	
9317											
9318					5						
9319											
9320											
9321		3			4						
9322											
9323		3								1	
9324		2								1	
9325		2									
9327											
9328											
9329											
9330					1						
9331											
9332											
9333	1		1		3					2	1
9334											
9335											
9336											
9336											
9337											
9338									1	2	
9339		1									
9340											
9341		1	1							1	
9342		4			2						
9343					2						
9344		5									
9345					3						
9346		3			3					1	
9347					3						
9348					4						

Lot#	Beads	Buttons	Cloths	Coins	Handle	Jars	Jewels	Medical	Misc.	Pins	Religion
9349					3						
9350		6			3						
9351					4		3			6	
9352		1			4						
9353					5						
9354					4						
9355		3	2		4		1		1	1	
9356											
9357			1		4					4	
9358					4				1		
9359					4						
9360					4						
9361		1			4						
9362					4					1	
9363										1	
9364											
9365											
9366					4						
9367											
9368						1					
9369											
9370					2	1					
9371											
9372											
9373											
9374											
9375											
9376											
9377		3	1							1	
9378			1							3	
9379										2	
9380											
9381											
9382											
9383											
9384											
9385											
9386											
9387			1							3	
9388										2	
9389									1		
9390										2	
9391											
9392											
9393										1	

Lot#	Beads	Buttons	Cloths	Coins	Handle	Jars	Jewels	Medical	Misc.	Pins	Religion
9394											
9396											
9398											
9399											
9400		5	1						1	1	
9401		3								1	
9402		1								1	
9403					4						
9404											
9404											
9405			1								
9406											
9408											
9409										2	
9410											
9411											
9412										1	
9413											
9414											
9415		5								3	
9416										1	
9417						1					
9418											
9419											
9420		2									
9421											
9422											
9423									1		
9425		4								2	
9425		4								2	
9427											
9427											
9429										2	
9429										2	
9430			2						2	5	
9430			2						2	5	
9431										2	
9431										2	
9432			1						1	5	
9432			1						1	5	
9433		2								2	
9433		2								2	
9434		3	2							5	
9434		3	2							5	
9436											

Lot#	Beads	Buttons	Cloths	Coins	Handle	Jars	Jewels	Medical	Misc.	Pins	Religion
9436											
9440		3								3	
9440		3								3	
9441											
9441											
9442			1						1	3	
9442			1						1	3	
9443		2									
9443		2									
9444		2								2	
9444		2								2	
9445		4									
9445		4									
9446		2									
9446		2									
9448		2									
9448		2									
9449		2									
9449		2									
9450										2	
9450										2	
9451										2	
9451										2	
9452		2								2	
9452		2								2	
9453		2								3	
9453		2								3	
9454										2	
9454										2	
9455											
9455											
9456											
9456											
9457											
9457											
9458											
9458											
9459											
9459											
9460											
9460											
9461											
9461											
9462										2	
9462										2	

Lot#	Beads	Buttons	Cloths	Coins	Handle	Jars	Jewels	Medical	Misc.	Pins	Religion
9463											
9463											
9464		4								4	
9464		4								4	
9465		5	2		1					2	
9465		5	2		1					2	
9466		2									
9466		2									
9469			2		4					4	
9469			2		4					4	
9470			2		2					4	
9470			2		2					4	
9471											
9471											

APPENDIX V

INDIVIDUAL BURIAL DESCRIPTIONS

Burial lot #1001 was located in Area B with the coordinates in the NW corner of the coffin N137'10" W73'0". The elevation at the base of the coffin in the NW corner was 743.68 famsl. The coffin shape and length could not be determined due to disturbance and decay of coffin wood. Its width was 18" and contained the remains of 1 sub-adult individual. The primary individual was face up with the head to the west facing east. The following grave goods for burial lot #1001 were recovered: wire, buttons, thread, cloth, copper buckles, and a shirt stud.

Burial lot #1002 was located in Area B with the coordinates in the NW corner of the coffin N134'4" W72'2". The elevation at the base of the coffin in the NW corner was 743.98 famsl. The length could not be determined for the 6 sided adult coffin. Its width was 21" and the coffin contained the remains of 1 individual. The primary individual was face up with the head to the west facing east. The following grave goods for burial lot #1002 were recovered: cloth, and a copper snap.

Burial lot #1003 was located in Area B with the coordinates in the NW corner of the coffin N138'11" W83'4". The elevation at the base of the coffin in the NW corner was 744.78 famsl. The 6 sided adult coffin (72" x 18") contained the remains of 1 individual. The primary individual was face up with the head to the west facing east. The following grave goods for burial lot #1003 were recovered: 2 coins, copper buckles, buttons, cloth, and a pair of shoes.

Burial lot #1004 was located in Area B with the coordinates in the NW corner of the coffin N134'5" W83'2". The elevation at the base of the coffin in the NW corner was 743.91 famsl. The 6 sided adult coffin (72" x 17.5") contained the remains of 1 individual. The primary individual was face up with the head to the west facing east. The following grave goods for burial lot #1004 were recovered: buttons, 10 coins, and a shoe.

Burial lot #1008 was located in Area B with the coordinates in the NW corner of the coffin N141'3" W72'3". The elevation at the base of the coffin in the NW corner was 744.31 famsl. The 6 sided adult coffin (68" x 20") contained the remains of 1 individual. The primary individual was face up with the head to the west facing east. The following grave goods for burial lot #1008 were recovered: buttons, cloth, a pair of shoes, and a piece of copper.

Burial lot #1009 was located in Area B with the coordinates in the NW corner of the coffin N151'2" W73'10". The elevation at the base of the coffin in the NW corner was 744.85 famsl. The 6 sided adult coffin (63" x 18") contained the remains of 1 individual. The primary individual was face up with the head to the west facing east. The following grave goods for burial lot #1009 were recovered: glass fragments, and a safety pin.

Burial lot #1010 was located in Area B with the coordinates in the NW corner of the coffin N152'4" W83'0". The elevation at the base of the coffin in the NW corner was 744.49 famsl. The 6 sided adult coffin (71" x 18") contained the remains of 1 individual. The primary individual was face up with the head to the west facing east. There were no grave goods recovered for burial lot #1010.

Burial lot #1011 was located in Area B with the coordinates in the NW corner of the coffin N164'2" W73'2" The elevation at the base of the coffin in the NW corner was 745.16 famsl. The 6 sided adult coffin (72" x 18") contained the remains of 1 individual. The primary individual was face up with the head to the west facing east. There were no grave goods recovered for burial lot #1011.

Burial lot #1012 was located in Area B with the coordinates in the NW corner of the coffin N158'6" W84'0". The elevation at the base of the coffin in the NW corner was 745.05 famsl. The 6 sided adult coffin (76" x 16") contained the remains of 1 individual. The primary individual was face up with the head to the west facing east. There were no grave goods recovered for burial lot #1012.

Burial lot #1013 was located in Area * with the coordinates in the NW corner of the coffin N 160' 0" W 73' 9" The elevation at the base of the coffin in the NW corner was 744.60 famsl. The 6 sided adult coffin (73 " x 21") contained the remains of 1 individual. The primary individual was face up with the head to the west facing east. The following grave goods for burial lot #1013 were recovered: buttons, paper, a safety pin, and a buckle.

Burial lot #1014 was located in Area B with the coordinates in the NW corner of the coffin N 149' W 82' 11" The elevation at the base of the coffin in the NW corner was 744.24 famsl. The 6 sided adult coffin (70" x 20") contained the remains of 1 individual.

The primary individual was face up with the head to the west facing east. The following grave goods for burial lot #1014 were recovered: wood and shell buttons, and a pair of shoes.

Burial lot #1015 was located in Area B with the coordinates in the NW corner of the coffin N 149' 11" W 82' 11". The elevation at the base of the coffin in the NW corner was 743.97famsl. The 6 sided adult coffin (73" x 20") contained the remains of 1 individual.

The primary individual was face up with the head to the west facing east. No grave goods for burial lot #1015 were recovered.

Burial lot #1016 was located in Area B with the coordinates in the NW corner of the coffin N 145' 2" W 72' 7" The elevation at the base of the coffin in the NW corner was 743.72 famsl. The 6 sided adult coffin (72" x 18") contained the remains of 1 individual. *

The primary individual was face up with the head to the west facing east. The following grave goods for burial lot #1016 were recovered: buttons.

Burial lot #1017 was located in Area B with the coordinates in the NW corner of the coffin N156'8" W74'3". The elevation at the base of the coffin in the NW corner was 744.41 famsl. The shape and length of the coffin is indeterminate., with only one individual present. The primary individual was face up with the head to the west facing east. No grave goods were recovered for burial lot #1017.

Burial lot #1018 was located in Area B with the coordinates in the NW corner of the coffin N123'6" W70'6" The elevation at the base of the coffin in the NW corner was 745.57 famsl. The coffin size and shape is indeterminate and contained the remains of 1 individual. The primary individual was face up with the head to the west facing east. No grave goods for burial lot #1018 were recovered:

Burial lot #1021 was located in Area B with the coordinates in the NW corner of the coffin N203'7" W82'4". The elevation at the base of the coffin in the NW corner was 745.44 famsl. The 6 sided adult coffin (73" x 19") contained the remains of 1 individual. The primary individual was face up with the head to the west facing east. The following grave goods for burial lot #1021 were recovered: copper wire.

Burial lot #1022 was located in Area B with the coordinates in the NW corner of the coffin N199'10" W74'2". The elevation at the base of the coffin in the NW corner was 746.02 famsl. The 6 sided adult coffin (74" x ?") contained the remains of 1 individual. The primary individual was face up with the head to the west facing east. The following grave goods for burial lot #1022 were recovered: scrap iron.

Burial lot #1023 was located in Area B with the coordinates in the NW corner of the coffin N199'8" W65'4". The elevation at the base of the coffin in the NW corner was 743.72 famsl. The 6 sided adult coffin (74" x 17") contained the remains of 1 individual. The primary individual was face up with the head to the west facing east. No grave goods for burial lot #1023 were recovered.

.Burial lot #1024 was located in Area B with the coordinates in the NW corner of the coffin N200'2" W56'11". The elevation at the base of the coffin in the NW corner was 743.79 famsl. The coffin was of indeterminate size and shape and contained the remains of 1 individual. The primary individual was face up with the head to the west facing east. No grave goods for burial lot #1024 were recovered:

Burial lot #1025 was located in Area B with the coordinates in the NW corner of the coffin N200'2" W56'11". The elevation at the base of the coffin in the NW corner was 744.58 famsl. The coffin is of indeterminate size and shape. The primary individual was placed in an indeterminate position within the burial. No grave goods for burial lot #1025 were recovered:

Burial lot #1026 was located in Area B with the coordinates in the NW corner of the coffin N203'7"W82'4". The elevation at the base of the coffin in the NW corner was 746.23 famsl. This burial lot was found in the pit fill of burial lot #1021 and there was no evidence of a coffin present. No grave goods for burial lot #1026 were recovered.

Burial lot #1027 was located in Area B with the coordinates in the NW corner of the coffin N200'2"W56'11". The elevation at the base of the coffin in the NW corner was 743.00 famsl. The coffin is of indeterminate size and shape, but contained the remains of 1 individual. The primary individual was in an indeterminate position within the burial. This burial is in association with burial lot #s1024, 1025, and 1029. No grave goods for burial lot #1027 were recovered:

Burial lot #1028 was located in Area B with the coordinates in the NW corner of the coffin N199'8"W65'4". The elevation at the base of the coffin in the NW corner was 742.80 famsl. The coffin is of indeterminate size and shape, but contained the remains of 1 individual. The primary individual was in an indeterminate position and of indeterminate age, and is in association with burial lot #1023 No grave goods for burial lot #1028 were recovered:

Burial lot #1029 was located in Area B with the coordinates in the NW corner of the coffin N200'2" W56'11". No coffin was present as this burial was from the pit fill of burial lot #1027. The primary individual was in an indeterminate position. No grave goods for burial lot #1029 were recovered.

Burial lot #1030 was located in Area B with the coordinates in the NW corner of the coffin N149'2" W72'2". The elevation at the base of the coffin in the NW corner was 744.04 famsl. The 4 sided adult coffin (50" x 17") contained the remains of 1 individual. The primary individual was face up with the head to the west facing east. The following grave goods for burial lot #1030 were recovered: buttons .

Burial lot #1031 was located in Area B with the coordinates in the NW corner of the coffin N156'8" W74'3". The elevation at the base of the coffin in the NW corner was 744.91 famsl. The length could not be determined for there was no coffin as this lot was found in the pit fill of burial #1017. The remains of 1 individual were found within the fill. The primary individual was in an indeterminate position. No grave goods for burial lot #1031 were recovered:

Burial lot #1032 was located in Area B with the coordinates in the NW corner of the coffin N160'0" W73'9". The elevation at the base of the coffin in the NW corner was 745.10 famsl. The burial was from the pit fill of burial #1013 and contained the remains of 1 individual. The individual was a secondary burial and was in an indeterminate position within the pit. No grave goods for burial lot #1032 were recovered.

Burial lot #1033 was located in Area B with the coordinates in the NW corner of the coffin N154'1" W83'2". The elevation at the base of the coffin in the NW corner was 744.97 famsl. This burial was from the pit fill of burial #1015. The primary individual was in an indeterminate position. The following grave goods for burial lot #1033 were recovered; one button.

Burial lot #1034 was located in Area B with the coordinates in the NW corner of the coffin N186'11" W82'2". The elevation at the base of the coffin in the NW corner was 745.12 famsl. The 6 sided adult coffin (70" x 20") contained the remains of 1 individual. The primary individual was face up with the head to the west facing east. Burial lot #1047 was located beneath lot #1034. No grave goods for burial lot #1034 or #1047 were recovered .

Burial lot #1035 was located in Area B with the coordinates in the NW corner of the coffin N177'10" W82'6". The elevation at the base of the coffin in the NW corner was 745.28 famsl. The 6 sided adult coffin (75" x 18") contained the remains of 1 individual. The primary individual was face up with the head to the west facing east. Within the pit fill of this burial was located burial lot #1041, which was skeletal remains. The following grave goods for burial lot #1035 were recovered; shell and glass buttons.

Burial lot #1036 was located in Area B with the coordinates in the NW corner of the coffin N174'3" W82'10". The elevation at the base of the coffin in the NW corner was 744.83 famsl. The 6 sided adult coffin (18" wide and truncated by a trench) contained the remains of 1 individual. The primary individual was face up with the head to the west facing east. The following grave goods for burial lot #1036 were recovered, a spike and glass fragments.

Burial lot #1037 was located in Area B with the coordinates in the NW corner of the coffin N177'0" W73'4". The elevation at the base of the coffin in the NW corner was 744.75 famsl. The 6 sided adult coffin (22" wide and truncated by a trench) contained the remains of 1 individual. Skeletal elements found in association were found in the trench, and given lot #1050. The primary individual was face up with the head to the west facing east. No grave goods for burial lot #1037 were recovered.

Burial lot #1038 was located in Area B with the coordinates in the NW corner of the coffin N181'2" W73'0". The elevation at the base of the coffin in the NW corner was 745.00 famsl. The indeterminately sided adult coffin contained the remains of 1 individual. The primary individual was face up with the head to the west facing east. No grave goods for burial lot #1038 were recovered.

Burial lot #1039 was located in Area B with the coordinates in the NW corner of the coffin N184'5" W72'3". The elevation at the base of the coffin in the NW corner was 737.28 famsl. The coffin was of indeterminate size and shape and contained the remains of 1 individual of indeterminate age. The primary individual was face up with the head to the west facing east. The following grave goods for burial lot #1039 were recovered, safety pins.

Burial lot #1040 was located in Area B with the coordinates in the NW corner of the coffin N161'11" W80'11". The elevation at the base of the coffin in the NW corner was 743.82 famsl. The 6 sided adult coffin (68" x 21") contained the remains of 1 individual. The primary individual was face up with the head to the west facing east. No grave goods for burial lot #1040 were recovered.

Burial lot #1042 was located in Area B with the coordinates in the NW corner of the coffin N187'6" W69'0". The elevation at the base of the coffin in the NW corner was 743.51 famsl. The 6 sided sub-adult coffin (45" x 12") contained the remains of 1 individual. The primary individual was face up with the head to the west facing east. Burial #1048 was located beneath lot #1042. No grave goods for burial lot #1042 were recovered. Buttons, scrap iron, and a copper button were found with burial lot #1048.

Burial lot #1043 was located in Area B with the coordinates in the NW corner of the coffin N167'11" W66'3". The elevation at the base of the coffin in the NW corner was 744.42 famsl. The 6 sided adult coffin (72" x 20") contained the remains of 1 individual. The primary individual was face up with the head to the west facing east. The pit fill from this burial contained skeletal remains that were given lot #1051. No grave goods for burial lot #1043 or #1051 were recovered.

Burial lot #1044 was located in Area B with the coordinates in the NW corner of the coffin N175'11" W65'11". The elevation at the base of the coffin in the NW corner was 744.46 famsl. The 6 sided adult coffin (73" x 16") contained the remains of 1 individual. The primary individual was face up with the head to the west facing east. No grave goods for burial lot #1044 were recovered.

Burial lot #1045 was located in Area B with the coordinates in the NW corner of the coffin N180'0" W67'5". The elevation at the base of the coffin in the NW corner was 744.41 famsl. The indeterminately sided adult coffin (73" x 20") contained the remains of 1 individual. The primary individual was face up with the head to the west facing east. This burial is in association with burial #s 1037 and 1049. No grave goods for burial lot #1045 or #1049 were recovered.

Burial lot #1046 was located in Area B with the coordinates in the NW corner of the coffin N183'9" W66'11". The elevation at the base of the coffin in the NW corner was 744.29 famsl. The indeterminately sided adult coffin (72" x 17") contained the remains of 1 individual. The primary individual was face up with the head to the west facing east. Burial lot #1052 was found beneath lot #1046, which contained no grave goods. The following grave goods for burial lot #1046 were recovered; buttons, cloth, and glass fragments.

Burial lot #2002 was located in Area C with the coordinates in the NW corner of the coffin N207'1" W82'2". The elevation at the base of the coffin in the NW corner was 745.52 famsl. The 6 sided adult coffin (69" x 18") contained the remains of 1 individual. The primary individual was face up with the head to the west facing east. Secondary elements were found in the pit fill of #2002, which were given lot #2150. No grave goods for burial lot #2002 or #2150 were recovered.

Burial lot #2003 was located in Area C with the coordinates in the NW corner of the coffin N211'11" W82'1". The elevation at the base of the coffin in the NW corner was 745.38 famsl. The 6 sided adult coffin (73" x 17") contained the remains of 1 individual. The primary individual was face up with the head to the west facing east. Secondary elements were found in the pit fill of #2003, which were given lot #2143. No grave goods for burial lot #2003 or #2143 were recovered.

Burial lot #2004 was located in Area C with the coordinates in the NW corner of the coffin N214'11" W81'0". The elevation at the base of the coffin in the NW corner was 745.62 famsl. The 6 sided adult coffin (69" x 18") contained the remains of 1 individual. The primary individual was face up with the head to the west facing east. Secondary elements were found in the pit fill of #2004, which were given lot #2134. The following grave goods for burial lot #2002 were recovered; a glass button. No grave goods were found in lot #2134.

Burial lot #2005 was located in Area C with the coordinates in the NW corner of the coffin N218'8" W81'2". The elevation at the base of the coffin in the NW corner was 746.17 famsl. The 6 sided adult coffin (73" x 20") contained the remains of 1 individual. The primary individual was face up with the head to the west facing east. No grave goods for burial lot #2005 were recovered.

Burial lot #2006 was located in Area C with the coordinates in the NW corner of the coffin N222'7" W80'10". The elevation at the base of the coffin in the NW corner was 745.60 famsl. The 6 sided adult coffin (76" x 21") contained the remains of 1 individual. The primary individual was face up with the head to the west facing east. Secondary elements were found in the pit fill of #2006, which were given lot #2135. The following grave goods for burial lot #2006 were recovered; ceramic fragments. No grave goods were found in lot #2135.

Burial lot #2007 was located in Area C with the coordinates in the NW corner of the coffin N226'9" W80'8". The elevation at the base of the coffin in the NW corner was 745.66 famsl. The 6 sided adult coffin (72" x 18") contained the remains of 1 individual. The primary individual was face up with the head to the west facing east. Secondary elements were found in the pit fill of #2007, which were given lot #2131. No grave goods for burial lot #2007 or #2131 were recovered.

Burial lot #2008 was located in Area C with the coordinates in the NW corner of the coffin N230'3" W80'4". The elevation at the base of the coffin in the NW corner was 745.78 famsl. The 6 sided adult coffin (66" x 18") contained the remains of 1 individual. The primary individual was face up with the head to the west facing east. Secondary elements were found in the pit fill of #2008, which were given lot #2125. The following grave goods for burial lot #2002 were recovered; a pin. No grave goods were found in lot #2125.

Burial lot #2009 was located in Area C with the coordinates in the NW corner of the coffin N232'6" W79'4". The elevation at the base of the coffin in the NW corner was 745.14 famsl. The 6 sided adult coffin (72" x 18") contained the remains of 1 individual. The primary individual was face up with the head to the west facing east. Secondary elements were found in the pit fill of #2009, which were given lot #2128. The following grave goods for burial lot #2002 were recovered; a button. No grave goods for lot #2128 were recovered.

Burial lot #2010 was located in Area C with the coordinates in the NW corner of the coffin N249'6" W79'3". The elevation at the base of the coffin in the NW corner was 744.61 famsl. The 6 sided adult coffin (which was partially destroyed by a trench) contained the remains of 1 individual. The primary individual was face up with the head to the west facing east. The grave goods for burial lot #2010 were recovered; an iron wire.

Burial lot #2011 was located in Area C with the coordinates in the NW corner of the coffin N253'7" W80'11". The elevation at the base of the coffin in the NW corner was 744.37 famsl. The 6 sided adult coffin (of indeterminate size and shape) contained the remains of 1 individual. The primary individual was face up with the head to the west facing east. No grave goods for burial lot #2011 were recovered.

Burial lot #2012 was located in Area C with the coordinates in the NW corner of the coffin N258'3" W78'3". The elevation at the base of the coffin in the NW corner was 744.37 famsl. The 6 sided adult coffin (of indeterminate size and shape from damage done by a trench) contained the remains of 1 individual. The primary individual was face up with the head to the west facing east. Secondary elements were found in the pit fill of #2012, which were given lot #2112. No grave goods for burial lot #2012 were recovered. Lot #2112 had the following for grave goods; a button.

Burial lot #2013 was located in Area C with the coordinates in the NW corner of the coffin N261'9" W78'9". The elevation at the base of the coffin in the NW corner was 743.93 famsl. The 6 sided adult coffin (of indeterminate size and shape due to damage done by a trench) contained the remains of 1 individual. The primary individual was face up with the head to the west facing east. Secondary elements were found in the pit fill of #2013, which were given lot #2111. No grave goods for burial lot #2002 or #2150 were recovered.

Burial lot #2014 was located in Area C with the coordinates in the NW corner of the coffin N265'0" W78'7". The elevation at the base of the coffin in the NW corner was 743.53 famsl. The 6 sided adult coffin (of indeterminate size and shape due to damage done by a trench) contained the remains of 1 individual. The primary individual was face up with the head to the west facing east. Secondary sub-adult elements were found in the pit fill of #2014, which were given lot #2126. The following grave goods for burial lot #2014 were recovered; a safety pin. No grave goods were found with lot #2126.

Burial lot #2015 was located in Area C with the coordinates in the NW corner of the coffin N268'11" W79'7". The elevation at the base of the coffin in the NW corner was 743.61 famsl. The 6 sided adult coffin (of indeterminate size and shape due to damage done by a trench) contained the remains of 1 individual. The primary individual was face down with the head to the west facing east. Secondary elements were found in the pit fill of #2015, which were given lot #2117. No grave goods for burial lot #2015 or #2117 were recovered.

Burial lot #2016 was located in Area C with the coordinates in the NW corner of the coffin N206'0" W73'9". The elevation at the base of the coffin in the NW corner was 744.98 famsl. The adult coffin (77"x 18") contained the remains of 1 individual. The primary individual was indeterminately situated within the coffin. Secondary elements were found in the pit fill of #2016, which were given lot #2149. The following grave goods for burial lot #2016 were recovered; a button and a dime. No grave goods were found with lot #2149.

Burial lot #2018 was located in Area C with the coordinates in the NW corner of the coffin N231'9" W71'7". The elevation at the base of the coffin in the NW corner was 744.74 famsl. The adult coffin (of indeterminate size and shape due to its poor state of preservation) contained the remains of 1 individual. The primary individual was face up with the head to the west facing east. Secondary elements were found in the pit fill of #2018, which were given lot #2127. No grave goods for burial lot #2018 or #2127 were recovered.

Burial lot #2019 was located in Area C with the coordinates in the NW corner of the coffin N235'10" W67'8". The elevation at the base of the coffin in the NW corner was 744.37 famsl. The adult coffin (of indeterminate size and shape due to nearby trench work) contained the remains of 1 individual. The primary individual was face up with the head to the west facing east. Secondary elements were found in the pit fill of #2019, which were given lot #2122. No grave goods for burial lot #2019 or #2122 were recovered.

Burial lot #2020 was located in Area C with the coordinates in the NW corner of the coffin N240'2" W71'0". The elevation at the base of the coffin in the NW corner was 744.49 famsl. The adult coffin (of indeterminate size and shape due to trench disturbance) contained the remains of 1 individual. The primary individual was face up with the head to the west facing east. Secondary elements were found in the pit fill of #2020, which were given lot #2123. The following grave goods for burial lot #2020 were recovered; a safety pin and a button. No grave goods were recovered from lot #2123.

Burial lot #2021 was located in Area C with the coordinates in the NW corner of the coffin N247'6" W70'10". The elevation at the base of the coffin in the NW corner was 744.12 famsl. The 6 sided adult coffin (74" x 17") contained the remains of 1 individual. The primary individual was face up with the head to the west facing east. Lot #2159 was adult skeletal elements from the pit fill of burial lot #2021. The following grave goods for burial lot #2021 were recovered; buttons, and eyelets from an indeterminate article of clothing. No grave goods for lot #2159 were recovered.

Burial lot #2022 was located in Area C with the coordinates in the NW corner of the coffin N250'6" W71'6". The elevation at the base of the coffin in the NW corner was 744.16 famsl. The 6 sided adult coffin (68" x 19") contained the remains of 1 individual. The primary individual was face up with the head to the west facing east. Secondary elements were found in the pit fill of #2022, which were given lot #2118. The following grave goods for burial lot #2022 were recovered; buttons and glass fragments. The following grave goods were recovered from lot #2118; glass fragments and buttons.

Burial lot #2023 was located in Area C with the coordinates in the NW corner of the coffin N254'11" W70'9". The elevation at the base of the coffin in the NW corner was 744.34 famsl. The 6 sided adult coffin (78" x 18") contained the remains of 1 individual. The primary individual was face up with the head to the west facing east. Secondary elements were found in the pit fill of #2023, which were given lot #2110. The following grave goods for burial lot #2023 were recovered; a possible sharpening stone. No grave goods were recovered for lot #2210.

Burial lot #2024 was located in Area C with the coordinates in the NW corner of the coffin N259'3" W70'1". The elevation at the base of the coffin in the NW corner was 744.34 famsl. The 6 sided adult coffin (78" x 18") contained the remains of 3 individuals. The primary individual was face up with the head to the west facing east. Secondary burials were found in the pit of lot #2024. Miscellaneous skeletal elements from the pit fill were given lot #2119. The bones of a second adult (lot #2120) were within the coffin of lot #2024, as well as a sub-adult given lot #2121. No grave goods for burial lot #2024, 2119, 2120, or 2121 were recovered.

Burial lot #2025 was located in Area C with the coordinates in the NW corner of the coffin N269'7" W70'11". The elevation at the base of the coffin in the NW corner was 743.11 famsl. The 6 sided adult coffin (73" x 17") contained the remains of 1 individual. The primary individual was face up with the head to the west facing east. Secondary elements were found in the pit fill of #2025, which were given lot #2085. The following grave goods for burial lot #2025 were recovered; a glass bottle and a safety pin. No grave goods were recovered from lot #2085.

Burial lot #2026 was located in Area C with the coordinates in the NW corner of the coffin N274'1" W72'4". The elevation at the base of the coffin in the NW corner was 742.85 famsl. The 6 sided adult coffin (81" x 15") contained the remains of more than one individual. The primary individual was face up with the head to the west facing east. Secondary elements were found in the pit fill of #2026, which were given lot #2086. Miscellaneous skeletal elements were also included within the coffin of burial lot #2026, which were given lot #2100. The following grave goods for burial lot #2026 and #2100 were recovered; buttons, a spike, and a small amount of cloth. The following grave goods were recovered from lot #2086; a button.

Burial lot #2027 was located in Area C with the coordinates in the NW corner of the coffin N281'10" W70'0". The elevation at the base of the coffin in the NW corner was 742.27 famsl. The 6 sided adult coffin (66" x 17") contained the remains of 1 individual. The primary individual was face up with the head to the west facing east. No grave goods for burial lot #2027 were recovered.

Burial lot #2028 was located in Area C with the coordinates in the NW corner of the coffin N285'5" W71'0". The elevation at the base of the coffin in the NW corner was 741.63 famsl. The 6 sided adult coffin (63" x 17") contained the remains of 1 individual. The primary individual was face up with the head to the west facing east. No grave goods for burial lot #2028 were recovered.

Burial lot #2029 was located in Area C with the coordinates in the NW corner of the coffin N289'4" W71'4". The elevation at the base of the coffin in the NW corner was 741.41 famsl. The 6 sided adult coffin (79" x 19") contained the remains of 1 individual. The primary individual was face up with the head to the west facing east. No grave goods for burial lot #2028 were recovered.

Burial lot #2030 was located in Area C with the coordinates in the NW corner of the coffin N286'6" W77'9". The elevation at the base of the coffin in the NW corner was 742.25 famsl. The adult coffin (of indeterminate size and shape due to damage to coffin) contained the remains of 1 individual. The primary individual was face up with the head to the west facing east. No grave goods for burial lot #2030 were recovered.

Burial lot #2031 was located in Area C with the coordinates in the NW corner of the coffin N290'0" W79'0". The elevation at the base of the coffin in the NW corner was 742.22 famsl. The coffin (of indeterminate size and shape due to its poor condition) contained the remains of 1 individual. The primary individual was face up with the head to the west facing east. The following grave goods for burial lot #2031 were recovered; scrap iron.

Burial lot #2032 was located in Area C with the coordinates in the NW corner of the coffin N293'10" W77'0". The elevation at the base of the coffin in the NW corner was 742.77 famsl. The 6 sided coffin (of indeterminate size and shape due to damage done by steam tunnel) contained the remains of 1 individual. The primary individual was face up with the head to the west facing east. The following grave goods for burial lot #2032 were recovered; cloth.

Burial lot #2033 was located in Area C with the coordinates in the NW corner of the coffin N205'3" W65'5". The elevation at the base of the coffin in the NW corner was 744.52 famsl. The 6 sided adult coffin (69" x 18") contained the remains of 1 individual. The primary individual was face up with the head to the west facing east. Associated lot #2147 was skeletal elements from the pit fill. No grave goods for burial lot #2033 or 2147 were recovered.

Burial lot #2034 was located in Area C with the coordinates in the NW corner of the coffin N209'11" W58'9". The elevation at the base of the coffin in the NW corner was 744.39 famsl. The adult coffin (which was heavily disturbed by a garbage midden) contained the remains of 1 individual. The primary individual was in an indeterminate position. Secondary elements were found in the pit fill of #2034, which were given lot #2154. No grave goods for burial lot #2034 or #2154 were recovered.

Burial lot #2035 was located in Area C with the coordinates in the NW corner of the coffin N213'6" W59'6". The elevation at the base of the coffin in the NW corner was 743.83 famsl. The coffin (of indeterminate size and shape due to disturbance by a pipe trench) contained the remains of 1 individual. The primary individual was indeterminately situated within the burial. No grave goods for burial lot #2035 were recovered.

Burial lot #2036 was located in Area C with the coordinates in the NW corner of the coffin N217'0" W62'8". The elevation at the base of the coffin in the NW corner was 744.29 famsl. The adult coffin (of indeterminate size and shape due a garbage midden) contained the remains of 1 individual. The primary individual was face up with the head to the west facing east. Secondary elements were found in the pit fill of #2036, and in an associated trench, which were given lot #2146 and #2144 respectively. The following grave goods for burial lot #2036 were recovered; a .22 bullet casing. Lots #2144 and #2146 contained no grave goods.

Burial lot #2037 was located in Area C with the coordinates in the NW corner of the coffin N221'0" W62'6". The elevation at the base of the coffin in the NW corner was 744.49 famsl. The 6 sided adult coffin (68" x 18") contained the remains of 1 individual. The primary individual was face up with the head to the west facing east. Secondary elements were found in the pit fill of #2037, which were given lot #2132. The following grave goods for burial lot #2037 were recovered; buttons. No grave goods were found in lot #2132.

Burial lot #2038 was located in Area C with the coordinates in the NW corner of the coffin N224'8" W62'4". The elevation at the base of the coffin in the NW corner was 744.64 famsl. The 6 sided adult coffin (69" x 18") contained the remains of 1 individual. The primary individual was face up with the head to the west facing east. Secondary elements were found in the pit fill of #2038, which were given lot #2130. No grave goods for burial lot #2038 or #2130 were recovered.

Burial lot #2039 was located in Area C with the coordinates in the NW corner of the coffin N228'4" W62'2". The elevation at the base of the coffin in the NW corner was 744.18 famsl. The 6 sided adult coffin (75" x 19") contained the remains of 1 individual. The primary individual was face up with the head to the west facing east. Secondary elements were found in the pit fill of #2039, which were given lot #2105. The following grave goods for burial lot #2039 were recovered; glass fragments and a ceramic base of a vessel. No grave goods were recovered from lot #2105.

Burial lot #2040 was located in Area C with the coordinates in the NW corner of the coffin N231'10" W61'9". The elevation at the base of the coffin in the NW corner was 744.34 famsl. The 6 sided adult coffin (76" x 19") contained the remains of 1 individual. The primary individual was face up with the head to the west facing east. Secondary elements were found in the pit fill of #2040, which were given lot #2108. The following grave goods for burial lot #2040 were recovered; cloth, buttons, and safety pins. No grave goods were recovered in lot #2108.

Burial lot #2041 was located in Area C with the coordinates in the NW corner of the coffin N235'4" W61'2". The elevation at the base of the coffin in the NW corner was 743.93 famsl. The 6 sided adult coffin (72" x 18") contained the remains of 1 individual. The primary individual was face up with the head to the west facing east. Secondary elements were found in the pit fill of #2041, which were given lot #2102. The following grave goods for burial lot #2041 were recovered; a safety pin. No grave goods were recovered from lot #2102.

Burial lot #2042 was located in Area C with the coordinates in the NW corner of the coffin N239'1" W60'5". The elevation at the base of the coffin in the NW corner was 744.10 famsl. The 6 sided adult coffin (71" x 20") contained the remains of 1 individual. The primary individual was face up with the head to the west facing east. Secondary elements were found in the pit fill of #2042, which were given lot #2106. The following grave goods for burial lot #2041 were recovered; a safety pin. No grave goods were recovered from lot #2106.

Burial lot #2043 was located in Area C with the coordinates in the NW corner of the coffin N246'2" W60'4". The elevation at the base of the coffin in the NW corner was 744.31 famsl. The 6 sided adult coffin (74" x 19") contained the remains of 1 individual. The primary individual was face up with the head to the west facing east. Secondary elements were found in the pit fill of #2043, which were given lot #2103. The following grave goods for burial lot #2041 were recovered; a white glass button. No grave goods were recovered from lot #2103.

Burial lot #2044 was located in Area C with the coordinates in the NW corner of the coffin N250'0" W61'1". The elevation at the base of the coffin in the NW corner was 743.93 famsl. The 6 sided adult coffin (78" x 19") contained the remains of 1 individual. The primary individual was face up with the head to the west facing east. Secondary elements were found in the pit fill of #2044, which were given lot #2109. The following grave goods for burial lot #2044 were recovered; a safety pin, a glass jar with lid, microscope slides, a petri lid, and a bottom of a glass bottle. No grave goods were recovered from lot #2109.

Burial lot #2045 was located in Area C with the coordinates in the NW corner of the coffin N252'11" W61'10". The elevation at the base of the coffin in the NW corner was 743.77 famsl. The 6 sided adult coffin (75" x 21") contained the remains of 1 individual. The primary individual was face up with the head to the west facing east. Secondary elements were found in the pit fill of #2045, which were given lot #2107. The following grave goods for burial lot #2041 were recovered; a glass vial, glass bottle, microscope slides, and a wooden hair piece. No grave goods were recovered from lot #2107.

Burial lot #2046 was located in Area C with the coordinates in the NW corner of the coffin N263'9" W61'9". The elevation at the base of the coffin in the NW corner was 742.90 famsl. The 6 sided adult coffin (73" x 19") contained the remains of 1 individual. The primary individual was face up with the head to the west facing east. No grave goods for burial lot #2046 were recovered.

Burial lot #2047 was located in Area C with the coordinates in the NW corner of the coffin N268'2" W62'2". The elevation at the base of the coffin in the NW corner was 742.37 famsl. The 6 sided adult coffin (72" x 16") contained the remains of 1 individual. The primary individual was face up with the head to the west facing east. The following grave goods for burial lot #2047 were recovered; a button.

Burial lot #2048 was located in Area C with the coordinates in the NW corner of the coffin N271'5" W62'. The elevation at the base of the coffin in the NW corner was 742.40 famsl. The 6 sided adult coffin (72" x 16") contained the remains of 1 individual. The primary individual was face up with the head to the west facing east. Secondary elements were found in the pit fill of #2048, which were given lot #2092. The following grave goods for burial lot #2048 were recovered; a portion of a grave marker. No grave goods were recovered from lot #2092.

Burial lot #2049 was located in Area C with the coordinates in the NW corner of the coffin N275'7" W62'3". The elevation at the base of the coffin in the NW corner was 741.96 famsl. The 6 sided adult coffin (75" x 18") contained the remains of 1 individual. The primary individual was face up with the head to the west facing east. No grave goods for burial lot #2049 were recovered.

Burial lot #2050 was located in Area C with the coordinates in the NW corner of the coffin N278'9" W62'6". The elevation at the base of the coffin in the NW corner was 741.49 famsl. The 6 sided adult coffin (74" x 18") contained the remains of 1 individual. The primary individual was face up with the head to the west facing east. The following grave goods for burial lot #2050 were recovered; a cross and a ring.

Burial lot #2051 was located in Area C with the coordinates in the NW corner of the coffin N283'7" W62'3". The elevation at the base of the coffin in the NW corner was 741.56 famsl. The 6 sided adult coffin (72" x 16") contained the remains of 1 individual. The primary individual was face up with the head to the west facing east. Secondary elements were found in the pit fill of #2051, which were given lot #2090. No grave goods for burial lot #2051 were recovered. The following grave goods were recovered from lot #2090; a button.

Burial lot #2052 was located in Area C with the coordinates in the NW corner of the coffin N288'4" W63'3". The elevation at the base of the coffin in the NW corner was 740.99 famsl. The 6 sided adult coffin (71" x 17") contained the remains of 1 individual. The primary individual was face up with the head to the west facing east. No grave goods for burial lot #2052 were recovered.

Burial lot #2053 was located in Area C with the coordinates in the NW corner of the coffin N203'9" W56'0". The elevation at the base of the coffin in the NW corner was 743.50 famsl. The 6 sided adult coffin (of indeterminate length x 18") contained the remains of 1 individual. The primary individual was face up with the head to the west facing east. Burial lot #2152 was located below #2053, which was an adult burial in an indeterminate type coffin. No grave goods for burial lot #2053 or #2152 were recovered.

Burial lot #2054 was located in Area C with the coordinates in the NW corner of the coffin N207'0" W55'10". The elevation at the base of the coffin in the NW corner was 743.71 famsl. The 6 sided adult coffin (72" x 18") contained the remains of 1 individual. The primary individual was face up with the head to the west facing east. Secondary elements were found below the coffin #2054, which were given lot #2151. No grave goods for burial lot #2054 were recovered. The following grave goods were recovered from lot #2151; a button.

Burial lot #2055 was located in Area C with the coordinates in the NW corner of the coffin N210'11" W55'1". The elevation at the base of the coffin in the NW corner was 743.14 famsl. The 6 sided adult coffin (75" x 14") contained the remains of 1 individual. The primary individual was face up with the head to the west facing east. Secondary elements were found in the pit fill of #2055, which were given lot #2148. Burial lot #2153 was located below #2055, which was an adult burial in an indeterminate type coffin. The following grave goods for burial lot #2055 were recovered: safety pins and an iron plate. The following grave goods were recovered from lot #2148: a straight pin. No grave goods were recovered from lot #2153

Burial lot #2056 was located in Area C with the coordinates in the NW corner of the coffin N214'7" W54'5". The elevation at the base of the coffin in the NW corner was 744.43 famsl. The adult coffin (of indeterminate size and shape due to its poor condition) contained the remains of 1 individual. The primary individual was face up with the head to the west facing east. Burial lot #2145 was located below #2056. This was an indeterminate coffin with adult elements within. Lot #2158 was a pit below #2056 which contained secondary skeletal elements. No grave goods for burial lot #2056 and #2158 were recovered. Burial #2145 had, as grave goods, buttons.

Burial lot #2057 was located in Area C with the coordinates in the NW corner of the coffin N219'0" W54'0". The elevation at the base of the coffin in the NW corner was 744.74 famsl. The coffin (of indeterminate size and shape) contained the remains of 1 individual of indeterminate age and sex. The primary individual was face up with the head to the west facing east. Secondary elements were found in the pit fill of #2057, which were given lot #2155. No grave goods for burial lot #2057 and #2155 were recovered.

Burial lot #2058 was located in Area C with the coordinates in the NW corner of the coffin N223'0" W53'9". The elevation at the base of the coffin in the NW corner was 744.40 famsl. The adult coffin (of indeterminate size and shape) contained the remains of 1 individual. The primary individual was indeterminately situated within the coffin. Secondary elements were found in the pit fill of #2058, which were given lot #2104. Burial lot #2156 was located below #2058, which was indeterminate skeletal elements. The following grave goods for burial lot #2058 were recovered: glass fragments, a nickel, and a lid. The following grave goods were recovered from lot #2104: an iron maul head. No grave goods recovered from lot #2156.

Burial lot #2059 was located in Area C with the coordinates in the NW corner of the coffin N226'4" W52'8". The elevation at the base of the coffin in the NW corner was 744.27 famsl. The coffin (of indeterminate size and shape) contained the remains of 1 individual of indeterminate age and sex. The primary individual was in an unknown position due to the poor condition of the burial. Burial lot #2157 was located below #2059, which was secondary skeletal elements of indeterminate sex and age. No grave goods for burial lot #2059 or #2157 were recovered.

Burial lot #2060 was located in Area C with the coordinates in the NW corner of the coffin N230'7" W50'5". The elevation at the base of the coffin in the NW corner was 744.21 famsl. The coffin (of indeterminate size and shape) contained the remains of 1 individual of indeterminate age and sex. The primary individual was in an unknown position within the coffin. No grave goods were recovered for burial lot #2060.

Burial lot #2061 was located in Area C with the coordinates in the NW corner of the coffin N234'1" W51'6". The elevation at the base of the coffin in the NW corner was 743.54 famsl. The 6 sided adult coffin (69" x 23") contained the remains of 1 individual. The primary individual was face up with the head to the west facing east. No goods for burial lot #2061 were recovered.

Burial lot #2062 was located in Area C with the coordinates in the NW corner of the coffin N278'4" W71'11". The elevation at the base of the coffin in the NW corner was 740.96 famsl. The adult coffin (80" x 20") contained the remains of 1 individual. The primary individual was face up with the head to the west facing east. The following grave goods for burial lot #2062 were recovered: buttons, suspender adjuster, shoes, and a bottle stopper.

Burial lot #2063 was located in Area C with the coordinates in the NW corner of the coffin N237'8" W50'8". The elevation at the base of the coffin in the NW corner was 743.50 famsl. The coffin contained the remains of 1 individual. The primary individual was of indeterminate age and sex. The following grave goods for burial lot #2063 were recovered: buttons.

Burial lot #2068 was located in Area C with the coordinates in the NW corner of the coffin N244'11" W49'9". The elevation at the base of the coffin in the NW corner was 743.45 famsl. The 6 sided adult coffin (73" x 18") contained the remains of 1 individual. The primary individual was face up with the head to the west facing east. Secondary elements were found in the pit fill of #2064, which were given lot #2098. The following grave goods for burial lot #2068 were recovered: buttons, wire, and a cuff link. No grave goods were recovered from lot #2098.

Burial lot #2065 was located in Area C with the coordinates in the NW corner of the coffin N248'10" W49'6". The elevation at the base of the coffin in the NW corner was 743.35 famsl. The 6 sided adult coffin (77" x 16") contained the remains of 1 individual. The primary individual was face up with the head to the west facing east. Secondary elements were found in the pit fill of #2065, which were given lot #2160. No grave goods for burial lot #2065 or #2160 were recovered.

Burial lot #2066 was located in Area C with the coordinates in the NW corner of the coffin N252'6" W50'1". The elevation at the base of the coffin in the NW corner was 743.93 famsl. The 6 sided adult coffin (76" x 20") contained the remains of 1 individual. The primary individual was face up with the head to the west facing east. Secondary elements were found in the pit fill of #2066, which were given lot #2097. The following grave goods for burial lot #2066 were recovered; buttons, buckles, shoe eyelets, and pipe stems. No grave goods were recovered from lot #2097.

Burial lot #2067 was located in Area C with the coordinates in the NW corner of the coffin N254'7" W49'5". The elevation at the base of the coffin in the NW corner was 743.93 famsl. The indeterminately shaped adult coffin (72" x 15") contained the remains of 1 individual. The primary individual was face up with the head to the west facing east. Secondary elements were found in the pit fill of #2067, which were given lot #2101. The following grave goods for burial lot #2067 were recovered: buttons. No grave goods were recovered from lot #2101.

Burial lot #2068 was located in Area C with the coordinates in the NW corner of the coffin N260'10" W49'6". The elevation at the base of the coffin in the NW corner was 742.64 famsl. The 6 sided adult coffin (78" x 20") contained the remains of 1 individual. The primary individual was face up with the head to the west facing east. Secondary elements were found in the pit fill of #2068, which were given lot #s 2091 and 2099. The following grave goods for burial lot #2068 were recovered: buttons, belt buckle, cloth, nickels, snaps, and iron and copper fragments. The following grave goods were found in lot #2091: a bottle neck. No grave goods were recovered from lot #2099.

Burial lot #2069 was located in Area C with the coordinates in the NW corner of the coffin N265'3" W49'1". The elevation at the base of the coffin in the NW corner was 743.43 famsl. The 6 sided adult coffin (74" x 19") contained the remains of 1 individual. The primary individual was face up with the head to the west facing east. Secondary elements were found in the pit fill of #2069, which were given lot #2094. The following grave goods for burial lot #2069 were recovered: a safety pin and buttons. No grave goods were recovered from lot #2094.

Burial lot #2070 was located in Area C with the coordinates in the NW corner of the coffin N274'5" W52'6". The elevation at the base of the coffin in the NW corner was 741.49 famsl. The 6 sided adult coffin (72" x 17") contained the remains of 1 individual. The primary individual was face up with the head to the west facing east. The following grave goods for burial lot #2070 were recovered: a surgical pin.

Burial lot #2071 was located in Area C with the coordinates in the NW corner of the coffin N278'2" W54'0". The elevation at the base of the coffin in the NW corner was 741.12 famsl. The 8 sided adult coffin (73" x 19") contained the remains of 1 individual. The primary individual was face up with the head to the west facing east. Secondary elements were found in the pit fill of #2071, which were given lot #2082. The following grave goods for burial lot #2071 were recovered: a safety pin, pocket knife, buttons, cuff links, snaps, and a pencil. No grave goods were recovered from lot #2082.

Burial lot #2072 was located in Area C with the coordinates in the NW corner of the coffin N283'0" W53'4". The elevation at the base of the coffin in the NW corner was 745.77 famsl. The 6 sided adult coffin (77" x 20") contained the remains of 1 individual. The primary individual was face up with the head to the west facing east. No grave goods for burial lot #2072 were recovered.

Burial lot #2073 was located in Area C with the coordinates in the NW corner of the coffin N287'5" W55'0". The elevation at the base of the coffin in the NW corner was 740.19 famsl. The 6 sided adult coffin (72" x indeterminate due to disturbance.) contained the remains of 1 individual. The primary individual was face up with the head to the west facing east. No grave goods for burial lot #2073 were recovered.

Burial lot #2074 was located in Area C with the coordinates in the NW corner of the coffin N273'11" W45'3". The elevation at the base of the coffin in the NW corner was 741.10 famsl. The 6 sided adult coffin (63" x 20") contained the remains of 1 individual. The primary individual was face up with the head to the west facing east. The following grave goods for burial lot #2074 were recovered: a safety pin and a glass fragment.

Burial lot #2075 was located in Area C with the coordinates in the NW corner of the coffin N278'3" W45'4". The elevation at the base of the coffin in the NW corner was 740.73 famsl. The 6 sided adult coffin (72" x 18") contained the remains of 1 individual. The primary individual was face up with the head to the west facing east. The following grave goods for burial lot #2075 were recovered: leather, wire, and scrap iron.

Burial lot #2076 was located in Area C with the coordinates in the NW corner of the coffin N283'2" W45'3". The elevation at the base of the coffin in the NW corner was 739.85 famsl. The 6 sided adult coffin (74" x 17") contained the remains of 1 individual. The primary individual was face up with the head to the west facing east. The following grave goods for burial lot #2076 were recovered: paper fragments.

Burial lot #2077 was located in Area C with the coordinates in the NW corner of the coffin N286'9" W46'9". The elevation at the base of the coffin in the NW corner was 739.92 famsl. The 6 sided adult coffin (75" x 18") contained the remains of 1 individual. The primary individual was face up with the head to the west facing east. Secondary elements were recovered from the pit fill of lot #2077, and given lot #2083. No grave goods for burial lot #2077 were recovered. No grave goods were recovered from lot #2083.

Burial lot #2078 was located in Area C with the coordinates in the NW corner of the coffin N273'9" W36'9". The elevation at the base of the coffin in the NW corner was 740.16 famsl. The adult coffin (of indeterminate size and shape due to disturbance) contained the remains of 1 individual. The primary individual was disturbed in the coffin and original position is indeterminate. No grave goods for burial lot #2078 were recovered.

Burial lot #2079 was located in Area C with the coordinates in the NW corner of the coffin N278'11" W36'10". The elevation at the base of the coffin in the NW corner was 739.71 famsl. The 6 sided adult coffin (69" x 18") contained the remains of 1 individual. The primary individual was in an indeterminate position within the coffin due to poor preservation. No grave goods for burial lot #2079 were recovered.

Burial lot #2081 was located in Area C with the coordinates in the NW corner of the coffin N286'7" W37'11". The elevation at the base of the coffin in the NW corner was 739.20 famsl. The 6 sided adult coffin (72" x 21") contained the remains of 1 individual. The primary individual was face up with the head to the west facing east. No grave goods for burial lot #2081 were recovered.

Burial lot #2084 was located in Area C with the coordinates in the NW corner of the coffin N269'1" W44'9". The elevation at the base of the coffin in the NW corner was 742.59 famsl. The coffin (of indeterminate size and shape) contained the remains of 1 individual of indeterminate age and position within the coffin. No grave goods for burial lot #2084 were recovered.

Burial lot #2087 was located in Area C with the coordinates in the NW corner of the coffin N270'0" W53'10". The elevation at the base of the coffin in the NW corner was 741.97 famsl. The 6 sided adult coffin (78" x 17") contained the remains of 1 individual. The primary individual was face up with the head to the west facing east. No grave goods for burial lot #2084 were recovered.

Burial lot #2088 was located in Area C with the coordinates in the NW corner of the coffin N265'5" W70'11". The elevation at the base of the coffin in the NW corner was 743.46 famsl. The 6 sided adult coffin (67" x 18") contained the remains of 1 individual. The primary individual was face up with the head to the west facing east. Secondary elements were found in the pit fill of #2088, which were given lot #s 2089 and 2113. The following grave goods for burial lot #2088 were recovered: glass fragments and boots. No grave goods were recovered from lot #s 2089 or 2113.

Burial lot #2093 was located in Area C with the coordinates in the NW corner of the coffin N261'9" W70'9". The elevation at the base of the coffin in the NW corner was 744.04 famsl. The 6 sided adult coffin (74" x 17") contained the remains of 1 individual. The primary individual was face up with the head to the west facing east. Secondary elements were found in the pit fill of #2093, which were given lot #2124. No grave goods for burial lot #2093 or #2124 were recovered.

Burial lot #2095 was located in Area C with the coordinates in the NW corner of the coffin N259'2" W61'8". The elevation at the base of the coffin in the NW corner was 743.61 famsl. The 6 sided adult coffin (74" x 17") contained the remains of 1 individual. The primary individual was face up with the head to the west facing east. No grave goods for burial lot #2095 were recovered.

Burial lot #2096 was located in Area C with the coordinates in the NW corner of the coffin N241'11" W48'11". The elevation at the base of the coffin in the NW corner was 743.89 famsl. No coffin was not present due to poor preservation, but the remains of 1 individual were present. The primary individual was in an indeterminate position within the coffin. No grave goods for burial lot #2096 were recovered.

Burial lot #2129 was located in Area C with the coordinates in the NW corner of the coffin N227'5" W71'5". The elevation at the base of the coffin in the NW corner was 744.98 famsl. The 6 sided adult coffin (of indeterminate size due to disturbance) contained the remains of 1 individual. The primary individual was face up with the head to the west facing east. Secondary elements were found in the pit fill of #2129, which were given lot #2133. The following grave goods for burial lot #2129 were recovered: a snap, a button, a bead, and scrap iron.. No grave goods were recovered from lot #2133.

Burial lot #2137 was located in Area C with the coordinates in the NW corner of the coffin N213'9" W71'8". The elevation at the base of the coffin in the NW corner was 744.06 famsl. The adult coffin (of indeterminate size and shape due to a trench) contained the remains of 1 individual. The primary individual was face up with the head to the west facing east. Secondary elements were found in the trench cutting through #2137, which were given lot #2141. No grave goods for burial lot #2137 were recovered. The following grave goods were recovered from lot #2141: a cross and a glass fragment.

Burial lot #2138 was located in Area C with the coordinates in the NW corner of the coffin N217'10" W72'1". The elevation at the base of the coffin in the NW corner was 744.63 famsl. The 6 sided adult coffin (69" x 17") contained the remains of 1 individual. The primary individual was face up with the head to the west facing east. Secondary elements were found in the pit fill of #2138, which were given lot #2142. The following grave goods for burial lot #2138 were recovered: a safety pin. No grave goods were recovered from lot #2142.

Burial lot #2139 was located in Area C with the coordinates in the NW corner of the coffin N221'8" W71'10". The elevation at the base of the coffin in the NW corner was 744.76 famsl. The 6 sided adult coffin (76" x 18") contained the remains of 1 individual. The primary individual was face up with the head to the west facing east. Secondary elements were found in the pit fill of #2139, which were given lot #2140. No grave goods for burial lot #2139 were recovered. The following grave goods were recovered from lot #2140: safety pin fragments and cloth.

Burial lot #2145 was located in Area C with the coordinates in the NW corner of the coffin N214'7" W54'5". The elevation at the base of the coffin in the NW corner was 743.93 famsl. The 6 sided adult coffin (72" x 18") contained the remains of 1 individual. The primary individual was face up with the head to the west facing east. Secondary elements were found in the pit fill of #2041, which were given lot #2102. The following grave goods for burial lot #2041 were recovered: a safety pin. No grave goods were recovered from lot #2145.

Burial lot #3026 was located in area N with the coordinates in the NW corner of the coffin N39'2" W339'4". The elevation at the base of the coffin in the NW corner was 737.963 famsl. The 6 sided adult coffin (71.25" x 16.75") contained the remains of 1 individual. The primary individual was face up with the head to the west. There were no grave goods recovered for lot #3026.

Burial lot #3028 was located in area N with the coordinates in the NW corner of the coffin N328'1" W36'0". The elevation at the base of the coffin in the NW corner was 737.443 famsl. The 6 sided adult coffin (72" x 18.50") contained the remains of 1 individual. The primary individual was face up with the head to the west. There were no grave goods recovered for lot #3026.

Burial lot #3029 was located in area N with the coordinates in the NW corner of the coffin N331'9" W35'7". The elevation at the base of the coffin in the NW corner was 737.383 famsl. The 6 sided adult coffin (69" x 14") contained the remains of 1 individual. The primary individual was face up with the head to the west. There were no grave goods recovered for lot #3029.

Burial lot #3030 was located in area N with the coordinates in the NW corner of the coffin N329'2" W37'9". The elevation at the base of the coffin in the NW corner was 737.453 famsl. The 6 sided adult coffin (57" x 25") contained the remains of 1 individual. The primary individual placed indeterminately in the coffin with the head to the west. There were no grave goods recovered for lot #3030.

Burial lot #3031 was located in area N with the coordinates in the NW corner of the coffin N335'10" W35'6". The elevation at the base of the coffin in the NW corner was 737.003 famsl. The 6 sided adult coffin (74.3" x 20.1") contained the remains of 1 individual. The primary individual was face up with the head to the west. The following grave goods were recovered for lot #3031: one button.

Burial lot #3032 was located in area N with the coordinates in the NW corner of the coffin N339'5" W32'11". The elevation at the base of the coffin in the NW corner was 737.273 famsl. The 6 sided adult coffin (63" x 24") contained the remains of 1 individual. The primary individual was face up with the head to the west. There were no grave goods recovered for lot #3032.

Burial lot #3033 was located in area N with the coordinates in the NW corner of the coffin N359'0" W46'11". The elevation at the base of the coffin in the NW corner was 738.423 famsl. The 6 sided adult coffin (6.2' x 17") contained the remains of 1 individual. The primary individual was face up with the head to the west. There were no grave goods recovered for lot #3033.

Burial lot #3034 was located in area N with the coordinates in the NW corner of the coffin N333'5" W31'6". The elevation at the base of the coffin in the NW corner was 737.233 famsl. The 6 sided adult coffin (48" x 18") contained the remains of 1 individual. The bulk of the skeletal structure was missing . There were no grave goods recovered for lot #3034.

Burial lot #3035 was located in area N with the coordinates in the NW corner of the coffin N347'3" W31'6". The elevation at the base of the coffin in the NW corner was 736.893 famsl. The 6 sided adult coffin (57" x 20") contained the remains of 1 individual. The primary individual was face up with the head to the west. There were no grave goods recovered for lot #3035.

Burial lot #3036 was located in area N with the coordinates in the NW corner of the coffin N350'9" W31'10". The elevation at the base of the coffin in the NW corner was 376.773 famsl. The 6 sided adult coffin (65" x 18") contained the remains of 1 individual. The primary individual was face up with the head to the west. There were no grave goods recovered for lot #3036.

Burial lot #3051 was located in area N with the coordinates in the NW corner of the coffin N349'11" W49'6". The elevation at the base of the coffin in the NW corner was 738.043 famsl. The 6 sided adult coffin (72" x 16") contained the remains of 1 individual. The primary individual was face up with the head to the west facing east. There were no grave goods recovered for lot #3051.

Burial lot #3052 was located in area N with the coordinates in the NW corner of the coffin N326'3" W50'3". The elevation at the base of the coffin in the NW corner was 737.993 famsl. The 6 sided adult coffin (70" x 17") contained the remains of 1 individual. The primary individual was face up with the head to the west facing east. There were no grave goods recovered for lot #3052.

Burial lot #3053 was located in area N with the coordinates in the NW corner of the coffin N332'6" W52'6". The elevation at the base of the coffin in the NW corner was 738.073 famsl. The adult coffin type is indeterminate (71" x 19") and it contained the remains of 1 individual. The primary individual was face up with the head to the west. There were no grave goods recovered for lot #3053.

Burial lot #3054 was located in area N with the coordinates in the NW corner of the coffin N358'10" W55'0". The elevation at the base of the coffin in the NW corner was 739.123 famsl. The 6 sided adult coffin (74" x 15") contained the remains of 1 individual. The primary individual was face up with the head to the west. There were no grave goods recovered for lot #3054.

Burial lot #3055 was located in area N with the coordinates in the NW corner of the coffin N355'6" W55'6". The elevation at the base of the coffin in the NW corner was 738.703 famsl. The 6 sided adult coffin (" x 18") contained the remains of 1 individual. The primary individual was face up with the head to the right. The following grave goods for lot #3055 were recovered: one safety pin.

Burial lot #3056 was located in area N with the coordinates in the NW corner of the coffin N351'8" W55'6". The elevation at the base of the coffin in the NW corner was 739.043 famsl. The 6 sided adult coffin (65" x 18") contained the remains of 1 individual. The primary individual was face up with the head to the west. There were no grave goods recovered for lot #3056.

Burial lot #3057 was located in area N with the coordinates in the NW corner of the coffin N348'5" W56'9". The elevation at the base of the coffin in the NW corner was 739.203 famsl. The 6 sided adult coffin (71" x 15") contained the remains of 1 individual. The primary individual was placed indeterminately in the coffin with the head to the west. The following grave goods for lot #3057 were recovered: fragments of a safety pin and a unidentified iron piece.

Burial lot #3058 was located in area N with the coordinates in the NW corner of the coffin N344'3" W56'7". The elevation at the base of the coffin in the NW corner was 738.813 famsl. The 6 sided adult coffin (69.5" x 16.5") contained the remains of 1 individual. The primary individual was face up with the head to the west facing south. The following grave goods for lot #3058 were recovered: fragments of a safety pin.

Burial lot #3059 was located in area N with the coordinates in the NW corner of the coffin N340'11" W57'6". The elevation at the base of the coffin in the NW corner was 738.833 famsl. The 6 sided adult coffin (69" x 17") contained the remains of 1 individual. The primary individual was between face up and lying on the right side with a crushed skull so it is indeterminate which way it is facing. There were no grave goods recovered for lot #3059.

Burial lot #3060 was located in area N with the coordinates in the NW corner of the coffin N362'7" W54'0". The elevation at the base of the coffin in the NW corner was 738.473 famsl. The 6 sided adult coffin (75" x 20") contained the remains of 1 individual. The primary individual was face up with the head to the west. There were no grave goods recovered for lot #3060.

Burial lot #3061 was located in area N with the coordinates in the NW corner of the coffin N366'9" W53'4". The elevation at the base of the coffin in the NW corner was 738.083 famsl. The 6 sided adult coffin (77" x 20") contained the remains of 1 individual. The primary individual was face up with the head to the west. There were no grave goods recovered for lot #3061.

Burial lot #3062 was located in area N with the coordinates in the NW corner of the coffin N370'7" W52'3". The elevation at the base of the coffin in the NW corner was 738.103 famsl. The 6 sided adult coffin (75" x 18") contained the remains of 1 individual. The primary individual was face up with the head to the west. There were no grave goods recovered for lot #3062.

Burial lot #3063 was located in area N with the coordinates in the NW corner of the coffin N370'5" W44'5". The elevation at the base of the coffin in the NW corner was 737.723 famsl. The 6 sided adult coffin (68" x 17") contained the remains of 1 individual. The primary individual was face up with the head to the west. The following grave goods for lot #3063 were recovered: fragments from three safety pins.

Burial lot #3064 was located in area N with the coordinates in the NW corner of the coffin N366'3" W45'87". The elevation at the base of the coffin in the NW corner was 737.873 famsl. The 6 sided adult coffin (76" x 17") contained the remains of 1 individual. The primary individual was face up with the head to the west. There were no grave goods recovered for lot #3064.

Burial lot #3037 was located in area N with the coordinates in the NW corner of the coffin N354'9" W39'9". The elevation at the base of the coffin in the NW corner was 736.523 famsl. The 6 sided adult coffin (45" x 18") contained the remains of 1 individual. The primary individual was face up with the head to the west facing south. There were no grave goods recovered for lot #3037.

Burial lot #3038 was located in area N with the coordinates in the NW corner of the coffin N358' W36'2". The elevation at the base of the coffin in the NW corner was 736.723 famsl. The 6 sided adult coffin (178" x 40") contained the remains of 1 individual. The primary individual was face up with the head to the west. There were no grave goods recovered for lot #3038

Burial lot #3039 was located in area N with the coordinates in the NW corner of the coffin N358'5" W38'5". The elevation at the base of the coffin in the NW corner was 737.463 famsl. The 6 sided adult coffin (75" x 18") contained the remains of 1 individual. The primary individual was on the right side with the head to the west. The following grave goods were recovered for lot #3039: one safety pin.

Burial lot #3040 was located in area N with the coordinates in the NW corner of the coffin N354'8" W38'1". The elevation at the base of the coffin in the NW corner was 737.133 famsl. The 6 sided adult coffin (53" x 14") contained disarticulated burial parts. There were no grave goods recovered for lot #3040.

Burial lot #3041 was located in area N with the coordinates in the NW corner of the coffin N351'3" W40'0". The elevation at the base of the coffin in the NW corner was 737.653 famsl. The 6 sided adult coffin (74" x 18") contained the remains of 1 individual. The primary individual was face up with the head to the west. There were no grave goods recovered for lot #3041.

Burial lot #3042 was located in area N with the coordinates in the NW corner of the coffin N347'7" W39'6". The elevation at the base of the coffin in the NW corner was 737.813 famsl. The 6 sided adult coffin (75" x 20") contained the remains of 1 individual. The primary individual was face up with the head to the west. There were no grave goods recovered for lot #3042.

Burial lot #3043 was located in area N with the coordinates in the NW corner of the coffin N343'10" W39'9". The elevation at the base of the coffin in the NW corner was 737.873 famsl. The 6 sided adult coffin (72" x 17") contained the remains of 1 individual. The primary individual was face up with the head to the north. There were no grave goods recovered for lot #3043.

Burial lot #3044 was located in area N with the coordinates in the NW corner of the coffin N339'6" W41'3". The elevation at the base of the coffin in the NW corner was 737.723 famsl. The 6 sided adult coffin (73" x 20") contained the remains of 1 individual. The primary individual was face up with the head to the west. There were no grave goods recovered for lot #3044.

Burial lot #3045 was located in area N with the coordinates in the NW corner of the coffin N332'0" W44'2". The elevation at the base of the coffin in the NW corner was 737.923 famsl. The 6 sided adult coffin (72" x 19") contained the remains of 1 individual. The primary individual was face up with the head to the west. There were no grave goods recovered for lot #3045.

Burial lot #3046 was located in area N with the coordinates in the NW corner of the coffin N328'6" W43'4". The elevation at the base of the coffin in the NW corner was 737.803 famsl. The 6 sided adult coffin (70" x 16") contained the remains of 1 individual. The primary individual was face up with the head to the west facing east. There were no grave goods recovered for lot #3046.

Burial lot #3047 was located in area N with the coordinates in the NW corner of the coffin N355'9" W47'5". The elevation at the base of the coffin in the NW corner was 738.033 famsl. The 6 sided adult coffin (79" x 21") contained the remains of 1 individual. The primary individual was placed indeterminately in the coffin. There were no grave goods recovered for lot #3047.

Burial lot #3048 was located in area N with the coordinates in the NW corner of the coffin N352'1" W47'7". The elevation at the base of the coffin in the NW corner was 737.713 famsl. The 6 sided adult coffin (77.50" x 16.50") contained the remains of 1 individual. The primary individual was face up with the head to the west. The following grave goods for lot #3048 were recovered: one safety pin.

Burial lot #3049 was located in area N with the coordinates in the NW corner of the coffin N348'0" W48'6". The elevation at the base of the coffin in the NW corner was 738.103 famsl. The 6 sided adult coffin (76" x 16") contained the remains of 1 individual. The primary individual was face up with the head to the west. The following grave goods for lot #3049 were recovered: one metal object.

Burial lot #3050 was located in area N with the coordinates in the NW corner of the coffin N343'11" W48'3". The elevation at the base of the coffin in the NW corner was 738.403 famsl. The 6 sided adult coffin (72" x 15") contained the remains of 1 individual. The primary individual was face up with the head to the west. The following grave goods for lot #3050 were recovered: one button.

Burial lot #3065 was located in area N with the coordinates in the NW corner of the coffin N362'10" W45'4". The elevation at the base of the coffin in the NW corner was 737.833 famsl. The 6 sided adult coffin (69" x 18") contained the remains of 1 individual. The primary individual was face up with the head to the west. The following grave goods for lot #3065 were recovered: one safety pin.

Burial lot #3066 was located in area N with the coordinates in the NW corner of the coffin N362'5" W38'8". The elevation at the base of the coffin in the NW corner was 737.023 famsl. The 6 sided adult coffin (78" x 17") contained the remains of 1 individual. The primary individual was face up with the head to the west. There were no grave goods recovered for lot #3066.

Burial lot #3067 was located in area N with the coordinates in the NW corner of the coffin N366'2" W37'6". The elevation at the base of the coffin in the NW corner was 736.513 famsl. The 6 sided adult coffin (73" x 17") contained the remains of 1 individual. The primary individual was face up with the head to the west. There were no grave goods recovered for lot #3067.

Burial lot #3068 was located in area N with the coordinates in the NW corner of the coffin N369'10" W36'6". The elevation at the base of the coffin in the NW corner was 736.623 famsl. The 6 sided adult coffin (66" x 15") contained the remains of 1 individual. The primary individual was face up with the head to the west. There were no grave goods recovered for lot #3068.

Burial lot #3069 was located in area N with the coordinates in the NW corner of the coffin N369'4" W28'2". The elevation at the base of the coffin in the NW corner was 736.063 famsl. The 6 sided adult coffin (76" x 17") contained the remains of 1 individual. The primary individual was face up with the head to the west. There were no grave goods recovered for lot #3069.

Burial lot #3070 was located in area N with the coordinates in the NW corner of the coffin N366'1" W29'6". The elevation at the base of the coffin in the NW corner was 736.083 famsl. The 6 sided adult coffin (66" x 18") contained the remains of 1 individual. The primary individual was face up with the head to the west. There were no grave goods recovered for lot #3070.

Burial lot #3071 was located in area N with the coordinates in the NW corner of the coffin N361'11" W30'3". The elevation at the base of the coffin in the NW corner was 736.483 famsl. The 6 sided adult coffin (75" x 19") contained the remains of 1 individual. The primary individual was face up with the head to the west. There were no grave goods recovered for lot #****.

Burial lot #3072 was located in area N with the coordinates in the NW corner of the coffin N358'1" W22'1". The elevation at the base of the coffin in the NW corner was 736.243 famsl. The 6 sided adult coffin (72" x 17") contained the remains of 1 individual. The primary individual was placed indeterminately in the coffin. There were no grave goods recovered for lot #3072.

Burial lot #3073 was located in area N with the coordinates in the NW corner of the coffin N361'6" W21'9". The elevation at the base of the coffin in the NW corner was 736.123 famsl. The 6 sided adult coffin (76" x 19.5") contained the remains of 1 individual. The primary individual was face up with the head to the west. There were no grave goods recovered for lot #3073.

Burial lot #3074 was located in area N with the coordinates in the NW corner of the coffin N366'3" W20'11". The elevation at the base of the coffin in the NW corner was 735.763 famsl. The 6 sided adult coffin (76" x 18.5") contained the remains of 1 individual. The primary individual was face down with the head to the east facing west. There were no grave goods recovered for lot #3074.

Burial lot #3075 was located in area N with the coordinates in the NW corner of the coffin N368'11" W20'3". The elevation at the base of the coffin in the NW corner was 735.443 famsl. The 6 sided sub-adult coffin (70" x 18") contained the remains of 1 individual. The primary individual was placed indeterminately in the coffin. There were no grave goods recovered for lot #3075.

Burial lot #5001 was located in area H with the coordinates in the NW corner of the coffin N307'5" E65'6". The elevation at the base of the coffin in the NW corner was 729.90 famsl. The 6 sided adult coffin (76" x 16") contained the remains of 1 individual. The primary individual was face up with the head to the west facing east. The following grave goods for burial lot #5001 were recovered: a burial I.D. tag.

Burial lot #5002 was located in area H with the coordinates in the NW corner of the coffin N347'3" E68'9". The elevation at the base of the coffin in the NW corner was 729.55 famsl. The 6 sided adult coffin (80" x 23") contained the remains of 1 individual. The primary individual was face up with the head to the west facing east. The following grave goods for burial lot #5002 were recovered: a burial I.D. tag.

Burial lot #5003 was located in area H with the coordinates in the NW corner of the coffin N343'2" E60'8". The elevation at the base of the coffin in the NW corner was 729.71 famsl. The 6 sided adult coffin (84" x 19") contained the remains of 1 individual. The primary individual was face up with the head to the west facing east. No grave goods for burial lot #5003 were recovered.

Burial lot #5004 was located in area H with the coordinates in the NW corner of the coffin N339'9" E59'10". The elevation at the base of the coffin in the NW corner was 729.85 famsl. The 6 sided adult coffin (75" x 18") contained the remains of 1 individual. The primary individual was face up with the head to the west facing east. No grave goods for burial lot #5004 were recovered.

Burial lot #5005 was located in area H with the coordinates in the NW corner of the coffin N335'9" E59'0". The elevation at the base of the coffin in the NW corner was 730.0 famsl. The 6 sided adult coffin (75" x 22") contained the remains of 1 individual. The primary individual was face up with the head to the west facing east. No grave goods for burial lot #5005 were recovered.

Burial lot #5006 was located in area H with the coordinates in the NW corner of the coffin N331'11" E59'1". The elevation at the base of the coffin in the NW corner was 730.36 famsl. The 6 sided adult coffin (18" x indeterminate length due to trench) contained the remains of 1 individual. The primary individual was face up with the head to the west facing east. No grave goods for burial lot #5006 were recovered.

Burial lot #5007 was located in area H with the coordinates in the NW corner of the coffin N328'0" E58'3". The elevation at the base of the coffin in the NW corner was 729.62 famsl. The 6 sided adult coffin (of indeterminate dimensions) contained the remains of 1 individual. The primary individual was face up with the head to the west facing east. Secondary skeletal elements were found in the pit fill of lot #5007, which were given lot #5181. The following grave goods for burial lot #5007 were recovered: a ceramic shard. No grave goods were recovered from lot #5181.

Burial lot #5008 was located in area H with the coordinates in the NW corner of the coffin N324'0" E57'8". The elevation at the base of the coffin in the NW corner was 730.20 famsl. The 6 sided adult coffin (76" x 19") contained the remains of 1 individual. The primary individual was face up with the head to the west facing east. The following grave goods for burial lot #5008 were recovered: buttons.

Burial lot #5009 was located in area H with the coordinates in the NW corner of the coffin N320'1" W57'9". The elevation at the base of the coffin in the NW corner was 730.71 famsl. The 6 sided adult coffin (74" x 16") contained the remains of 1 individual. The primary individual was face up with the head to the west facing east. No grave goods for burial lot #5009 were recovered.

Burial lot #5010 was located in area H with the coordinates in the NW corner of the coffin N314'0" E54'6". The elevation at the base of the coffin in the NW corner was 730.09 famsl. The 6 sided adult coffin (78" x 19") contained the remains of 1 individual. The primary individual was face up with the head to the west facing east. The following grave goods for burial lot #5010 were recovered: buttons.

Burial lot #5011 was located in area H with the coordinates in the NW corner of the coffin N312'4" E58'7"". The elevation at the base of the coffin in the NW corner was 730.28 famsl. The 6 sided adult coffin (of indeterminate dimensions) contained the remains of 1 individual. The primary individual was face up with the head to the west facing east. No grave goods for burial lot #5011 were recovered.

Burial lot #5012 was located in area H with the coordinates in the NW corner of the coffin N313'3" E62'7"". The elevation at the base of the coffin in the NW corner was 730.08 famsl. The 6 sided adult coffin (of indeterminate dimensions) contained the remains of 1 individual. The primary individual was face up with the head to the west facing east. No grave goods for burial lot #5012 were recovered.

Burial lot #5013 was located in area H with the coordinates in the NW corner of the coffin N302'6" E99'4"". The elevation at the base of the coffin in the NW corner was 729.67 famsl. The coffin (of indeterminate size and shape) contained the remains of 1 individual. The primary individual was heavily disturbed and sex, age, and position within the coffin are indeterminate. No grave goods for burial lot #5013 were recovered.

Burial lot #5014 was located in area H with the coordinates in the NW corner of the coffin N342'7" E68'8"". The elevation at the base of the coffin in the NW corner was 729.30 famsl. The 6 sided adult coffin (72" x 19") contained the remains of 1 individual. The primary individual was face up with the head to the west facing east. The following grave goods for burial lot #5014 were recovered: a crucifix.

Burial lot #5015 was located in area H with the coordinates in the NW corner of the coffin N338'10" E68'3"". The elevation at the base of the coffin in the NW corner was 729.62 famsl. The 6 sided adult coffin (75" x 19") contained the remains of 1 individual. The primary individual was face up with the head to the west facing east. The following grave goods for burial lot #5015 were recovered: a safety pin and cloth.

Burial lot #5016 was located in area H with the coordinates in the NW corner of the coffin N335'0" E67'5"". The elevation at the base of the coffin in the NW corner was 729.69 famsl. The 6 sided adult coffin (73" x 18") contained the remains of 1 individual. The primary individual was face up with the head to the west facing east. No grave goods for burial lot #5016 were recovered.

Burial lot #5017 was located in area H with the coordinates in the NW corner of the coffin N331'8" E67'1"". The elevation at the base of the coffin in the NW corner was 729.67 famsl. The 6 sided adult coffin (74" x 18") contained the remains of 1 individual. The primary individual was face up with the head to the west facing east. No grave goods for burial lot #5017 were recovered.

Burial lot #5018 was located in area H with the coordinates in the NW corner of the coffin N327'5" E66'11". The elevation at the base of the coffin in the NW corner was 729.50 famsl. The 6 sided adult coffin (72" x 18") contained the remains of 1 individual. The primary individual was face up with the head to the west facing east. No grave goods for burial lot #5018 were recovered.

Burial lot #5019 was located in area H with the coordinates in the NW corner of the coffin N319'4" E65'9". The elevation at the base of the coffin in the NW corner was 729.88 famsl. The 6 sided adult coffin (73" x 11") contained the remains of 1 individual. The primary individual was face up with the head to the west facing east. No grave goods for burial lot #5019 were recovered.

Burial lot #5020 was located in area H with the coordinates in the NW corner of the coffin N316'0" E65'10". The elevation at the base of the coffin in the NW corner was 729.34 famsl. The 6 sided adult coffin (79" x 25") contained the remains of 1 individual. The primary individual was face up with the head to the west facing east. No grave goods for burial lot #5020 were recovered.

Burial lot #5021 was located in area H with the coordinates in the NW corner of the coffin N303'9" E66'6". The elevation at the base of the coffin in the NW corner was 729.89 famsl. The 6 sided adult coffin (72" x 19") contained the remains of 1 individual. The primary individual was face up with the head to the west facing east. Additional elements found in the pit fill were given lot #5086. No grave goods for burial lot #5021 or #5086 were recovered.

Burial lot #5022 was located in area H with the coordinates in the NW corner of the coffin N289'0" E71'7". The elevation at the base of the coffin in the NW corner was 730.45 famsl. The 6 sided adult coffin (of indeterminate dimensions) contained the remains of 1 individual. The primary individual was face up with the head to the west facing east. No grave goods for burial lot #5022 were recovered.

Burial lot #5023 was located in area H with the coordinates in the NW corner of the coffin N285'10" E67'10". The elevation at the base of the coffin in the NW corner was 730.02 famsl. The 6 sided adult coffin (72" x 21") contained the remains of 1 individual. The primary individual was face up with the head to the west facing east. No grave goods for burial lot #5023 were recovered.

Burial lot #5024 was located in area H with the coordinates in the NW corner of the coffin N282'9" E78'8". The elevation at the base of the coffin in the NW corner was 729.30 famsl. The 6 sided adult coffin (72" x 18") contained the remains of 1 individual. The primary individual was face up with the head to the west facing east. No grave goods for burial lot #5024 were recovered.

Burial lot #5025 was located in area H with the coordinates in the NW corner of the coffin N281'3" E85'7". The elevation at the base of the coffin in the NW corner was 729.89 famsl. The 6 sided adult coffin (72" x 17") contained the remains of 1 individual. The primary individual was face up with the head to the west facing east. No grave goods for burial lot #5025 were recovered.

Burial lot #5026 was located in area H with the coordinates in the NW corner of the coffin N303'4" E74'7". The elevation at the base of the coffin in the NW corner was 729.41 famsl. The 6 sided adult coffin (73" x 20") contained the remains of 1 individual. The primary individual was face up with the head to the west facing east. No grave goods for burial lot #5026 were recovered.

Burial lot #5027 was located in area H with the coordinates in the NW corner of the coffin N306'6" E74'0". The elevation at the base of the coffin in the NW corner was 729.32 famsl. The 6 sided adult coffin (76" x 19") contained the remains of 1 individual. The primary individual was face up with the head to the west facing east. No grave goods for burial lot #5027 were recovered.

Burial lot #5028 was located in area H with the coordinates in the NW corner of the coffin N311'2" E74'11". The elevation at the base of the coffin in the NW corner was 729.35 famsl. The 6 sided adult coffin (66" x 14") contained the remains of 1 individual. The primary individual was face up with the head to the west facing east. No grave goods for burial lot #5028 were recovered.

Burial lot #5029 was located in area H with the coordinates in the NW corner of the coffin N315'5" E74'4". The elevation at the base of the coffin in the NW corner was 729.24 famsl. The 6 sided adult coffin (75" x 21") contained the remains of 1 individual. The primary individual was face up with the head to the west facing east. No grave goods for burial lot #5029 were recovered.

Burial lot #5030 was located in area H with the coordinates in the NW corner of the coffin N319'3" E79'0". The elevation at the base of the coffin in the NW corner was 729.33 famsl. The adult coffin (of indeterminate size and shape) contained the remains of 1 individual. Due to disturbance, the primary individual was in an indeterminate position within the coffin. No grave goods for burial lot #5030 were recovered.

Burial lot #5031 was located in area H with the coordinates in the NW corner of the coffin N323'0" E74'11". The elevation at the base of the coffin in the NW corner was 729.30 famsl. The 6 sided adult coffin (73" x 19") contained the remains of 1 individual. The primary individual was face up with the head to the west facing east. The following grave goods for burial lot #5031 were recovered: two gold rings.

Burial lot #5032 was located in area H with the coordinates in the NW corner of the coffin N327'0" E74'10". The elevation at the base of the coffin in the NW corner was 728.83 famsl. The 6 sided adult coffin (76" x 19") contained the remains of 1 individual. The primary individual was face up with the head to the west facing east. No grave goods for burial lot #5032 were recovered.

Burial lot #5033 was located in area H with the coordinates in the NW corner of the coffin N330'9" E74'9". The elevation at the base of the coffin in the NW corner was 729.71 famsl. The 6 sided adult coffin (78" x 17") contained the remains of 1 individual. The primary individual was face up with the head to the west facing east. A secondary burial within the coffin of lot #5033 was found and given burial lot #5183. No grave goods for burial lot #5033 were recovered. Grave goods found in association with lot #5183 are: leather boots with laces.

Burial lot #5034 was located in area H with the coordinates in the NW corner of the coffin N334'8" E75'4". The elevation at the base of the coffin in the NW corner was 729.03 famsl. The 6 sided adult coffin (74" x 21") contained the remains of 1 individual. The primary individual was face up with the head to the west facing east. The following grave goods for burial lot #5034 were recovered: buttons.

Burial lot #5035 was located in area H with the coordinates in the NW corner of the coffin N338'8" E76'6". The elevation at the base of the coffin in the NW corner was 728.76 famsl. The 6 sided adult coffin (74" x 20") contained the remains of 1 individual. The primary individual was face up with the head to the west facing east. No grave goods for burial lot #5035 were recovered.

Burial lot #5036 was located in area H with the coordinates in the NW corner of the coffin N342'6" E76'11". The elevation at the base of the coffin in the NW corner was 729.07 famsl. The 6 sided adult coffin (75" x 18") contained the remains of 1 individual. The primary individual was face up with the head to the west facing east. No grave goods for burial lot #5036 were recovered.

Burial lot #5037 was located in area H with the coordinates in the NW corner of the coffin N348'7" E80'4". The elevation at the base of the coffin in the NW corner was 729.14 famsl. The 6 sided adult coffin (71" x 17") contained the remains of 1 individual. The primary individual was face up with the head to the west facing east. The following grave goods for burial lot #5037 were recovered: buttons.

Burial lot #5038 was located in area H with the coordinates in the NW corner of the coffin N345'8" E85'9". The elevation at the base of the coffin in the NW corner was 728.43 famsl. The 6 sided adult coffin (72" x 18") contained the remains of 1 individual. The primary individual was face up with the head to the west facing east. Additional elements were given lot #5085. The following grave goods for burial lot #5038 were recovered: a safety pin and buttons.

Burial lot #5039 was located in area H with the coordinates in the NW corner of the coffin N342'3" E85'1". The elevation at the base of the coffin in the NW corner was 729.06 famsl. The 6 sided adult coffin (76" x 18") contained the remains of 1 individual. The primary individual was face up with the head to the west facing east. The following grave goods for burial lot #5039 were recovered: two safety pins.

Burial lot #5040 was located in area H with the coordinates in the NW corner of the coffin N337'10" E84'10". The elevation at the base of the coffin in the NW corner was 729.28 famsl. The 6 sided adult coffin (75" x 22") contained the remains of 1 individual. The primary individual was face up with the head to the west facing east. The following grave goods for burial lot #5040 were recovered: a bottle neck.

Burial lot #5041 was located in area H with the coordinates in the NW corner of the coffin N334'5" E83'10". The elevation at the base of the coffin in the NW corner was 728.83 famsl. The 6 sided adult coffin (74" x 19") contained the remains of 1 individual. The primary individual was face up with the head to the west facing east. No grave goods for burial lot #5041 were recovered.

Burial lot #5042 was located in area H with the coordinates in the NW corner of the coffin N330'7" E83'8". The elevation at the base of the coffin in the NW corner was 729.09 famsl. The 6 sided adult coffin (71" x 18") contained the remains of 1 individual. The primary individual was face up with the head to the west facing east. No grave goods for burial lot #5042 were recovered.

Burial lot #5043 was located in area H with the coordinates in the NW corner of the coffin N326'9" E83'4". The elevation at the base of the coffin in the NW corner was 730.09 famsl. The 6 sided adult coffin (74" x 19") contained the remains of 1 individual. The primary individual was face up with the head to the west facing east. No grave goods for burial lot #5043 were recovered.

Burial lot #5044 was located in area H with the coordinates in the NW corner of the coffin N322'9" E83'4". The elevation at the base of the coffin in the NW corner was 729.14 famsl. The 6 sided adult coffin (71" x 18") contained the remains of 1 individual. The primary individual was face up with the head to the west facing east. No grave goods for burial lot #5044 were recovered.

Burial lot #5045 was located in area H with the coordinates in the NW corner of the coffin N318'9" E83'0". The elevation at the base of the coffin in the NW corner was 728.65 famsl. The 6 sided adult coffin (72" x 19") contained the remains of 1 individual. The primary individual was face up with the head to the west facing east. No grave goods for burial lot #5045 were recovered.

Burial lot #5046 was located in area H with the coordinates in the NW corner of the coffin N314'8" E86'6". The elevation at the base of the coffin in the NW corner was 728.38 famsl. The adult coffin (of indeterminate size and shape due to trench disturbance) contained the remains of 1 individual. The primary individual was placed with the head to the west facing east. No grave goods for burial lot #5046 were recovered.

Burial lot #5047 was located in area H with the coordinates in the NW corner of the coffin N310'5" E83'1". The elevation at the base of the coffin in the NW corner was 728.98 famsl. The 6 sided adult coffin (63" x 16") contained the remains of 1 individual. The primary individual was face up with the head to the west facing east. No grave goods for burial lot #5047 were recovered.

Burial lot #5048 was located in area H with the coordinates in the NW corner of the coffin N307'4" E78'5". The elevation at the base of the coffin in the NW corner was 728.98 famsl. The 4 sided adult coffin (84" x 34") contained the remains of 1 individual. The primary individual was face up with the head to the west facing east. The following grave goods for burial lot #5048 were recovered: a gold ring and cloth.

Burial lot #5049 was located in area H with the coordinates in the NW corner of the coffin N302'11" E77'5". The elevation at the base of the coffin in the NW corner was 728.83 famsl. The 6 sided adult coffin (72" x 20") contained the remains of 1 individual. The primary individual was face up with the head to the west facing east. No grave goods for burial lot #5049 were recovered.

Burial lot #5050 was located in area H with the coordinates in the NW corner of the coffin N328'9" E82'4". The elevation at the base of the coffin in the NW corner was 729.04 famsl. The 6 sided adult coffin (72" x indeterminate width due to disturbance) contained the remains of 1 individual. The primary individual was face up with the head to the west facing east. No grave goods for burial lot #5050 were recovered.

Burial lot #5051 was located in area H with the coordinates in the NW corner of the coffin N280'7" E88'0". The elevation at the base of the coffin in the NW corner was 729.37 famsl. The 6 sided adult coffin (72" x 19") contained the remains of 1 individual. The primary individual was face up with the head to the west facing east. No grave goods for burial lot #5051 were recovered.

Burial lot #5052 was located in area H with the coordinates in the NW corner of the coffin N284'10" E88'6". The elevation at the base of the coffin in the NW corner was 728.84 famsl. The 6 sided adult coffin (74" x 20") contained the remains of 1 individual. The primary individual was face up with the head to the west facing east. Secondary skeletal elements within the pit fill were given lot #5083. No grave goods for burial lot #5052 or #5083 were recovered.

Burial lot #5053 was located in area H with the coordinates in the NW corner of the coffin N298'9" E90'9". The elevation at the base of the coffin in the NW corner was 728.57 famsl. The 6 sided adult coffin (72" x 19") contained the remains of 1 individual. The primary individual was face up with the head to the west facing east. No grave goods for burial lot #5053 were recovered.

Burial lot #5054 was located in area H with the coordinates in the NW corner of the coffin N298'6" E91'0". The elevation at the base of the coffin in the NW corner was 728.31 famsl. The 6 sided adult coffin (75" x 22") contained the remains of 1 individual. The primary individual was face up with the head to the west facing east. The following grave goods for burial lot #5054 were recovered: two safety pins.

Burial lot #5055 was located in area H with the coordinates in the NW corner of the coffin N310'7" E91'9". The elevation at the base of the coffin in the NW corner was 728.34 famsl. The 6 sided adult coffin (71" x 19") contained the remains of 1 individual. The primary individual was face up with the head to the west facing east. There were no grave goods for burial lot #5055 recovered.

Burial lot #5056 was located in area H with the coordinates in the NW corner of the coffin N314'6" E91'7". The elevation at the base of the coffin in the NW corner was 727.85 famsl. The 6 sided adult coffin (72" x 19") contained the remains of 1 individual. The primary individual was face up with the head to the west facing east. No grave goods for burial lot #5056 were recovered.

Burial lot #5057 was located in area H with the coordinates in the NW corner of the coffin N317'11" E87'7". The elevation at the base of the coffin in the NW corner was 738.36 famsl. The 6 sided adult coffin (70" x 18") contained the remains of 1 individual. The primary individual was face up with the head to the west facing east. No grave goods for burial lot #5057 were recovered.

Burial lot #5058 was located in area H with the coordinates in the NW corner of the coffin N322'8" E91'11". The elevation at the base of the coffin in the NW corner was 728.46 famsl. The 6 sided adult coffin (72" x 19") contained the remains of 1 individual. The primary individual was face up with the head to the west facing east. The following grave goods for burial lot #5058 were recovered: two safety pins.

Burial lot #5059 was located in area H with the coordinates in the NW corner of the coffin N326'2" E92'2". The elevation at the base of the coffin in the NW corner was 727.92 famsl. The 6 sided adult coffin (74" x 19") contained the remains of 1 individual. The primary individual was face up with the head to the west facing east. No grave goods for burial lot #5059 were recovered.

Burial lot #5060 was located in area H with the coordinates in the NW corner of the coffin N330'2" E92'2". The elevation at the base of the coffin in the NW corner was 728.35 famsl. The 6 sided adult coffin (72" x 17") contained the remains of 1 individual. The primary individual was face up with the head to the west facing east. No grave goods for burial lot #5060 were recovered.

Burial lot #5061 was located in area H with the coordinates in the NW corner of the coffin N334'0" E92'5". The elevation at the base of the coffin in the NW corner was 728.50 famsl. The 6 sided adult coffin (77" x 17") contained the remains of 1 individual. The primary individual was face up with the head to the west facing east. No grave goods for burial lot #5061 were recovered.

Burial lot #5062 was located in area H with the coordinates in the NW corner of the coffin N338'1" E92'9". The elevation at the base of the coffin in the NW corner was 728.59 famsl. The 6 sided adult coffin (79" x 19") contained the remains of 1 individual. The primary individual was face up with the head to the west facing east. Secondary skeletal elements from within the pit fill were given lot # 5084. No grave goods for burial lot #5062 or #5084 were recovered.

Burial lot #5063 was located in area H with the coordinates in the NW corner of the coffin N342'0" E93'0". The elevation at the base of the coffin in the NW corner was 728.91 famsl. The 6 sided adult coffin (79" x 21") contained the remains of 1 individual. The primary individual was face up with the head to the west facing east. No grave goods for burial lot #5063 were recovered.

Burial lot #5064 was located in area H with the coordinates in the NW corner of the coffin N345'10" E93'9". The elevation at the base of the coffin in the NW corner was 728.08 famsl. The 6 sided adult coffin (72" x 18") contained the remains of 1 individual. The primary individual was face up with the head to the west facing east. The following grave goods for burial lot #5064 were recovered: safety pins.

Burial lot #5065 was located in area H with the coordinates in the NW corner of the coffin N345'5" E102'0". The elevation at the base of the coffin in the NW corner was 728.28 famsl. The 6 sided adult coffin (72" x 20") contained the remains of 1 individual. The primary individual was face up with the head to the west facing east. No grave goods for burial lot #5065 were recovered.

Burial lot #5066 was located in area H with the coordinates in the NW corner of the coffin N341'3" E101'6". The elevation at the base of the coffin in the NW corner was 728.37 famsl. The 6 sided adult coffin (73" x 19") contained the remains of 1 individual. The primary individual was face up with the head to the west facing east. No grave goods for burial lot #5066 were recovered.

Burial lot #5067 was located in area H with the coordinates in the NW corner of the coffin N337'7" E101'1". The elevation at the base of the coffin in the NW corner was 728.09 famsl. The 6 sided adult coffin (74" x 18") contained the remains of 1 individual. The primary individual was face up with the head to the west facing east. No grave goods for burial lot #5067 were recovered.

Burial lot #5068 was located in area H with the coordinates in the NW corner of the coffin N333'6" E101'0". The elevation at the base of the coffin in the NW corner was 727.56 famsl. The 6 sided adult coffin (72" x 18") contained the remains of 1 individual. The primary individual was face up with the head to the west facing east. No grave goods for burial lot #5068 were recovered.

Burial lot #5069 was located in area H with the coordinates in the NW corner of the coffin N329'8" E101'0". The elevation at the base of the coffin in the NW corner was 728.32 famsl. The 6 sided adult coffin (70" x 20") contained the remains of 1 individual. The primary individual was face up with the head to the west facing east. The following grave goods for burial lot #5069 were recovered: safety pins.

Burial lot #5070 was located in area H with the coordinates in the NW corner of the coffin N319'0" E106'0". The elevation at the base of the coffin in the NW corner was 727.95 famsl. The 6 sided adult coffin (71" x 22") contained the remains of 1 individual. The primary individual was face up with the head to the west facing east. No grave goods for burial lot #5070 were recovered.

Burial lot #5071 was located in area H with the coordinates in the NW corner of the coffin N322'7" E100'1". The elevation at the base of the coffin in the NW corner was 727.66 famsl. The 6 sided adult coffin (72" x 18") contained the remains of 1 individual. The primary individual was face up with the head to the west facing east. The following grave goods for burial lot #5071 were recovered: an enamel bowl.

Burial lot #5072 was located in area H with the coordinates in the NW corner of the coffin N318'3" E100'2". The elevation at the base of the coffin in the NW corner was 727.87 famsl. The 6 sided adult coffin (71" x 18") contained the remains of 1 individual. The primary individual was face up with the head to the west facing east. No grave goods for burial lot #5072 were recovered.

Burial lot #5073 was located in area H with the coordinates in the NW corner of the coffin N314'2" E99'9". The elevation at the base of the coffin in the NW corner was 727.96 famsl. The 6 sided adult coffin (72" x 20") contained the remains of 1 individual. The primary individual was face up with the head to the west facing east. The following grave goods for burial lot #5073 were recovered: safety pins.

Burial lot #5074 was located in area H with the coordinates in the NW corner of the coffin N310'4" E100'1". The elevation at the base of the coffin in the NW corner was 727.99 famsl. The 6 sided adult coffin (71" x 20") contained the remains of 1 individual. The primary individual was face up with the head to the west facing east. The following grave goods for burial lot #5074 were recovered: buttons.

Burial lot #5075 was located in area H with the coordinates in the NW corner of the coffin N306'9" E99'9". The elevation at the base of the coffin in the NW corner was 727.7 famsl. The 6 sided adult coffin (72" x 19") contained the remains of 1 individual. The primary individual was face up with the head to the west facing east. No grave goods for burial lot #5075 were recovered.

Burial lot #5076 was located in area H with the coordinates in the NW corner of the coffin N297'11" E99'0". The elevation at the base of the coffin in the NW corner was 727.99 famsl. The 6 sided adult coffin (73" x 17") contained the remains of 1 individual. The primary individual was face up with the head to the west facing east. No grave goods for burial lot #5076 were recovered.

Burial lot #5077 was located in area H with the coordinates in the NW corner of the coffin N286'11" E96'2". The elevation at the base of the coffin in the NW corner was 728.32 famsl. The 6 sided adult coffin (74" x 17") contained the remains of 1 individual. The primary individual was face up with the head to the west facing east. Secondary skeletal elements were found in the pit fill of lot #5077 and were given lot #5081. No grave goods for burial lot #5077 or #5081 were recovered.

Burial lot #5078 was located in area H with the coordinates in the NW corner of the coffin N282'1" E96'0". The elevation at the base of the coffin in the NW corner was 728.62 famsl. The 6 sided adult coffin (70" x 18") contained the remains of 1 individual. The primary individual was face up with the head to the west facing east. Secondary skeletal elements were found in the pit fill of #5078, and were given lot #5080. No grave goods for burial lot #5078 or #5080 were recovered.

Burial lot #5079 was located in area H with the coordinates in the NW corner of the coffin N311'3" E66'0". The elevation at the base of the coffin in the NW corner was 729.85 famsl. The 6 sided adult coffin (70" x 17") contained the remains of 1 individual. The primary individual was face up with the head to the west facing east. No grave goods for burial lot #5079 were recovered.

Burial lot #5087 was located in area H with the coordinates in the NW corner of the coffin N347'3" E60'4". The elevation at the base of the coffin in the NW corner was 729.68 famsl. The 6 sided adult coffin (74" x 18") contained the remains of 1 individual. The primary individual was face up with the head to the west facing east. The following grave goods for burial lot #5087 were recovered: a leather coin purse and eight coins.

Burial lot #5088 was located in area H with the coordinates in the NW corner of the coffin N350'10" E60'8". The elevation at the base of the coffin in the NW corner was 730.46 famsl. The 6 sided adult coffin (74" x 18") contained the remains of 1 individual. The primary individual was face up with the head to the west facing east. No grave goods for burial lot #5088 were recovered.

Burial lot #5089 was located in area H with the coordinates in the NW corner of the coffin N354'8" E61'4". The elevation at the base of the coffin in the NW corner was 730.08 famsl. The 6 sided adult coffin (75" x 19") contained the remains of 1 individual. The primary individual was face up with the head to the west facing east. No grave goods for burial lot #5089 were recovered.

Burial lot #5090 was located in area H with the coordinates in the NW corner of the coffin N368'6" E68'11". The elevation at the base of the coffin in the NW corner was 730.21 famsl. The 6 sided adult coffin (78" x 20") contained the remains of 1 individual. The primary individual was face up with the head to the west facing east. No grave goods for burial lot #5090 were recovered.

Burial lot #5091 was located in area H with the coordinates in the NW corner of the coffin N362'0" E59'10". The elevation at the base of the coffin in the NW corner was 730.21 famsl. The 6 sided adult coffin (76" x 22") contained the remains of 1 individual. The primary individual was face up with the head to the west facing east. No grave goods for burial lot #5091 were recovered.

Burial lot #5092 was located in area H with the coordinates in the NW corner of the coffin N365'2" E62'5". The elevation at the base of the coffin in the NW corner was 730.16 famsl. The 6 sided adult coffin (78" x 22") contained the remains of 1 individual. The primary individual was face up with the head to the west facing east. Secondary elements were found within the coffin and given lot #5184. No grave goods for burial lot #5092 or #5184 were recovered.

Burial lot #5093 was located in area H with the coordinates in the NW corner of the coffin N350'5" E69'4". The elevation at the base of the coffin in the NW corner was 730.08 famsl. The 6 sided adult coffin (69" x 17") contained the remains of 1 individual. The primary individual was face up with the head to the west facing east. No grave goods for burial lot #5093 were recovered.

Burial lot #5094 was located in area H with the coordinates in the NW corner of the coffin N354'5" E69'6". The elevation at the base of the coffin in the NW corner was 729.67 famsl. The 6 sided adult coffin (74" x 19") contained the remains of 1 individual. The primary individual was face up with the head to the west facing east. The following grave goods for burial lot #5094 were recovered: glass fragments.

Burial lot #5095 was located in area H with the coordinates in the NW corner of the coffin N359'1" E54'6". The elevation at the base of the coffin in the NW corner was 730.74 famsl. The 6 sided adult coffin (60" x 20") contained the remains of 1 individual. The primary individual was face up with the head to the west facing east. No grave goods for burial lot #5095 were recovered.

Burial lot #5096 was located in area H with the coordinates in the NW corner of the coffin N362'0" E55'6". The elevation at the base of the coffin in the NW corner was 730.74 famsl. The 6 sided adult coffin (66" x 20") contained the remains of 1 individual. The primary individual was face up with the head to the west facing east. The following grave goods for burial lot #5096 were recovered: a gold bridge.

Burial lot #5097 was located in area H with the coordinates in the NW corner of the coffin N365'8" E54'2". The elevation at the base of the coffin in the NW corner was 730.62 famsl. The 6 sided adult coffin (79" x 124") contained the remains of 1 individual. The primary individual was face up with the head to the west facing east. No grave goods for burial lot #5097 were recovered.

Burial lot #5098 was located in area H with the coordinates in the NW corner of the coffin N358'1" E69'5". The elevation at the base of the coffin in the NW corner was 729.78 famsl. The 6 sided adult coffin (76" x 19") contained the remains of 1 individual. The primary individual was face up with the head to the west facing east. The following grave goods for burial lot #5098 were recovered: a safety pin.

Burial lot #5099 was located in area H with the coordinates in the NW corner of the coffin N361'10" E69'11". The elevation at the base of the coffin in the NW corner was 729.68 famsl. The 6 sided adult coffin (82" x 23") contained the remains of 1 individual. The primary individual was face up with the head to the west facing east. No grave goods for burial lot #5099 were recovered.

Burial lot #5100 was located in area H with the coordinates in the NW corner of the coffin N365'5" E71'0". The elevation at the base of the coffin in the NW corner was 729.89 famsl. The 6 sided adult coffin (74" x 16") contained the remains of 1 individual. The primary individual was face up with the head to the west facing east. No grave goods for burial lot #5100 were recovered.

Burial lot #5101 was located in area H with the coordinates in the NW corner of the coffin N364'6" E78'10". The elevation at the base of the coffin in the NW corner was 730.09 famsl. The 6 sided adult coffin (77" x 17") contained the remains of 1 individual. The primary individual was face up with the head to the west facing east. No grave goods for burial lot #5101 were recovered.

Burial lot #5102 was located in area H with the coordinates in the NW corner of the coffin N361'5" E77'10". The elevation at the base of the coffin in the NW corner was 729.51 famsl. The 6 sided adult coffin (79" x 20") contained the remains of 1 individual. The primary individual was face up with the head to the west facing east. No grave goods for burial lot #5102 were recovered.

Burial lot #5103 was located in area H with the coordinates in the NW corner of the coffin N357'7" E77'6". The elevation at the base of the coffin in the NW corner was 729.26 famsl. The 6 sided adult coffin (75" x 23") contained the remains of 1 individual. The primary individual was face up with the head to the west facing east. No grave goods for burial lot #5103 were recovered.

Burial lot #5104 was located in area H with the coordinates in the NW corner of the coffin N353'10" E77'2". The elevation at the base of the coffin in the NW corner was 729.24 famsl. The 6 sided adult coffin (74" x 19") contained the remains of 1 individual. The primary individual was face up with the head to the west facing east. The following grave goods for burial lot #5104 were recovered: safety pins.

Burial lot #5105 was located in area H with the coordinates in the NW corner of the coffin N352'8" E79'1". The elevation at the base of the coffin in the NW corner was 729.14 famsl. The 6 sided adult coffin (75" x 19") contained the remains of 1 individual. The primary individual was face up with the head to the west facing east. No grave goods for burial lot #5105 were recovered.

Burial lot #5106 was located in area H with the coordinates in the NW corner of the coffin N349'6" E85'5". The elevation at the base of the coffin in the NW corner was 728.91 famsl. The 6 sided adult coffin (72" x 18") contained the remains of 1 individual. The primary individual was face up with the head to the west facing east. No grave goods for burial lot #5106 were recovered.

Burial lot #5107 was located in area H with the coordinates in the NW corner of the coffin N353'4" E85'6". The elevation at the base of the coffin in the NW corner was 728.63 famsl. The 6 sided adult coffin (80" x 19") contained the remains of 1 individual. The primary individual was face up with the head to the west facing east. The following grave goods for burial lot #5017 were recovered: safety pins, a button, and a ring.

Burial lot #5108 was located in area H with the coordinates in the NW corner of the coffin N357'0" E86'0". The elevation at the base of the coffin in the NW corner was 729.01 famsl. The 6 sided adult coffin (72" x 19") contained the remains of 1 individual. The primary individual was face up with the head to the west facing east. No grave goods for burial lot #5108 were recovered.

Burial lot #5109 was located in area H with the coordinates in the NW corner of the coffin N360'11" E86'2". The elevation at the base of the coffin in the NW corner was 729.55 famsl. The 6 sided adult coffin (80" x 22") contained the remains of 1 individual. The primary individual was face up with the head to the west facing east. The following grave goods for burial lot #5109 were recovered: fragments of leather with copper attached.

Burial lot #5110 was located in area H with the coordinates in the NW corner of the coffin N364'3" E87'9". The elevation at the base of the coffin in the NW corner was 729.63 famsl. The 6 sided adult coffin (70" x 19") contained the remains of 1 individual. The primary individual was face up with the head to the west facing east. No grave goods for burial lot #5110 were recovered.

Burial lot #5111 was located in area H with the coordinates in the NW corner of the coffin N363'6" E96'2". The elevation at the base of the coffin in the NW corner was 728.63 famsl. The 6 sided adult coffin (72" x 21") contained the remains of 1 individual. The primary individual was face up with the head to the west facing east. No grave goods for burial lot #5111 were recovered.

Burial lot #5112 was located in area H with the coordinates in the NW corner of the coffin N360'5" E95'0". The elevation at the base of the coffin in the NW corner was 728.62 famsl. The 6 sided adult coffin (78" x 19") contained the remains of 1 individual. The primary individual was face up with the head to the west facing east. The following grave goods for burial lot #5112 were recovered: a comb, a buckle, buttons, suspender adjuster, cloth, glass fragments, and shoes.

Burial lot #5113 was located in area H with the coordinates in the NW corner of the coffin N356'7" E94'4". The elevation at the base of the coffin in the NW corner was 728.69 famsl. The 6 sided adult coffin (78" x 22") contained the remains of 1 individual. The primary individual was face up with the head to the west facing east. The following grave goods for burial lot #5113 were recovered: safety pin and a pipe stem.

Burial lot #5114 was located in area H with the coordinates in the NW corner of the coffin N352'11" E93'9". The elevation at the base of the coffin in the NW corner was 728.48 famsl. The 6 sided adult coffin (76" x 19") contained the remains of 1 individual. The primary individual was face up with the head to the west facing east. No grave goods for burial lot #5114 were recovered.

Burial lot #5115 was located in area H with the coordinates in the NW corner of the coffin N349'7" E93'6". The elevation at the base of the coffin in the NW corner was 728.85 famsl. The 6 sided adult coffin (72" x 19") contained the remains of 1 individual. The primary individual was face up with the head to the west facing east. No grave goods for burial lot #5115 were recovered.

Burial lot #5116 was located in area H with the coordinates in the NW corner of the coffin N360'0" E103'4". The elevation at the base of the coffin in the NW corner was 728.62 famsl. The 6 sided adult coffin (80" x 22") contained the remains of 1 individual. The primary individual was face up with the head to the west facing east. The following grave goods for burial lot #5116 were recovered: a burial I.D. tag.

Burial lot #5117 was located in area H with the coordinates in the NW corner of the coffin N349'2" E102'6". The elevation at the base of the coffin in the NW corner was 728.48 famsl. The 6 sided adult coffin (72" x 18") contained the remains of 1 individual. The primary individual was face up with the head to the west facing east. No grave goods for burial lot #5117 were recovered.

Burial lot #5118 was located in area H with the coordinates in the NW corner of the coffin N352'7" E102'2". The elevation at the base of the coffin in the NW corner was 728.27 famsl. The 6 sided adult coffin (77" x 16") contained the remains of 1 individual. The primary individual was face up with the head to the west facing east. No grave goods for burial lot #5118 were recovered.

Burial lot #5119 was located in area H with the coordinates in the NW corner of the coffin N356'5" E102'8". The elevation at the base of the coffin in the NW corner was 728.34 famsl. The 6 sided adult coffin (78" x 22") contained the remains of 1 individual. The primary individual was face up with the head to the west facing east. No grave goods for burial lot #5119 were recovered.

Burial lot #5120 was located in area H with the coordinates in the NW corner of the coffin N364'0" E61'0". The elevation at the base of the coffin in the NW corner was 727.94 famsl. The 6 sided adult coffin (72" x 21") contained the remains of 1 individual. The primary individual was face up with the head to the west facing east. No grave goods for burial lot #5120 were recovered.

Burial lot #5121 was located in area H with the coordinates in the NW corner of the coffin N368'5" E111'8". The elevation at the base of the coffin in the NW corner was 728.11 famsl. The 6 sided adult coffin (74" x 18") contained the remains of 1 individual. The primary individual was face up with the head to the west facing east. No grave goods for burial lot #5121 were recovered.

Burial lot #5122 was located in area H with the coordinates in the NW corner of the coffin N364'9" E111'3". The elevation at the base of the coffin in the NW corner was 728.29 famsl. The 6 sided adult coffin (87" x 18") contained the remains of 1 individual. The primary individual was face up with the head to the west facing east. No grave goods for burial lot #5122 were recovered.

Burial lot #5123 was located in area H with the coordinates in the NW corner of the coffin N361'0" E111'9". The elevation at the base of the coffin in the NW corner was 728.17 famsl. The 6 sided adult coffin (76" x 17") contained the remains of 1 individual. The primary individual was face up with the head to the west facing east. No grave goods for burial lot #5123 were recovered.

Burial lot #5124 was located in area H with the coordinates in the NW corner of the coffin N353'9" E119'10". The elevation at the base of the coffin in the NW corner was 727.80 famsl. The 6 sided adult coffin (72" x 19") contained the remains of 1 individual. The primary individual was face up with the head to the west facing east. No grave goods for burial lot #5124 were recovered.

Burial lot #5125 was located in area H with the coordinates in the NW corner of the coffin N351'7" E110'3". The elevation at the base of the coffin in the NW corner was 727.01 famsl. The 6 sided adult coffin (75" x 18") contained the remains of 1 individual. The primary individual was face up with the head to the west facing east. No grave goods for burial lot #5125 were recovered.

Burial lot #5126 was located in area H with the coordinates in the NW corner of the coffin N350'7" E125'9". The elevation at the base of the coffin in the NW corner was 727.51 famsl. The 6 sided adult coffin (71" x 18") contained the remains of 1 individual. The primary individual was face up with the head to the west facing east. No grave goods for burial lot #5126 were recovered.

Burial lot #5127 was located in area H with the coordinates in the NW corner of the coffin N354'0" E120'3". The elevation at the base of the coffin in the NW corner was 727.38 famsl. The 6 sided adult coffin (71" x 19") contained the remains of 1 individual. The primary individual was face up with the head to the west facing east. No grave goods for burial lot #5127 were recovered.

Burial lot #5128 was located in area H with the coordinates in the NW corner of the coffin N357'8" E119'11". The elevation at the base of the coffin in the NW corner was 727.90 famsl. The 6 sided adult coffin (74" x 18") contained the remains of 1 individual. The primary individual was face up with the head to the west facing east. No grave goods for burial lot #5128 were recovered.

Burial lot #5129 was located in area H with the coordinates in the NW corner of the coffin N364'9" E120'0". The elevation at the base of the coffin in the NW corner was 729.10 famsl. The 6 sided adult coffin (79" x 21") contained the remains of 1 individual. The primary individual was face up with the head to the west facing east. No grave goods for burial lot #5129 were recovered.

Burial lot #5130 was located in area H with the coordinates in the NW corner of the coffin N368'6" E120'0". The elevation at the base of the coffin in the NW corner was 728.16 famsl. The 6 sided adult coffin (76" x 19") contained the remains of 1 individual. The primary individual was face up with the head to the west facing east. No grave goods for burial lot #5130 were recovered.

Burial lot #5131 was located in area H with the coordinates in the NW corner of the coffin N365'0" E128'3". The elevation at the base of the coffin in the NW corner was 727.79 famsl. The 6 sided adult coffin (78" x 19") contained the remains of 1 individual. The primary individual was face up with the head to the west facing east. No grave goods for burial lot #5131 were recovered.

Burial lot #5132 was located in area H with the coordinates in the NW corner of the coffin N360'10" E118'4". The elevation at the base of the coffin in the NW corner was 727.45 famsl. The 6 sided adult coffin (69" x 17") contained the remains of 1 individual. The primary individual was face up with the head to the west facing east. No grave goods for burial lot #5132 were recovered.

Burial lot #5133 was located in area H with the coordinates in the NW corner of the coffin N357'6" E128'0". The elevation at the base of the coffin in the NW corner was 727.62 famsl. The 6 sided adult coffin (70" x 19") contained the remains of 1 individual. The primary individual was face up with the head to the west facing east. No grave goods for burial lot #5133 were recovered.

Burial lot #5134 was located in area H with the coordinates in the NW corner of the coffin N353'9" E127'9". The elevation at the base of the coffin in the NW corner was 727.36 famsl. The 6 sided adult coffin (73" x 18") contained the remains of 1 individual. The primary individual was face up with the head to the west facing east. No grave goods for burial lot #5134 were recovered.

Burial lot #5135 was located in area H with the coordinates in the NW corner of the coffin N349'9" E128'0". The elevation at the base of the coffin in the NW corner was 727.57 famsl. The 6 sided adult coffin (71" x 18") contained the remains of 1 individual. The primary individual was face up with the head to the west facing east. No grave goods for burial lot #5135 were recovered.

Burial lot #5136 was located in area H with the coordinates in the NW corner of the coffin N354'6" E136'5". The elevation at the base of the coffin in the NW corner was 727.23 famsl. The 6 sided adult coffin (72" x indeterminate width due to disturbance) contained the remains of 1 individual. The primary individual was face up with the head to the west facing east. The following grave goods for burial lot #5136 were recovered: safety pins.

Burial lot #5137 was located in area H with the coordinates in the NW corner of the coffin N358'0" E136'3". The elevation at the base of the coffin in the NW corner was 727.93 famsl. The 6 sided adult coffin (80" x 21") contained the remains of 1 individual. The primary individual was face up with the head to the west facing east. No grave goods for burial lot #5137 were recovered.

Burial lot #5138 was located in area H with the coordinates in the NW corner of the coffin N360'4" E135'0". The elevation at the base of the coffin in the NW corner was 727.70 famsl. The 6 sided adult coffin (78" x 22") contained the remains of 1 individual. The primary individual was face up with the head to the west facing east. No grave goods for burial lot #5138 were recovered.