

Contact Information

GRAPES Center
 2055 South Innovation Way
 Fayetteville, AR 72701
 (479)575-2163
 Fax (479)575-6967
<http://grapes.uark.edu>

Executives

Center Executive Director
 Dr. H. Alan Mantooth
mantooth@uark.edu

Center Managing Director
 T.A. Walton
tawalton@uark.edu

Center Co-Director
 Dr. Roger Dougal
dougal@cec.sc.edu

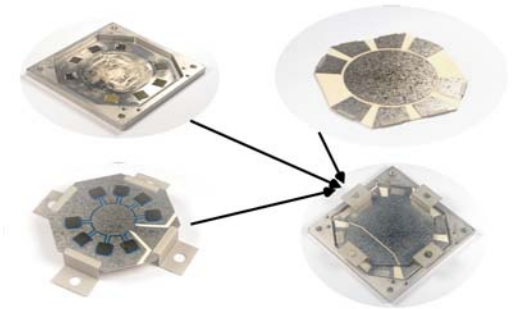


2016 GRAPES MEMBERS

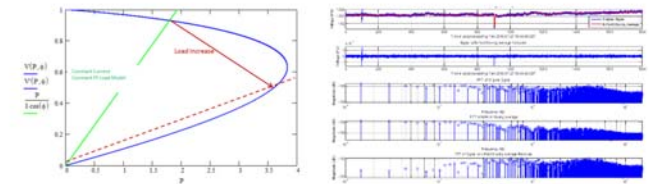
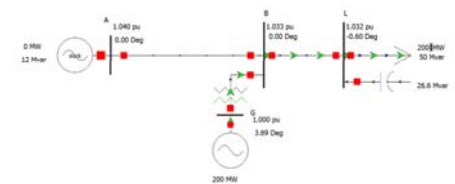


GRid-connected Advanced
 Power Electronic Systems

An NSF Industry/University
 Cooperative Research Center for
 Advanced Power Electronics



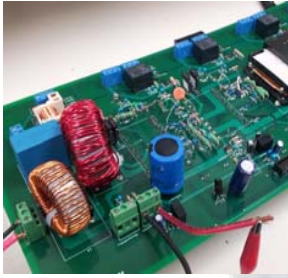
Investing in GRAPES is Investing in
 Your Future



Our Purpose

Mission

The mission of the GRAPES Center is to accelerate the adoption and insertion of power electronics into the grid in order to improve system stability, flexibility, robustness, and economy.



Facilities

GRAPES features outstanding facilities to support the activities of the center and its researchers. Both the University of Arkansas and the University of South Carolina are home to expert teams and specialized tools for ongoing research in modeling and physical systems.

GRAPES members have access to unique centers at both universities. The University of Arkansas is home to a 6 MVA test facility, the National Center for Reliable Power Transmission (NCREPT) and the High Density Electronics Center (HiDEC), while the University of South Carolina houses the Power Routing Laboratory, a 1 MVA network of power converters.

Member Benefits

Being a member of GRAPES comes with a number of benefits, including non-exclusive rights to the entire GRAPES research portfolio, including reports, papers, theses, dissertations and all protected IP generated by the center.

Members are also able to realize a significant amount of leverage on the research dollars they invest in the center, on the order of 17:1. As an added bonus, since the NSF oversees the center, members are guaranteed that their money is being used both wisely and resourcefully.

Member benefits also include:

- ◆ Access to cutting edge research
- ◆ Access to graduate students
- ◆ Access to university faculty
- ◆ Direct input into university research
- ◆ Ability to leverage research investments
- ◆ Collaboration with other IAB members
- ◆ Networking opportunities
- ◆ Technology Transfer

Industrial Partners

Our Industrial Advisory Board directs the research conducted by GRAPES. During the course of the year, members provide input through the strategic planning process, and directly through the professors to remain highly involved in the research that is important to their companies.

Membership

GRAPES currently has 16 active industrial members and is continuing to grow. The cost of joining GRAPES is \$40,000 annually and members serve on our Industrial Advisory Board which meets in person twice a year to advise and vote on project funding.



GRAPES IAB, Faculty, Staff and Students Spring Meeting, 2015